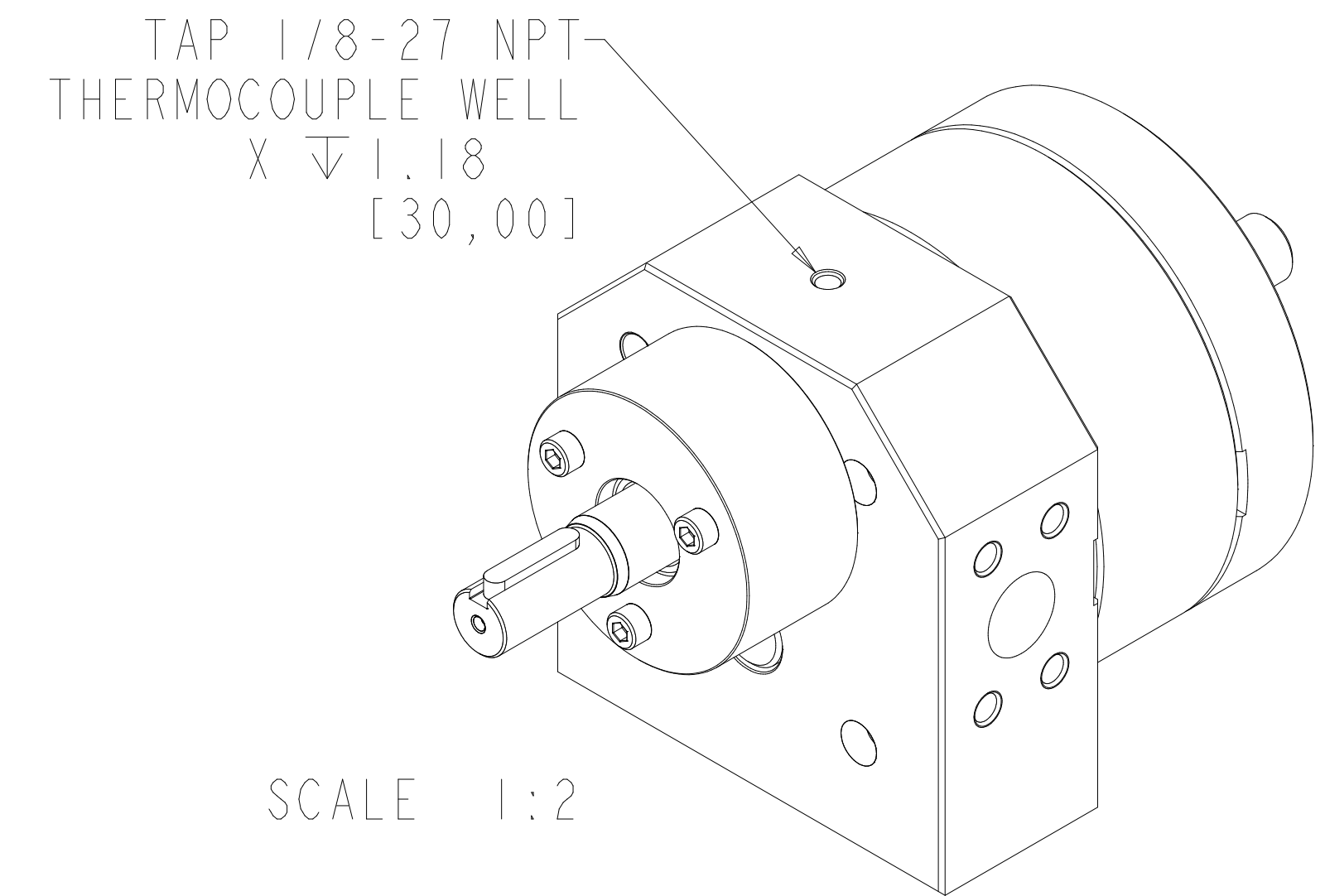
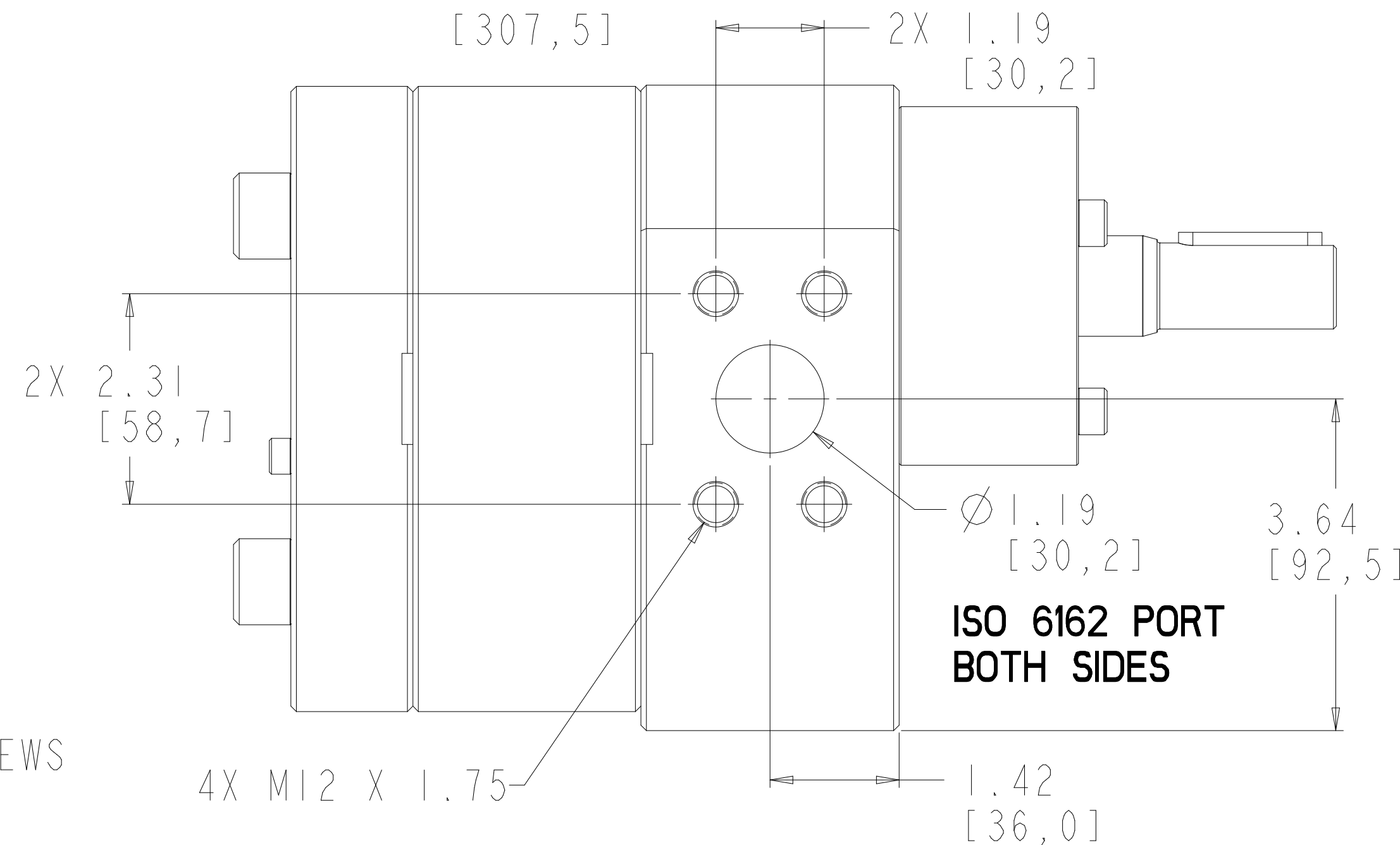
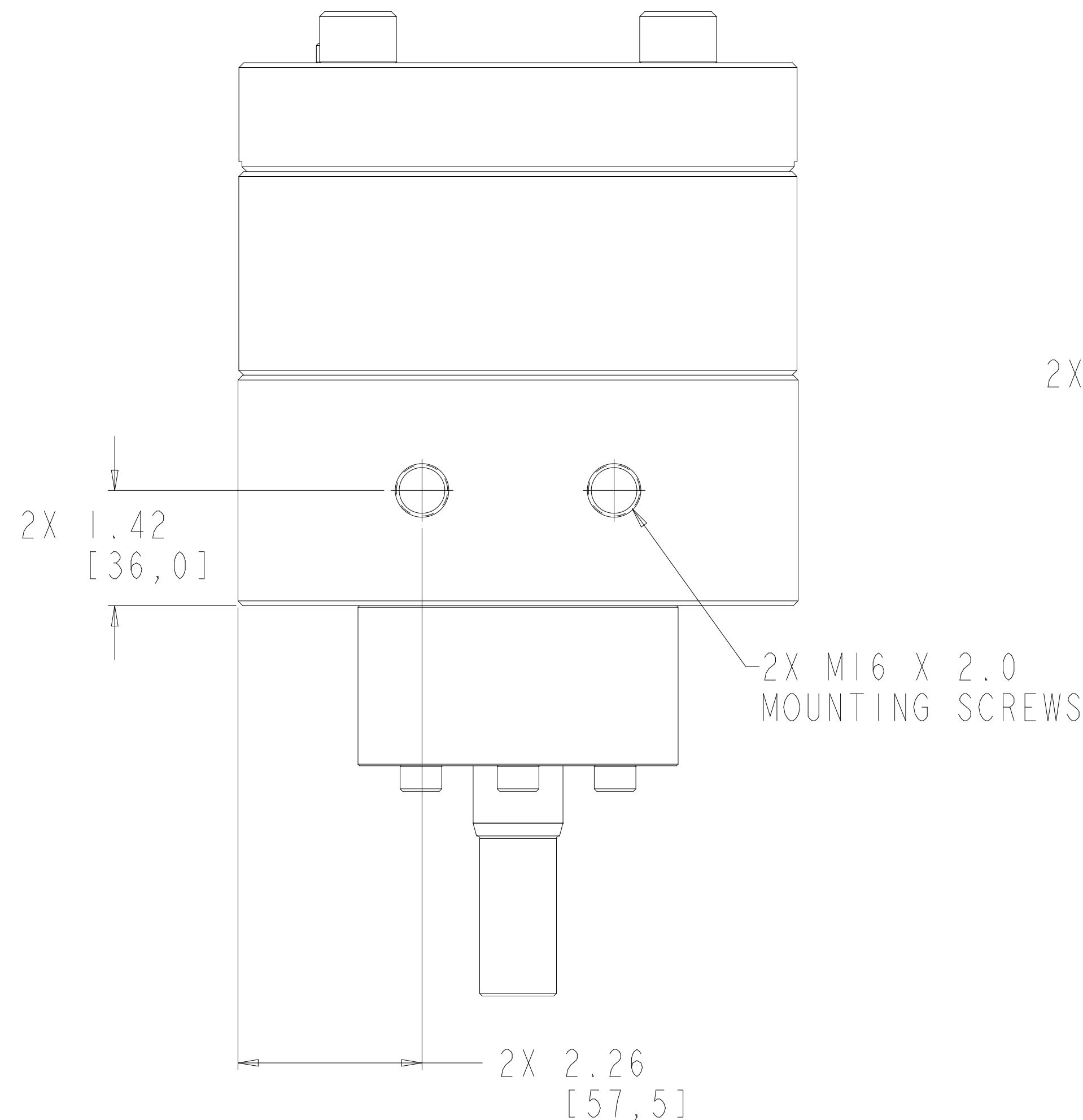
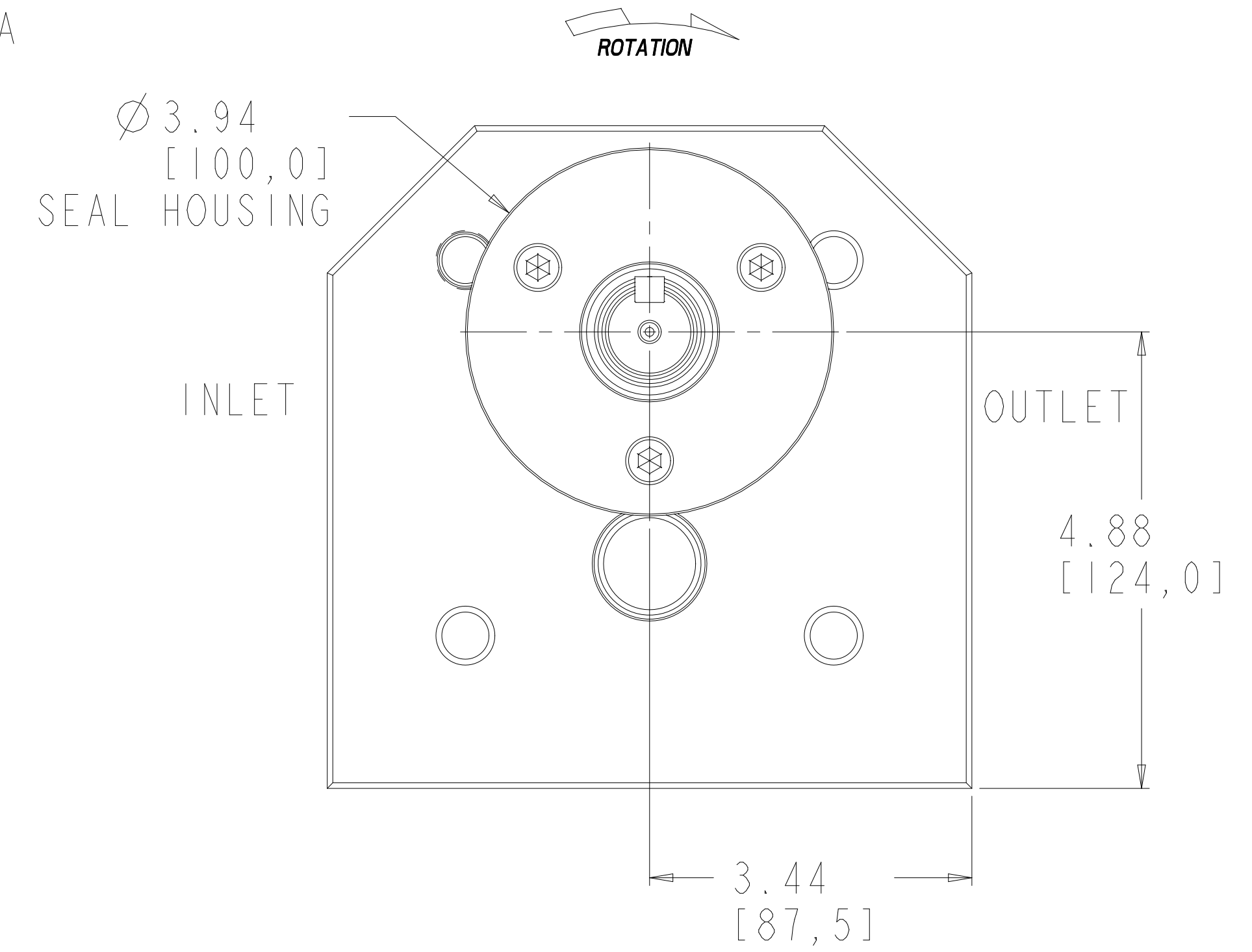
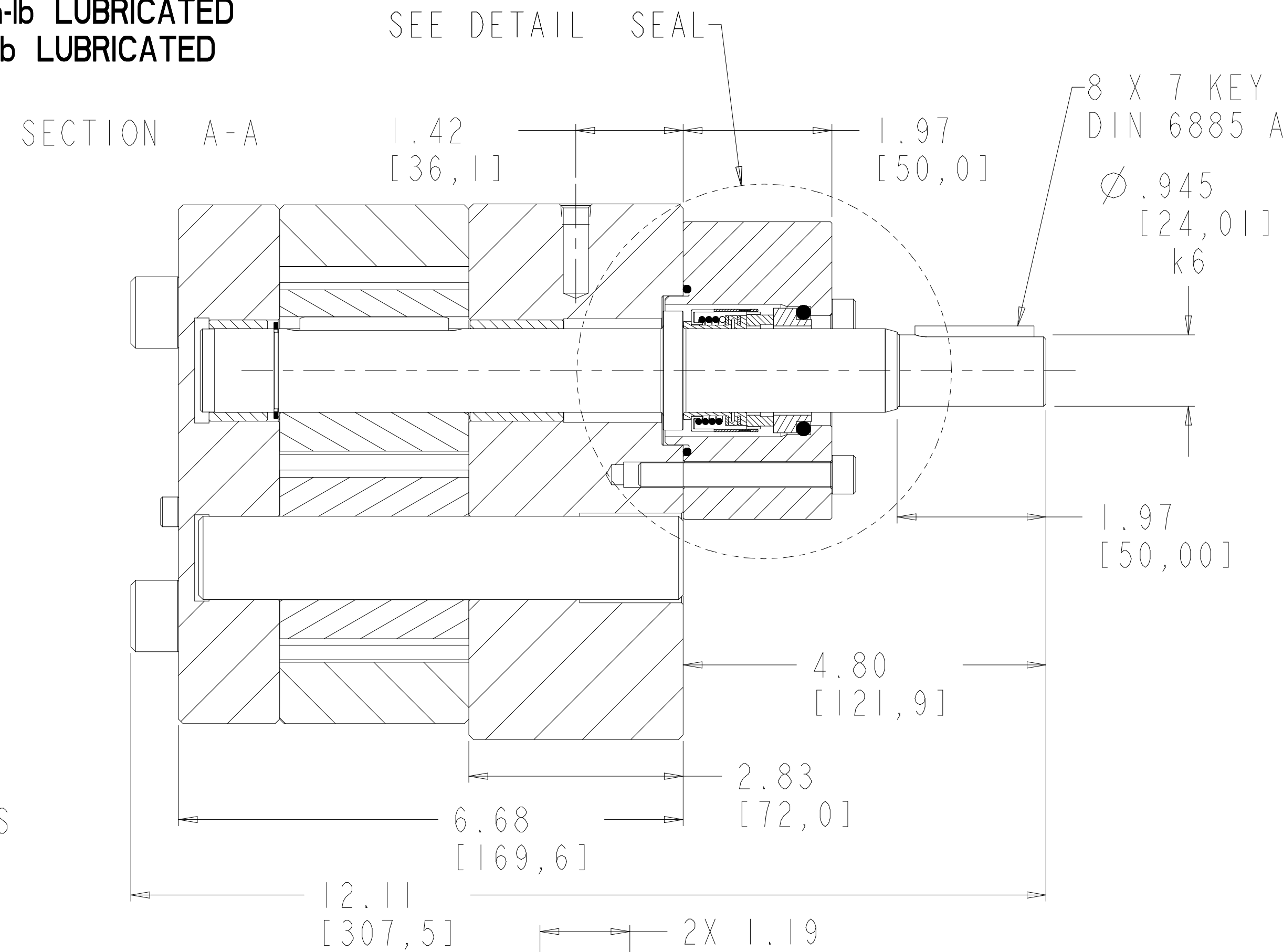
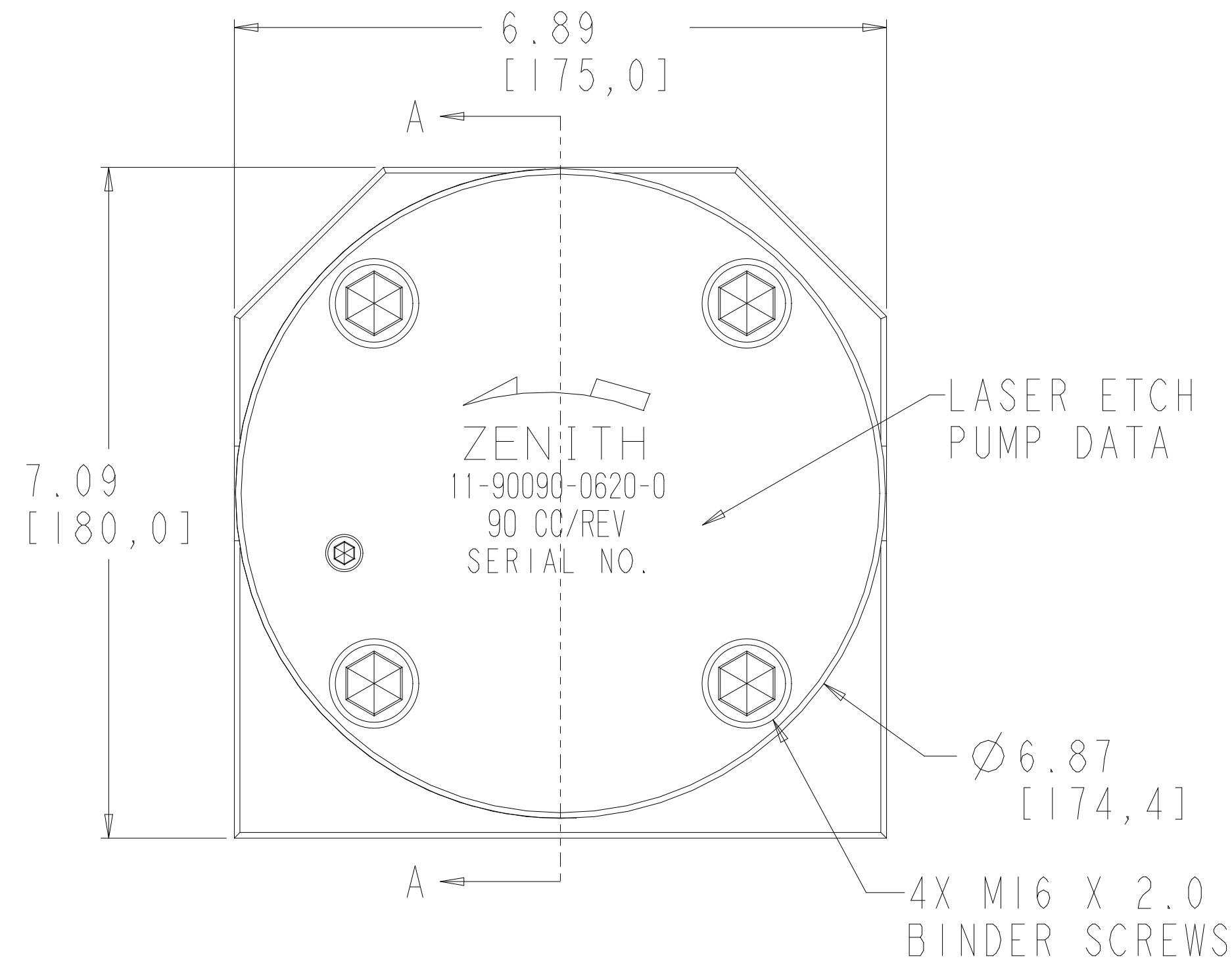


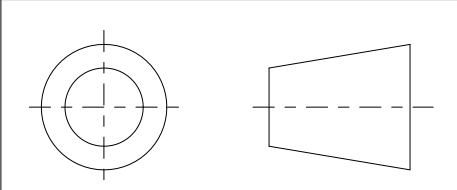
**NOTES:**

- 1) TIGHTEN M8 SCREWS TO: 350in-lb NON-LUBRICATED; 232in-lb LUBRICATED
- 2) TIGHTEN M16 SCREWS TO: 2900in-lb NON-LUBRICATED; 1993in-lb LUBRICATED
- 3) TIGHTEN M12 SCREWS TO: 1200in-lb NON-LUBRICATED; 803in-lb LUBRICATED

REVISIONS			
LTR	DESCRIPTION	DATE	APPROVED



INTERPRET PER ANSI-Y14.5M 1982



DESIGN, SPECIFICATIONS, AND DETAILS CONTAINED ON OR REFERENCED TO ON THIS DRAWING ARE PROPRIETARY TO THE ZENITH DIVISION, PARKER HANNIFIN CORPORATION AND MAY NOT BE REPRODUCED, MANUFACTURED, OR OTHERWISE USED WITHOUT THE WRITTEN CONSENT OF THE ZENITH DIVISION, PARKER HANNIFIN CORPORATION

UNLESS OTHERWISE SPECIFIED DIMENSIONS ARE IN INCH TOLERANCES  
 .XX ± 0.01  
 .XXX ± 0.005  
 ANG ± 0.5

MATERIAL SEE BILL OF MATERIALS ON SHEET 2 OF 3

DRAWN	LG	9.17.99
CHECKED		
PART WEIGHT = LBS		
SURFACE AREA = IN <sup>2</sup>		
MODEL NUMBER =	119009006200	
DRAWING =	119009006200	
PRO/ENGINEER DRAWING	SIZE D	

**Parker ZENITH PUMPS DIVISION**  
 5910 ELWIN BUCHANAN DRIVE, SANFORD, NC 27330  
 PARKER HANNIFIN CORPORATION

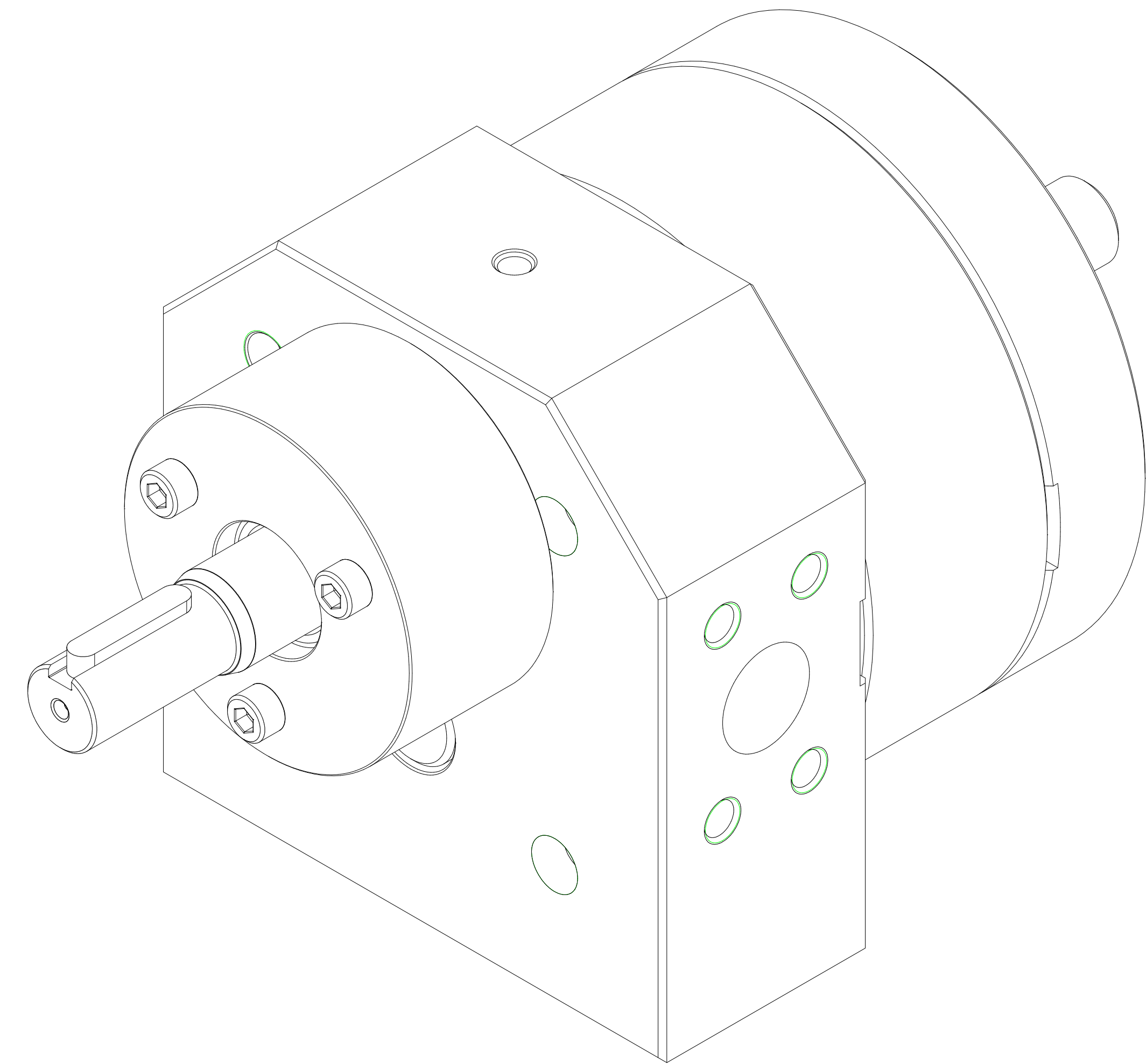
H-9000 TYPE PUMP  
 90 CC/REV

SCALE 3:4  
 SHEET 1 OF 3

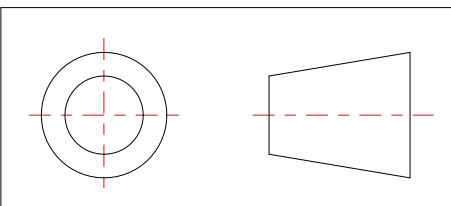
DRAWING NUMBER  
 11-90090-0620-0

ITEM No.	PART NUMBER	PART NAME	MATERIAL	QTY
	119009006200	H-9000 TYPE PUMP		1
2	157956800293	SHAFT, DRIVE	D2	1
3	156925100304	PLATE, GEAR	D2	1
7	146915100062	ASSEMBLY, REAR PLATE		1
33	156915100244	PLATE, REAR	AISI D2	1
34	150451303321	BEARING, SLEEVE	D2	1
8	146945200062	ASSEMBLY, FRONT PLATE		1
31	156945200244	PLATE, FRONT	AISI D2	1
32	150451303271	BEARING, SLEEVE	D2	1
10	151609100091	DOWEL, HOLLOW	D2	2
5	154509811182	GEAR, DRIVING	D2	1
6	154509811172	GEAR, DRIVEN	D2	1
9	150115600092	ARBOR	D2	1
4	185600800131	KEY ROUND	FREE CUTTING STEEL 9 SMN 28 K	1
17	187861611602	SHCS M16X2 X 160 MM ALLOY 12.9		4
18	185600800021	KEY, SQUARE	STEEL 50-1 K	1
19	187860611102	SHCS M6X1 X 110MM ALLOY 12.9		1
20	181831800212	RING - RETAINING	PH 15-7 MO	1
11	155402000183	HOUSING, SEAL	AISI 440C	1
13	187900300511	MECHANICAL SEAL	X F51 I 010 I	1
15	187650401631	O-RING	FLUOROCARBON	1
16	187860810652	SHCS M8X1.25 X 65MM ALLOY 12.9		3

REVISIONS			
LTR	DESCRIPTION	DATE	APPROVED



INTERPRET PER ANSI-Y14.5M 1982



DESIGN, SPECIFICATIONS, AND DETAILS CONTAINED ON OR REFERENCED TO ON THIS DRAWING ARE PROPRIETARY TO THE ZENITH DIVISION, PARKER HANNIFIN CORPORATION AND MAY NOT BE REPRODUCED, MANUFACTURED, OR OTHERWISE USED WITHOUT THE WRITTEN CONSENT OF THE ZENITH DIVISION, PARKER HANNIFIN CORPORATION

UNLESS OTHERWISE SPECIFIED DIMENSIONS ARE IN INCH TOLERANCES

.XX ± 0.01  
.XXX ± 0.005  
ANG ± 0.5

MATERIAL

SEE BILL OF MATERIALS ON SHEET 2 OF 3

DRAWN LG 9.17.99

CHECKED

PART WEIGHT = LBS

SURFACE AREA = IN<sup>2</sup>

MODEL NUMBER = 119009006200  
DRAWING = 119009006200

PRO/ENGINEER DRAWING

SIZE D



**ZENITH PUMPS DIVISION**

5910 ELWIN BUCHANAN DRIVE, SANFORD, NC 27330  
PARKER HANNIFIN CORPORATION

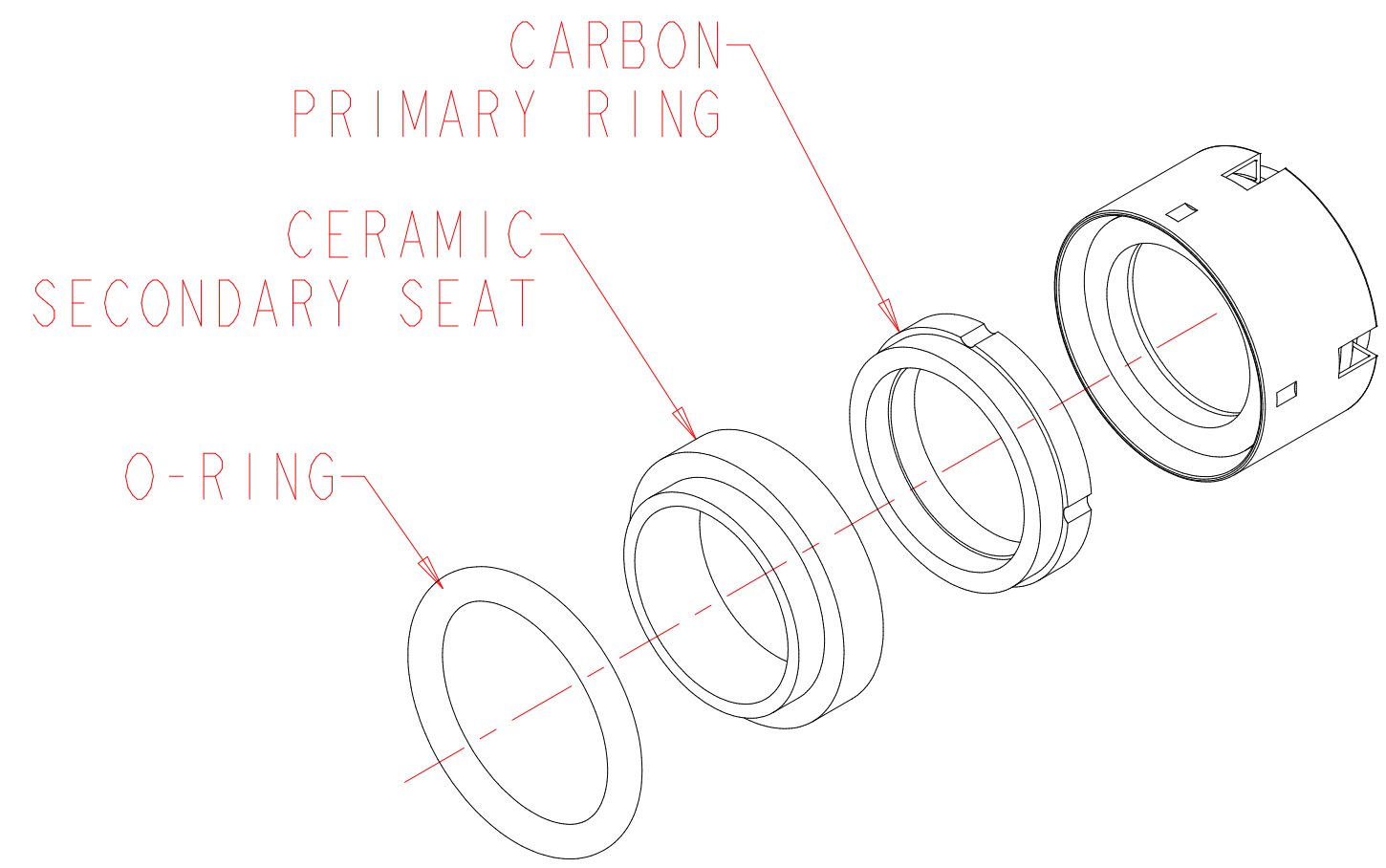
H-9000 TYPE PUMP  
90 CC/REV

SCALE 1:1  
SHEET 2 OF 3

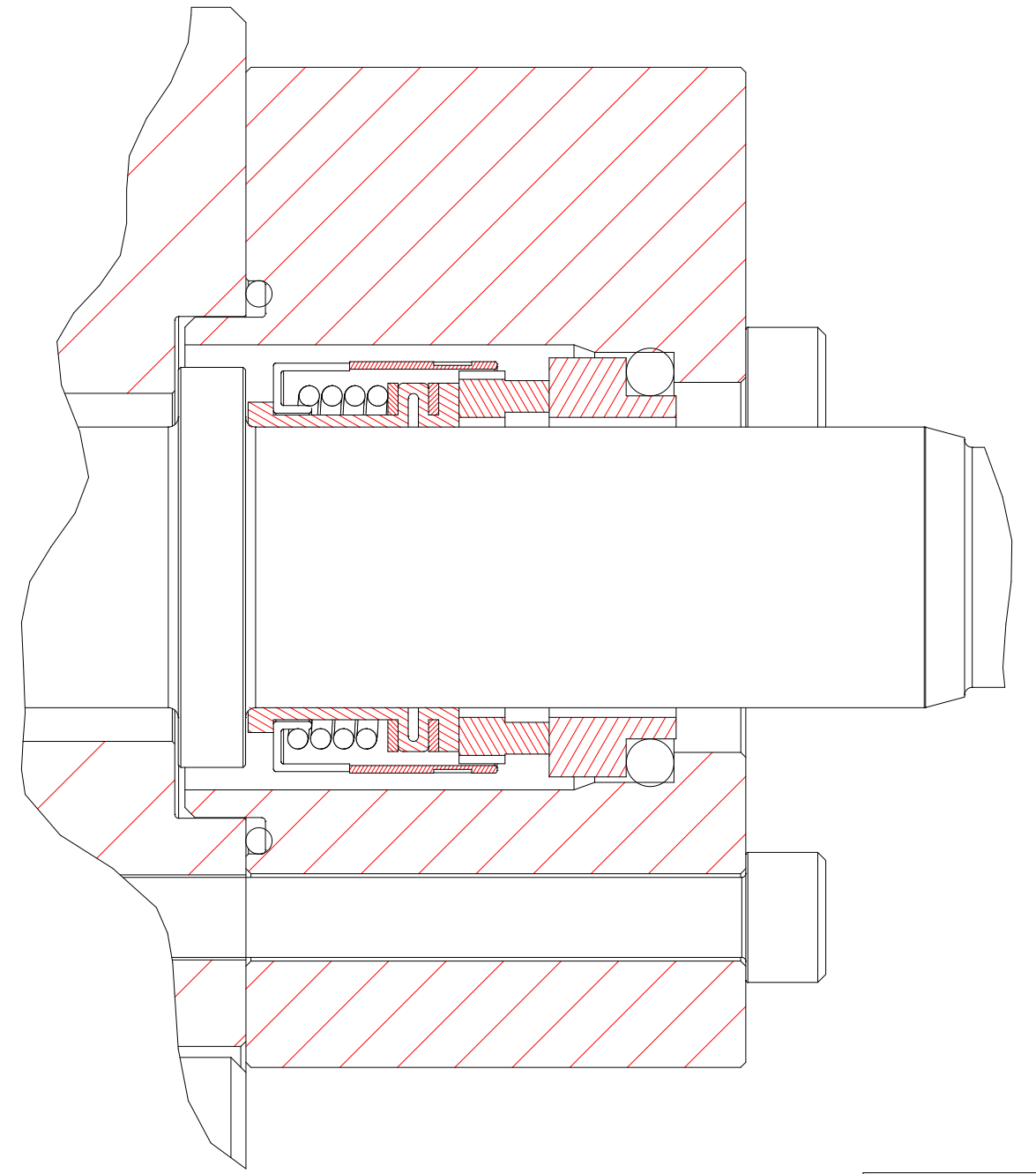
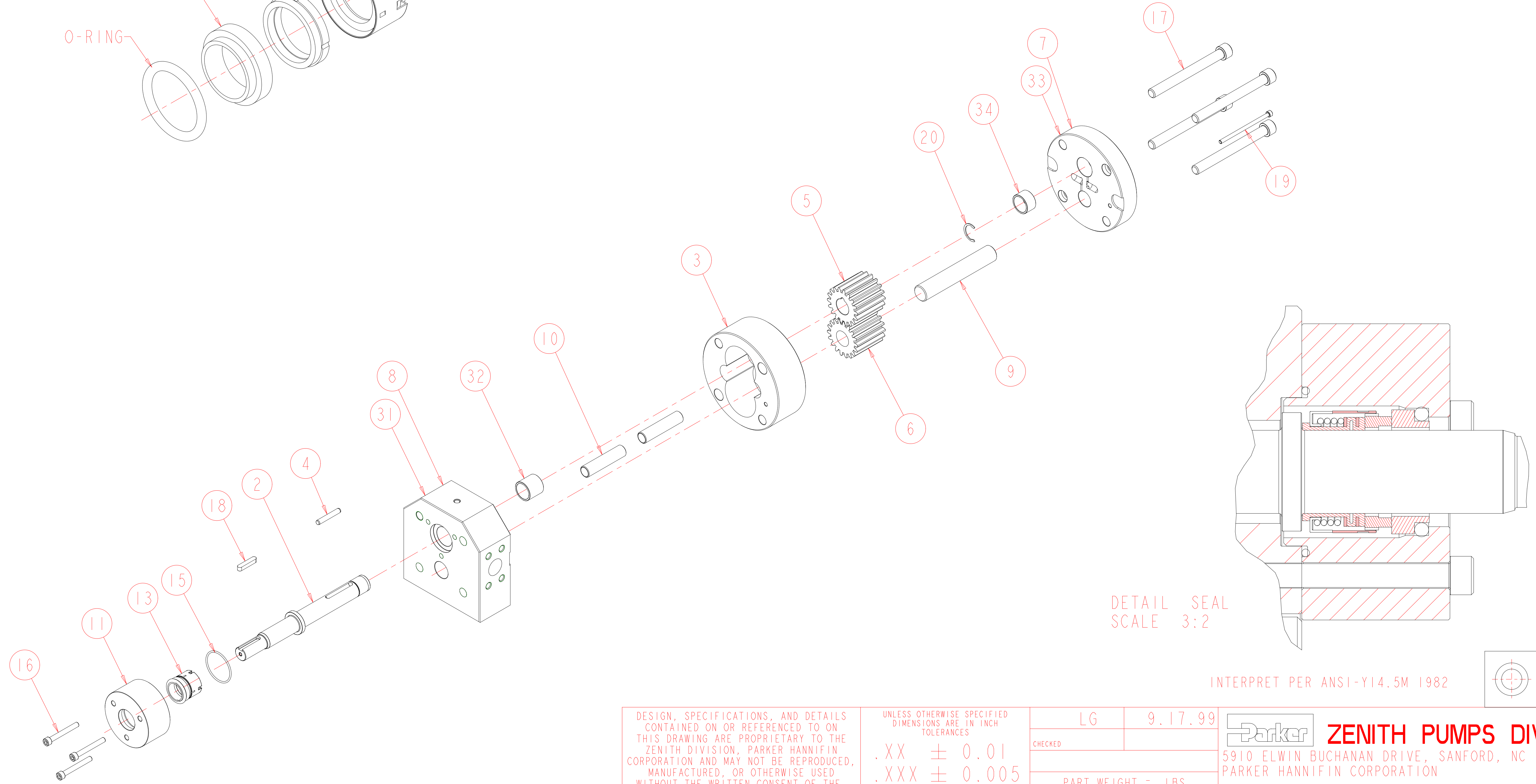
DRAWING NUMBER

11-90090-0620-0

REVISIONS			
LTR	DESCRIPTION	DATE	APPROVED



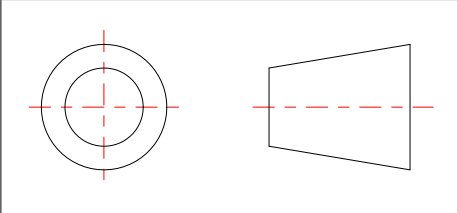
MECHANICAL SEAL ASSEMBLY  
SCALE 1:1



DETAIL SEAL  
SCALE 3:2

LUBRICATE UNDERSIDE OF CAP & THREADS ON FASTENERS WITH ANTI-SEIZE COMPOUND PRIOR TO ASSEMBLY.

INTERPRET PER ANSI-Y14.5M 1982



DESIGN, SPECIFICATIONS, AND DETAILS CONTAINED ON OR REFERENCED TO ON THIS DRAWING ARE PROPRIETARY TO THE ZENITH DIVISION, PARKER HANNIFIN CORPORATION AND MAY NOT BE REPRODUCED, MANUFACTURED, OR OTHERWISE USED WITHOUT THE WRITTEN CONSENT OF THE ZENITH DIVISION, PARKER HANNIFIN CORPORATION	UNLESS OTHERWISE SPECIFIED DIMENSIONS ARE IN INCH TOLERANCES  .XX ± 0.01 .XXX ± 0.005 ANG ± 0.5	LG	9.17.99	<b>ZENITH PUMPS DIVISION</b> 5910 ELWIN BUCHANAN DRIVE, SANFORD, NC 27330 PARKER HANNIFIN CORPORATION
		CHECKED		
MATERIAL  SEE BILL OF MATERIALS ON SHEET 2 OF 3		PART WEIGHT =	LBS	H-9000 TYPE PUMP 90 CC/REV
		SURFACE AREA =	IN <sup>2</sup>	
		MODEL NUMBER = 119009006200 DRAWING = 119009006200	PRO/ENGINEER DRAWING	SIZE D