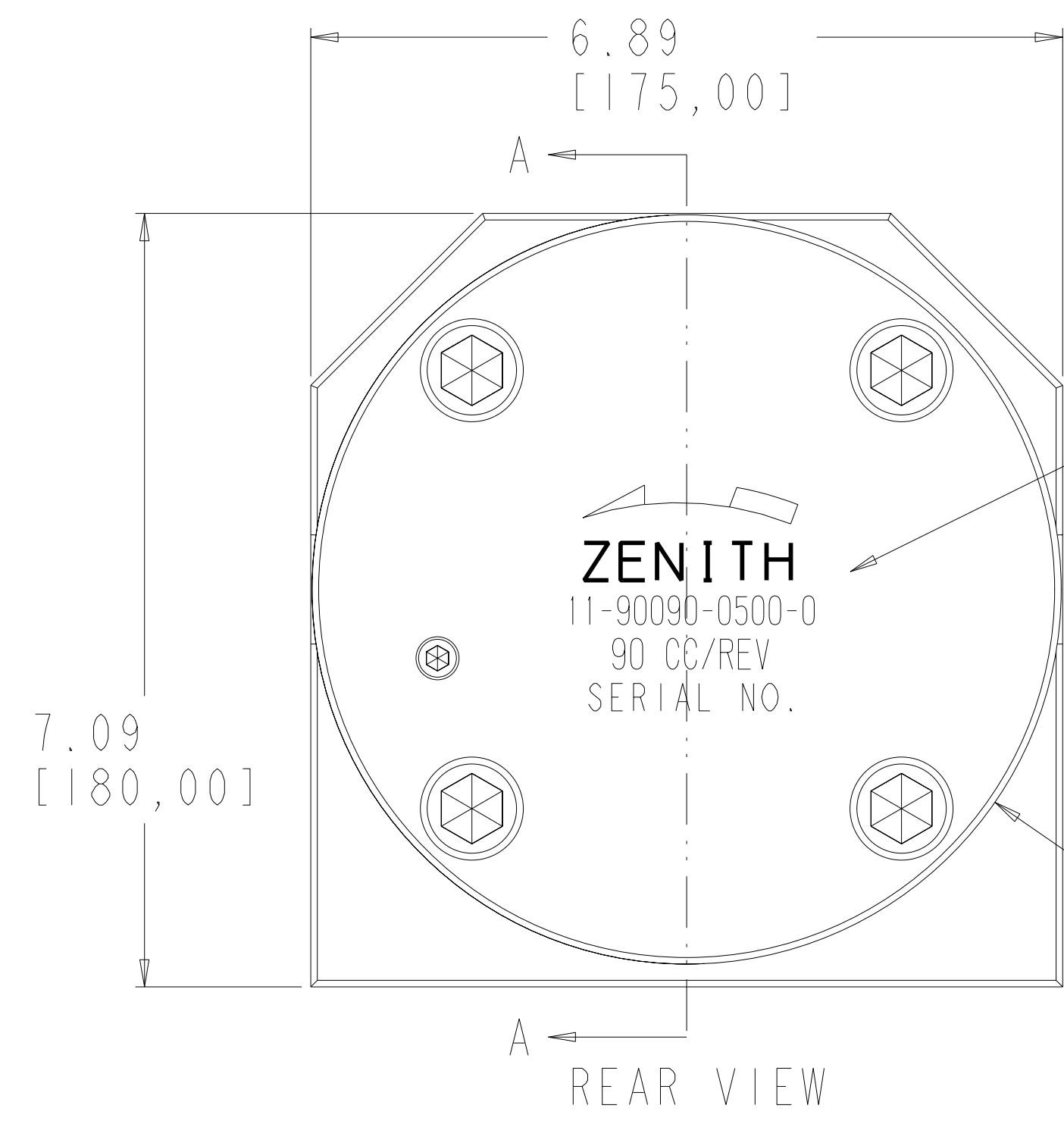


**NOTES:**

- 1) TIGHTEN M8 PACKING HOUSING BOLTS TO: 350in-lb NON-LUBRICATED; 232in-lb LUBRICATED
- 2) TIGHTEN M16 BINDER SCREWS TO: 2900in-lb NON-LUBRICATED; 1993in-lb LUBRICATED
- 3) TIGHTEN M12 FLANGE SCREWS TO: 1200in-lb NON-LUBRICATED; 803in-lb LUBRICATED
- 4) INSTALL HEX SCREWS FINGER TIGHT FOR SHIPPING
- 5) UPON INSTALLATION, TIGHTEN HEX SCREWS TO CONTROL LEAKAGE

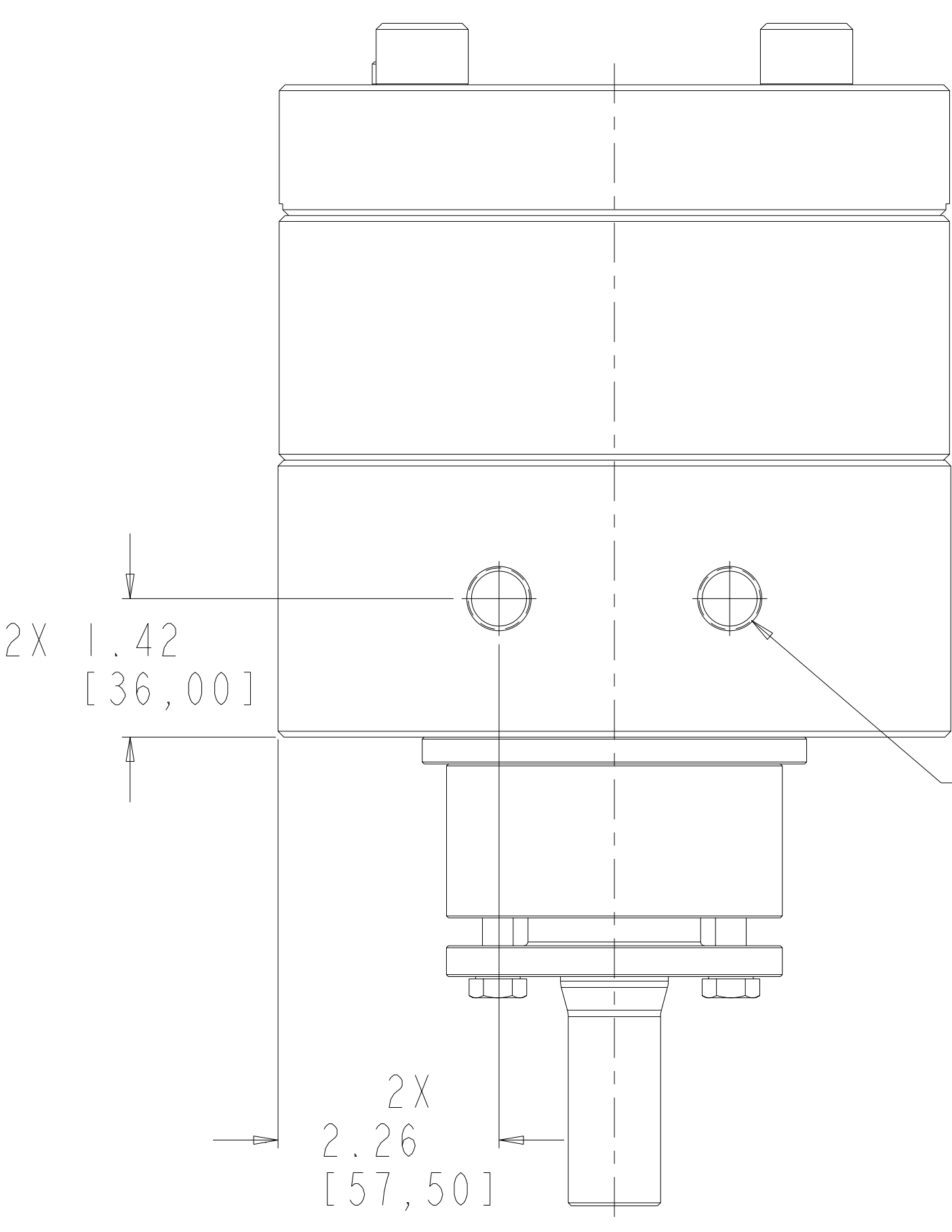
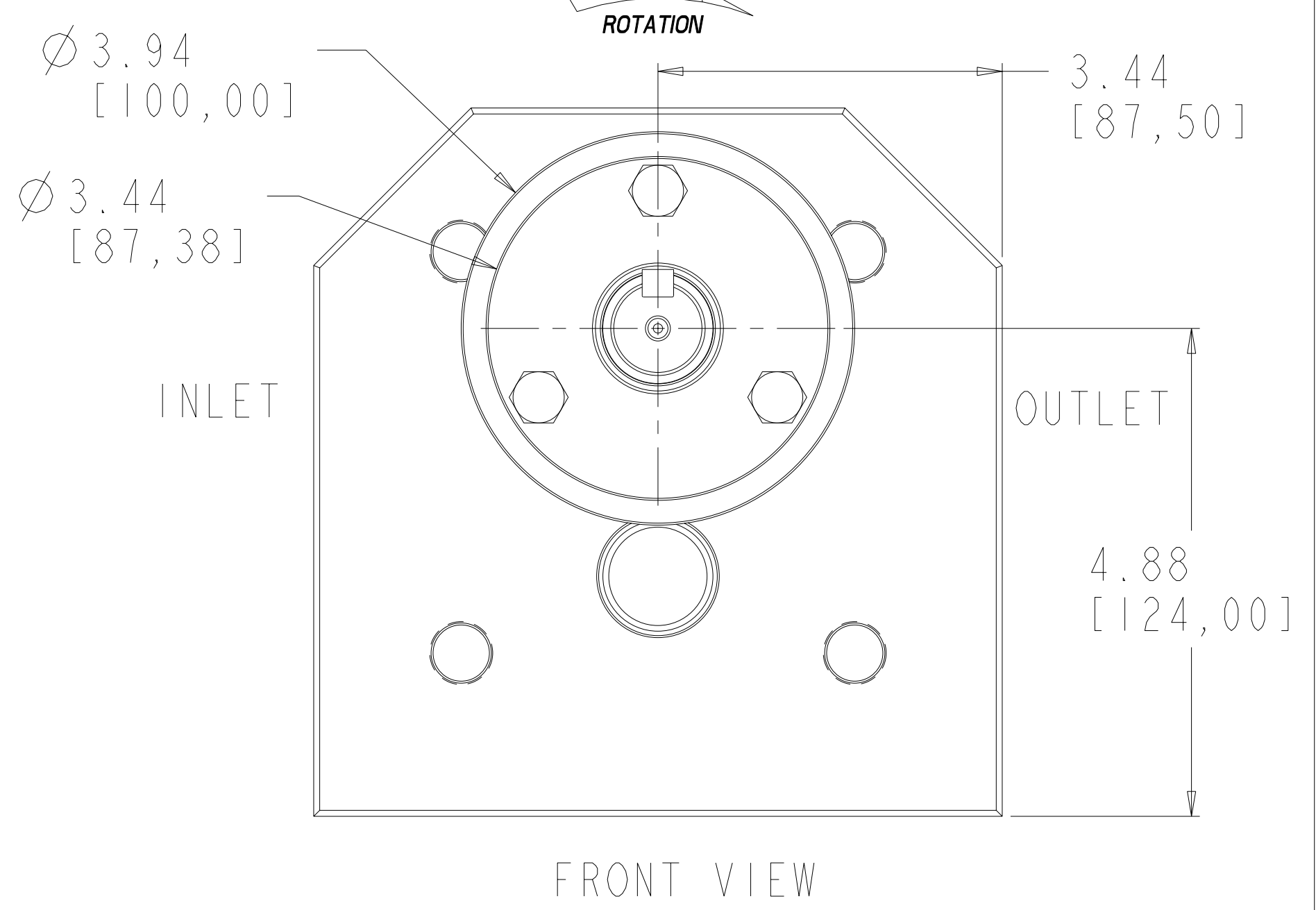
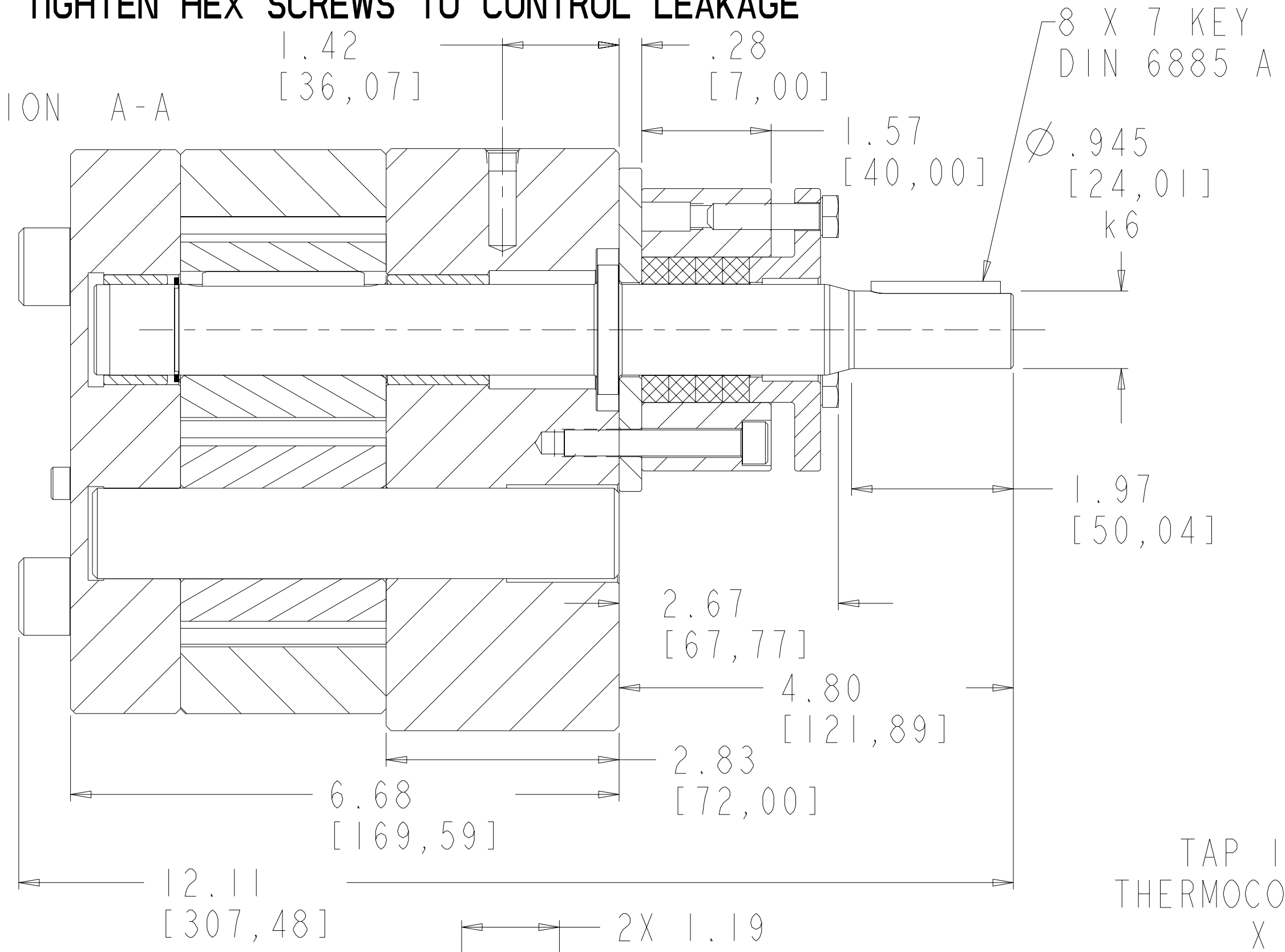
REVISIONS			
LTR	DESCRIPTION	DATE	APPROVED
F	14-69452-0006-2 WAS 15-69452-0013-4	03-18-98	167-98
	14-69151-0006-2 WAS 15-69151-0013-4		
	ADDED 18-18318-0021-2 & LUBE NOTE		
	UPDATED SERIES 9000 PUMP DATA	03-18-98	620-97
G	ADD ASSEMBLY NOTE	12-01-05	357-2005



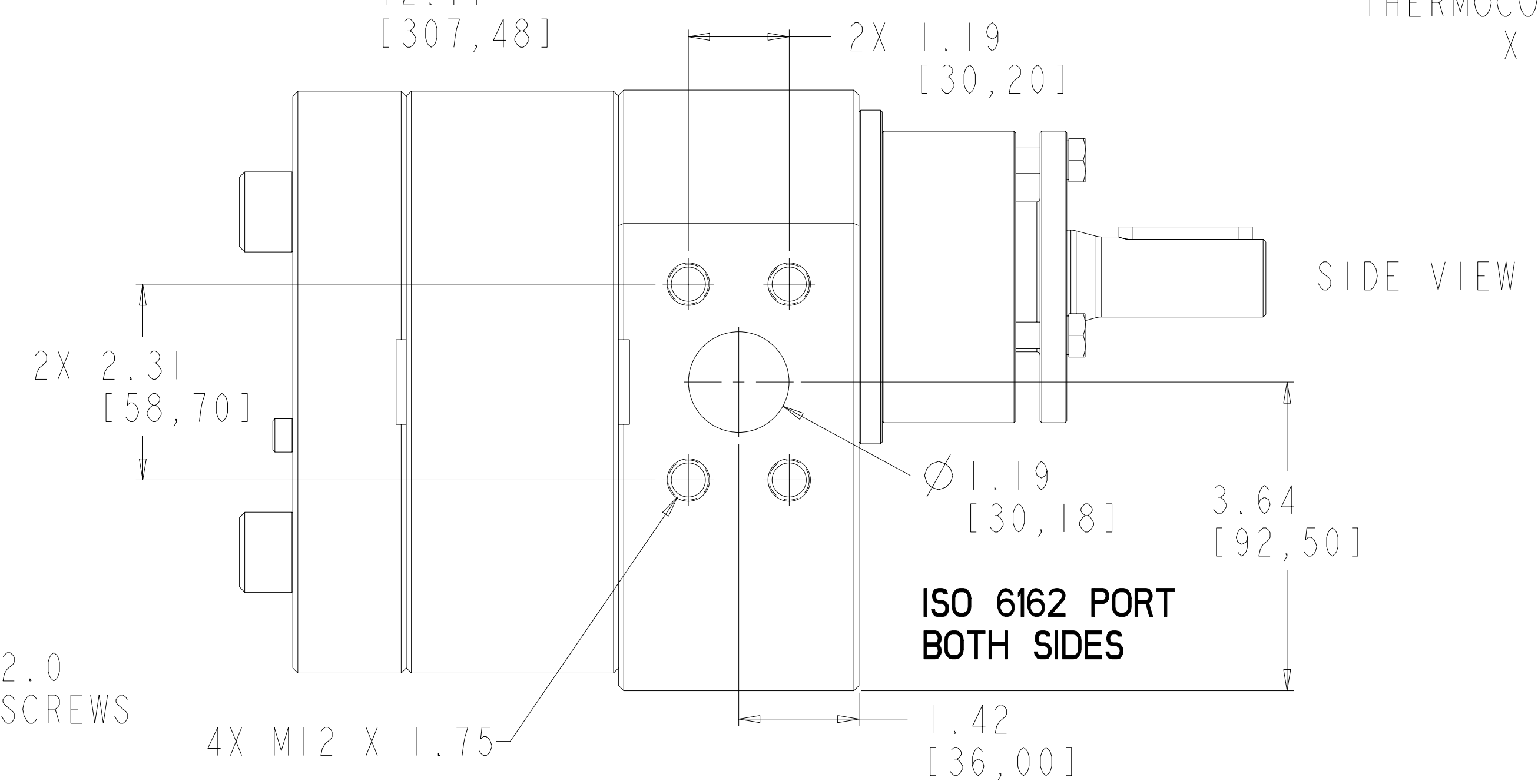
LASER ETCH PUMP DATA

ZENITH  
11-90090-0500-0  
90 CC/REV  
SERIAL NO.

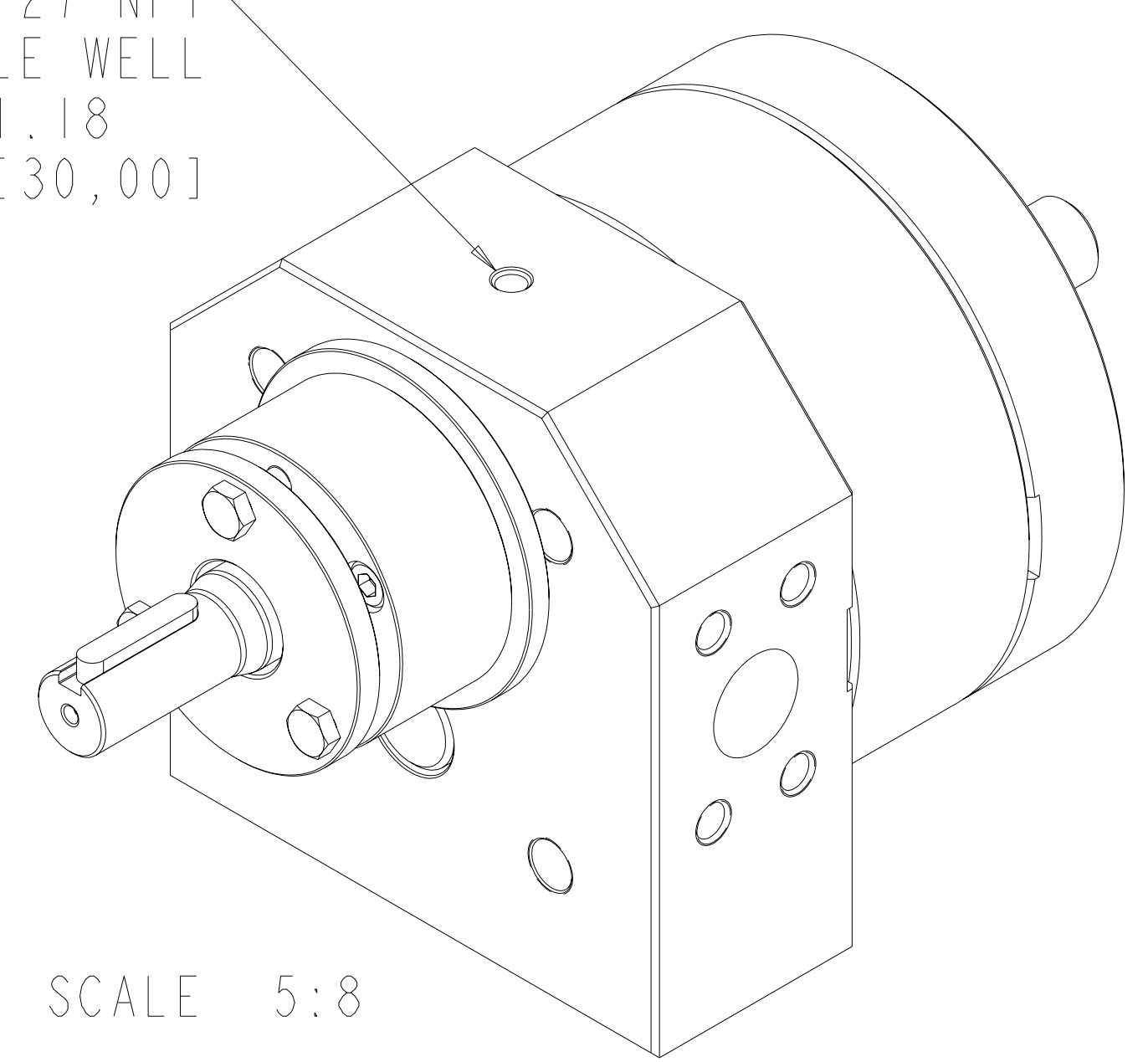
SECTION A-A



2X M16 X 2.0 MOUNTING SCREWS



TAP 1/8-27 NPT THERMOCOUPLE WELL X 1.18 [30,00]



INTERPRET PER ASME-Y14.5M 1994

THIS DOCUMENT CONTAINS INFORMATION THAT IS CONFIDENTIAL AND PROPRIETARY TO ZENITH PUMPS, COLFAX CORPORATION "COLFAX". THIS DOCUMENT IS FURNISHED ON THE UNDERSTANDING THAT THE DOCUMENT AND THE INFORMATION IT CONTAINS WILL NOT BE COPIED OR DISCLOSED TO OTHERS OR USED FOR ANY PURPOSE OTHER THAN CONDUCTING BUSINESS WITH COLFAX, AND WILL BE RETURNED AND ALL FURTHER USE DISCONTINUED UPON REQUEST BY COLFAX.

UNLESS OTHERWISE SPECIFIED DIMENSIONS ARE IN INCH TOLERANCES

.XX ± 0.01  
.XXX ± 0.005  
ANG ± 0.5

MATERIAL SEE BILL OF MATERIALS

DRAWN	MJW	06-11-95
CHECKED		
PART WEIGHT = LBS		
SURFACE AREA = IN <sup>2</sup>		
MODEL NUMBER =	119009005000	
DRAWING =	119009005000	
PRO/ENGINEER DRAWING	SIZE D	

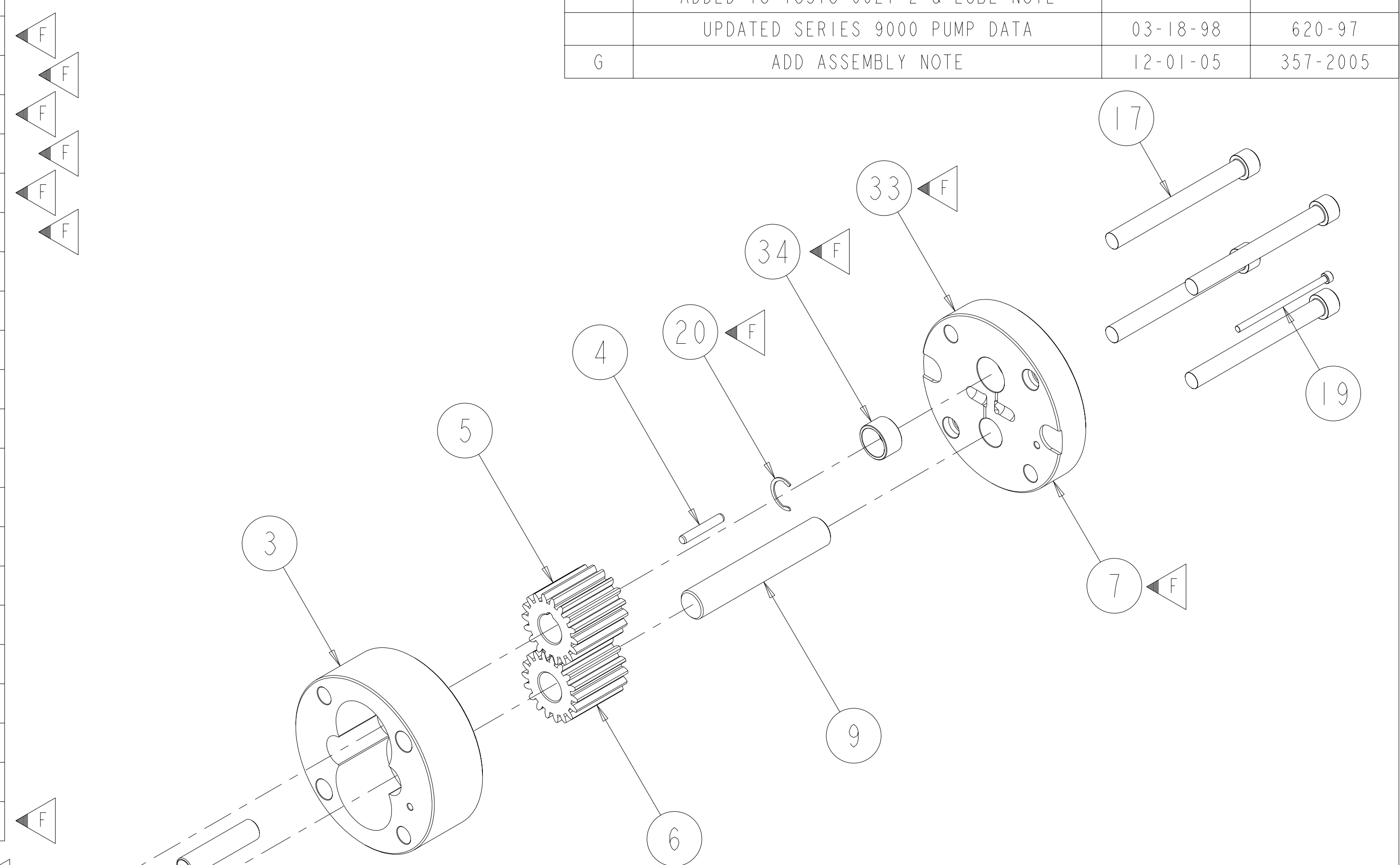


**ZENITH PUMPS**  
5910 ELWIN BUCHANAN DRIVE  
SANFORD, NC 27330

H-9000 TYPE PUMP		DRAWING NUMBER
90 CC/REV		
SCALE 3:4	11-90090-0500-0	
SHEET 1 OF 2		

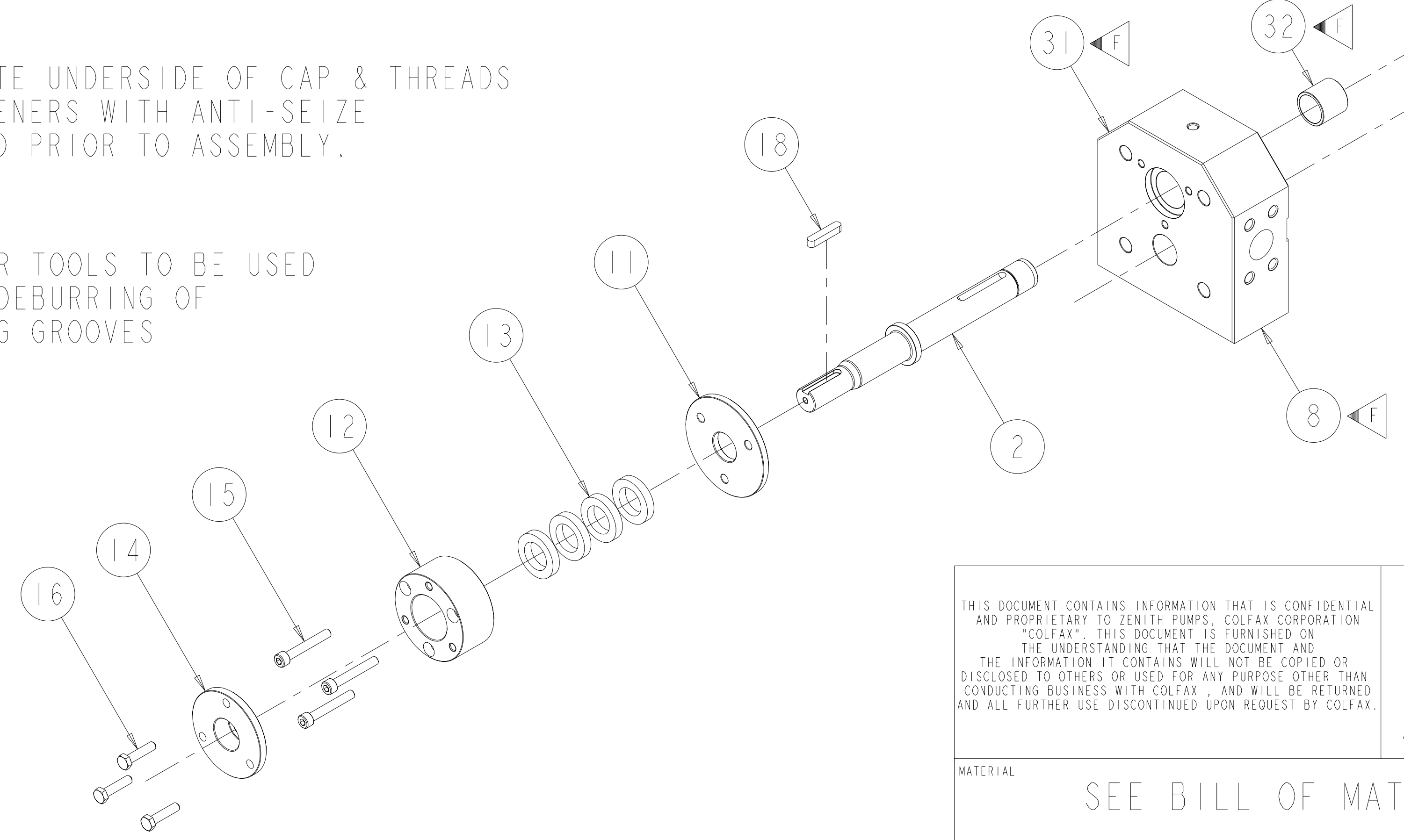
ITEM No.	PART NUMBER	PART NAME	MATERIAL	QTY
	119009005000	H-9000 TYPE PUMP	SEE BILL OF MATERIALS	1
2	157956800293	SHAFT, DRIVE	D2	1
3	156925100304	PLATE, GEAR	D2	1
7	146915100062	ASSEMBLY, REAR PLATE		1
33	156915100244	PLATE, REAR	AISI D2	1
34	150451303321	BEARING, SLEEVE	D2	1
8	146945200062	ASSEMBLY, FRONT PLATE		1
31	156945200244	PLATE, FRONT	AISI D2	1
32	150451303271	BEARING, SLEEVE	D2	1
10	151609100091	DOWEL, HOLLOW	D2	2
5	154509811182	GEAR, DRIVING	D2	1
6	154509811172	GEAR, DRIVEN	D2	1
9	150115600092	ARBOR	D2	1
4	185600800131	KEY ROUND	FREE CUTTING STEEL 9 SMN 28 K	1
11	156371000093	PLATE, COLLAR	AISI D2	1
12	155400601813	HOUSING, PACKING	4140	1
13	187900101811	SEAL, PACKING	GRAFOIL	4
14	155100102073	GLAND, PACKING	4140	1
16	187890810352	HHCS M8X1.25 X 35MM ALLOY GRADE 8.8		3
15	187860810552	SHCS M8X1.25 X 55MM ALLOY 12.9		3
17	187861611602	SHCS M16X2 X 160 MM ALLOY 12.9		4
18	185600800021	KEY, SQUARE	STEEL 50-1 K	1
19	187860611102	SHCS M6X1 X 110MM ALLOY 12.9		1
20	181831800212	RING - RETAINING	PH 15-7 MO	1

REVISIONS			
LTR	DESCRIPTION	DATE	APPROVED
F	14-69452-0006-2 WAS 15-69452-0013-4	03-18-98	167-98
	14-69151-0006-2 WAS 15-69151-0013-4		
	ADDED 18-18318-0021-2 & LUBE NOTE		
	UPDATED SERIES 9000 PUMP DATA	03-18-98	620-97
G	ADD ASSEMBLY NOTE	12-01-05	357-2005

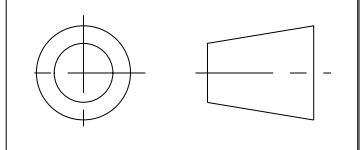


F LUBRICATE UNDERSIDE OF CAP & THREADS ON FASTENERS WITH ANTI-SEIZE COMPOUND PRIOR TO ASSEMBLY.

G NO POWER TOOLS TO BE USED IN THE DEBURRING OF TRAPPING GROOVES



INTERPRET PER ASME-Y14.5M 1994



THIS DOCUMENT CONTAINS INFORMATION THAT IS CONFIDENTIAL AND PROPRIETARY TO ZENITH PUMPS, COLFAX CORPORATION "COLFAX". THIS DOCUMENT IS FURNISHED ON THE UNDERSTANDING THAT THE DOCUMENT AND THE INFORMATION IT CONTAINS WILL NOT BE COPIED OR DISCLOSED TO OTHERS OR USED FOR ANY PURPOSE OTHER THAN CONDUCTING BUSINESS WITH COLFAX, AND WILL BE RETURNED AND ALL FURTHER USE DISCONTINUED UPON REQUEST BY COLFAX.

UNLESS OTHERWISE SPECIFIED DIMENSIONS ARE IN INCH TOLERANCES  
 .XX ± 0.01  
 .XXX ± 0.005  
 ANG ± 0.5

MATERIAL  
 SEE BILL OF MATERIALS

DRAWN	MJW	06-11-95
CHECKED		
PART WEIGHT = LBS		
SURFACE AREA = IN <sup>2</sup>		
MODEL NUMBER =	119009005000	
DRAWING =	119009005000	
PRO/ENGINEER DRAWING	SIZE D	

**zenith Pumps**  
**ZENITH PUMPS**  
 5910 ELWIN BUCHANAN DRIVE  
 SANFORD, NC 27330

H-9000 TYPE PUMP  
 90 CC/REV

SCALE 5:16  
 SHEET 2 OF 2

DRAWING NUMBER  
 11-90090-0500-0