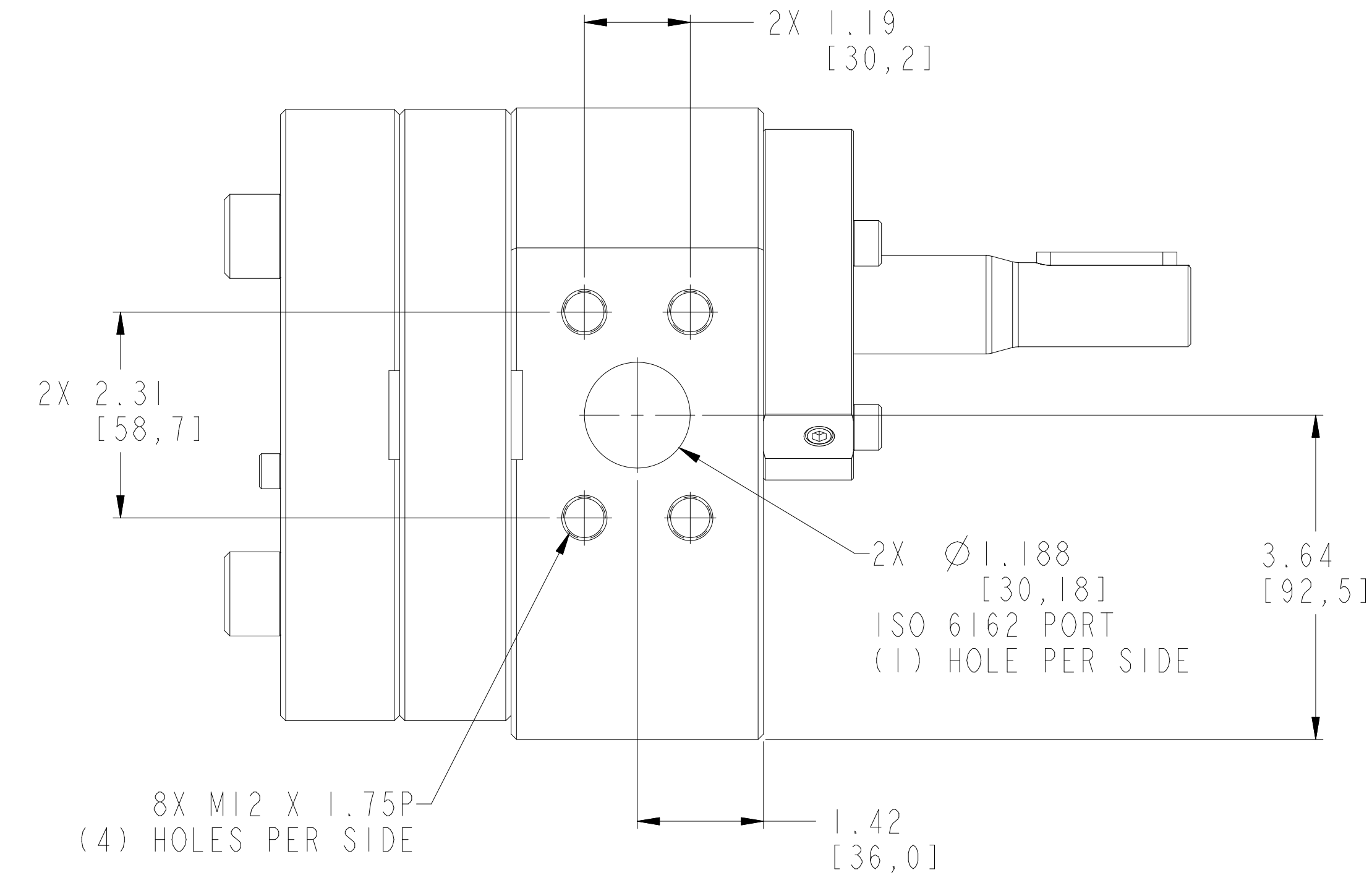
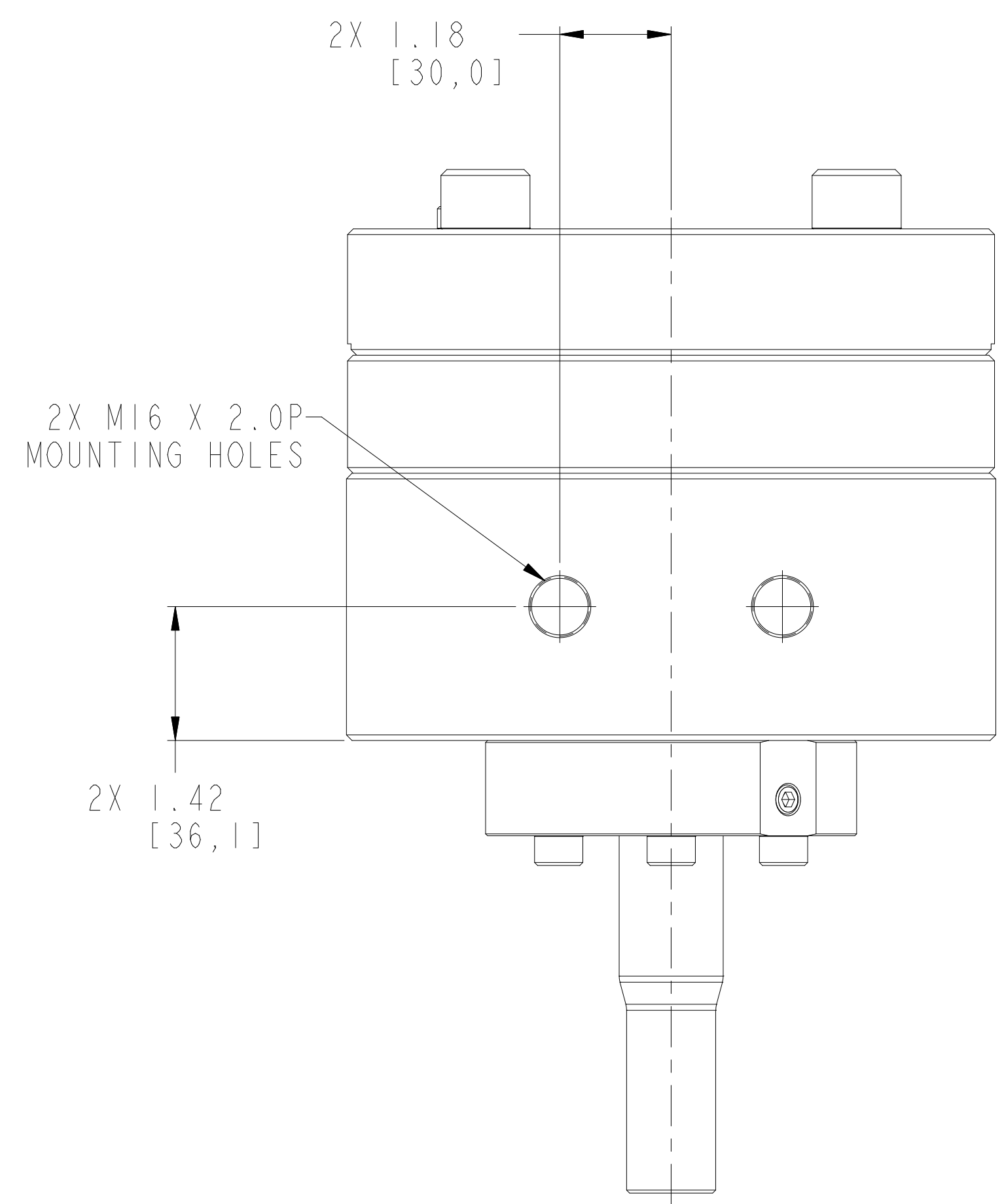
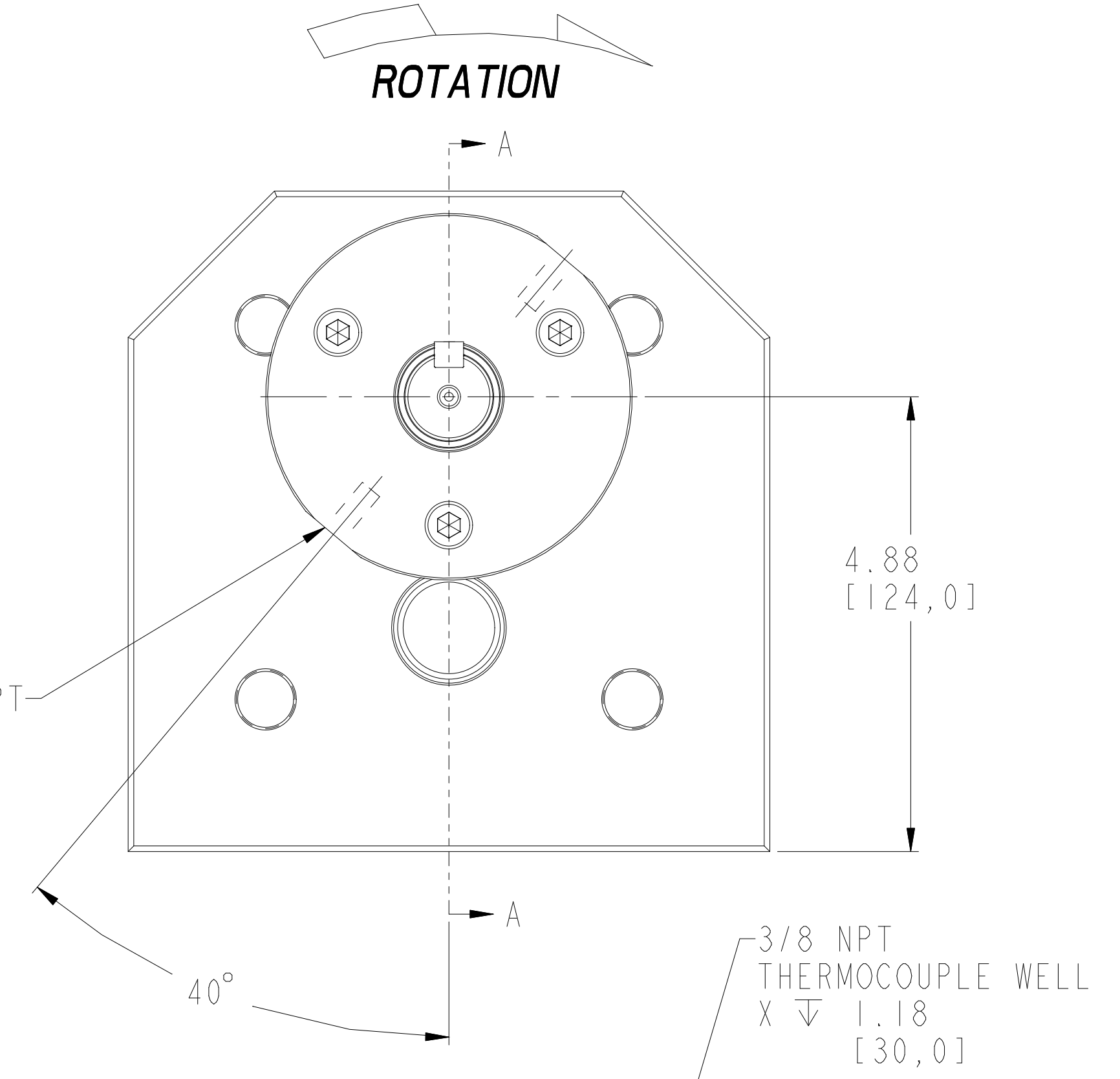
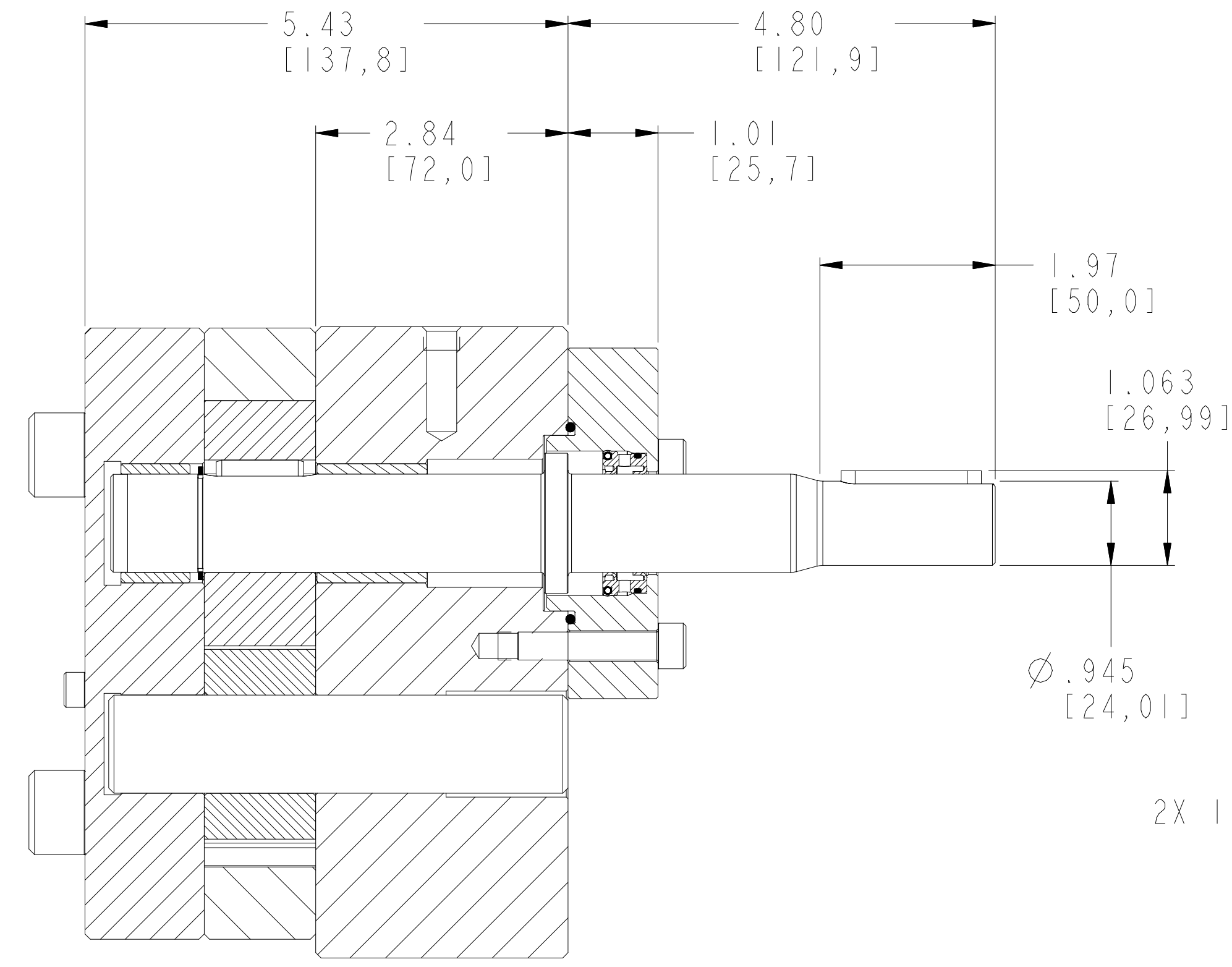
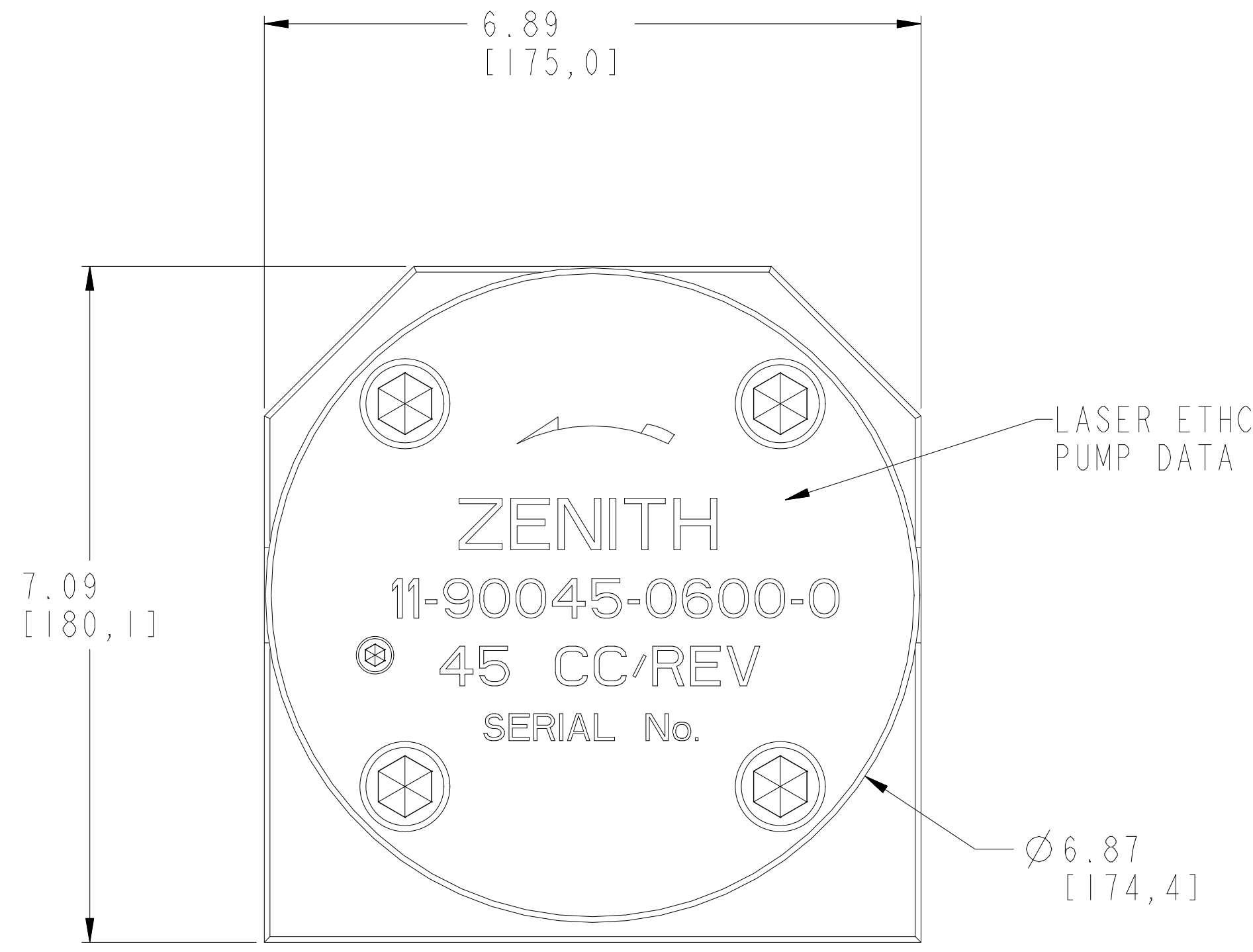


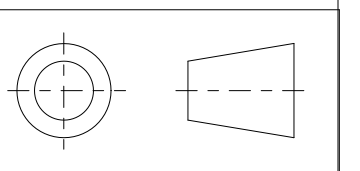
**SECTION A-A**

REVISIONS			
LTR	DESCRIPTION	DATE	ECN NO.
A	PUMP WAS D2 COMPONENTS	9/21/04	100-2004



**SCALE 1:2**

INTERPRET PER ASME-Y14.5M 1994



THIS DOCUMENT CONTAINS INFORMATION THAT IS CONFIDENTIAL AND PROPRIETARY TO ZENITH PUMPS, COLFAX CORPORATION "COLFAX". THIS DOCUMENT IS FURNISHED ON THE UNDERSTANDING THAT THE DOCUMENT AND THE INFORMATION IT CONTAINS WILL NOT BE COPIED OR DISCLOSED TO OTHERS OR USED FOR ANY PURPOSE OTHER THAN CONDUCTING BUSINESS WITH COLFAX, AND WILL BE RETURNED AND ALL FURTHER USE DISCONTINUED UPON REQUEST BY COLFAX.

UNLESS OTHERWISE SPECIFIED DIMENSIONS ARE IN INCH TOLERANCES  
.XX ± 0.01  
.XXX ± 0.005  
ANG ± 0.5

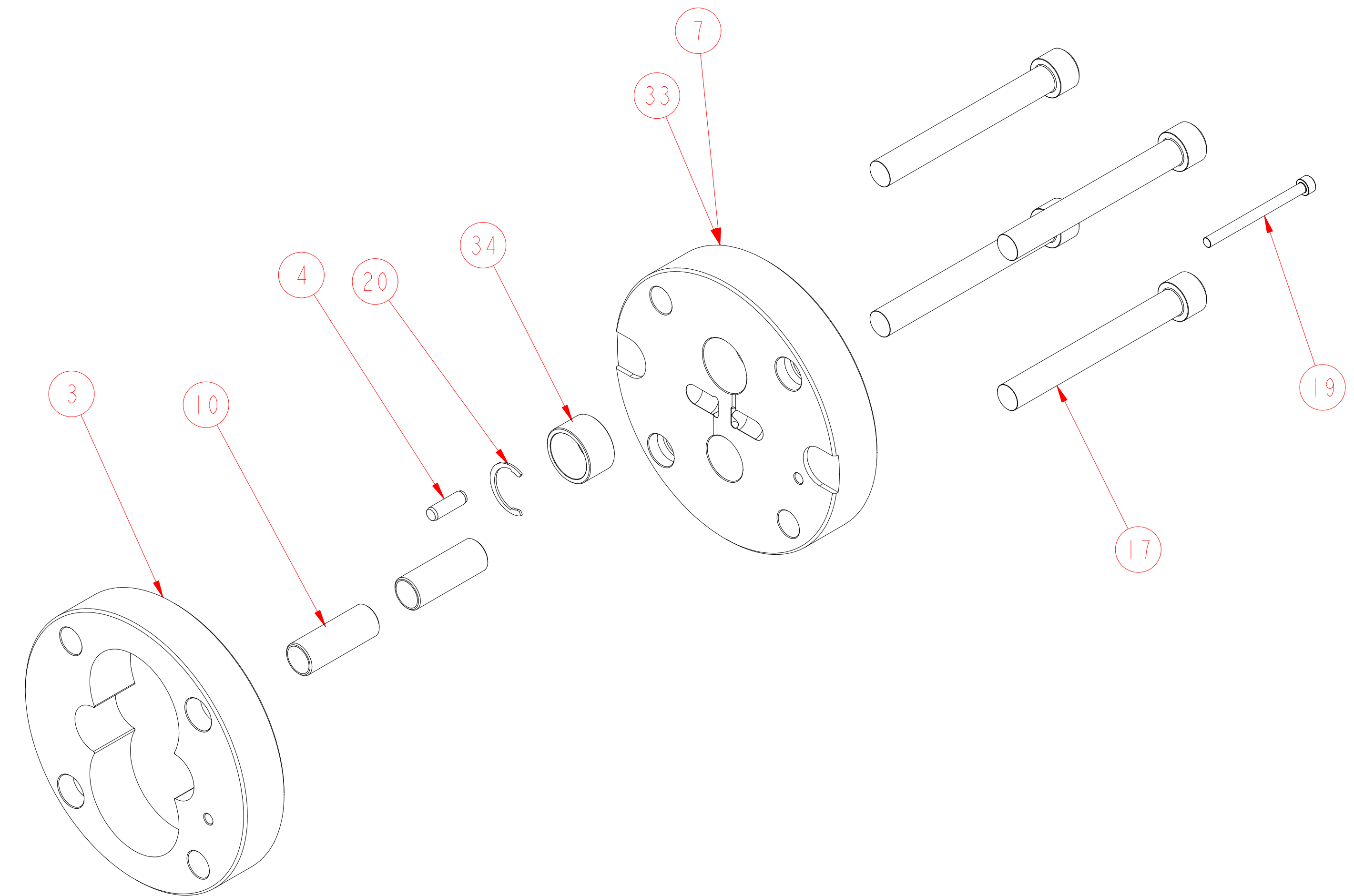
MATERIAL SEE BILL OF MATERIAL

DRAWN	LR	3.6.2003
CHECKED		
PART WEIGHT = LBS		
SURFACE AREA = IN <sup>2</sup>		
MODEL NUMBER =	119004506000	
DRAWING =	119004506000	
PRO/ENGINEER DRAWING	SIZE D	

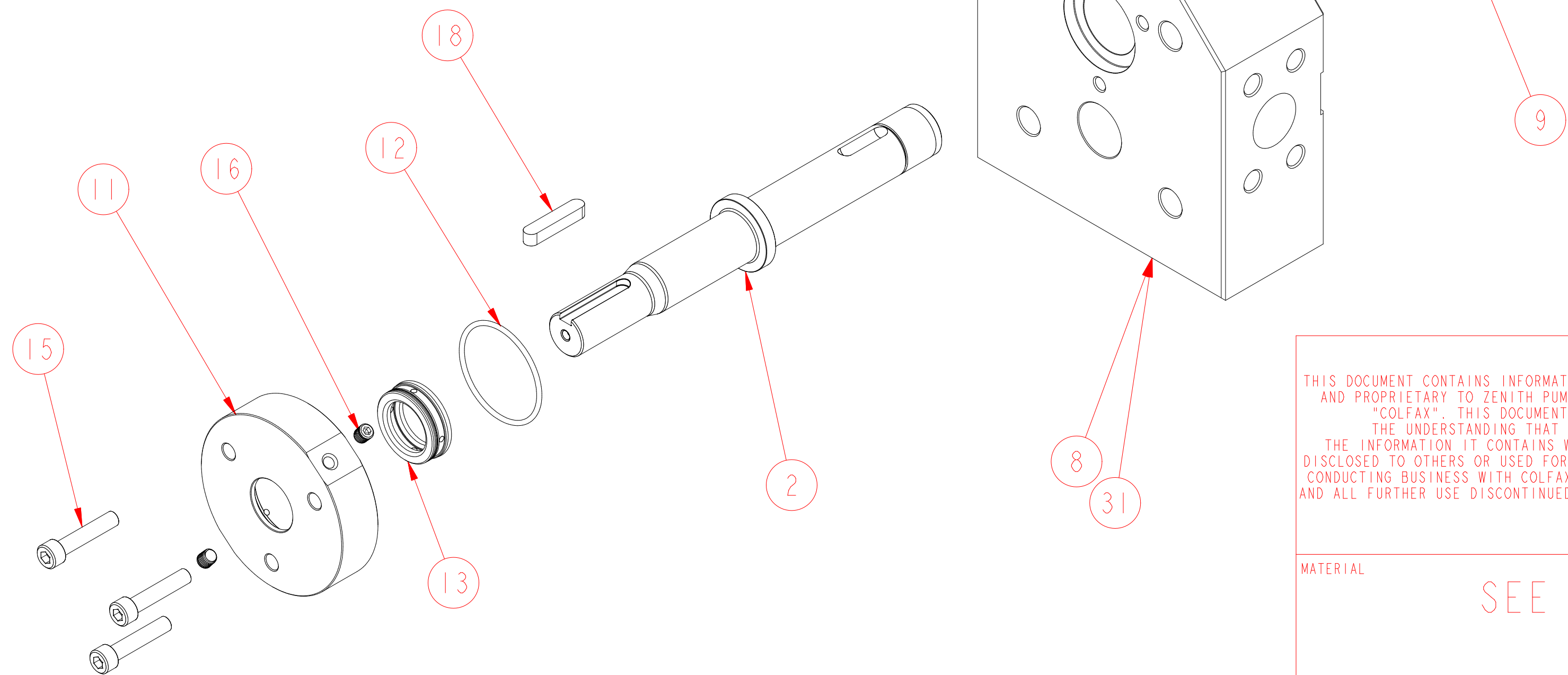
	<b>ZENITH PUMPS</b> 5910 ELWIN BUCHANAN DRIVE SANFORD, NC 27330	
	H-9000 45 CC/REV RAN 600 SINGLE STREAM PUMP	
SCALE 3:4	DRAWING NUMBER	
SHEET 1 OF 3	11-90045-0600-0	

ITEM No.	PART NUMBER	PART NAME	MATERIAL	QTY
	119004506000	H-9000 45 CC/REV RAN 600		1
2	157956801351	SHAFT, DRIVE	CPM-M4	1
4	185600800191	KEY ROUND	AISI 303 STAINLESS STEEL	1
5	154509812901	GEAR, DRIVING	CPM-M4	1
3	156925100791	PLATE, GEAR	M2	1
6	154509812911	GEAR, DRIVEN	CPM-M4	1
7	146915100501	ASSEMBLY, REAR PLATE		1
33	156915100601	PLATE, REAR	M2	1
34	150451603031	BEARING, SLEEVE	M4	1
8	146945200551	ASSEMBLY, FRONT PLATE		1
31	156945200661	PLATE, FRONT	M2	1
32	150451603041	BEARING, SLEEVE	M4	1
9	150115600821	ARBOR	CPM-M4	1
10	151609100651	DOWEL, HOLLOW	M2	2
11	155401900403	HOUSING, SEAL	AISI 440C	1
12	187650401881	O-RING	PTFE ENCAPSULATED	1
14	147900400042	SUB-ASSEMBLY, ASSY INSTRUCTION	SEE BILL OF MATERIALS	1
41	150013100672	SEAL ASSEMBLY TOOL	ACETAL COPOLYMER	1
13	187900401361	TANDEM LIP SEAL	CARB. FIBER FILLED PTFE	1
17	187861611302	SHCS M16X2 X 130 MM ALLOY 12.9		4
20	181831800212	RING - RETAINING	PH 15-7 MO	1
15	187860810402	SHCS M8X1.25 X 40MM ALLOY 12.9		3
19	187860610752	SHCS M6X1 X 75MM ALLOY 12.9		1
18	185600800021	KEY, SQUARE	STEEL 50-1 K	1
16	187300000071	PLUG, DRYSEAL TYPE	AUSTENITIC SS	2

REVISIONS			
LTR	DESCRIPTION	DATE	ECN NO.
A	PUMP WAS D2 COMPONENTS	9/21/04	100-2004

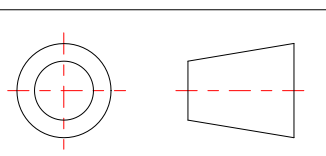


INSTALL SEAL ASSEMBLY TOOL ONTO SHAFT TO COVER KEYWAY DURING SEAL INSTALLATION, TO PREVENT DAMAGE.



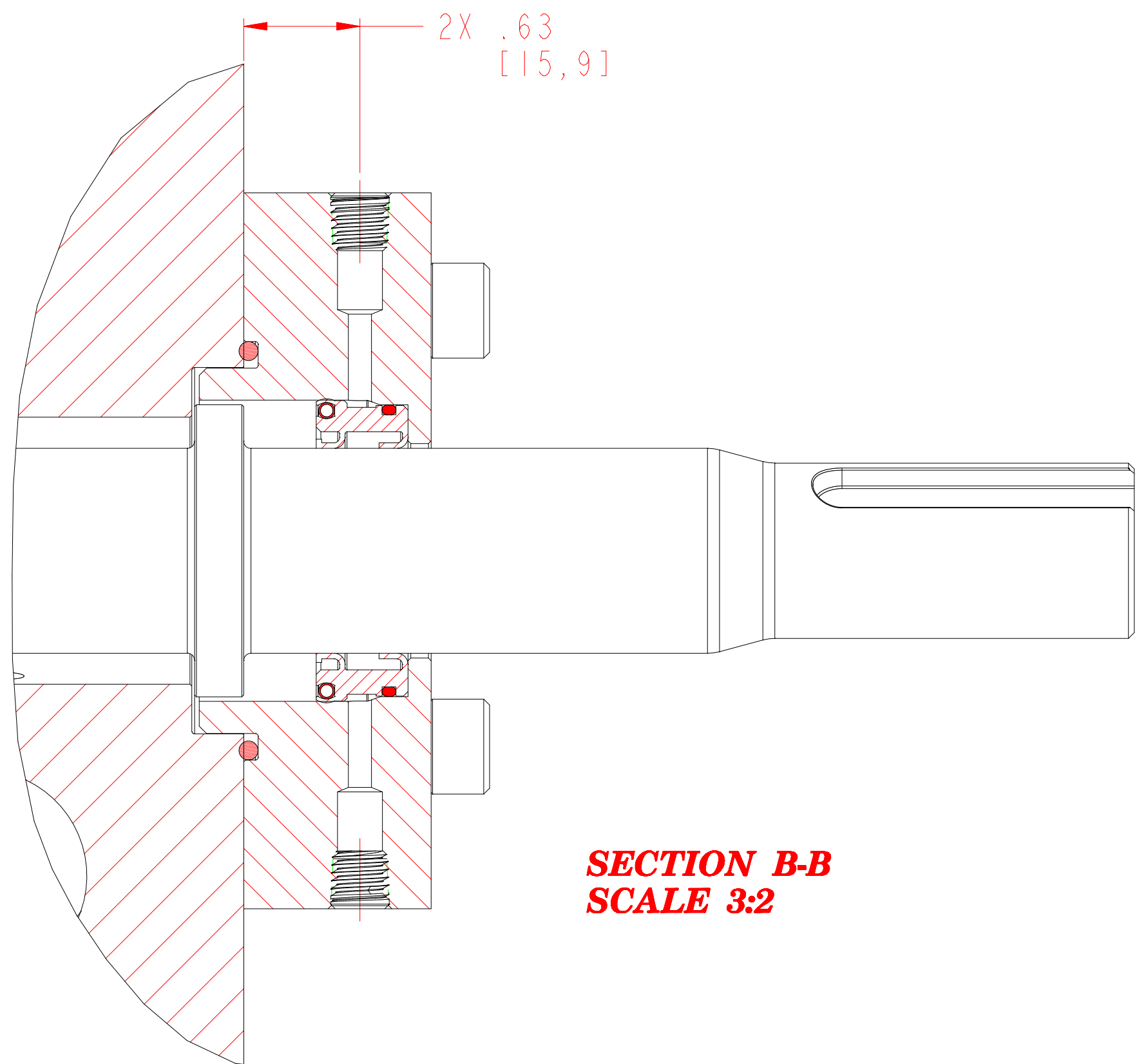
LUBRICATE UNDERSIDE OF CAP & THREADS ON FASTENERS WITH ANTI-SEIZE COMPOUND PRIOR TO ASSEMBLY.

INTERPRET PER ASME-Y14.5M 1994



<small>THIS DOCUMENT CONTAINS INFORMATION THAT IS CONFIDENTIAL AND PROPRIETARY TO ZENITH PUMPS, COLFAX CORPORATION "COLFAX". THIS DOCUMENT IS FURNISHED ON THE UNDERSTANDING THAT THE DOCUMENT AND THE INFORMATION IT CONTAINS WILL NOT BE COPIED OR DISCLOSED TO OTHERS OR USED FOR ANY PURPOSE OTHER THAN CONDUCTING BUSINESS WITH COLFAX, AND WILL BE RETURNED AND ALL FURTHER USE DISCONTINUED UPON REQUEST BY COLFAX.</small>	<small>UNLESS OTHERWISE SPECIFIED DIMENSIONS ARE IN INCH TOLERANCES</small> .XX ± 0.01 .XXX ± 0.005 ANG ± 0.5	DRAWN LR 3.6.2003 CHECKED	<b>ZENITH PUMPS</b> 5910 ELWIN BUCHANAN DRIVE SANFORD, NC 27330	
	MATERIAL SEE BILL OF MATERIAL	PART WEIGHT = LBS SURFACE AREA = IN <sup>2</sup> MODEL NUMBER = 119004506000 DRAWING = 119004506000		H-9000 45 CC/REV RAN 600 SINGLE STREAM PUMP
		PRO/ENGINEER DRAWING SIZE D	SCALE 1:2 SHEET 2 OF 3	DRAWING NUMBER 11-90045-0600-0

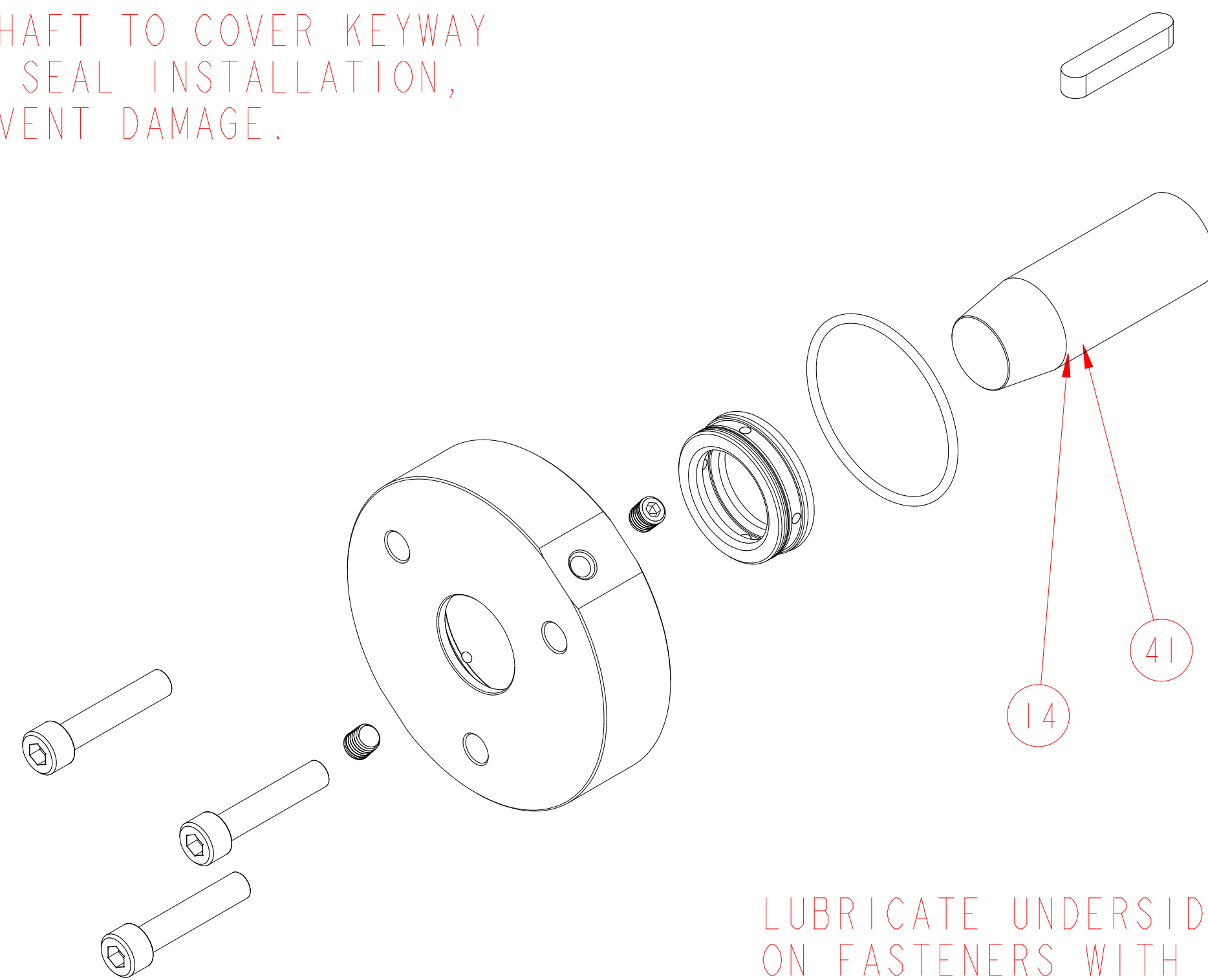
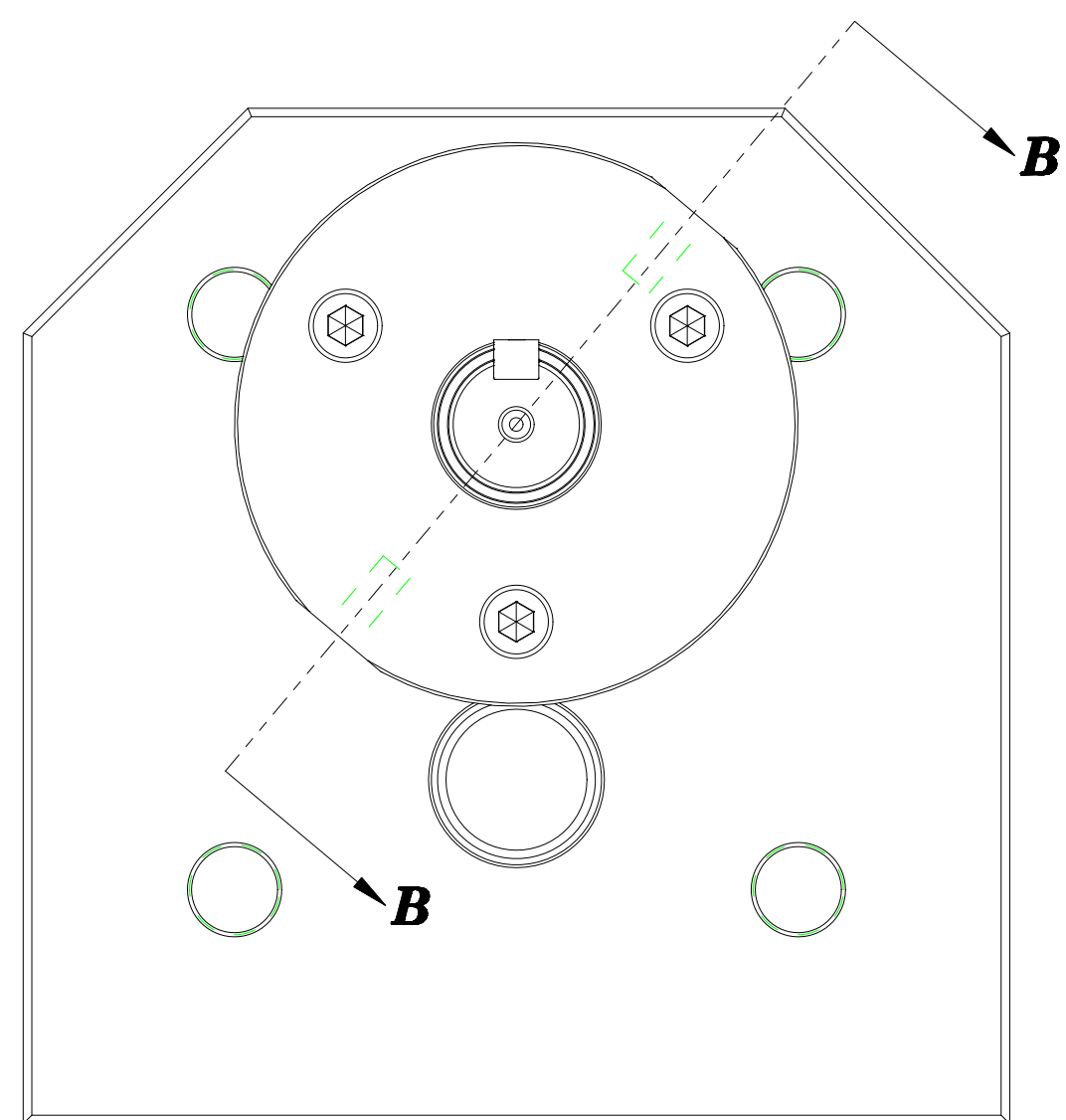
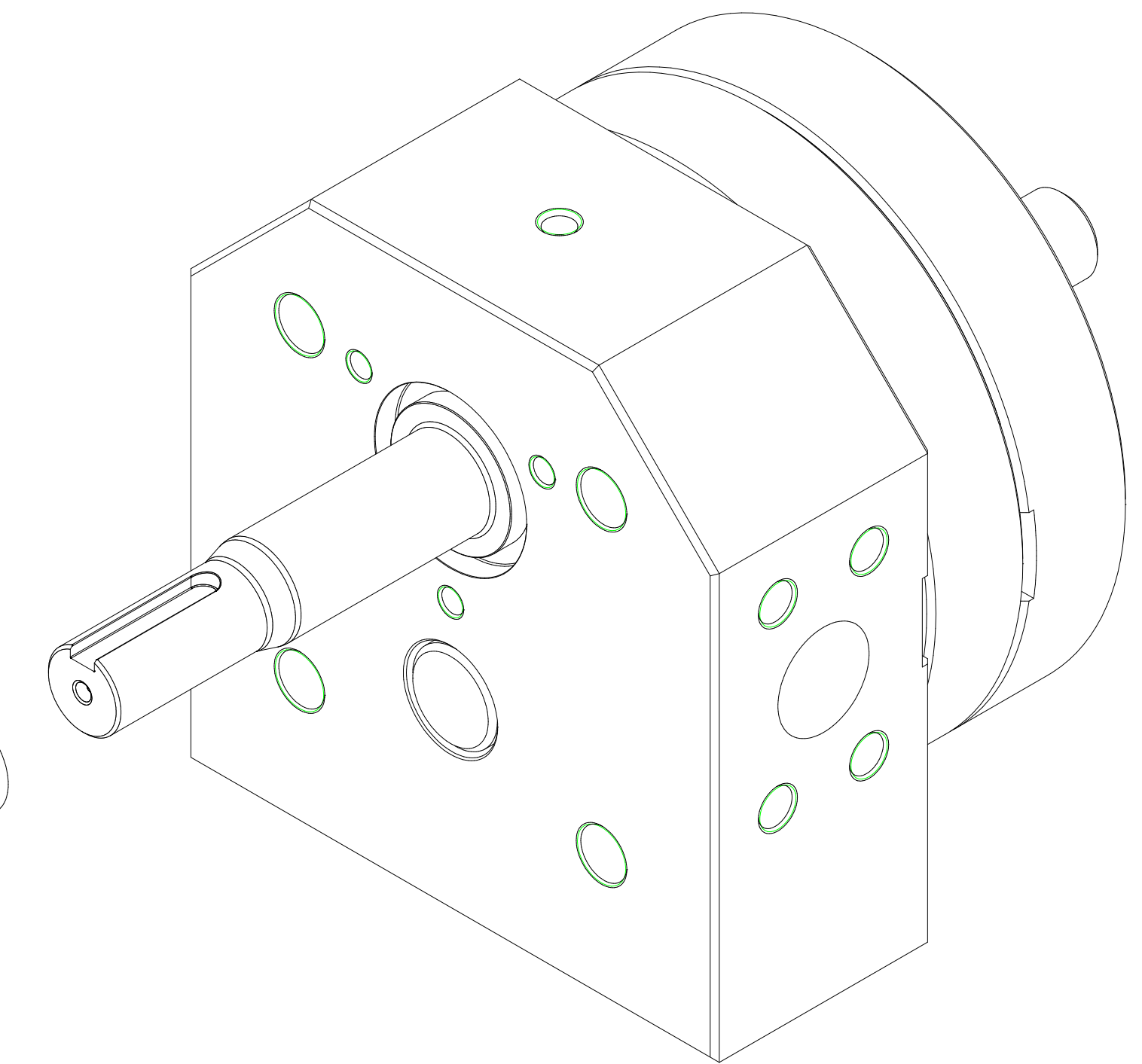
REVISIONS			
LTR	DESCRIPTION	DATE	ECN NO.
A	PUMP WAS D2 COMPONENTS	9/21/04	100-2004



**SECTION B-B  
SCALE 3:2**

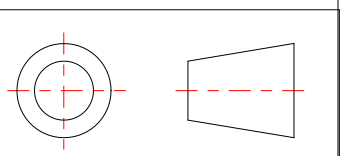
LUBRICATE ALL O-RINGS ON LIP SEAL WITH PARKER O-RING LUBE OR EQUIVALENT, PRIOR TO INSTALLING INTO HOUSING.


INSTALL SEAL ASSEMBLY TOOL ONTO SHAFT TO COVER KEYWAY DURING SEAL INSTALLATION, TO PREVENT DAMAGE.



LUBRICATE UNDERSIDE OF CAP & THREADS ON FASTENERS WITH ANTI-SEIZE COMPOUND PRIOR TO ASSEMBLY.

INTERPRET PER ASME-Y14.5M 1994



<small>THIS DOCUMENT CONTAINS INFORMATION THAT IS CONFIDENTIAL AND PROPRIETARY TO ZENITH PUMPS, COLFAX CORPORATION "COLFAX". THIS DOCUMENT IS FURNISHED ON THE UNDERSTANDING THAT THE DOCUMENT AND THE INFORMATION IT CONTAINS WILL NOT BE COPIED OR DISCLOSED TO OTHERS OR USED FOR ANY PURPOSE OTHER THAN CONDUCTING BUSINESS WITH COLFAX, AND WILL BE RETURNED AND ALL FURTHER USE DISCONTINUED UPON REQUEST BY COLFAX.</small>	<small>UNLESS OTHERWISE SPECIFIED DIMENSIONS ARE IN INCH TOLERANCES</small> .XX ± 0.01 .XXX ± 0.005 ANG ± 0.5	DRAWN LR	3.6.2003	 <b>ZENITH PUMPS</b> 5910 ELWIN BUCHANAN DRIVE SANFORD, NC 27330
		CHECKED		
MATERIAL  SEE BILL OF MATERIAL		PART WEIGHT =	LBS	H-9000 45 CC/REV RAN 600 SINGLE STREAM PUMP
		SURFACE AREA =	IN <sup>2</sup>	
		MODEL NUMBER =	119004506000	SCALE 3:4 SHEET 3 OF 3
		DRAWING =	119004506000	
		PRO/ENGINEER DRAWING	SIZE D	DRAWING NUMBER 11-90045-0600-0