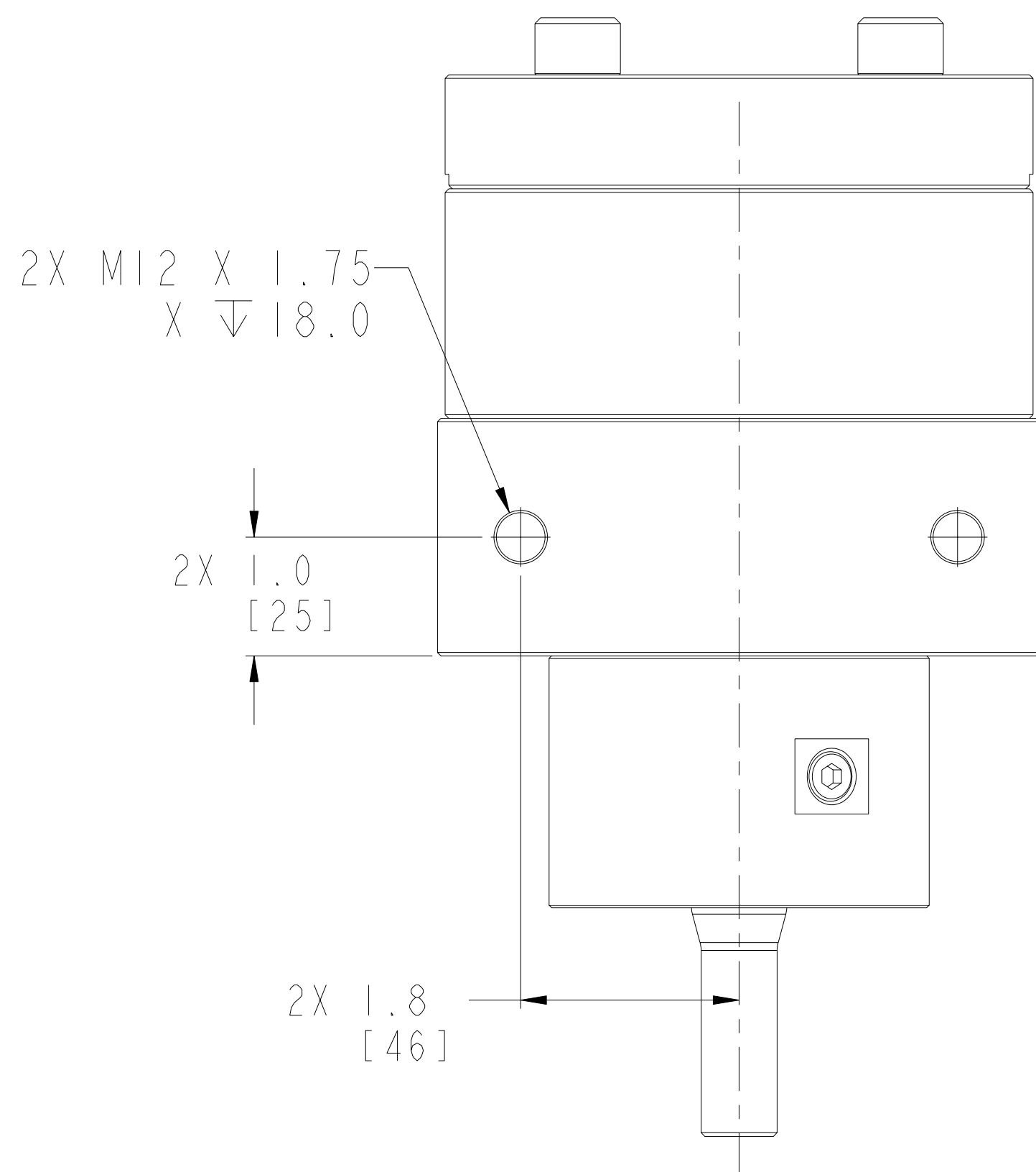
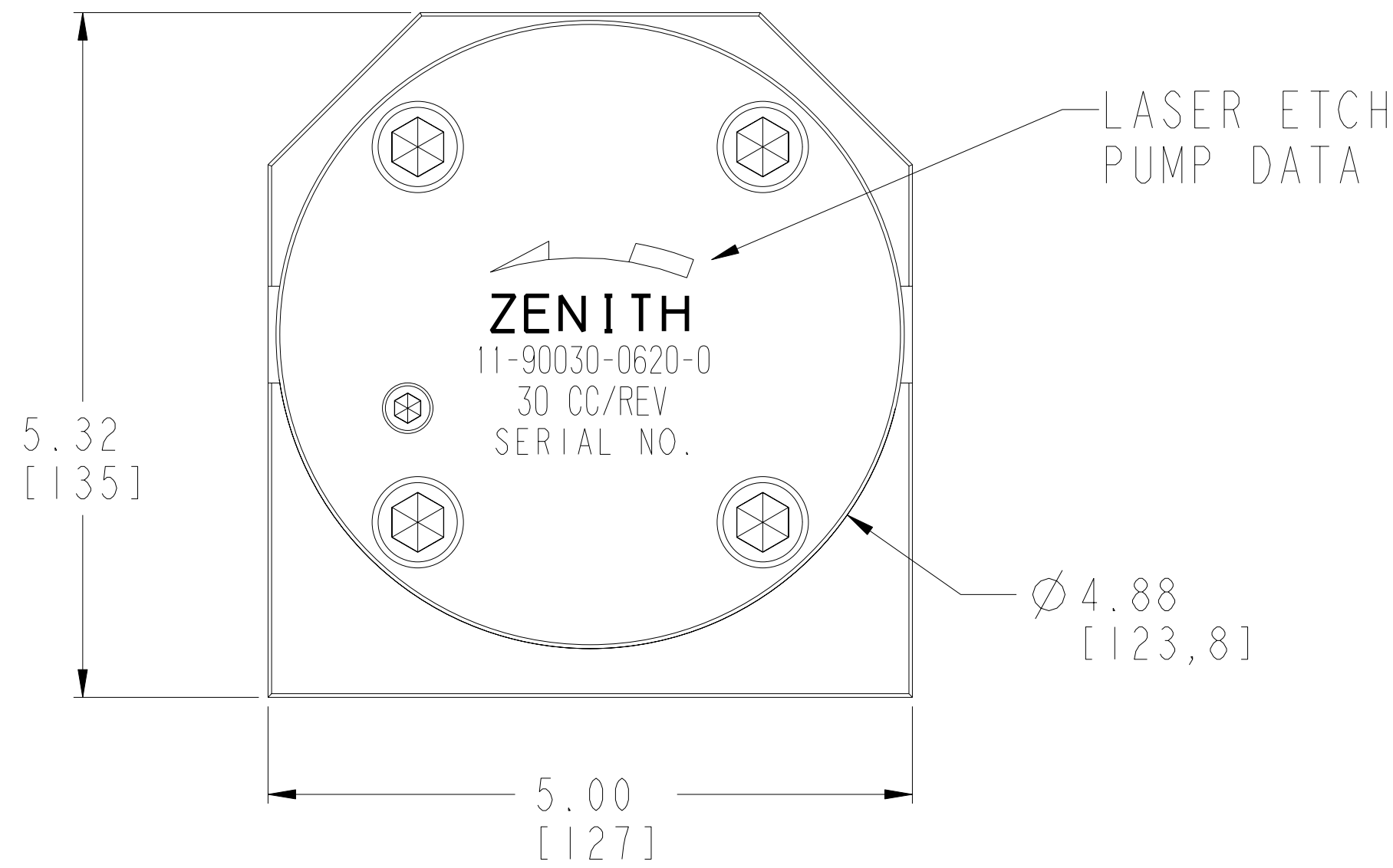


**TORQUE REQUIREMENTS**

**M12 BOLTS: LUBRICATED = 910 lb.-in.**  
**NON-LUBRICATED = 1190 il.in.**

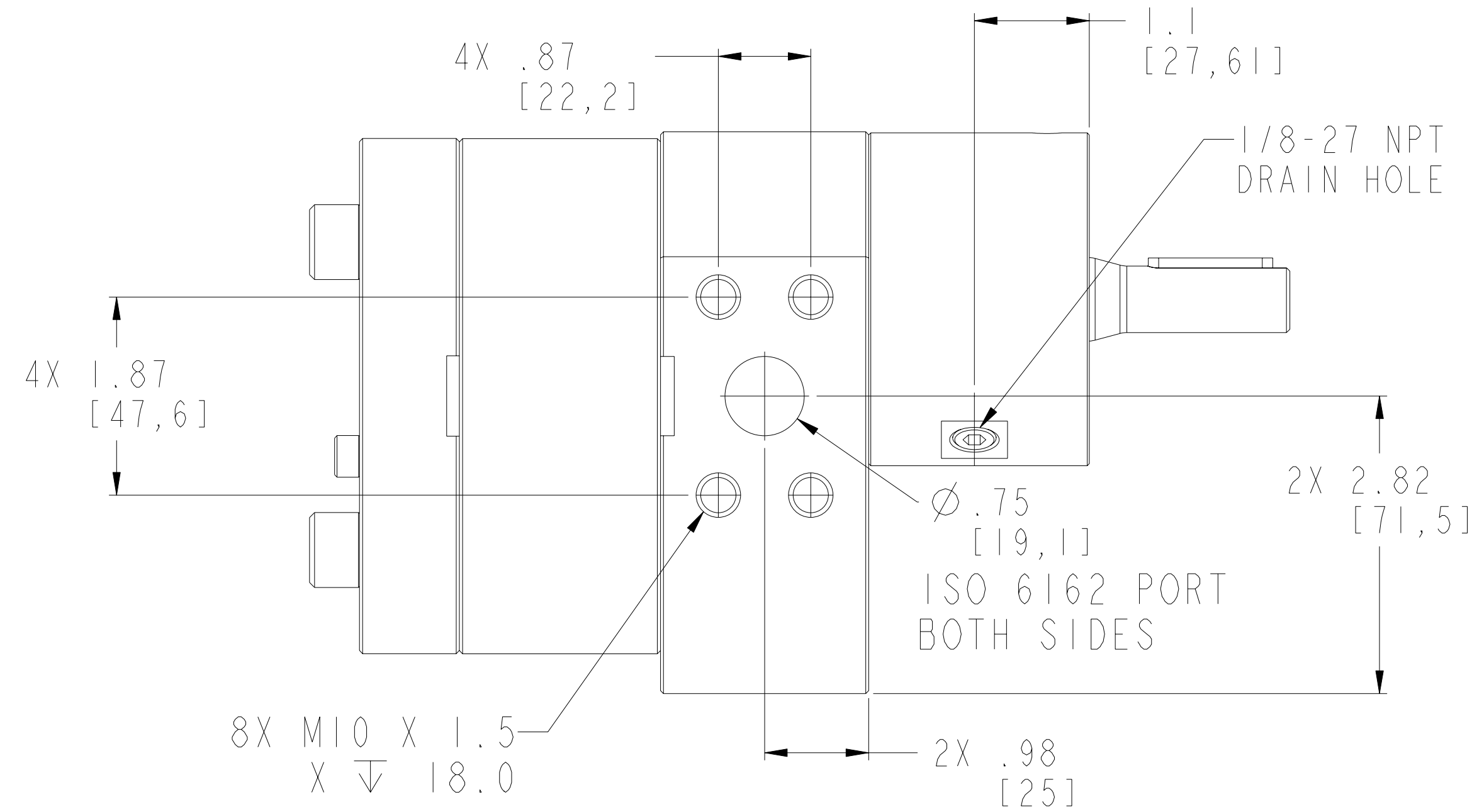
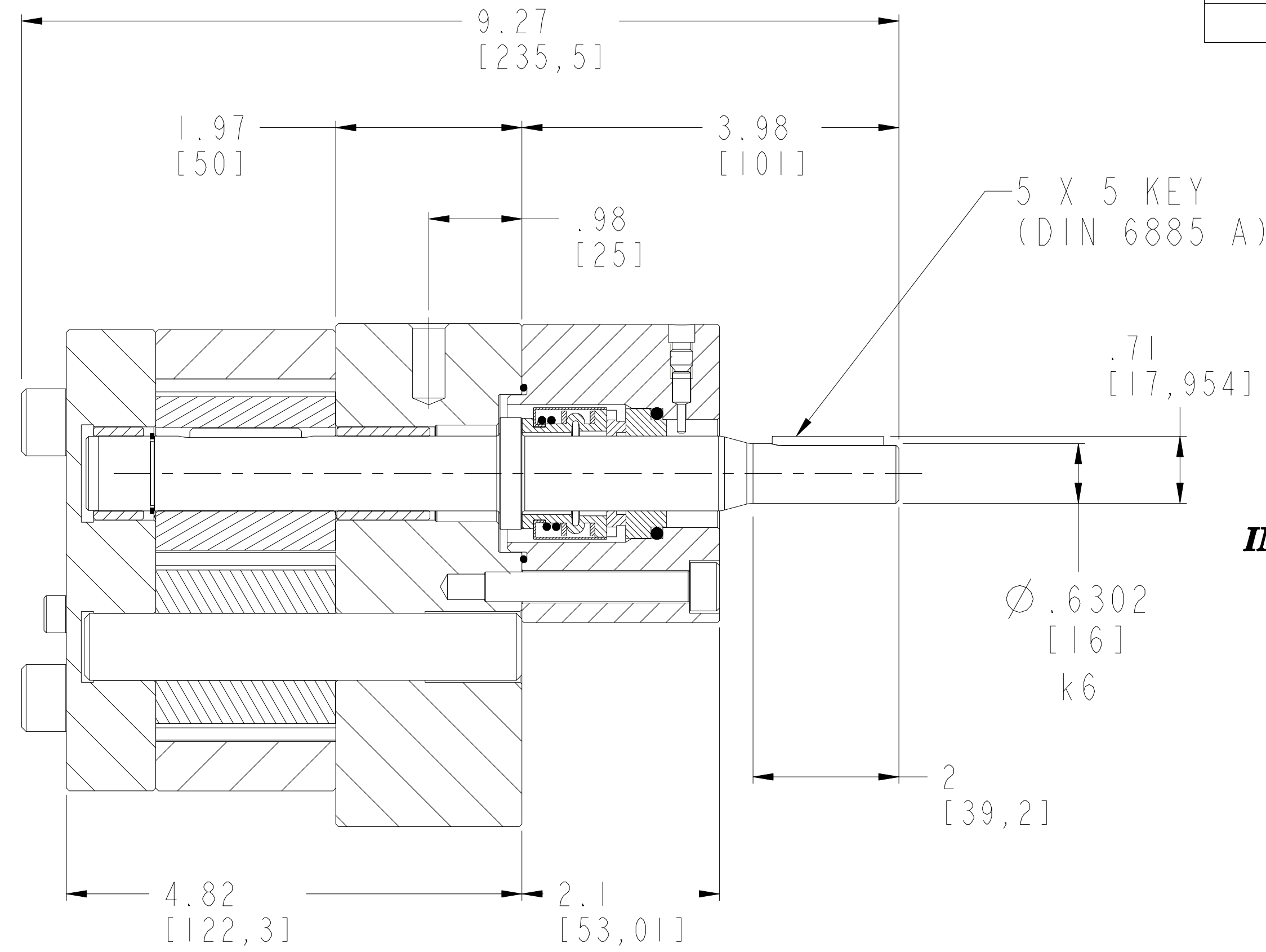
**M8 BOLTS: LUBRICATED = 262 lb.-in.**  
**NON-LUBRICATED = 345 lb.-in.**

**M6 BOLTS: LUBRICATED = 108 lb.-in.**  
**NON-LUBRICATED = 142 lb.-in.**

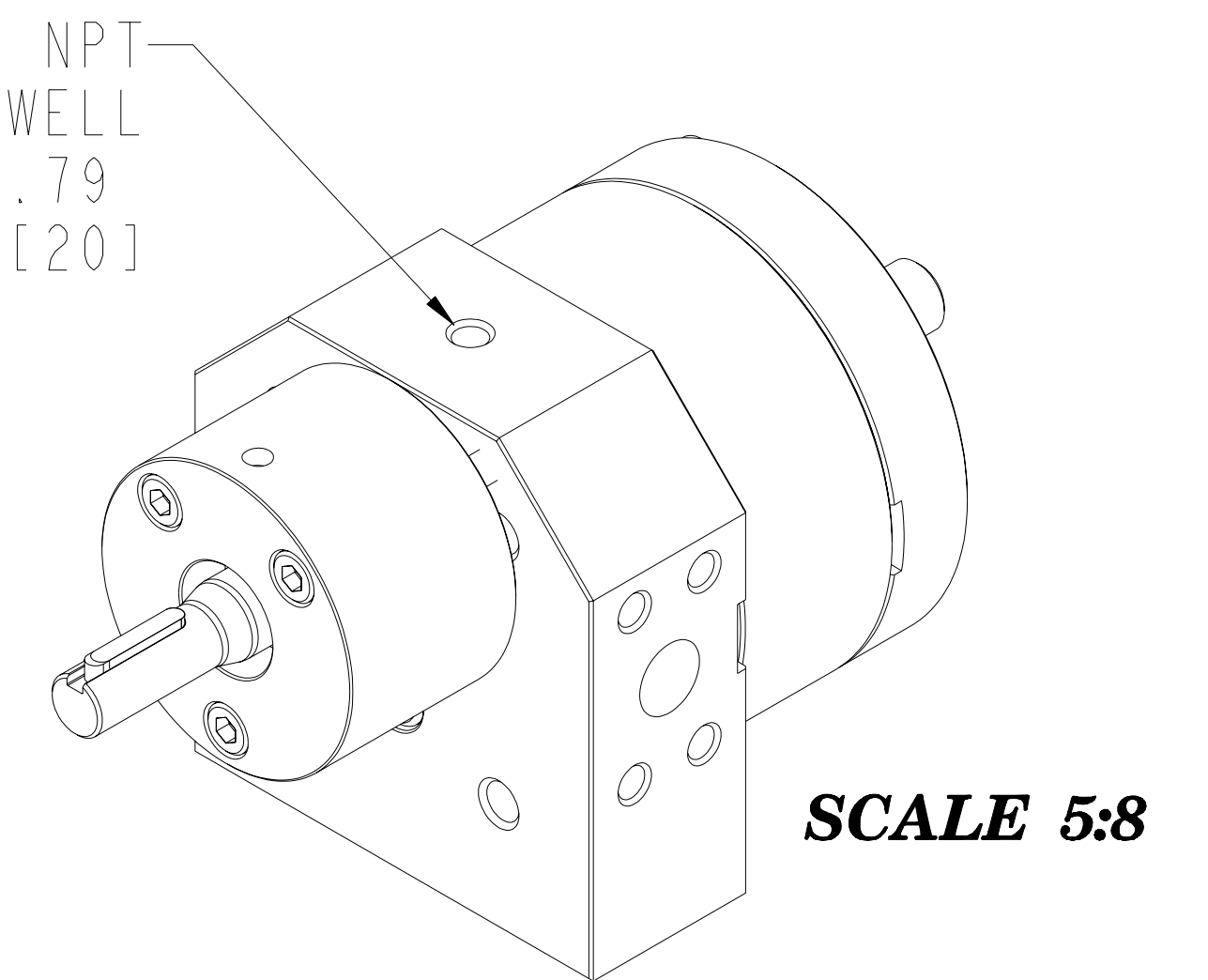
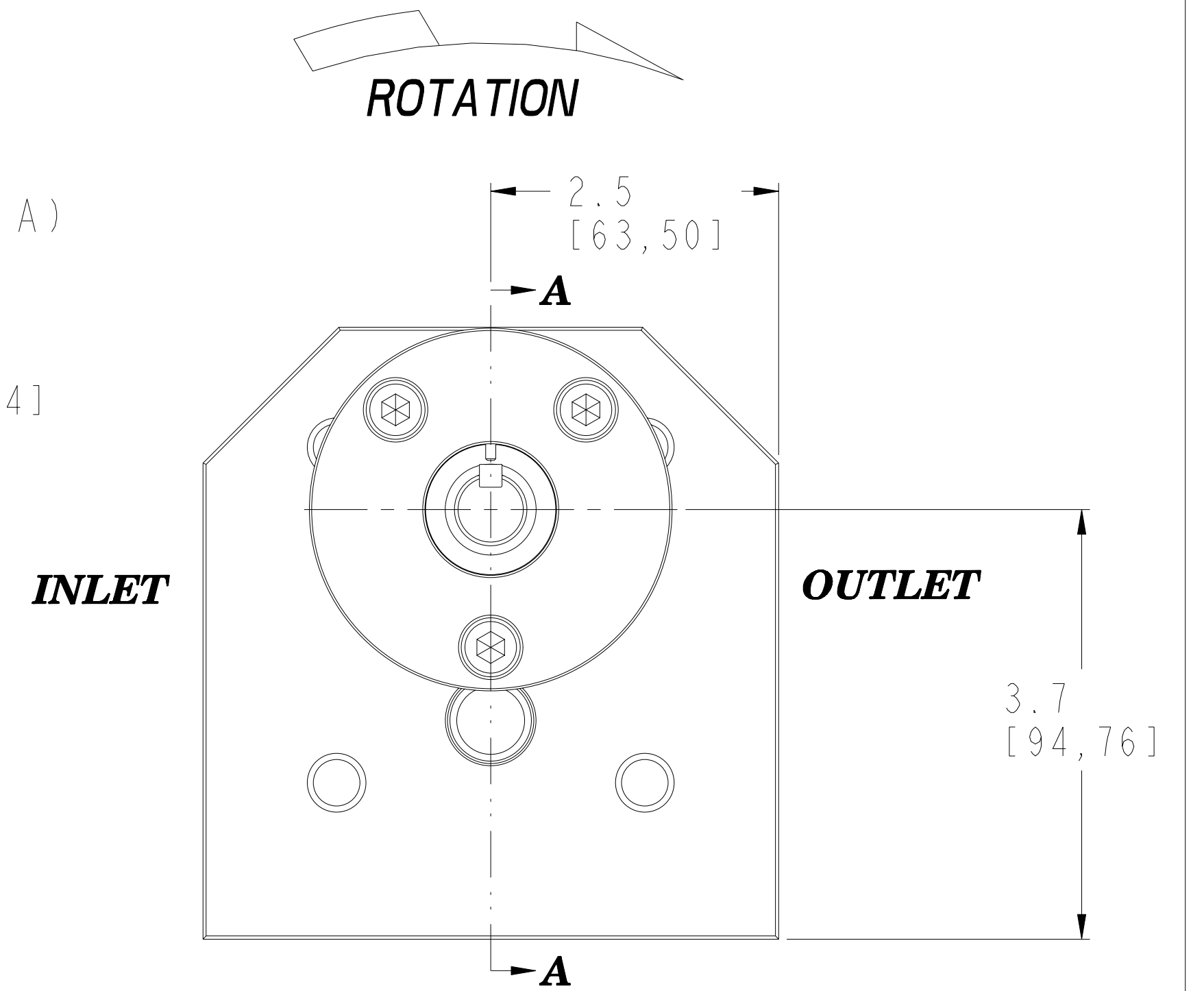


**BOTTOM VIEW**

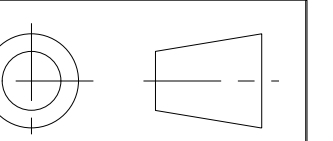
**SECTION A-A**



REVISIONS			
LTR	DESCRIPTION	DATE	ECN NO.
A	ADD 18-93000-0035-1	3/11/03	123-2003



INTERPRET PER ASME-Y14.5M 1994



THIS DOCUMENT CONTAINS INFORMATION THAT IS CONFIDENTIAL AND PROPRIETARY TO ZENITH PUMPS, COLFAX CORPORATION "COLFAX". THIS DOCUMENT IS FURNISHED ON THE UNDERSTANDING THAT THE DOCUMENT AND THE INFORMATION IT CONTAINS WILL NOT BE COPIED OR DISCLOSED TO OTHERS OR USED FOR ANY PURPOSE OTHER THAN CONDUCTING BUSINESS WITH COLFAX, AND WILL BE RETURNED AND ALL FURTHER USE DISCONTINUED UPON REQUEST BY COLFAX.

UNLESS OTHERWISE SPECIFIED DIMENSIONS ARE IN INCH TOLERANCES  
 .XX  $\pm 0.01$   
 .XXX  $\pm 0.005$   
 ANG  $\pm 0.5$

MATERIAL SEE BILL OF MATERIAL SHEET 2

DRAWN	MBR	12/23/02
CHECKED		
PART WEIGHT = LBS		
SURFACE AREA = IN <sup>2</sup>		
MODEL NUMBER =	119003006200	
DRAWING =	119003006200	
PRO/ENGINEER DRAWING	SIZE D	



**ZENITH PUMPS**  
 5910 ELWIN BUCHANAN DRIVE  
 SANFORD, NC 27330

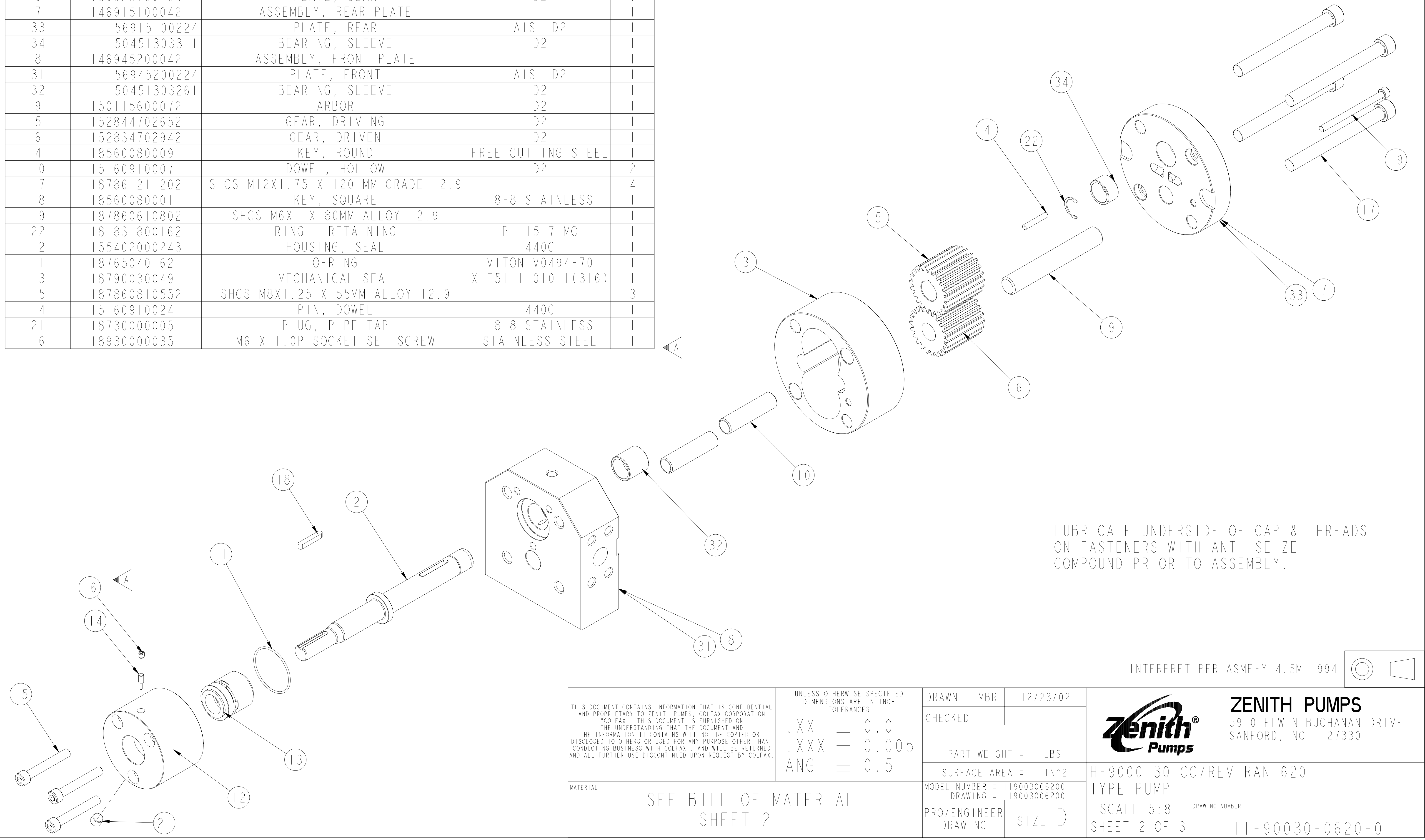
H-9000 30 CC/REV RAN 620  
 TYPE PUMP

SCALE 7:8  
 SHEET 1 OF 3

DRAWING NUMBER  
 11-90030-0620-0

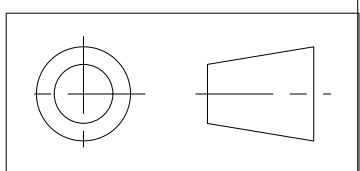
ITEM No.	PART NUMBER	PART NAME	MATERIAL	QTY
	119003006200	H-9000 30 CC/REV RAN 620		1
2	157956800252	SHAFT, DRIVE	AISI D2	1
3	156925100264	PLATE, GEAR	D2	1
7	146915100042	ASSEMBLY, REAR PLATE		1
33	156915100224	PLATE, REAR	AISI D2	1
34	150451303311	BEARING, SLEEVE	D2	1
8	146945200042	ASSEMBLY, FRONT PLATE		1
31	156945200224	PLATE, FRONT	AISI D2	1
32	150451303261	BEARING, SLEEVE	D2	1
9	150115600072	ARBOR	D2	1
5	152844702652	GEAR, DRIVING	D2	1
6	152834702942	GEAR, DRIVEN	D2	1
4	185600800091	KEY, ROUND	FREE CUTTING STEEL	1
10	151609100071	DOWEL, HOLLOW	D2	2
17	187861211202	SHCS M12X1.75 X 120 MM GRADE 12.9		4
18	185600800011	KEY, SQUARE	18-8 STAINLESS	1
19	187860610802	SHCS M6X1 X 80MM ALLOY 12.9		1
22	181831800162	RING - RETAINING	PH 15-7 MO	1
12	155402000243	HOUSING, SEAL	440C	1
11	187650401621	O-RING	VITON V0494-70	1
13	187900300491	MECHANICAL SEAL	X-F51-1-010-1(316)	1
15	187860810552	SHCS M8X1.25 X 55MM ALLOY 12.9		3
14	151609100241	PIN, DOWEL	440C	1
21	187300000051	PLUG, PIPE TAP	18-8 STAINLESS	1
16	189300000351	M6 X 1.0P SOCKET SET SCREW	STAINLESS STEEL	1

REVISIONS			
LTR	DESCRIPTION	DATE	ECN NO.
A	ADD 18-93000-0035-1	3/11/03	123-2003



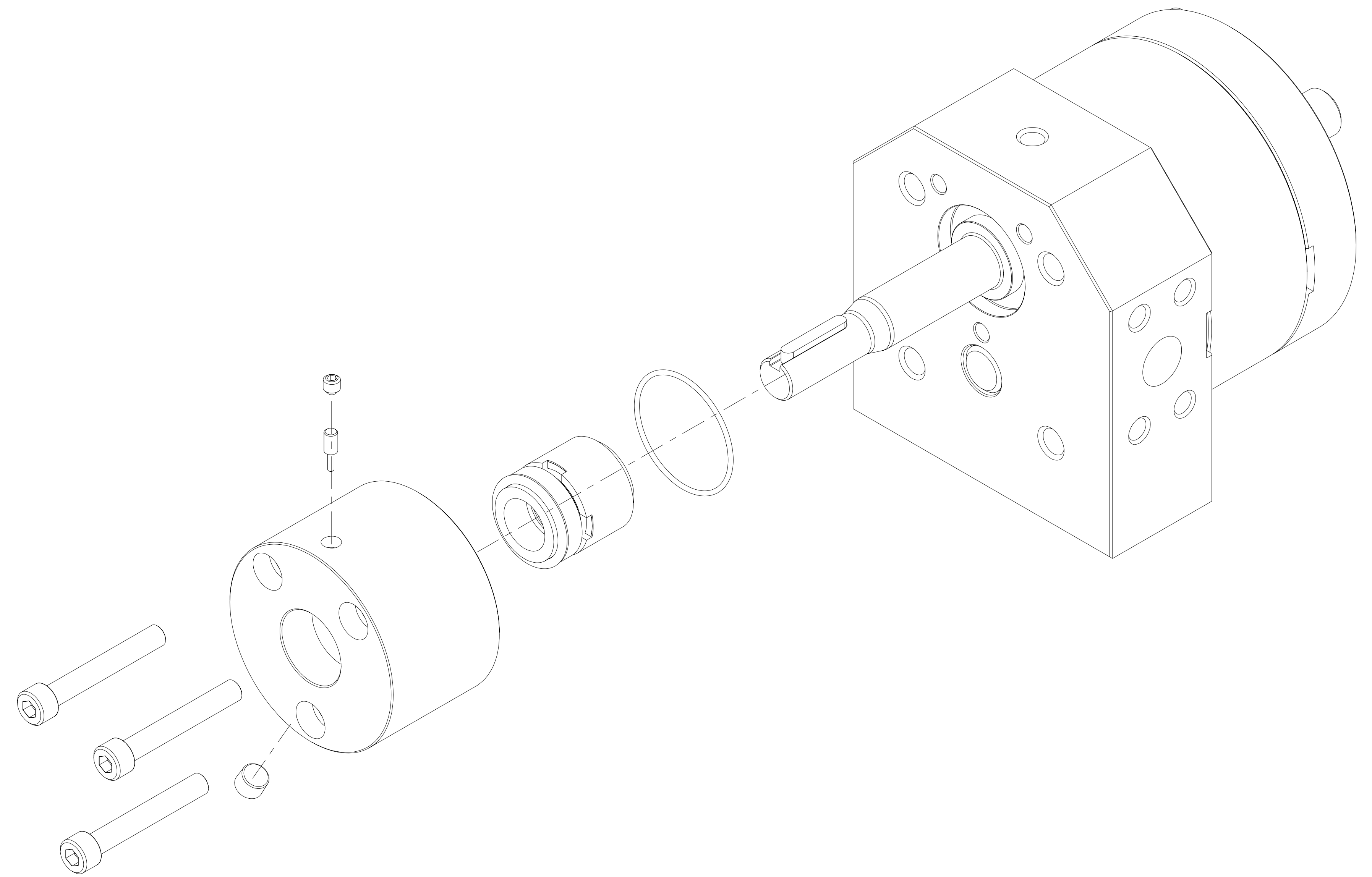
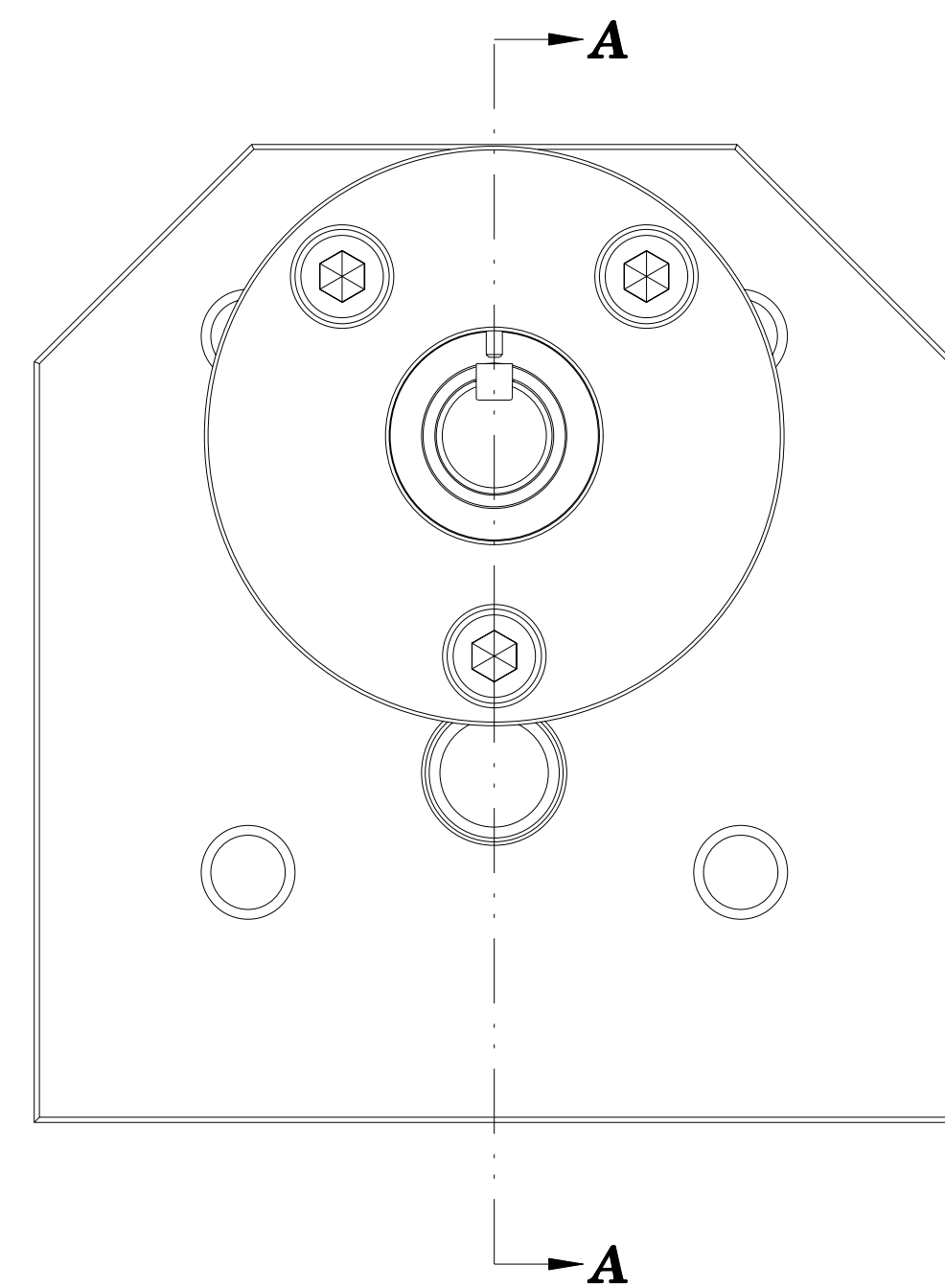
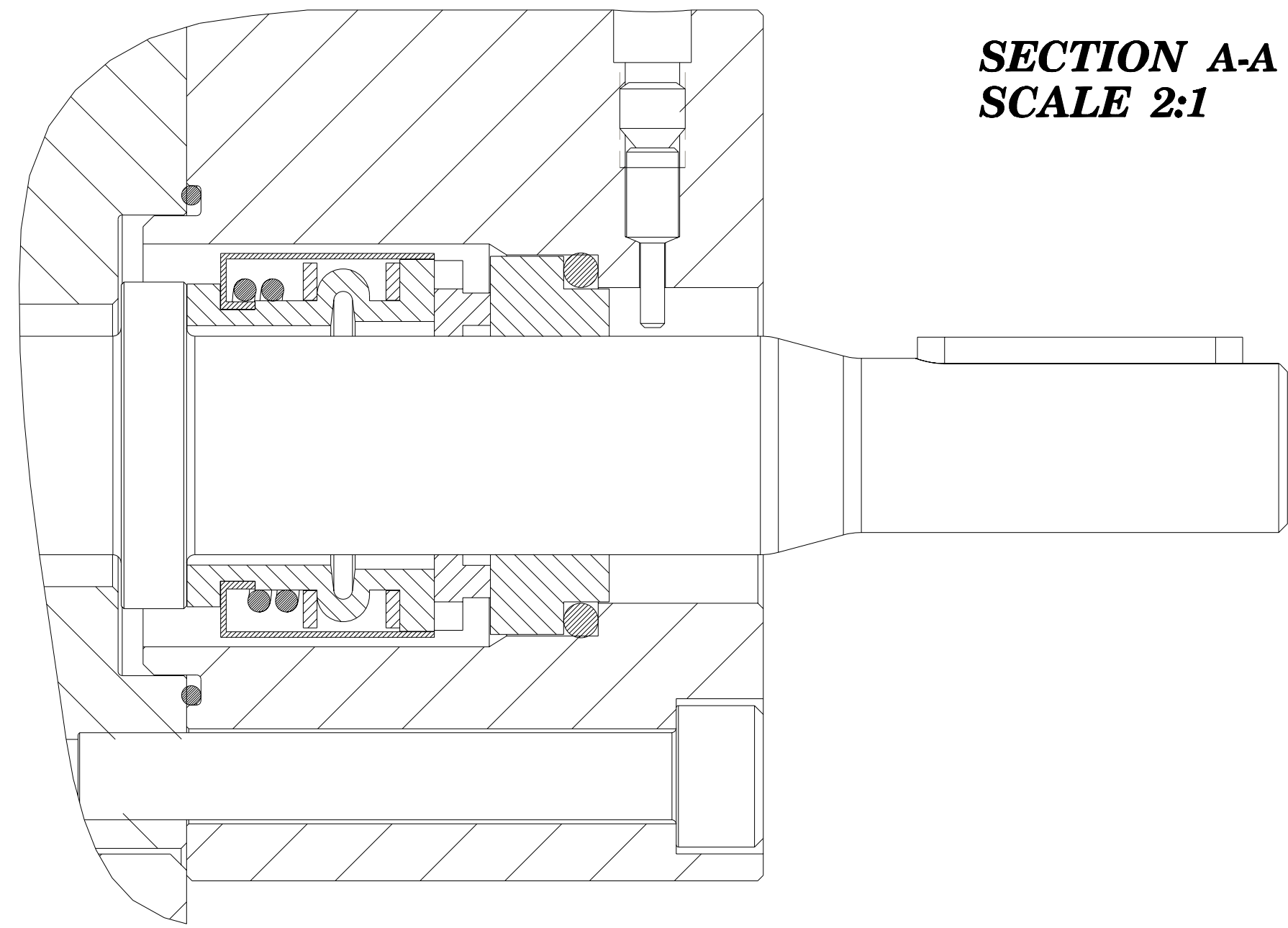
LUBRICATE UNDERSIDE OF CAP & THREADS ON FASTENERS WITH ANTI-SEIZE COMPOUND PRIOR TO ASSEMBLY.

INTERPRET PER ASME-Y14.5M 1994

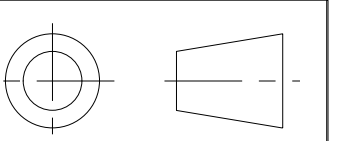



THIS DOCUMENT CONTAINS INFORMATION THAT IS CONFIDENTIAL AND PROPRIETARY TO ZENITH PUMPS, COLFAX CORPORATION "COLFAX". THIS DOCUMENT IS FURNISHED ON THE UNDERSTANDING THAT THE DOCUMENT AND THE INFORMATION IT CONTAINS WILL NOT BE COPIED OR DISCLOSED TO OTHERS OR USED FOR ANY PURPOSE OTHER THAN CONDUCTING BUSINESS WITH COLFAX, AND WILL BE RETURNED AND ALL FURTHER USE DISCONTINUED UPON REQUEST BY COLFAX.	UNLESS OTHERWISE SPECIFIED DIMENSIONS ARE IN INCH TOLERANCES .XX ± 0.01 .XXX ± 0.005 ANG ± 0.5	DRAWN MBR 12/23/02 CHECKED	<b>ZENITH PUMPS</b> 5910 ELWIN BUCHANAN DRIVE SANFORD, NC 27330
	MATERIAL SEE BILL OF MATERIAL SHEET 2	PART WEIGHT = LBS SURFACE AREA = IN <sup>2</sup> MODEL NUMBER = 119003006200 DRAWING = 119003006200	
		PRO/ENGINEER DRAWING SIZE D	DRAWING NUMBER 11-90030-0620-0

REVISIONS			
LTR	DESCRIPTION	DATE	ECN NO.
A	ADD 18-93000-0035-1	3/11/03	123-2003



INTERPRET PER ASME-Y14.5M 1994



THIS DOCUMENT CONTAINS INFORMATION THAT IS CONFIDENTIAL AND PROPRIETARY TO ZENITH PUMPS, COLFAX CORPORATION "COLFAX". THIS DOCUMENT IS FURNISHED ON THE UNDERSTANDING THAT THE DOCUMENT AND THE INFORMATION IT CONTAINS WILL NOT BE COPIED OR DISCLOSED TO OTHERS OR USED FOR ANY PURPOSE OTHER THAN CONDUCTING BUSINESS WITH COLFAX, AND WILL BE RETURNED AND ALL FURTHER USE DISCONTINUED UPON REQUEST BY COLFAX.	UNLESS OTHERWISE SPECIFIED DIMENSIONS ARE IN INCH TOLERANCES .XX ± 0.01 .XXX ± 0.005 ANG ± 0.5	DRAWN MBR 12/23/02	 <b>ZENITH PUMPS</b> 5910 ELWIN BUCHANAN DRIVE SANFORD, NC 27330
		CHECKED	
MATERIAL SEE BILL OF MATERIAL SHEET 2		PART WEIGHT = LBS	H-9000 30 CC/REV RAN 620 TYPE PUMP
		SURFACE AREA = IN <sup>2</sup>	
		MODEL NUMBER = 119003006200 DRAWING = 119003006200	
PRO/ENGINEER DRAWING	SIZE D	SCALE 1:1 SHEET 3 OF 3	DRAWING NUMBER 11-90030-0620-0