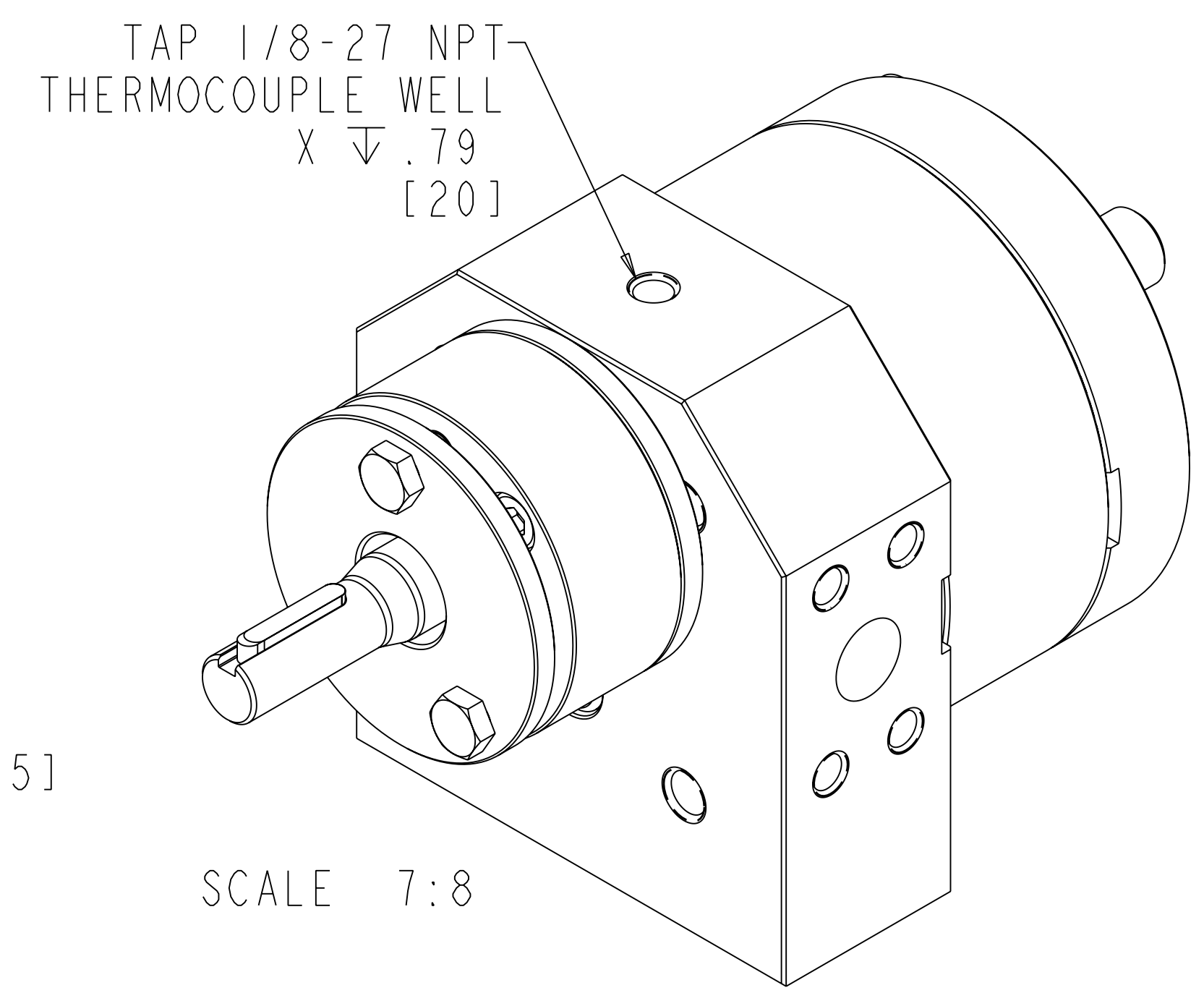
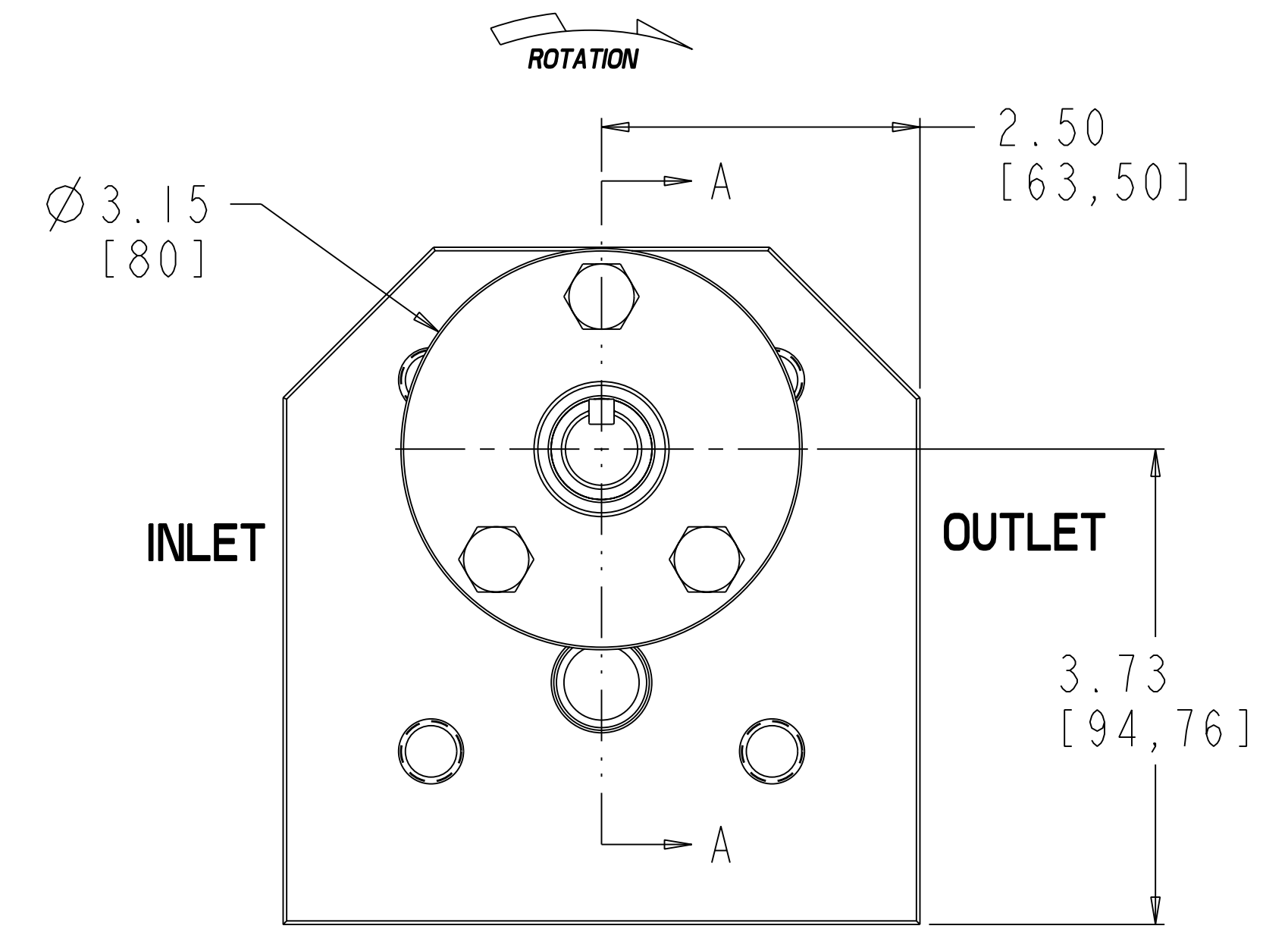
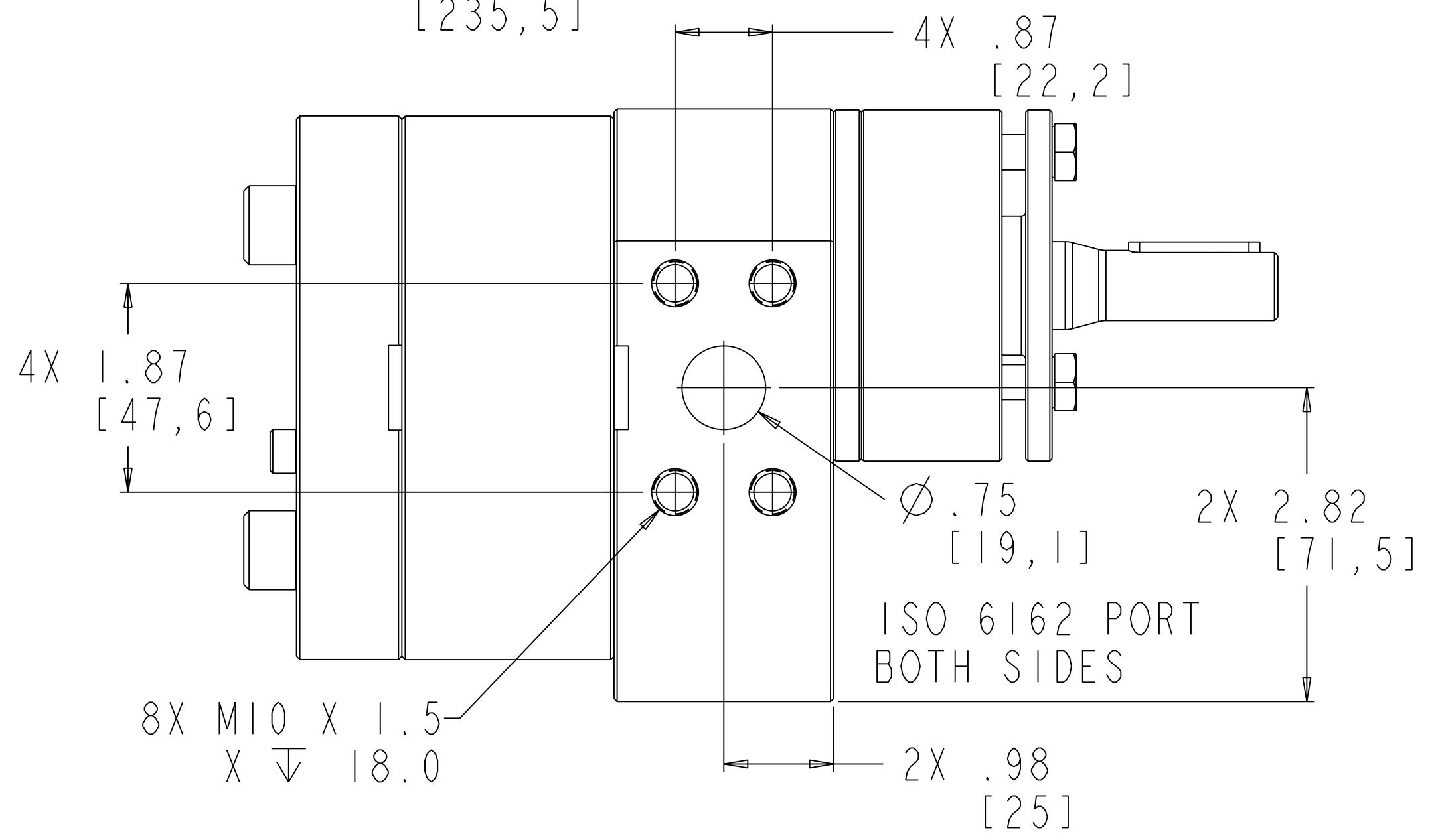
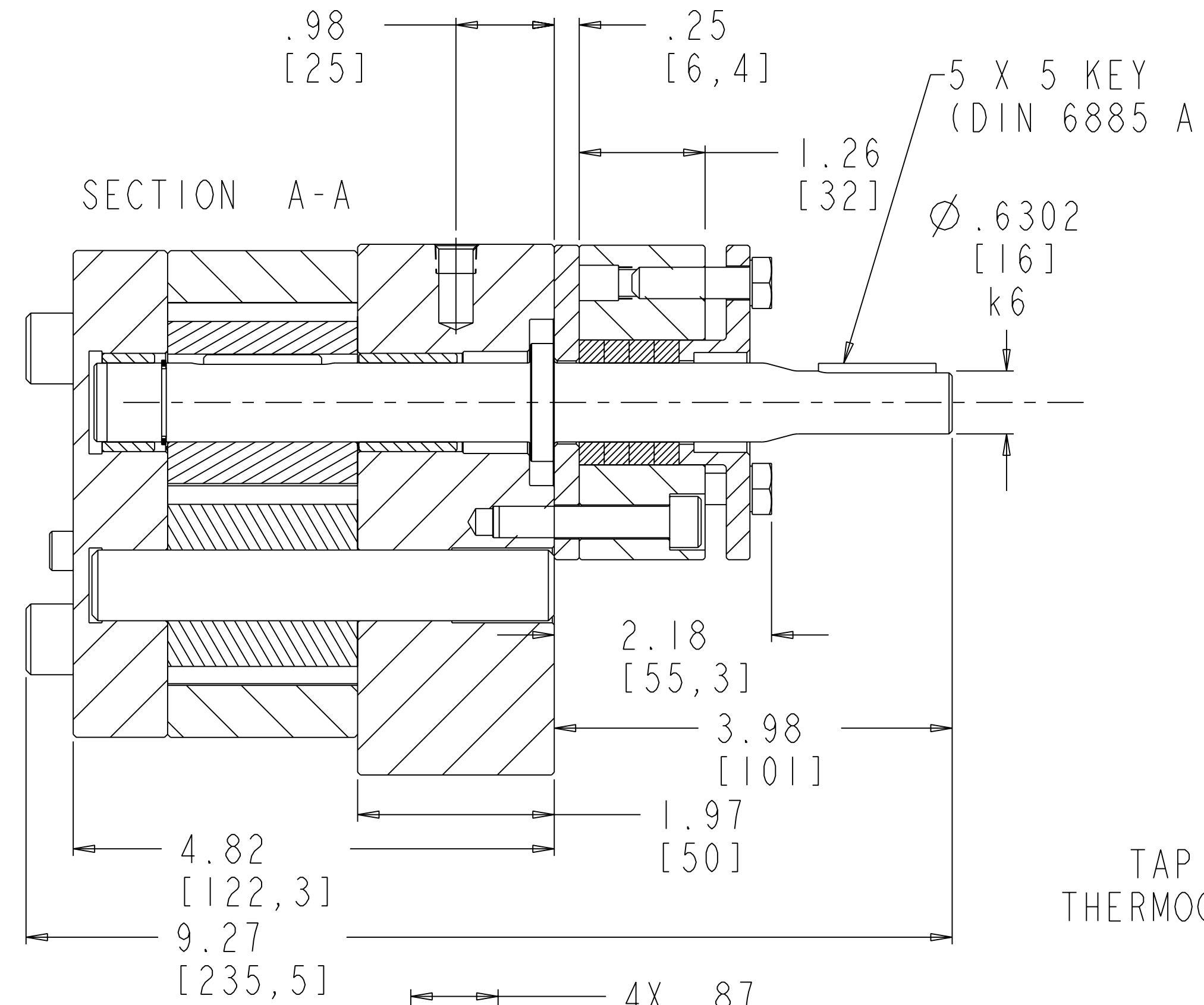
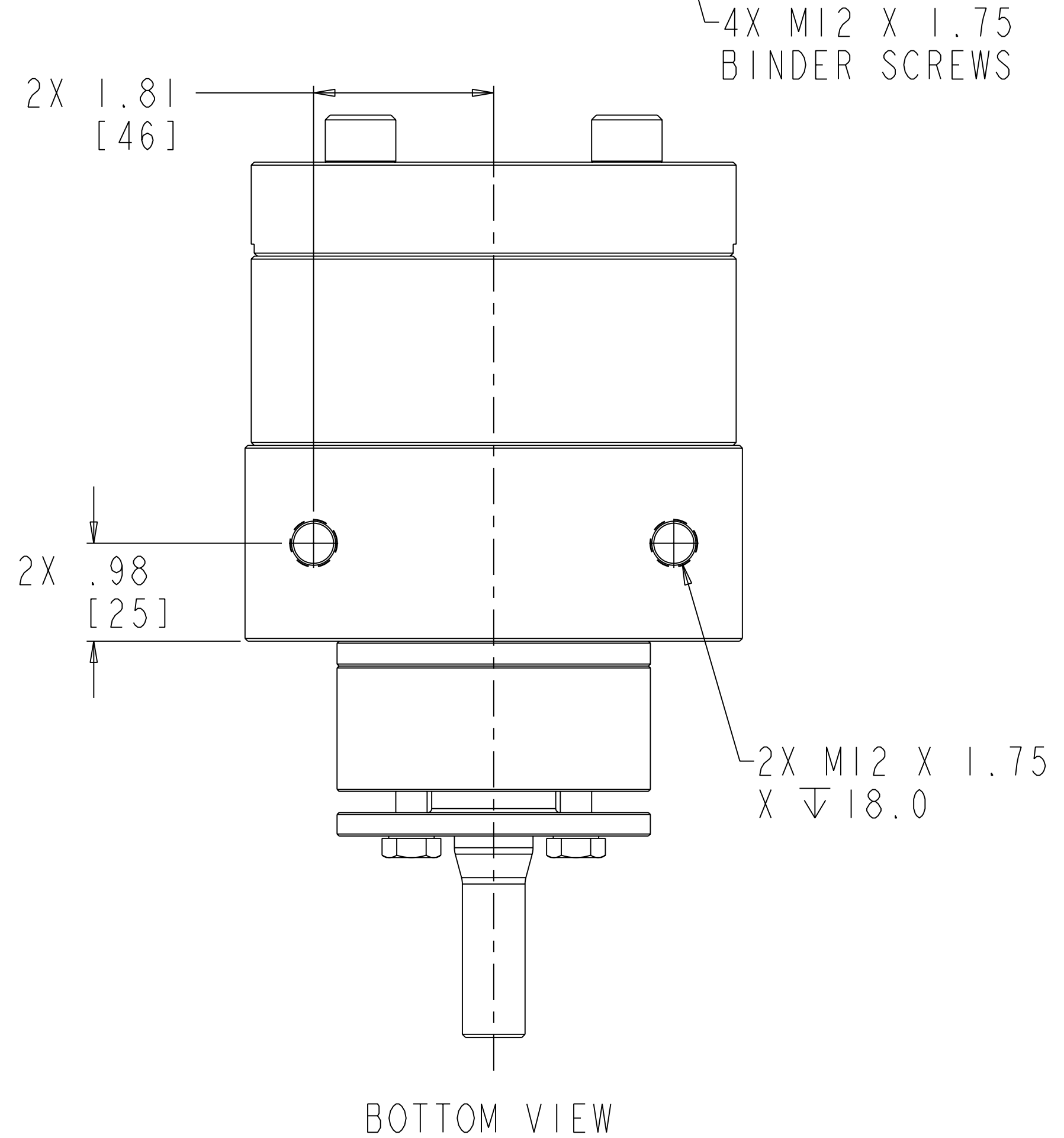
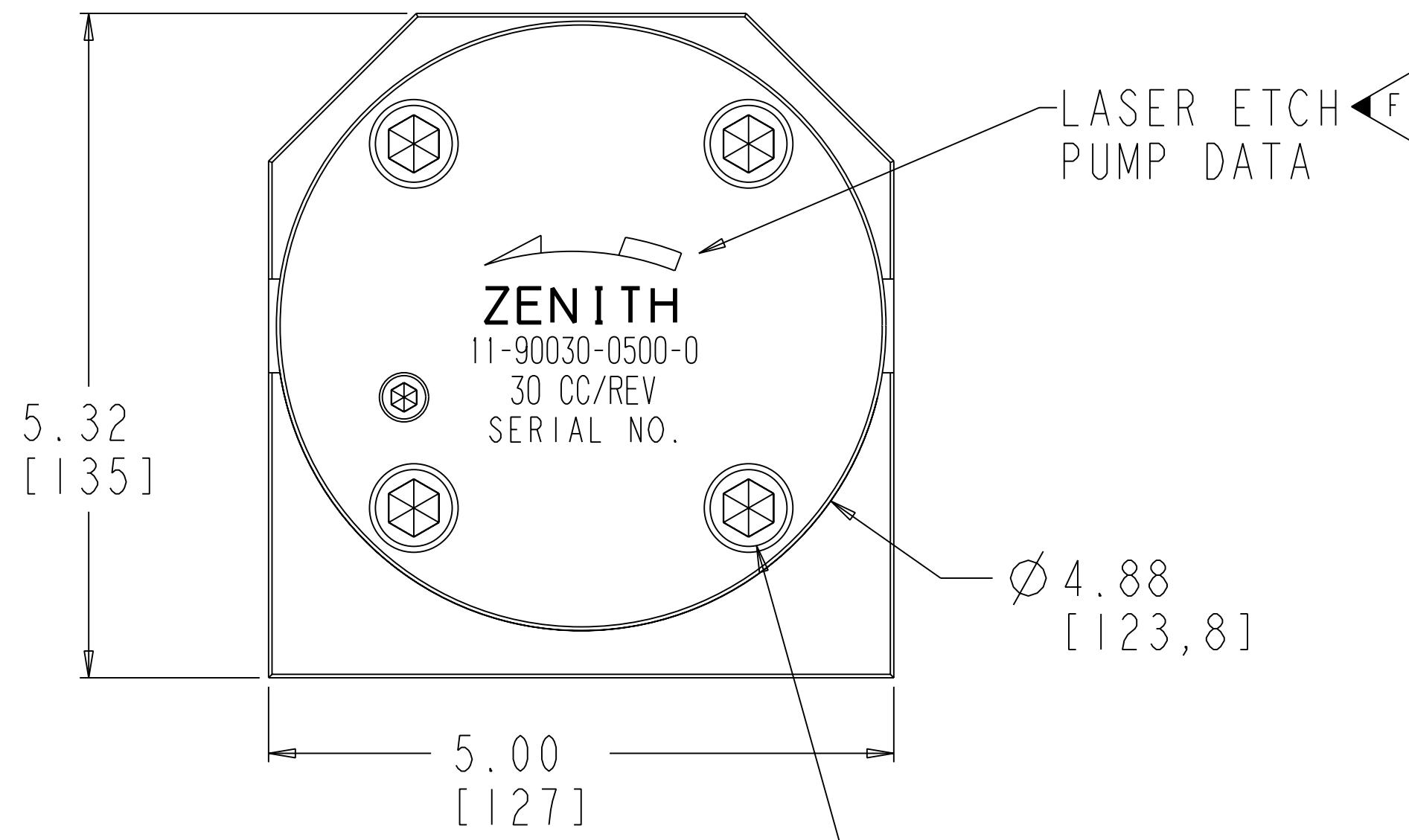


NOTES:

1. TIGHTEN 12MM BINDER BOLTS TO:
1200in-lb NON-LUBRICATED; 803in-lb LUBRICATED
2. TIGHTEN PACKING HOUSING BOLTS TO:
350in-lb NON-LUBRICATED; 232in-lb LUBRICATED
3. KEEP 8MM HEX HEAD BOLTS LOOSE DURING SHIPPING
4. ONCE INSTALLED TIGHTEN HEX HEAD BOLTS UNTIL
LEAKAGE IS CONTROLLED

REVISIONS			
LTR	DESCRIPTION	DATE	APPROVED
F	UPDATED SERIES 9000 PUMP DATA	05-22-98	620-97
G	ADDED 18-18318-001-2 AND SHEET 3	7.27.99	250-99



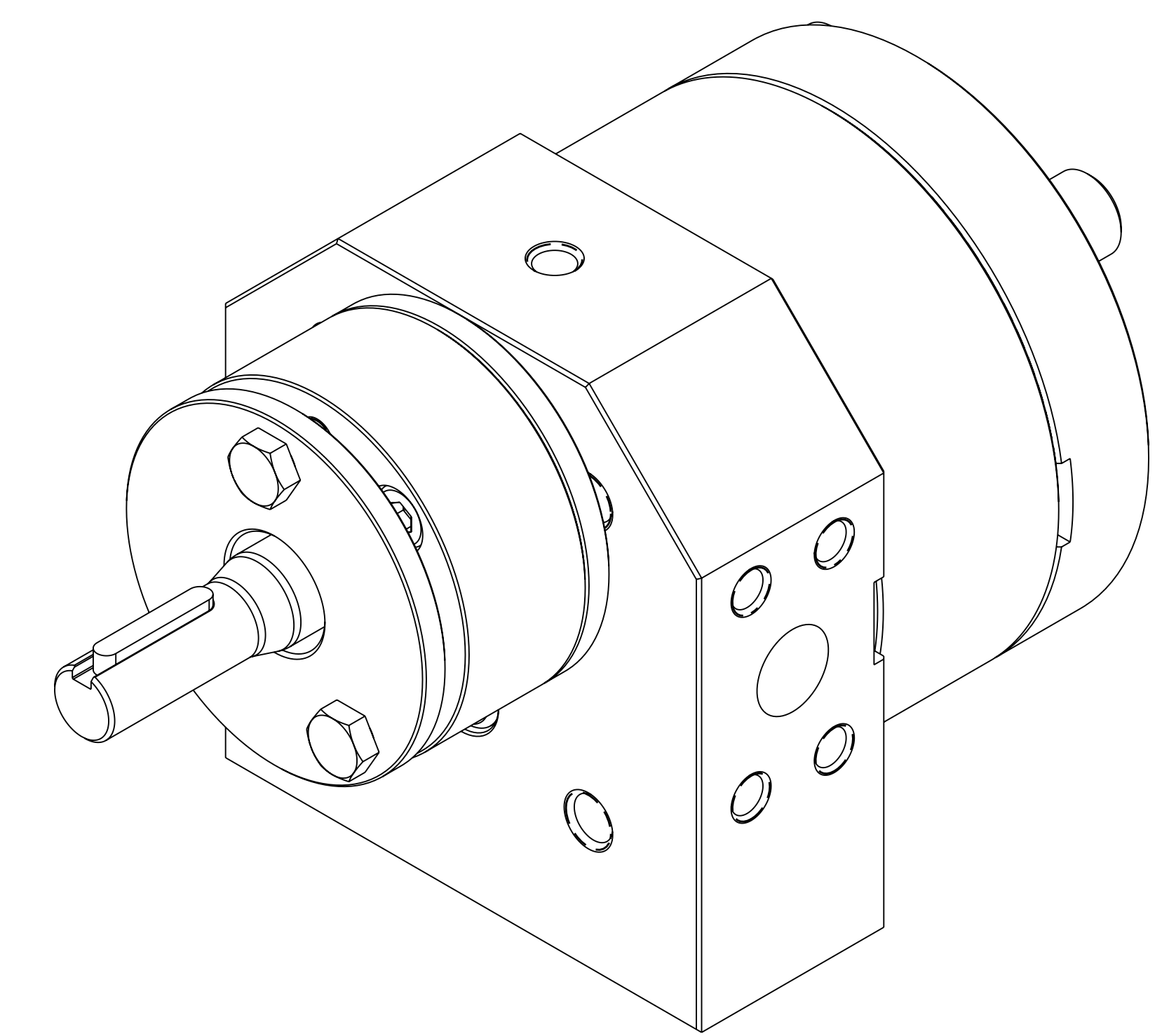
INTERPRET PER ASME-Y14.5M 1994

DESIGN, SPECIFICATIONS, AND DETAILS CONTAINED ON OR REFERENCED TO ON THIS DRAWING ARE PROPRIETARY TO THE ZENITH DIVISION, PARKER HANNIFIN CORPORATION AND MAY NOT BE REPRODUCED, MANUFACTURED, OR OTHERWISE USED WITHOUT THE WRITTEN CONSENT OF THE ZENITH DIVISION, PARKER HANNIFIN CORPORATION	UNLESS OTHERWISE SPECIFIED DIMENSIONS ARE IN INCH TOLERANCES .XX ± 0.01 .XXX ± 0.005 ANG ± 0.5	DRAWN MJW 06-19-95	ZENITH PUMPS DIVISION 59 HANAN DRIVE, SANFORD, NC 27330 PARKER HANNIFIN CORPORATION	
		CHECKED		PART WEIGHT = LBS
		MODEL NUMBER = 119003005000 DRAWING = 119003005000		SURFACE AREA = IN ²
		PRO/ENGINEER DRAWING		SIZE D
MATERIAL SEE BILL OF MATERIAL SHEET 2 OF 3		H-9000 TYPE PUMP 30 CC/REV	SCALE 7:8 SHEET 1 OF 3	
		DRAWING NUMBER 11-90030-0500-0		

ITEM No.	PART NUMBER	PART NAME	MATERIAL	QTY
	119003005000	H-9000 TYPE PUMP		1
2	157956800252	SHAFT, DRIVE	AISI D2	1
3	156925100264	PLATE, GEAR	D2	1
7	146915100042	ASSEMBLY, REAR PLATE		1
33	156915100224	PLATE, REAR	AISI D2	1
34	150451303311	BEARING, SLEEVE	D2	1
8	146945200042	ASSEMBLY, FRONT PLATE		1
31	156945200224	PLATE, FRONT	AISI D2	1
32	150451303261	BEARING, SLEEVE	D2	1
9	150115600072	ARBOR	D2	1
5	152844702652	GEAR, DRIVING	D2	1
6	152834702942	GEAR, DRIVEN	D2	1
4	185600800091	KEY, ROUND	FREE CUTTING STEEL	1
10	151609100071	DOWEL, HOLLOW	D2	2
17	187861211202	SHCS M12X1.75 X 120 MM GRADE 12.9		4
18	185600800011	KEY, SQUARE	18-8 STAINLESS	1
11	156371000083	PLATE, COLLAR	D2	1
12	155400601803	HOUSING, PACKING	AISI 4140	1
13	187900101801	SEAL, PACKING	GRAFOIL	4
14	155100102063	GLAND, PACKING	AISI 4140	1
15	187860810452	SHCS M8X1.25 X 45MM ALLOY 12.9		3
16	187890810302	HHCS M8X1.25 X 30MM ALLOY GRADE 8.8		3
19	187860610802	SHCS M6X1 X 80MM ALLOY 12.9		1
22	181831800162	RING - RETAINING	PH 15-7 MO	1



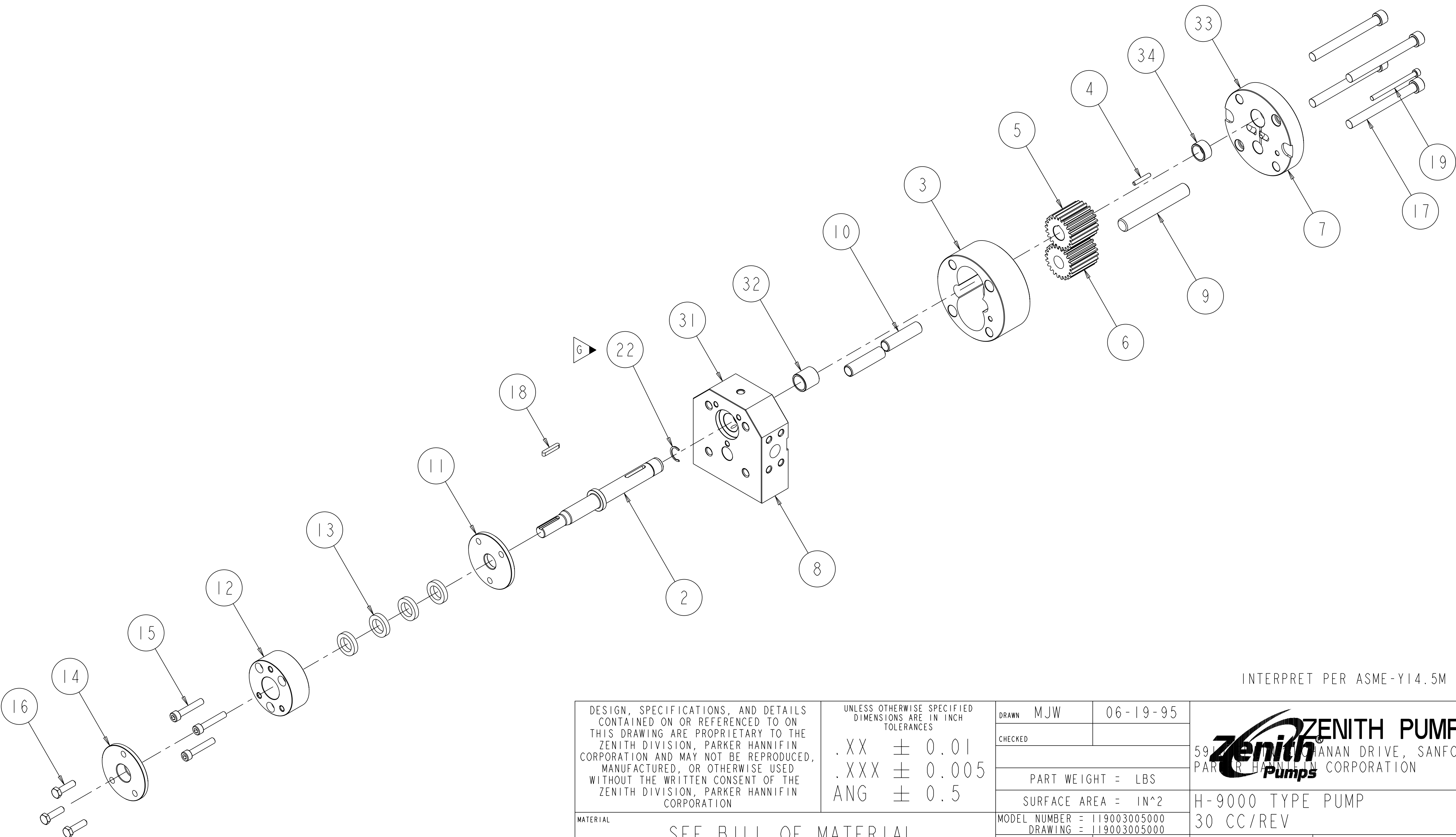
REVISIONS			
LTR	DESCRIPTION	DATE	APPROVED
F	UPDATED SERIES 9000 PUMP DATA	05-22-98	620-97
G	ADDED 18-18318-0016-2 AND SHEET 3	7.27.99	250-99



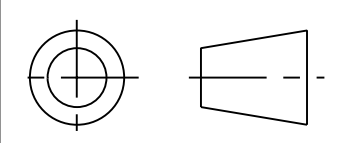
INTERPRET PER ASME-Y14.5M 1994

DESIGN, SPECIFICATIONS, AND DETAILS CONTAINED ON OR REFERENCED TO ON THIS DRAWING ARE PROPRIETARY TO THE ZENITH DIVISION, PARKER HANNIFIN CORPORATION AND MAY NOT BE REPRODUCED, MANUFACTURED, OR OTHERWISE USED WITHOUT THE WRITTEN CONSENT OF THE ZENITH DIVISION, PARKER HANNIFIN CORPORATION	UNLESS OTHERWISE SPECIFIED DIMENSIONS ARE IN INCH TOLERANCES .XX ± 0.01 .XXX ± 0.005 ANG ± 0.5	DRAWN MJW 06-19-95	ZENITH PUMPS DIVISION 5910 HANAN DRIVE, SANFORD, NC 27330 PARKER HANNIFIN CORPORATION
		CHECKED	
		PART WEIGHT = LBS SURFACE AREA = IN ²	
		MODEL NUMBER = 119003005000 DRAWING = 119003005000	
MATERIAL SEE BILL OF MATERIAL SHEET 2 OF 3	PRO/ENGINEER DRAWING	SIZE D	H-9000 TYPE PUMP 30 CC/REV SCALE 1:1 SHEET 2 OF 3 DRAWING NUMBER 11-90030-0500-0

REVISIONS			
LTR	DESCRIPTION	DATE	APPROVED
G	ADDED 18-18318-0016-2 AND SHEET 3	7.27.99	250-99



INTERPRET PER ASME-Y14.5M 1994



DESIGN, SPECIFICATIONS, AND DETAILS CONTAINED ON OR REFERENCED TO ON THIS DRAWING ARE PROPRIETARY TO THE ZENITH DIVISION, PARKER HANNIFIN CORPORATION AND MAY NOT BE REPRODUCED, MANUFACTURED, OR OTHERWISE USED WITHOUT THE WRITTEN CONSENT OF THE ZENITH DIVISION, PARKER HANNIFIN CORPORATION

UNLESS OTHERWISE SPECIFIED DIMENSIONS ARE IN INCH TOLERANCES
 .XX ± 0.01
 .XXX ± 0.005
 ANG ± 0.5

MATERIAL
 SEE BILL OF MATERIAL SHEET 2 OF 3

DRAWN	MJW	06-19-95
CHECKED		
PART WEIGHT = LBS		
SURFACE AREA = IN ²		
PRO/ENGINEER DRAWING	SIZE D	

	ZENITH PUMPS DIVISION 5910 HANAN DRIVE, SANFORD, NC 27330 PARKER HANNIFIN CORPORATION	
	H-9000 TYPE PUMP 30 CC/REV	
MODEL NUMBER = 119003005000 DRAWING = 119003005000	SCALE 3:8 SHEET 3 OF 3	DRAWING NUMBER 11-90030-0500-0