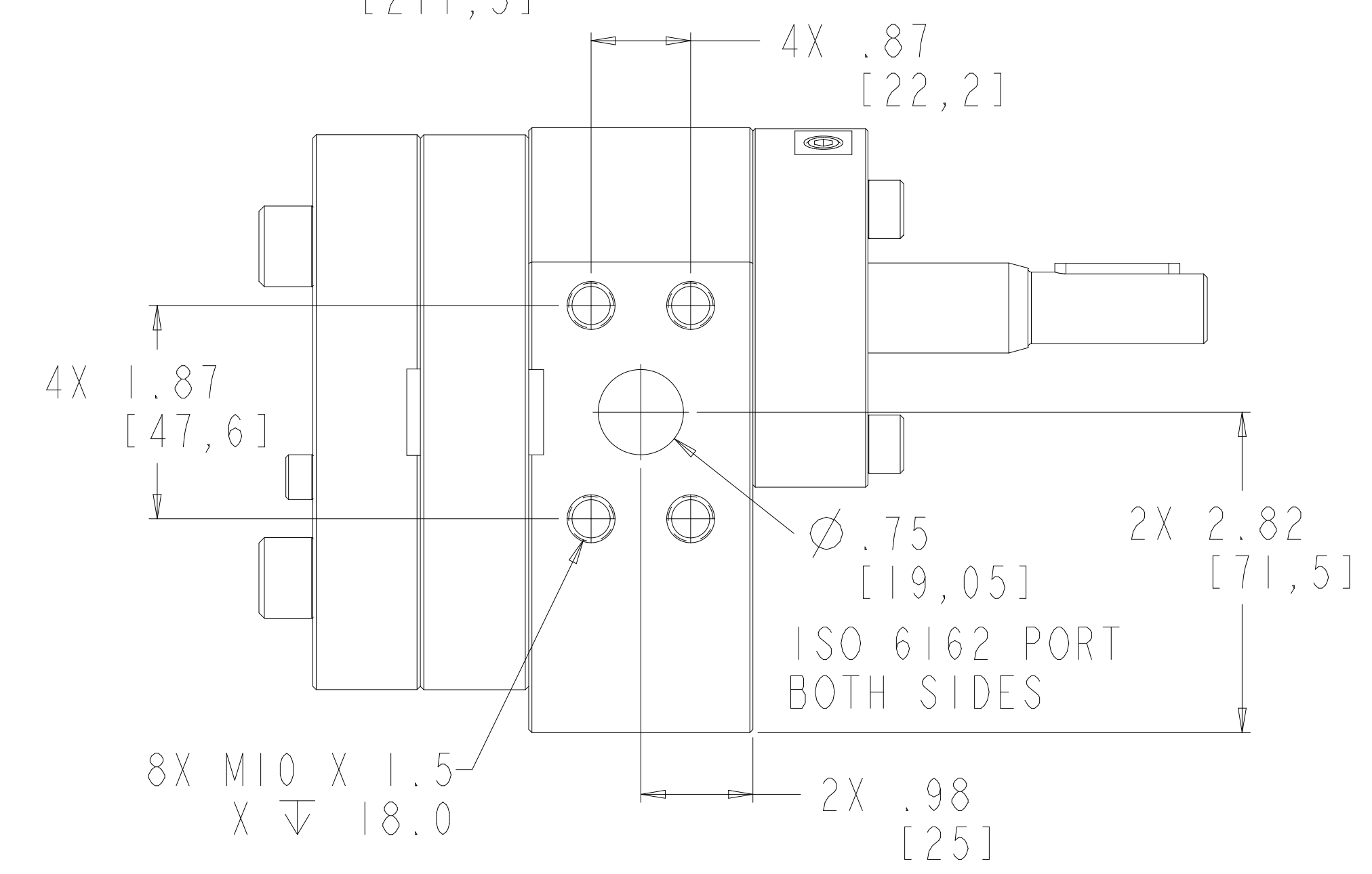
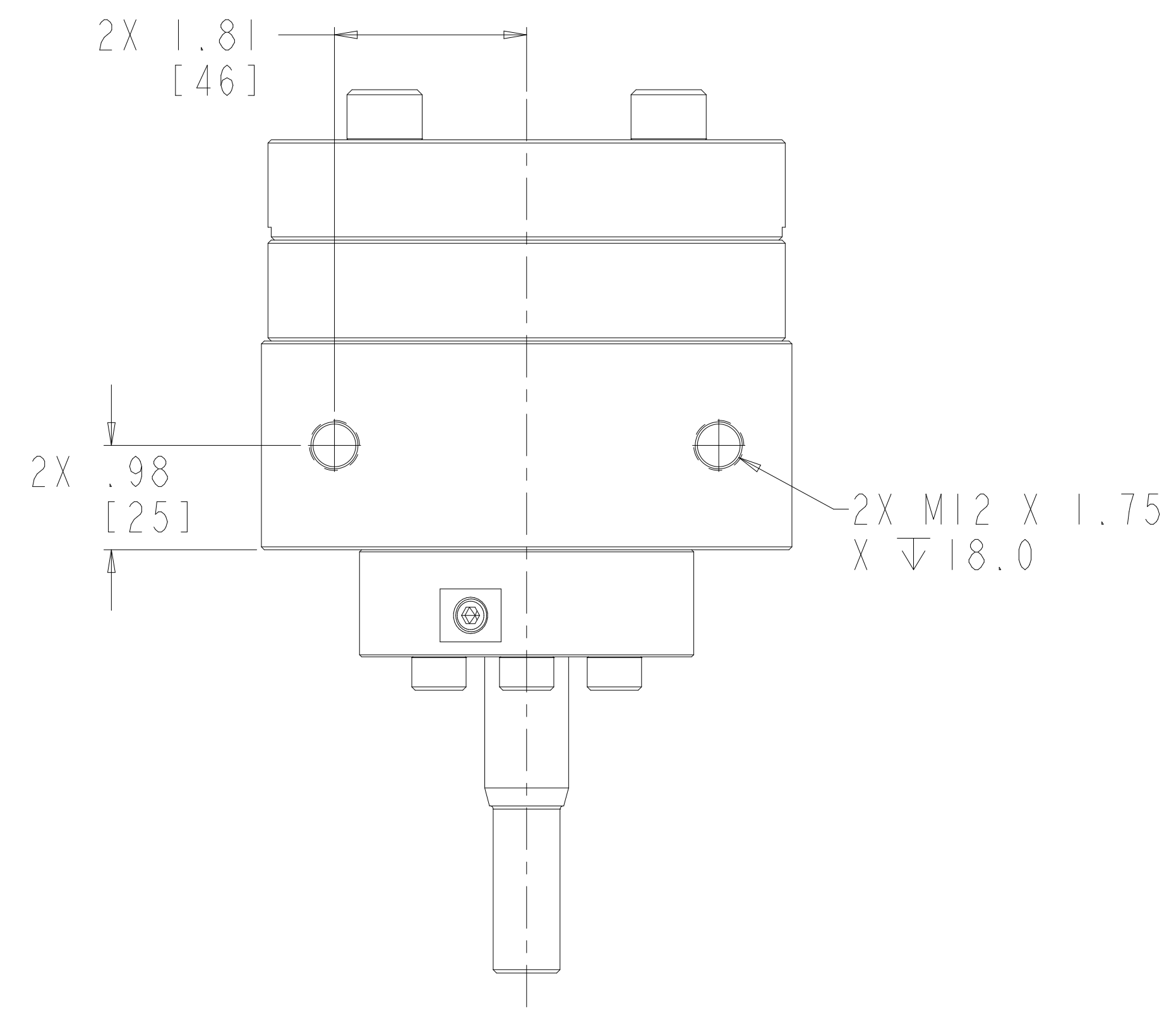
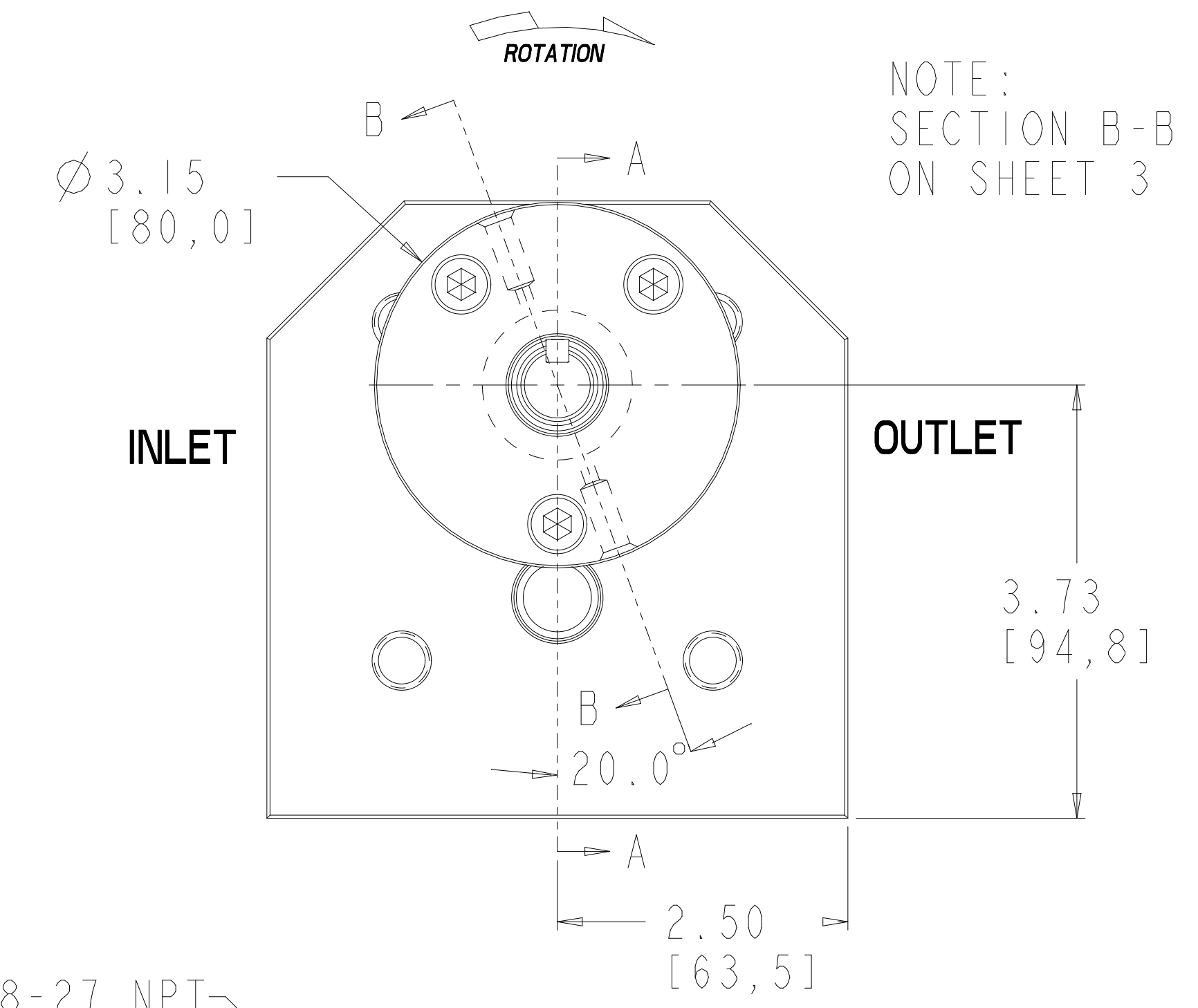
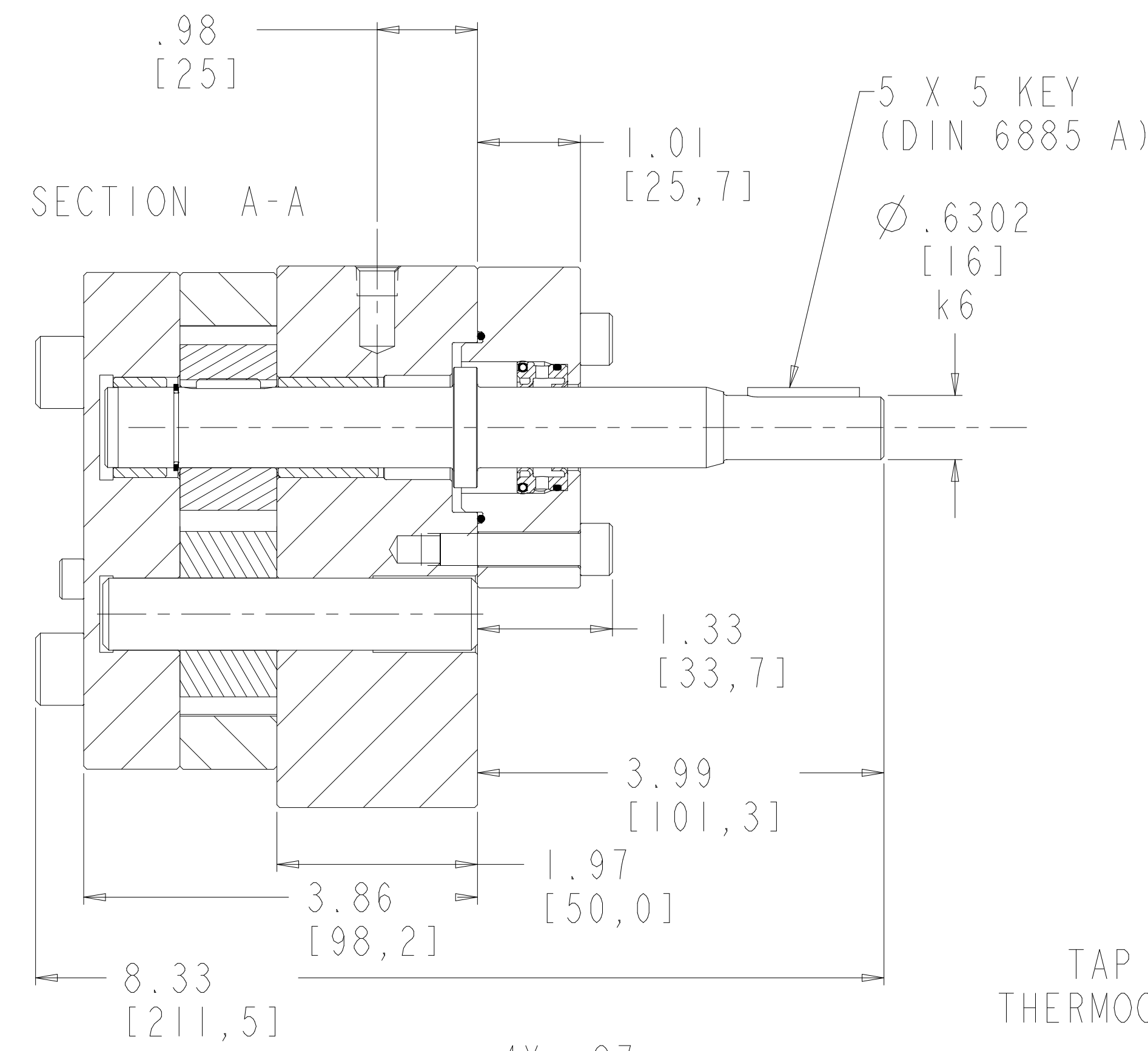
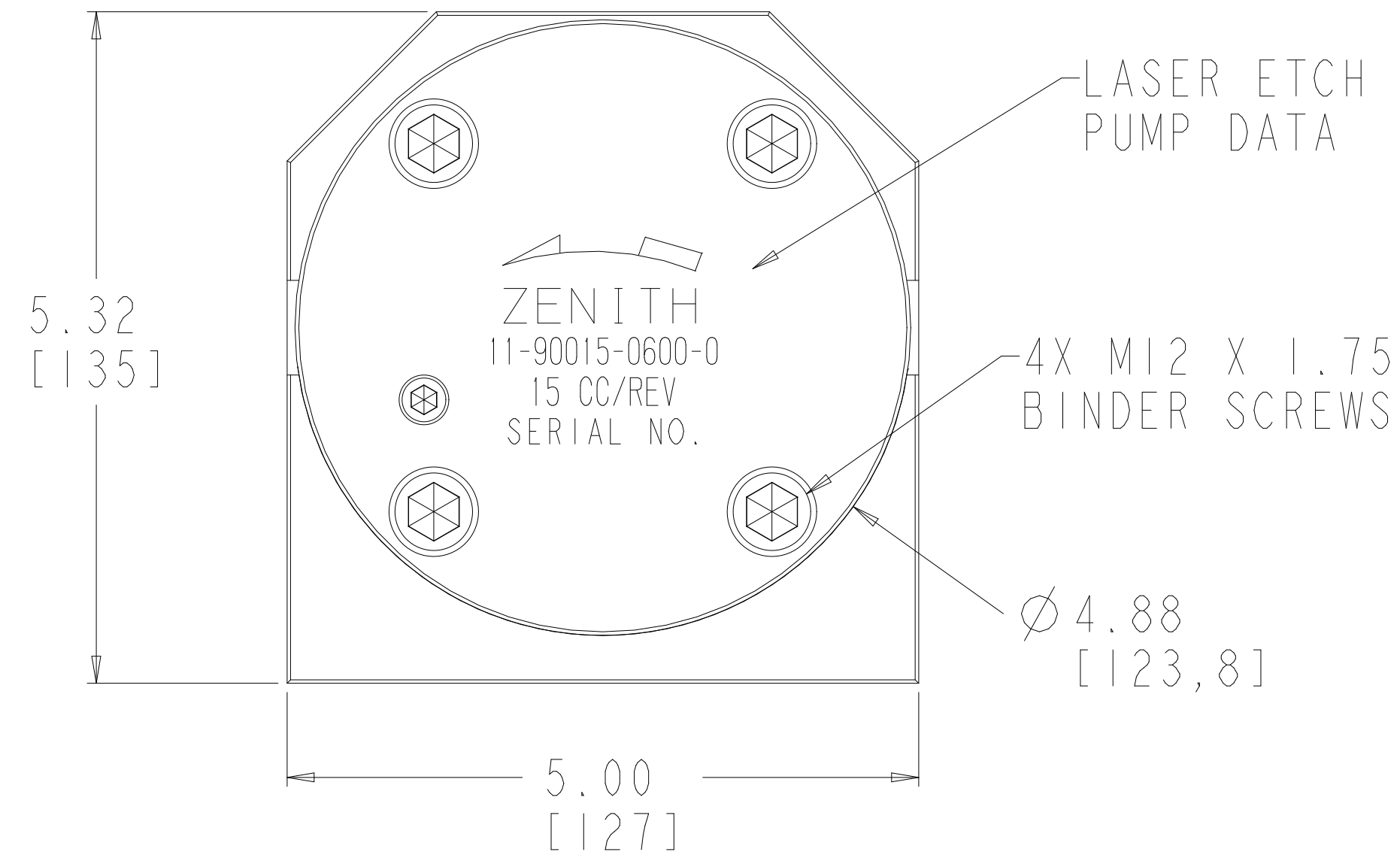


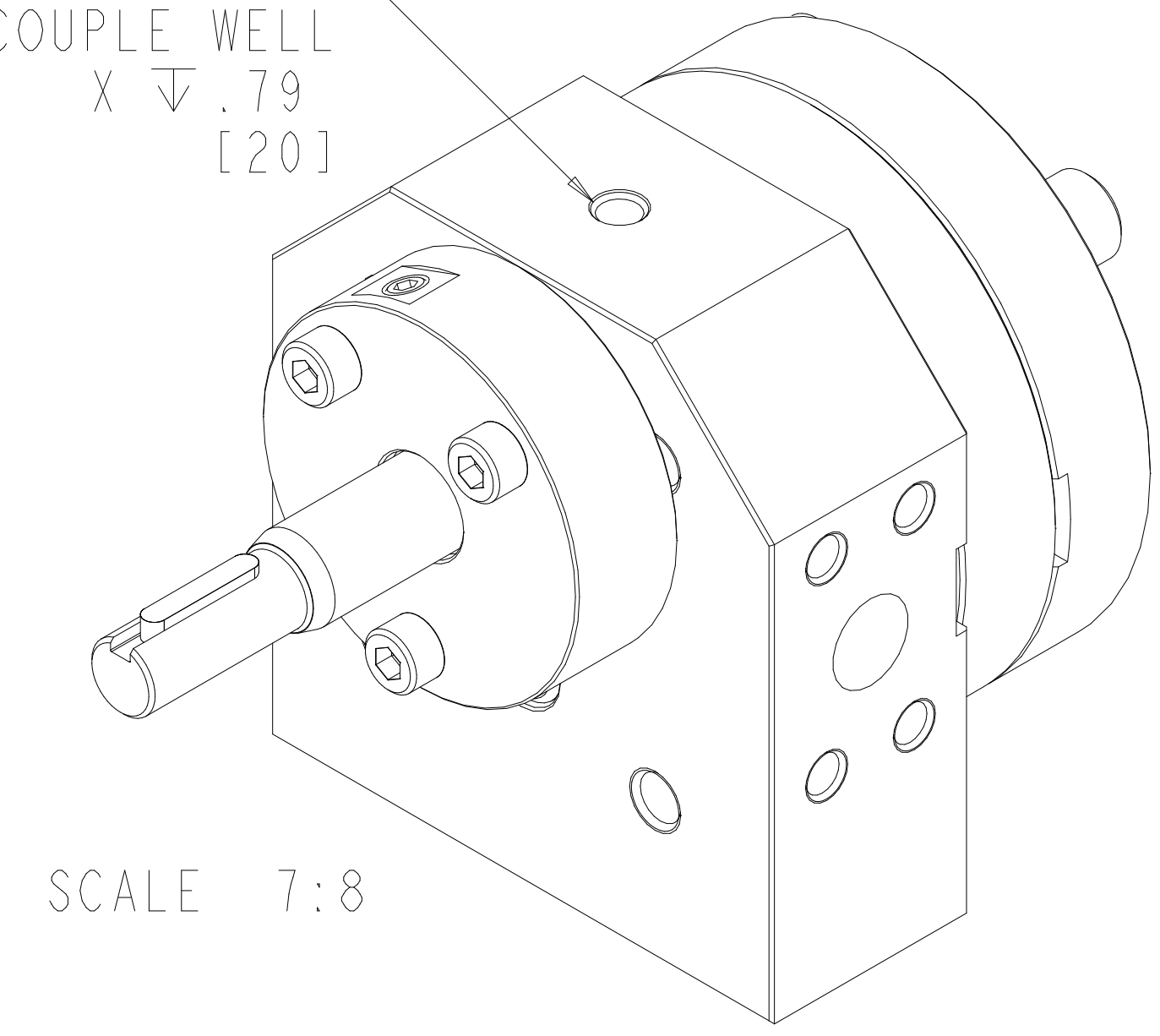
NOTES:

- 1) TIGHTEN M12 BINDER BOLTS TO:
1200in-lb NON-LUBRICATED; 803in-lb LUBRICATED
- 2) TIGHTEN M6 BINDER BOLTS TO:
350in-lb NON-LUBRICATED; 232in-lb LUBRICATED
- 3) TIGHTEN M8 SEAL HOUSING BOLTS TO:
350in-lb NON-LUBRICATED; 232in-lb LUBRICATED

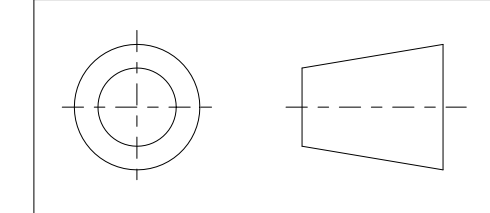
REVISIONS			
LTR	DESCRIPTION	DATE	APPROVED
A	WAS 18-76504-0186-1	3.13.2001	118-01



TAP 1/8-27 NPT
THERMOCOUPLE WELL
X $\nabla .79$ [20]



INTERPRET PER ANSI-Y14.5M 1982



BOTTOM VIEW

DESIGN, SPECIFICATIONS, AND DETAILS CONTAINED ON OR REFERENCED TO ON THIS DRAWING ARE PROPRIETARY TO THE ZENITH DIVISION, PARKER HANNIFIN CORPORATION AND MAY NOT BE REPRODUCED, MANUFACTURED, OR OTHERWISE USED WITHOUT THE WRITTEN CONSENT OF THE ZENITH DIVISION, PARKER HANNIFIN CORPORATION

UNLESS OTHERWISE SPECIFIED DIMENSIONS ARE IN INCH TOLERANCES
.XX ± 0.01
.XXX ± 0.005
ANG ± 0.5

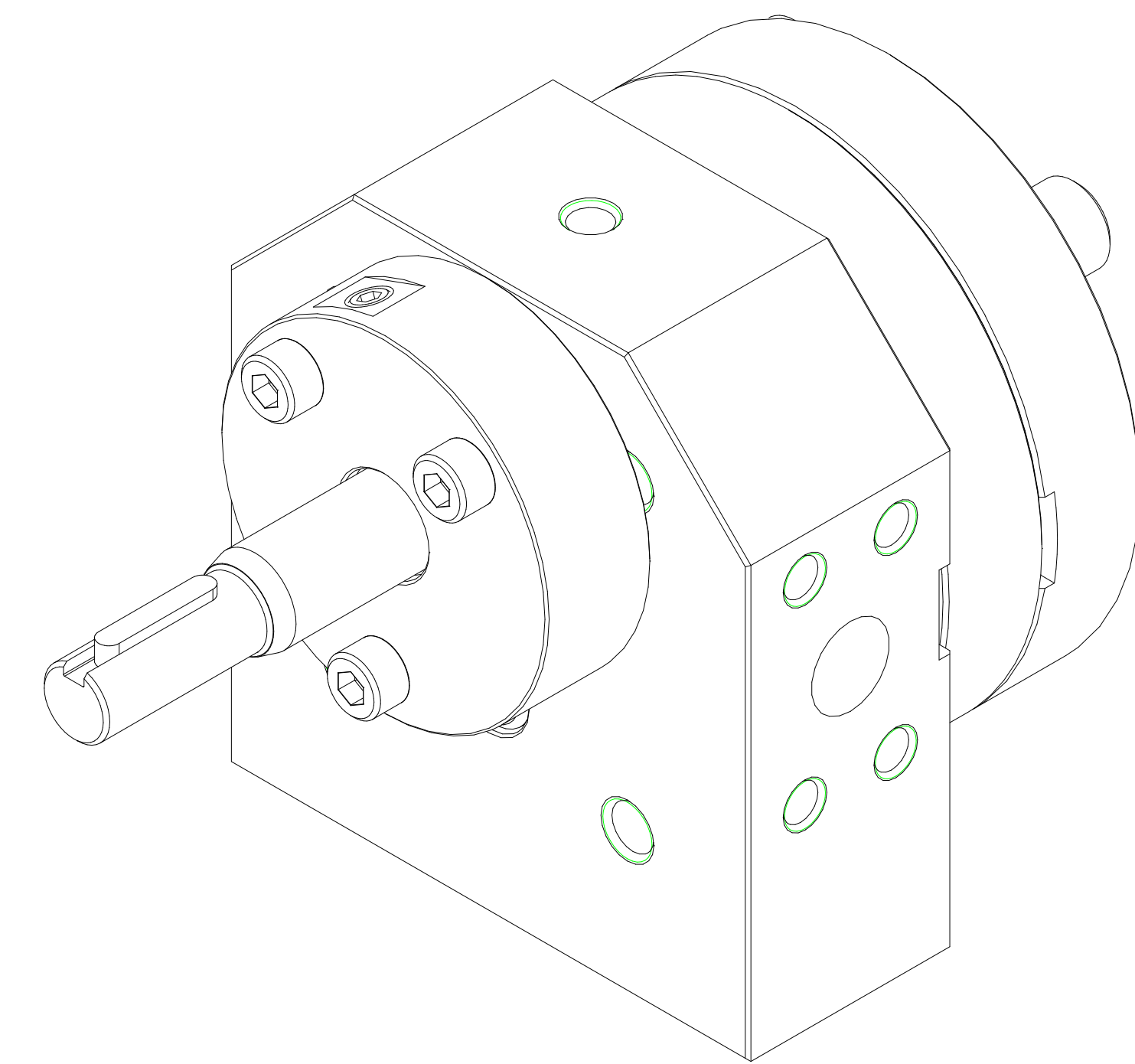
MATERIAL SEE BILL OF MATERIALS SHEET 2 OF 3

DRAWN	JDK	12.01.00
CHECKED		
PART WEIGHT =	LBS	
SURFACE AREA =	IN ²	
MODEL NUMBER =	119001506000	
DRAWING =	119001506000	
PRO/ENGINEER DRAWING	SIZE D	

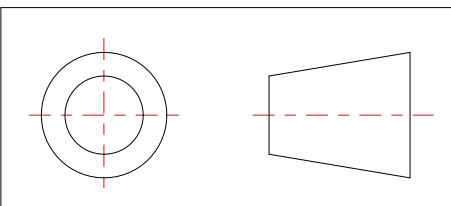
	ZENITH PUMPS DIVISION
5910 ELWIN BUCHANAN DRIVE, SANFORD, NC 27330 PARKER HANNIFIN CORPORATION	
H-9000 TYPE PUMP 15 CC/REV	
SCALE 7:8	DRAWING NUMBER
SHEET 1 OF 3	11-90015-0600-0

ITEM No.	PART NUMBER	PART NAME	MATERIAL	QTY
	119001506000	H-9000 TYPE PUMP		1
2	157956800232	SHAFT, DRIVE	AISI D2	1
3	156925100244	PLATE, GEAR	D2	1
7	146915100042	ASSEMBLY, REAR PLATE		1
33	156915100224	PLATE, REAR	AISI D2	1
34	150451303311	BEARING, SLEEVE	D2	1
8	146945200042	ASSEMBLY, FRONT PLATE		1
31	156945200224	PLATE, FRONT	AISI D2	1
32	150451303261	BEARING, SLEEVE	D2	1
9	150115600062	ARBOR	D2	1
5	152844401322	GEAR, DRIVING	AISI D2	1
6	152834401122	GEAR, DRIVEN	D2	1
4	185600800071	KEY, ROUND	FREE CUTTING STEEL	1
10	151609100051	DOWEL, HOLLOW	D2	2
17	187861210902	SHCS M12X1.75 X 90 MM GRADE 12.9		4
18	185600800011	KEY, SQUARE	18-8 STAINLESS	1
19	187860610552	SHCS M6X1 X 55MM ALLOY 12.9		1
16	181831800162	RING - RETAINING	PH 15-7 MO	1
15	187650402101_INV	O-RING	PTFE ENCAPSULATED	1
11	155401900423	HOUSING, LIPSEAL	440C	1
51	147900400032	SUB-ASSEMBLY, ASSY INSTRUCTION	SEE BILL OF MATERIALS	1
41	150013100662	SEAL ASSEMBLY TOOL	ACETAL COPOLYMER	1
13	187900401351	TANDEM LIP SEAL	CARBON FIBER FILLED	1
20	187860810352	SHCS M8X1.25 X 35MM ALLOY 12.9		3
21	187300000071	PLUG, DRYSEAL TYPE	AUSTENITIC SS	2

REVISIONS			
LTR	DESCRIPTION	DATE	APPROVED
A	WAS 18-76504-0186-1	3.13.2001	118-01



INTERPRET PER ANSI-Y14.5M 1982



DESIGN, SPECIFICATIONS, AND DETAILS CONTAINED ON OR REFERENCED TO ON THIS DRAWING ARE PROPRIETARY TO THE ZENITH DIVISION, PARKER HANNIFIN CORPORATION AND MAY NOT BE REPRODUCED, MANUFACTURED, OR OTHERWISE USED WITHOUT THE WRITTEN CONSENT OF THE ZENITH DIVISION, PARKER HANNIFIN CORPORATION

UNLESS OTHERWISE SPECIFIED DIMENSIONS ARE IN INCH TOLERANCES

.XX ± 0.01
.XXX ± 0.005
ANG ± 0.5

MATERIAL

SEE BILL OF MATERIALS
SHEET 2 OF 3

DRAWN JDK 12.01.00

CHECKED

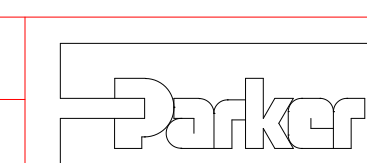
PART WEIGHT = LBS

SURFACE AREA = IN²

MODEL NUMBER = 119001506000
DRAWING = 119001506000

PRO/ENGINEER
DRAWING

SIZE D



ZENITH PUMPS DIVISION

5910 ELWIN BUCHANAN DRIVE, SANFORD, NC 27330
PARKER HANNIFIN CORPORATION

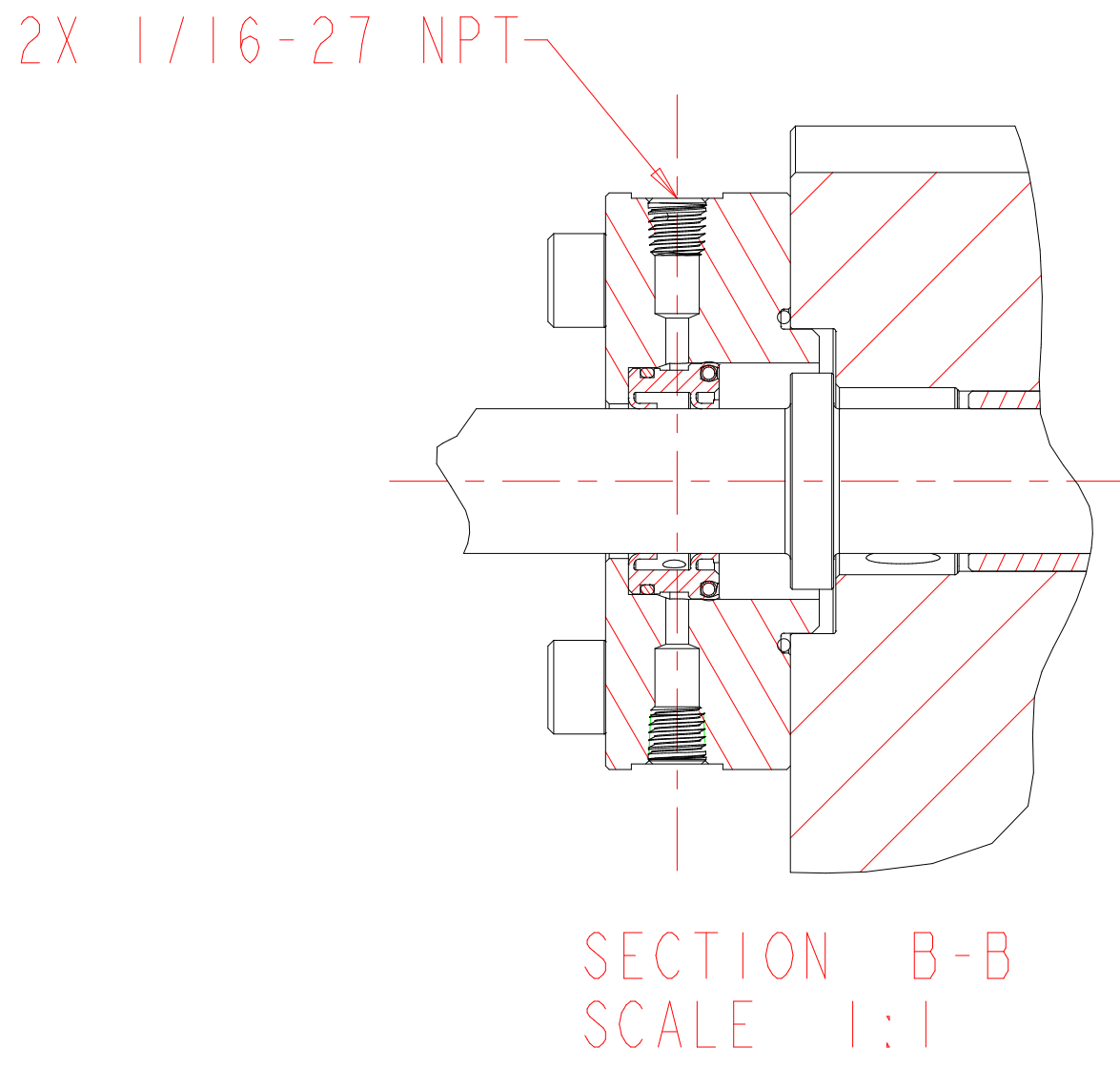
H-9000 TYPE PUMP
15 CC/REV

SCALE 1:1
SHEET 2 OF 3

DRAWING NUMBER

11-90015-0600-0

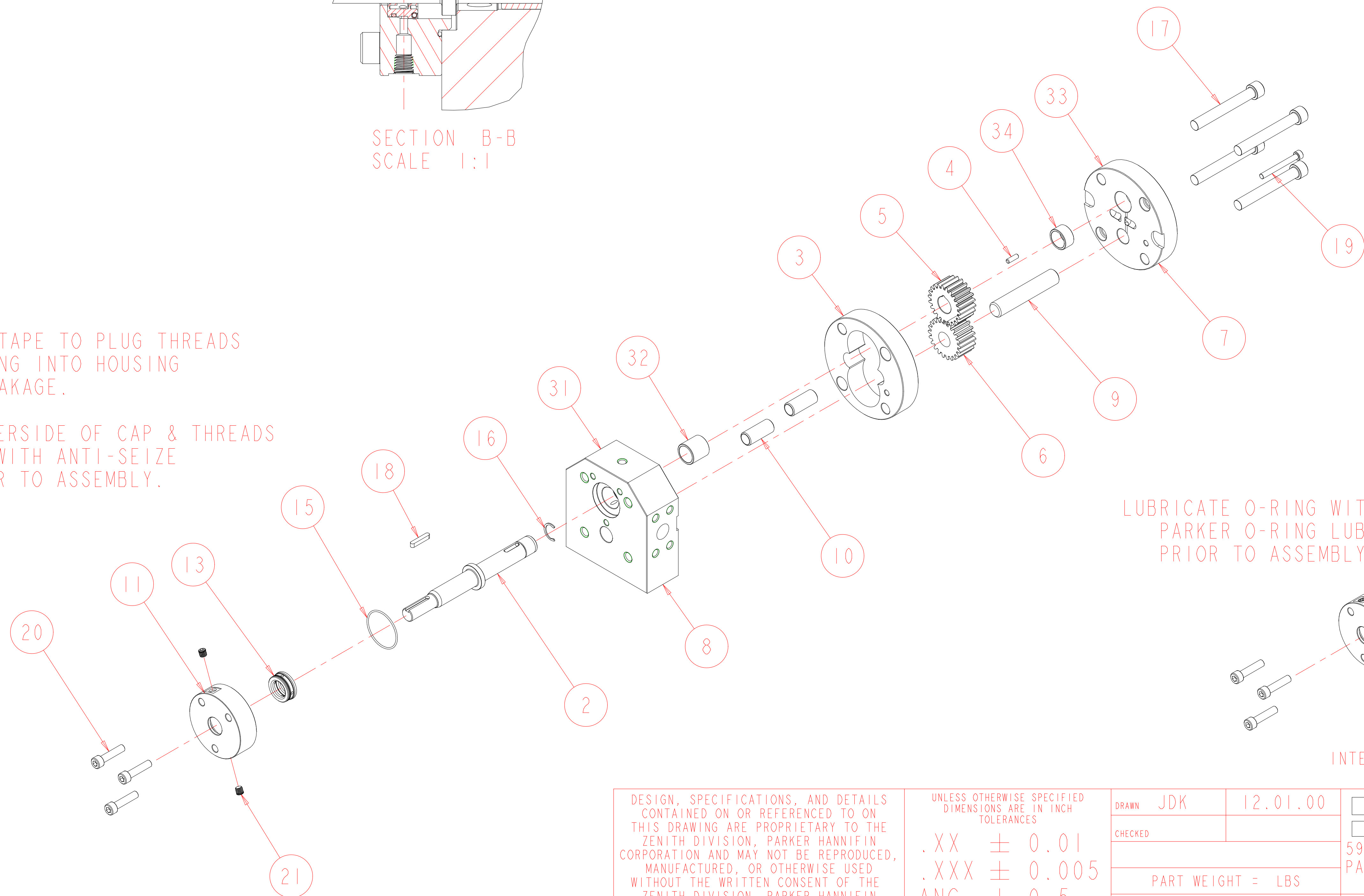
REVISIONS			
LTR	DESCRIPTION	DATE	APPROVED
A	WAS 18-76504-0186-1	3.13.2001	118-01



NOTES:

APPLY TEFLON TAPE TO PLUG THREADS WHEN ASSEMBLING INTO HOUSING TO PREVENT LEAKAGE.

LUBRICATE UNDERSIDE OF CAP & THREADS ON FASTENERS WITH ANTI-SEIZE COMPOUND PRIOR TO ASSEMBLY.

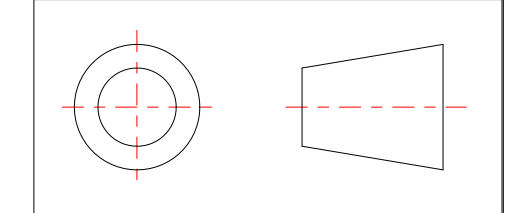


INSTALL SEAL ASSEMBLY TOOL ONTO SHAFT TO COVER KEYWAY DURING SEAL INSTALLATION, TO PREVENT DAMAGE.

LUBRICATE O-RING WITH PARKER O-RING LUBE PRIOR TO ASSEMBLY.

PRESS SEAL FIRMLY INTO HOUSING PRIOR TO INSTALLING ONTO PUMP

INTERPRET PER ANSI-Y14.5M 1982



DESIGN, SPECIFICATIONS, AND DETAILS CONTAINED ON OR REFERENCED TO ON THIS DRAWING ARE PROPRIETARY TO THE ZENITH DIVISION, PARKER HANNIFIN CORPORATION AND MAY NOT BE REPRODUCED, MANUFACTURED, OR OTHERWISE USED WITHOUT THE WRITTEN CONSENT OF THE ZENITH DIVISION, PARKER HANNIFIN CORPORATION

UNLESS OTHERWISE SPECIFIED DIMENSIONS ARE IN INCH TOLERANCES
 .XX ± 0.01
 .XXX ± 0.005
 ANG ± 0.5

MATERIAL
 SEE BILL OF MATERIALS
 SHEET 2 OF 3

DRAWN	JDK	12.01.00
CHECKED		
PART WEIGHT = LBS		
SURFACE AREA = IN ²		
PRO/ENGINEER DRAWING	SIZE D	

	ZENITH PUMPS DIVISION
5910 ELWIN BUCHANAN DRIVE, SANFORD, NC 27330 PARKER HANNIFIN CORPORATION	
H-9000 TYPE PUMP 15 CC/REV	
SCALE 3:8 SHEET 3 OF 3	DRAWING NUMBER 11-90015-0600-0