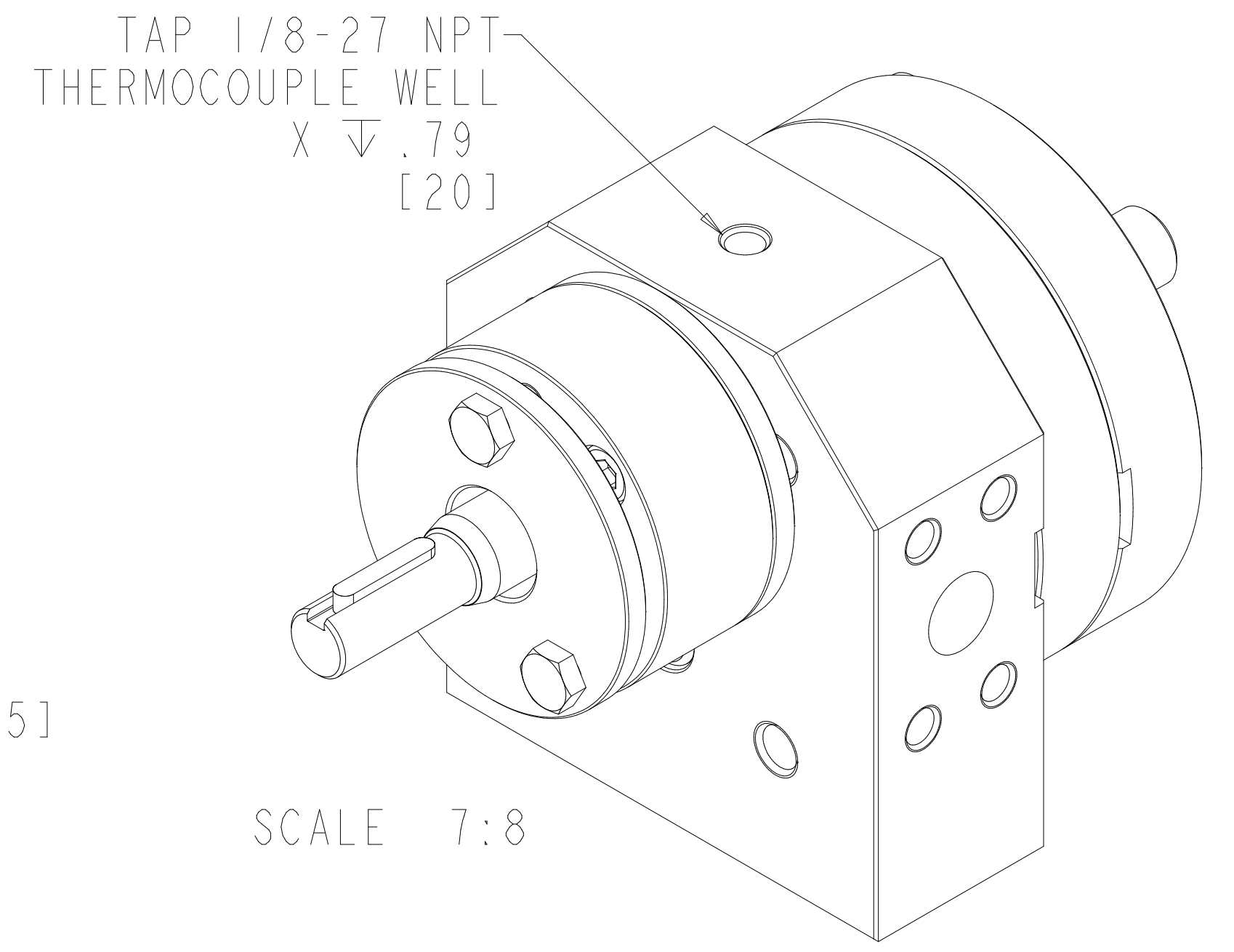
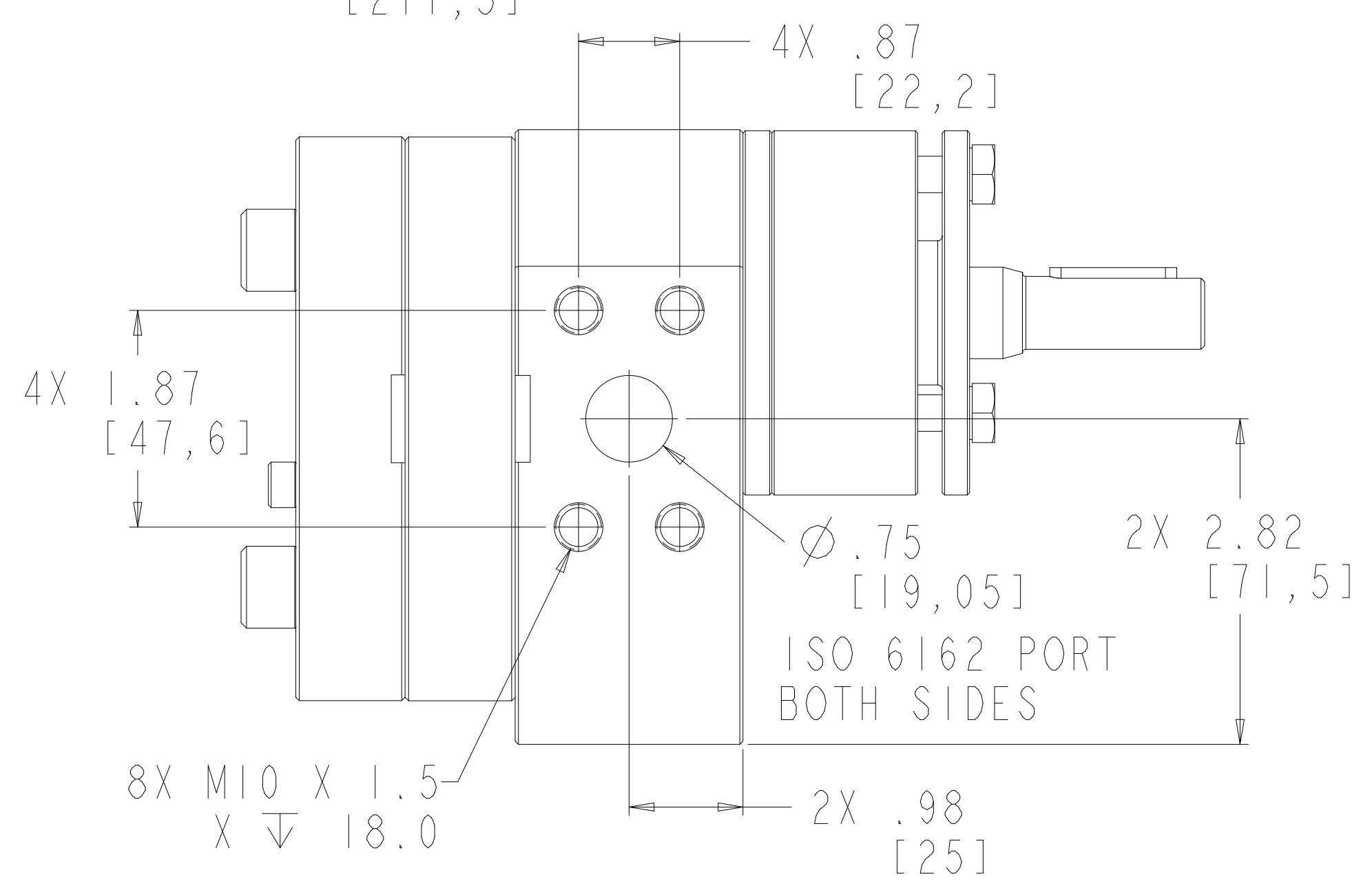
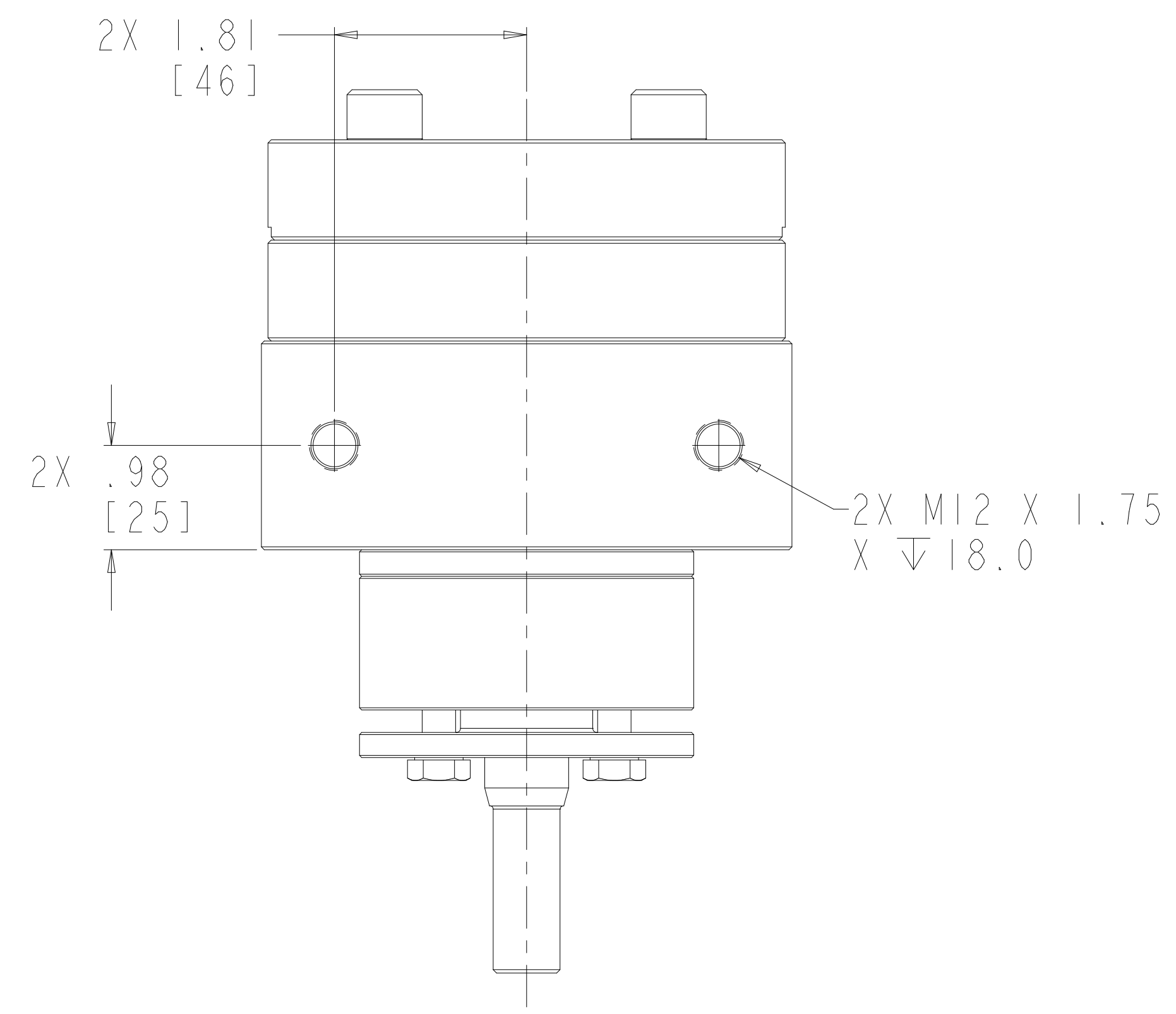
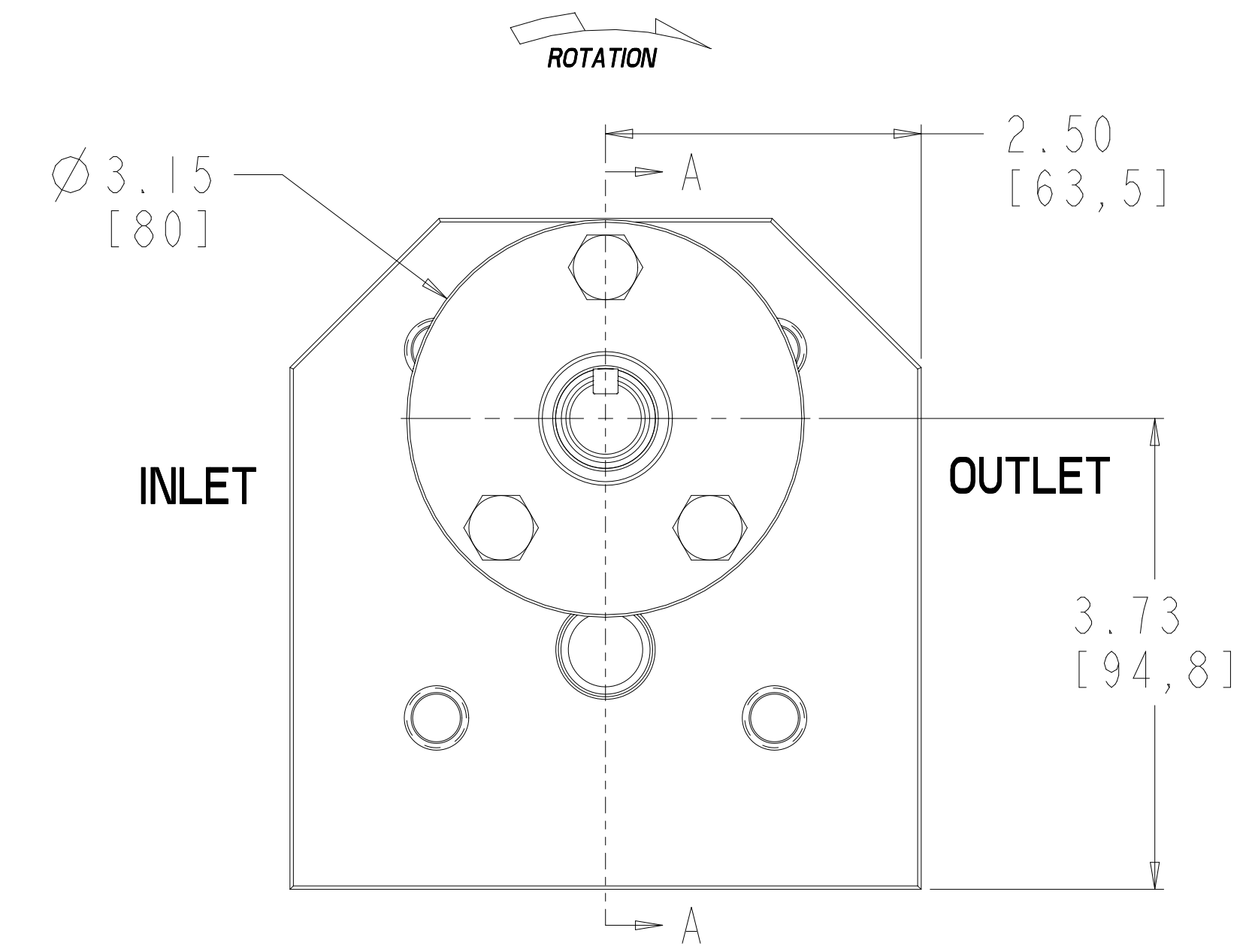
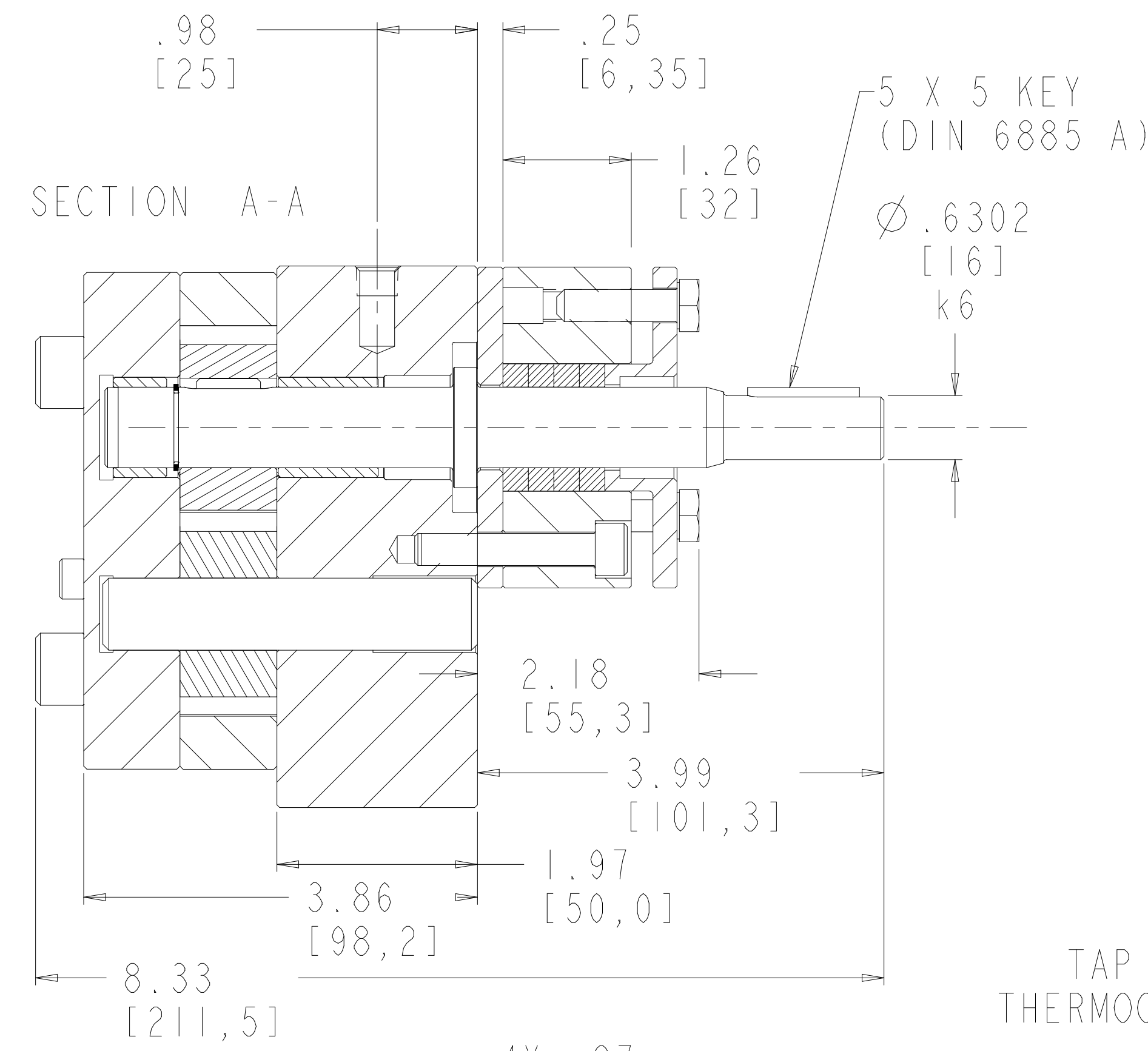
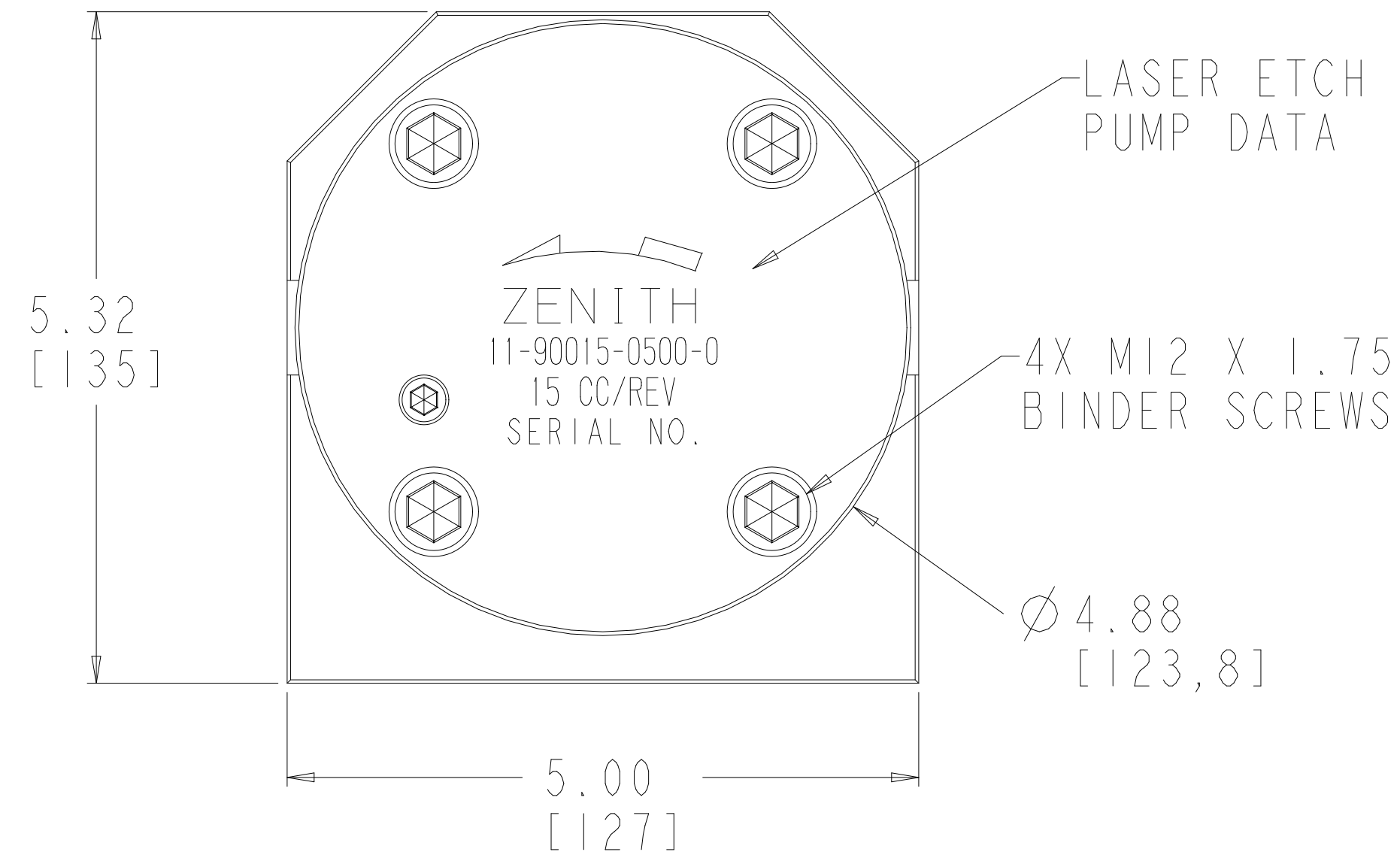


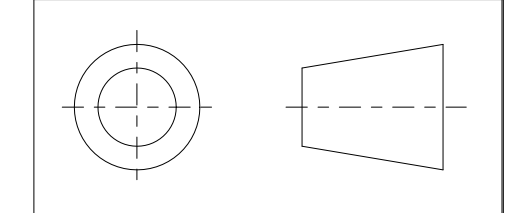
NOTES:

- 1) TIGHTEN M12 BINDER BOLTS TO:
1200in-lb NON-LUBRICATED; 803in-lb LUBRICATED
- 2) TIGHTEN M8 PACKING HOUSING BOLTS TO:
350in-lb NON-LUBRICATED; 232in-lb LUBRICATED
- 3) FOR SHIPPING LEAVE M8 HEX BOLTS FINGER TIGHT
- 4) TIGHTEN M8 HEX BOLTS UNTIL LEAKAGE IS CONTROLLED

REVISIONS			
LTR	DESCRIPTION	DATE	APPROVED
F	UPDATED SERIES 9000 PUMP DATA	05-22-98	620-97
G	ADDED 18-18318-0016-2 AND SHEET 3	7.26.99	250-99



INTERPRET PER ANSI-Y14.5M 1982



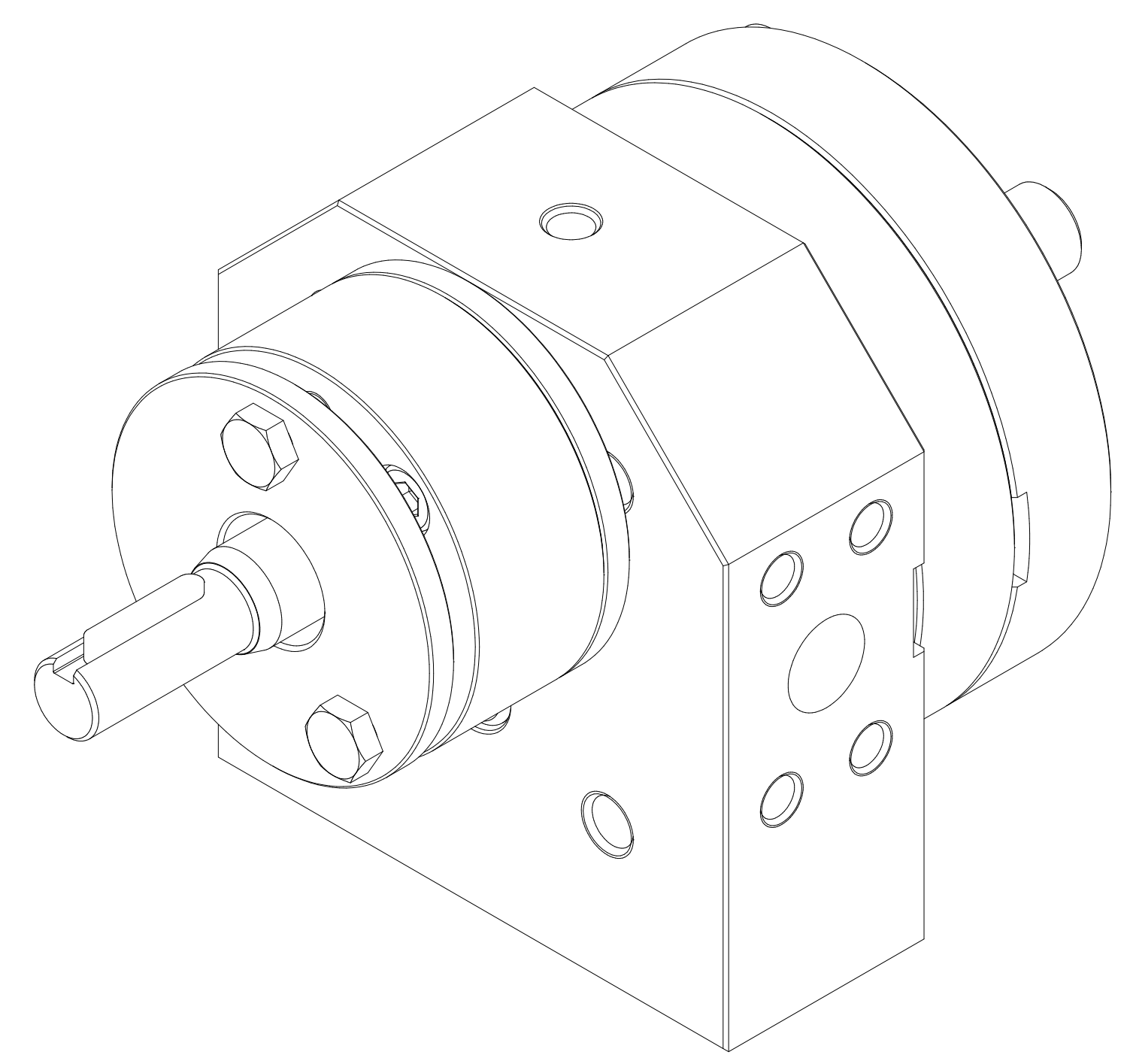
BOTTOM VIEW

DESIGN, SPECIFICATIONS, AND DETAILS CONTAINED ON OR REFERENCED TO ON THIS DRAWING ARE PROPRIETARY TO THE ZENITH DIVISION, PARKER HANNIFIN CORPORATION AND MAY NOT BE REPRODUCED, MANUFACTURED, OR OTHERWISE USED WITHOUT THE WRITTEN CONSENT OF THE ZENITH DIVISION, PARKER HANNIFIN CORPORATION	UNLESS OTHERWISE SPECIFIED DIMENSIONS ARE IN INCH TOLERANCES	DRAWN MJW	06-19-95	ZENITH PUMPS DIVISION 5910 ELWIN BUCHANAN DRIVE, SANFORD, NC 27330 PARKER HANNIFIN CORPORATION
	.XX ± 0.01 .XXX ± 0.005 ANG ± 0.5	CHECKED		
MATERIAL	SEE BILL OF MATERIALS SHEET 2 OF 3	PRO/ENGINEER DRAWING	SIZE D	PART WEIGHT = LBS SURFACE AREA = IN ² MODEL NUMBER = 119001505000 DRAWING = 119001505000 SCALE 7:8 SHEET 1 OF 3
				DRAWING NUMBER
				11-90015-0500-0

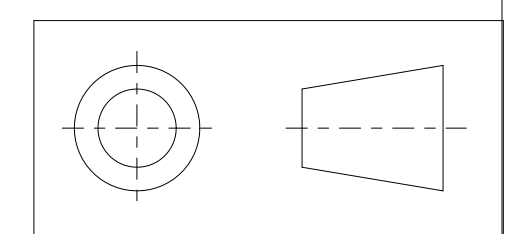
ITEM No.	PART NUMBER	PART NAME	MATERIAL	QTY
	119001505000	H-9000 TYPE PUMP		1
2	157956800232	SHAFT, DRIVE	AISI D2	1
3	156925100244	PLATE, GEAR	D2	1
7	146915100042	ASSEMBLY, REAR PLATE		1
33	156915100224	PLATE, REAR	AISI D2	1
34	150451303311	BEARING, SLEEVE	D2	1
8	146945200042	ASSEMBLY, FRONT PLATE		1
31	156945200224	PLATE, FRONT	AISI D2	1
32	150451303261	BEARING, SLEEVE	D2	1
9	150115600062	ARBOR	D2	1
5	152844401322	GEAR, DRIVING	D2	1
6	152834401122	GEAR, DRIVEN	D2	1
4	185600800071	KEY, ROUND	FREE CUTTING STEEL	1
10	151609100051	DOWEL, HOLLOW	D2	2
17	187861210902	SHCS M12X1.75 X 90 MM GRADE 12.9		4
18	185600800011	KEY, SQUARE	18-8 STAINLESS	1
11	156371000083	PLATE, COLLAR	D2	1
12	155400601803	HOUSING, PACKING	AISI 4140	1
13	187900101801	SEAL, PACKING	GRAFOIL	4
14	155100102063	GLAND, PACKING	AISI 4140	1
15	187860810452	SHCS M8X1.25 X 45MM ALLOY 12.9		3
16	187890810302	HHCS M8X1.25 X 30MM ALLOY GRADE 8.8		3
19	187860610552	SHCS M6X1 X 55MM ALLOY 12.9		1
22	181831800162	RING - RETAINING	PH 15-7 MO	1



REVISIONS			
LTR	DESCRIPTION	DATE	APPROVED
F	UPDATED SERIES 9000 PUMP DATA	05-22-98	620-97
G	ADDED 18-18318-0016-2 AND SHEET 3	7.26.99	250-99



INTERPRET PER ANSI-Y14.5M 1982



DESIGN, SPECIFICATIONS, AND DETAILS CONTAINED ON OR REFERENCED TO ON THIS DRAWING ARE PROPRIETARY TO THE ZENITH DIVISION, PARKER HANNIFIN CORPORATION AND MAY NOT BE REPRODUCED, MANUFACTURED, OR OTHERWISE USED WITHOUT THE WRITTEN CONSENT OF THE ZENITH DIVISION, PARKER HANNIFIN CORPORATION

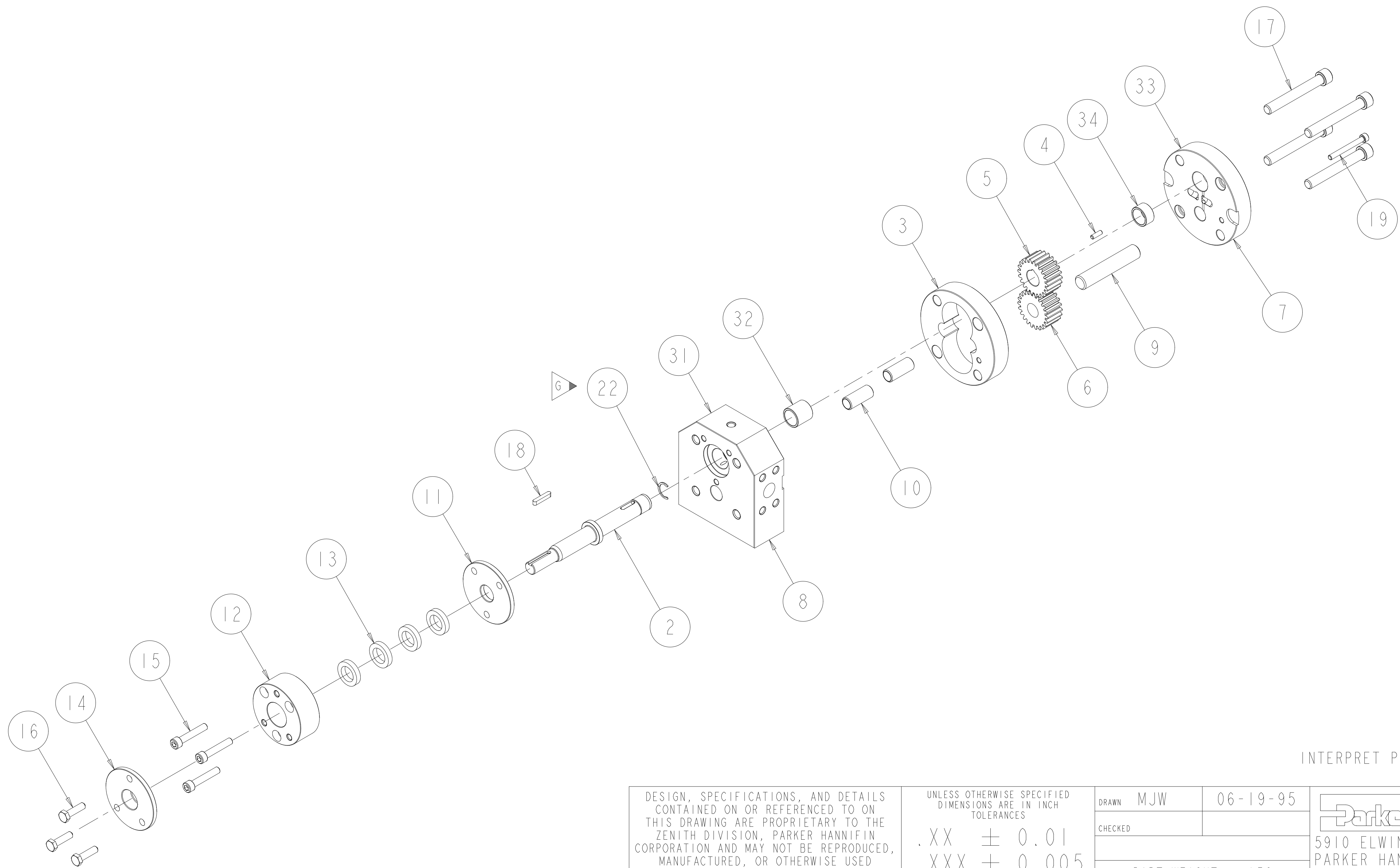
UNLESS OTHERWISE SPECIFIED DIMENSIONS ARE IN INCH TOLERANCES
 .XX ± 0.01
 .XXX ± 0.005
 ANG ± 0.5

MATERIAL
 SEE BILL OF MATERIALS
 SHEET 2 OF 3

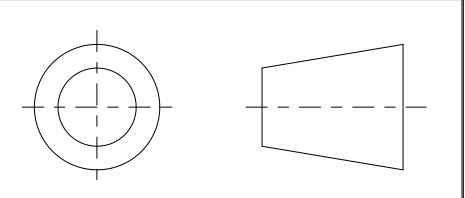
DRAWN MJW 06-19-95
 CHECKED
 PART WEIGHT = LBS
 SURFACE AREA = IN²
 MODEL NUMBER = 119001505000
 DRAWING = 119001505000
 PRO/ENGINEER DRAWING
 SIZE D

Parker ZENITH PUMPS DIVISION
 5910 ELWIN BUCHANAN DRIVE, SANFORD, NC 27330
 PARKER HANNIFIN CORPORATION
 H-9000 TYPE PUMP
 15 CC/REV
 SCALE 1:1
 SHEET 2 OF 3
 DRAWING NUMBER
 11-90015-0500-0

REVISIONS			
LTR	DESCRIPTION	DATE	APPROVED
G	ADDED 18-18318-0016-2 AND SHEET 3	7.26.99	250-99



INTERPRET PER ANSI-Y14.5M 1982



DESIGN, SPECIFICATIONS, AND DETAILS CONTAINED ON OR REFERENCED TO ON THIS DRAWING ARE PROPRIETARY TO THE ZENITH DIVISION, PARKER HANNIFIN CORPORATION AND MAY NOT BE REPRODUCED, MANUFACTURED, OR OTHERWISE USED WITHOUT THE WRITTEN CONSENT OF THE ZENITH DIVISION, PARKER HANNIFIN CORPORATION

UNLESS OTHERWISE SPECIFIED DIMENSIONS ARE IN INCH TOLERANCES
 .XX ± 0.01
 .XXX ± 0.005
 ANG ± 0.5

MATERIAL
 SEE BILL OF MATERIALS
 SHEET 2 OF 3

DRAWN	MJW	06-19-95
CHECKED		
PART WEIGHT = LBS		
SURFACE AREA = IN ²		
PRO/ENGINEER	SIZE D	
DRAWING		

ZENITH PUMPS DIVISION 5910 ELWIN BUCHANAN DRIVE, SANFORD, NC 27330 PARKER HANNIFIN CORPORATION	H-9000 TYPE PUMP 15 CC/REV	
	SCALE 3:8 SHEET 3 OF 3	DRAWING NUMBER 11-90015-0500-0