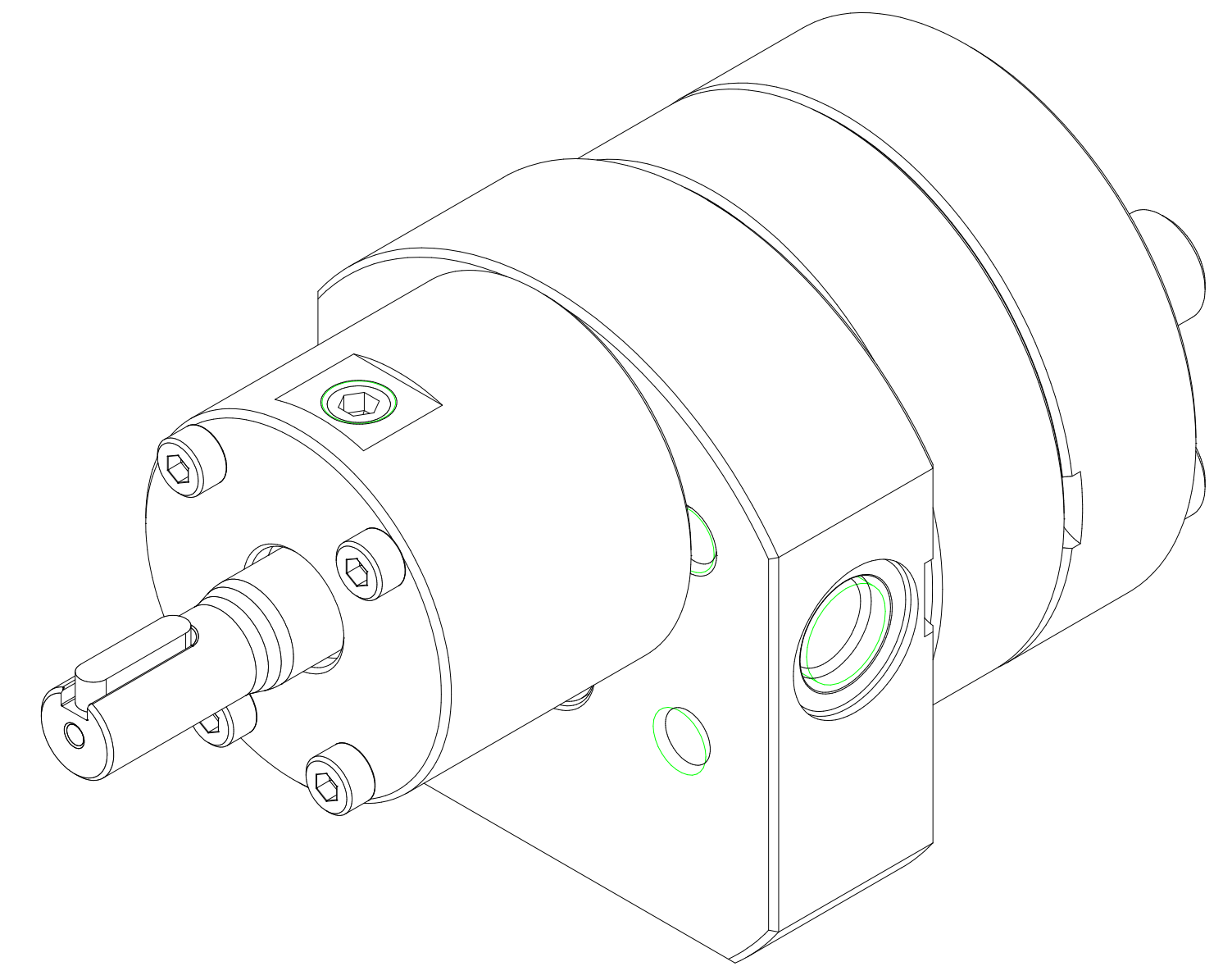
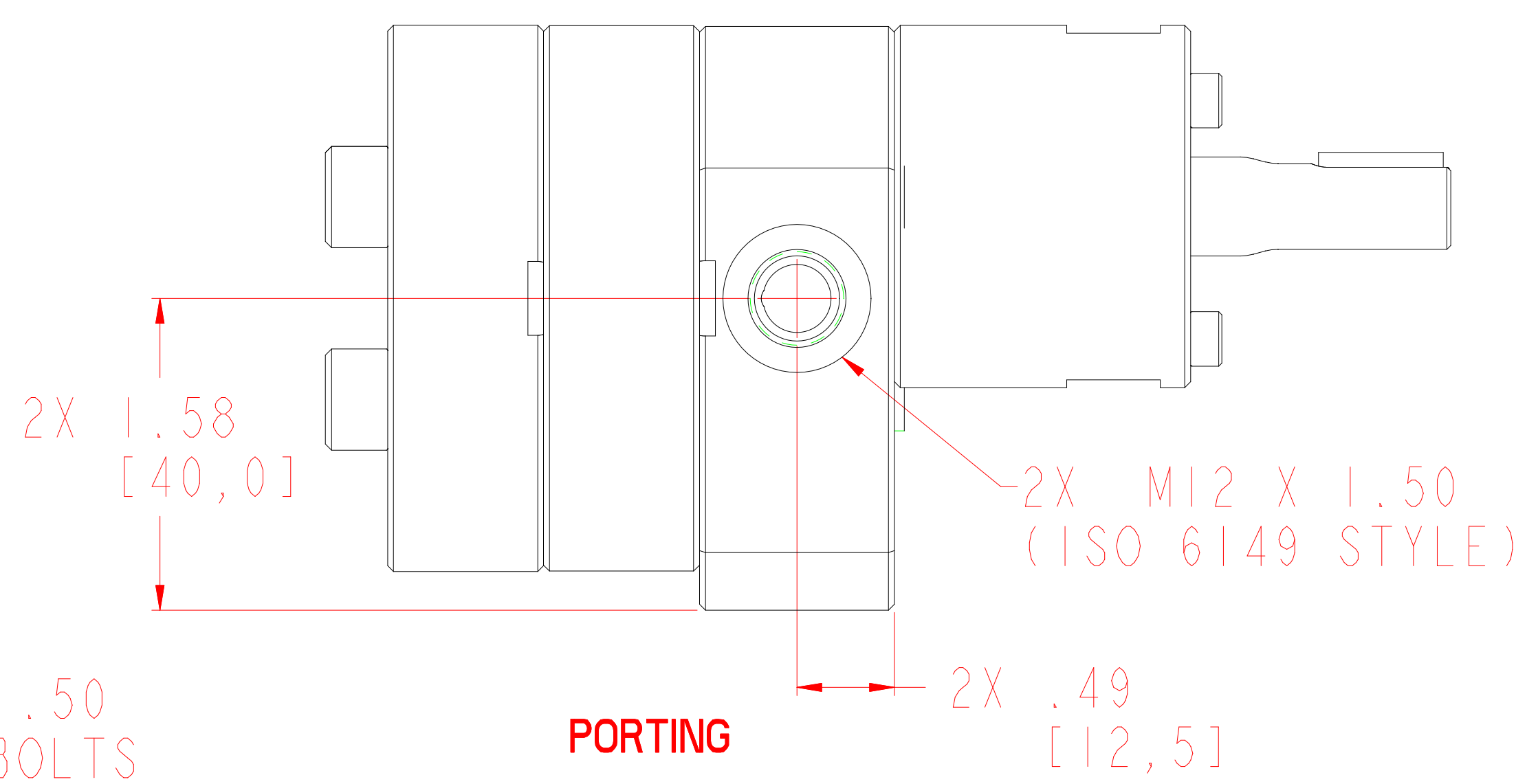
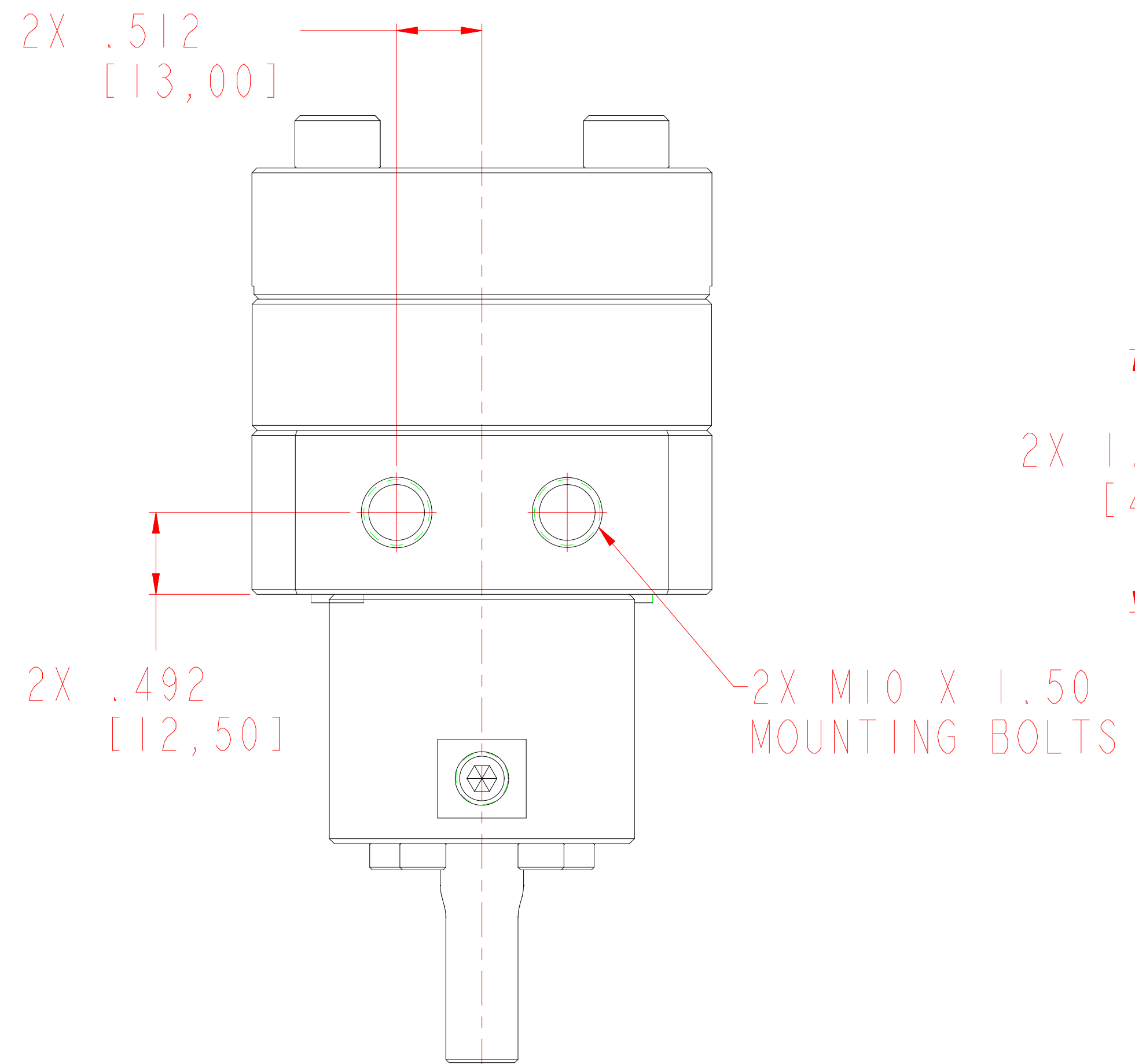
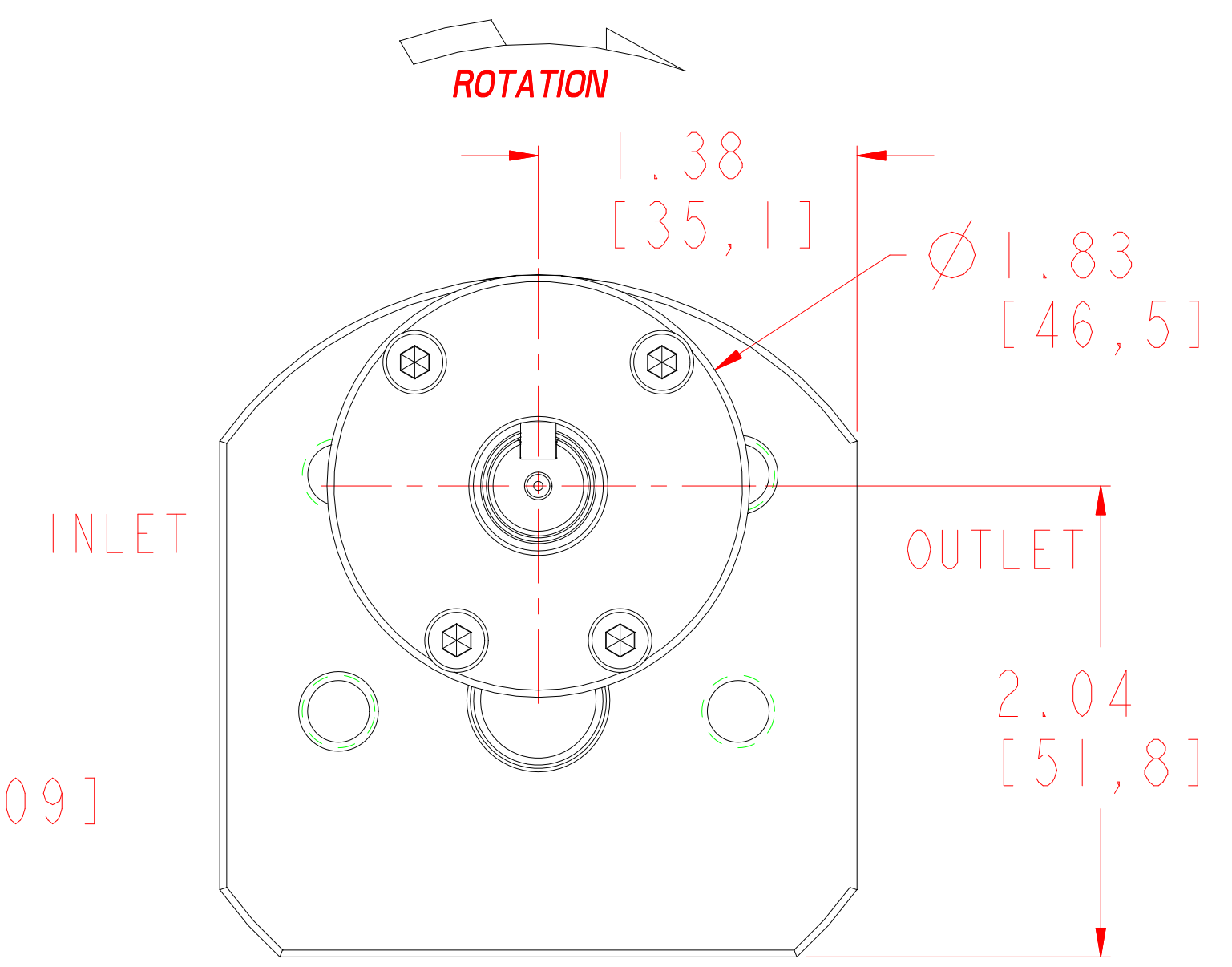
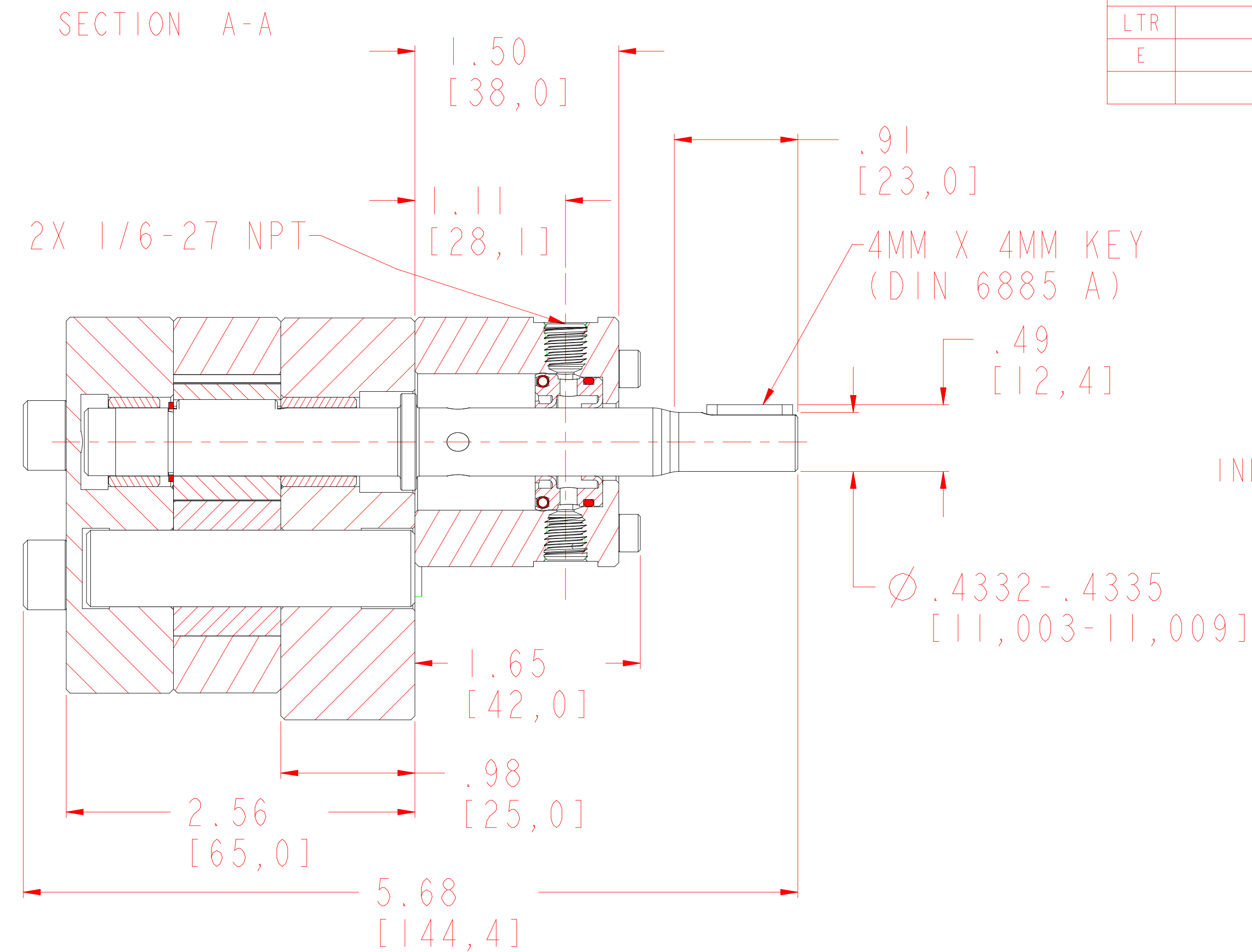
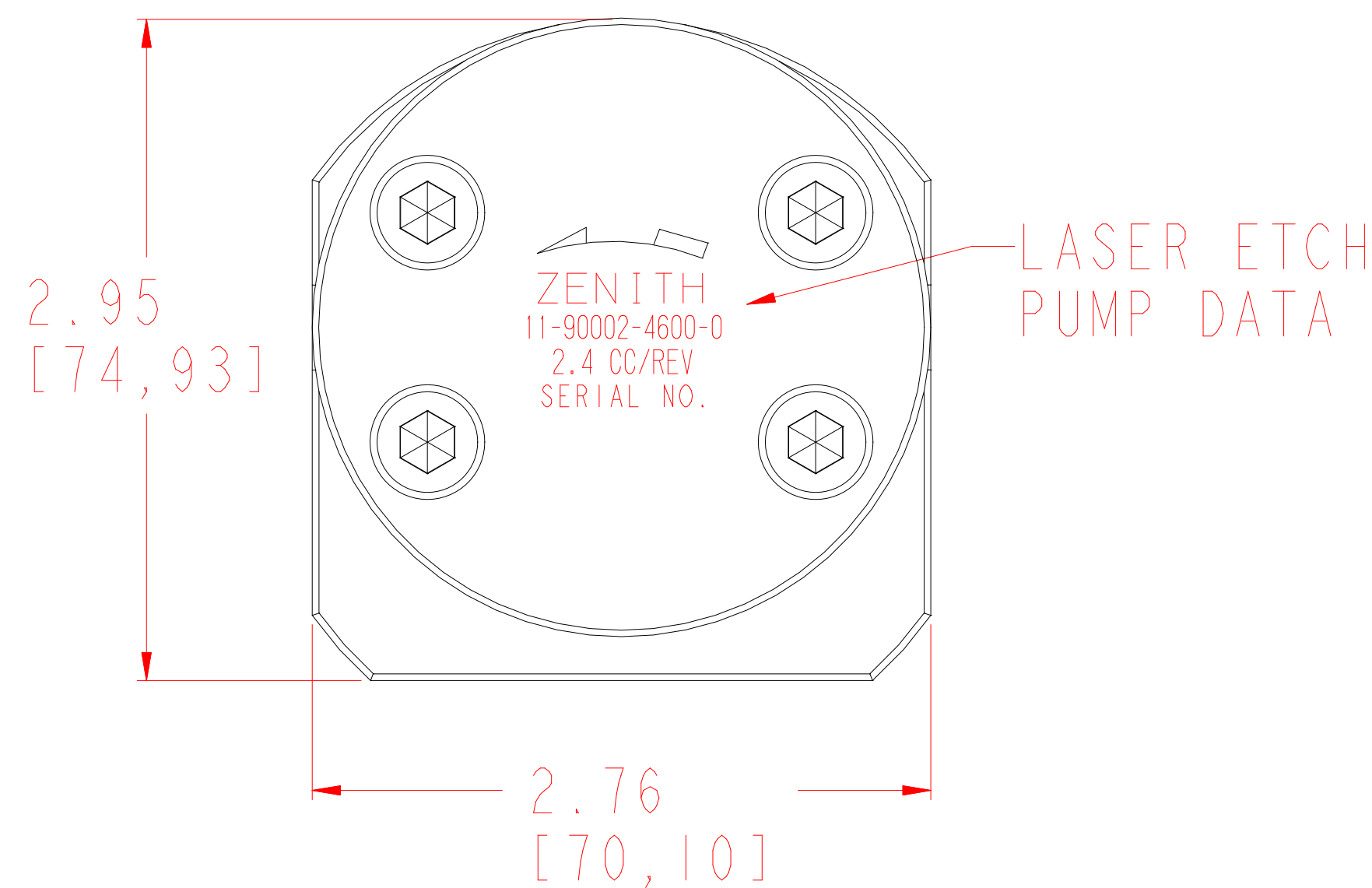


TORQUE SPECIFICATION FOR M4 SHCS
31 IN-LB (LUBRICATED) OR 41 IN-LB (NON-LUBRICATED)

TORQUE SPECIFICATION FOR M8 SHCS
262 IN-LB (LUBRICATED) OR 345 IN-LB (NON-LUBRICATED)

REVISIONS			
LTR	DESCRIPTION	DATE	ECN NO.
E	DOWEL WAS 15-16091-0032-1	9/22/04	321-2004

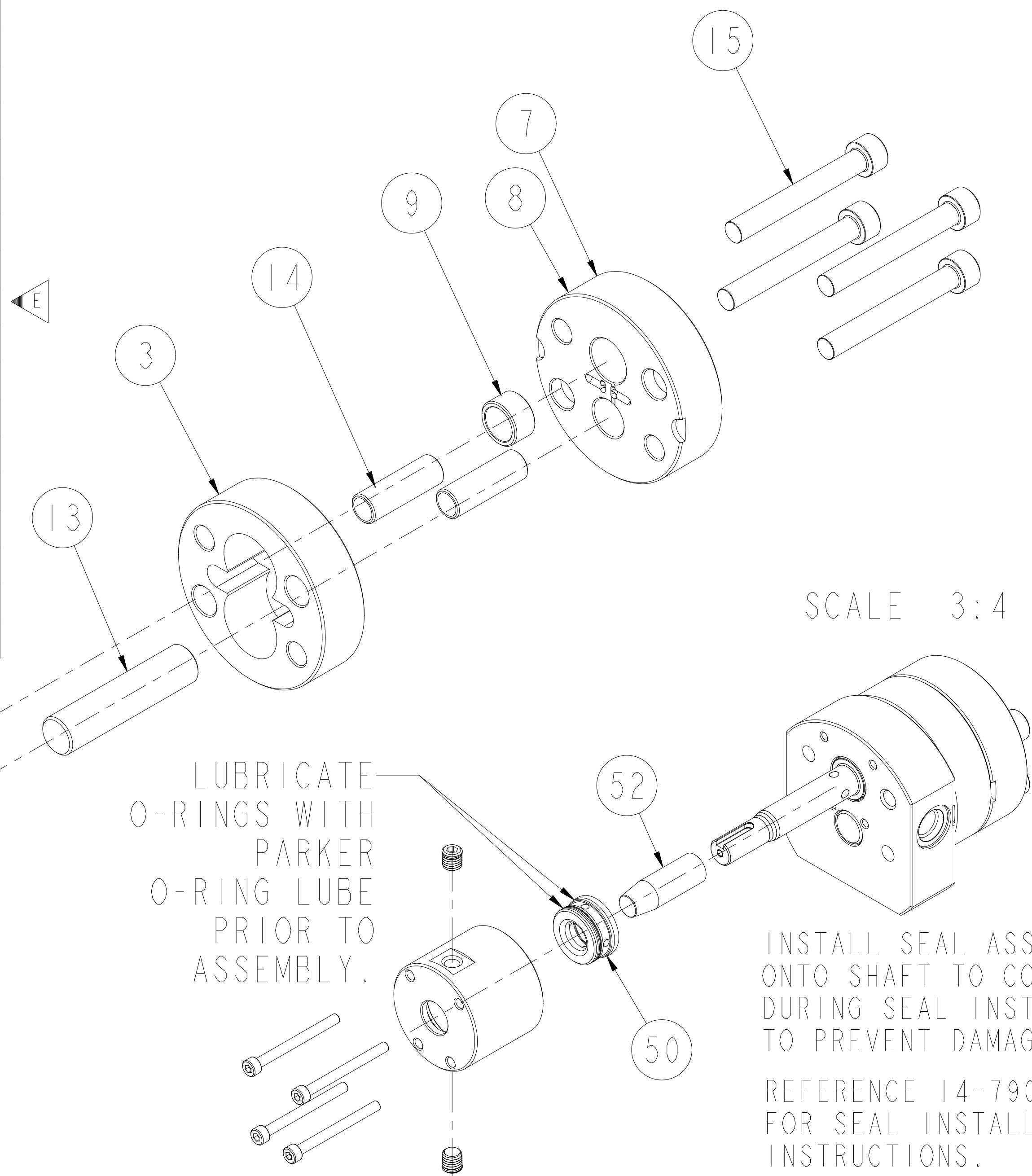


INTERPRET PER ASME-Y14.5M 1994

<p>THIS DOCUMENT CONTAINS INFORMATION THAT IS CONFIDENTIAL AND PROPRIETARY TO ZENITH PUMPS, COLFAX CORPORATION "COLFAX". THIS DOCUMENT IS FURNISHED ON THE UNDERSTANDING THAT THE DOCUMENT AND THE INFORMATION IT CONTAINS WILL NOT BE COPIED OR DISCLOSED TO OTHERS OR USED FOR ANY PURPOSE OTHER THAN CONDUCTING BUSINESS WITH COLFAX, AND WILL BE RETURNED AND ALL FURTHER USE DISCONTINUED UPON REQUEST BY COLFAX.</p>	UNLESS OTHERWISE SPECIFIED DIMENSIONS ARE IN INCH TOLERANCES		DRAWN LG 7/30/97		<p>ZENITH PUMPS 5910 ELWIN BUCHANAN DRIVE SANFORD, NC 27330</p>
	.XX ± 0.01		CHECKED		
	.XXX ± 0.005		PART WEIGHT = LBS		
	ANG ± 0.5		SURFACE AREA = IN^2		
MATERIAL	SEE BILL OF MATERIAL ON SHEET 2 OF 2		MODEL NUMBER = 119000246000 DRAWING = 119000246000	PRO/ENGINEER DRAWING	SIZE D
			SCALE 3:2		DRAWING NUMBER
			SHEET 1 OF 2		11-90002-4600-0

ITEM No.	PART NUMBER	PART NAME	MATERIAL	QTY
	119000246000	H-9000 2.4 CC/REV RAN 600		1
2	157956800552	SHAFT, DRIVE	CPM-M4	1
3	156925100414	PLATE, GEAR	M2	1
4	155600200411	KEY, ROUND		1
5	152360000692	GEAR, DRIVING	CPM-M4 OR EQUIV.	1
7	146915100132	ASSEMBLY, REAR PLATE		1
8	156915100284	PLATE, REAR	M2	1
9	150451602741	BEARING, SLEEVE	CPM-M4	1
10	146945200132	ASSEMBLY, FRONT PLATE		1
11	156945200314	PLATE, FRONT	M2	1
12	150451602751	BEARING, SLEEVE	CPM-M4	1
13	150115600362	ARBOR	CPM-M4	1
6	152370000972	GEAR, DRIVEN	CPM-M4 OR EQUIV.	1
14	151609100751	DOWEL, HOLLOW	M2	2
15	187860810602	SHCS M8X1.25 X 60MM ALLOY 12.9		4
16	185600800061	KEY, SQUARE W/RND ENDS	STEEL 50-1K	1
17	181831800122	RING - RETAINING	PH 15-7 MO	1
18	155401900383	HOUSING, SEAL	440C	1
50	147900400012	SUB-ASSEMBLY, ASSY INSTRUCTION	SEE BILL OF MATERIALS	1
52	150013100642	SEAL ASSEMBLY TOOL	ACETAL COPOLYMER	1
51	187900401331	TANDEM LIP SEAL	CARB. FIBER FILLED PTFE	1
20	187300000071	PLUG, DRYSEAL TYPE	AUSTENITIC SS	2
21	187860410452	SHCS M4X0.7 X 45 MM GRADE 12.9		4

REVISIONS			
LTR	DESCRIPTION	DATE	ECN NO.
E	DOWEL WAS 15-16091-0032-1	9/22/04	321-2004



SCALE 3:4

LUBRICATE UNDERSIDE OF CAP & THREADS ON FASTENERS WITH ANTI-SEIZE COMPOUND PRIOR TO ASSEMBLY.

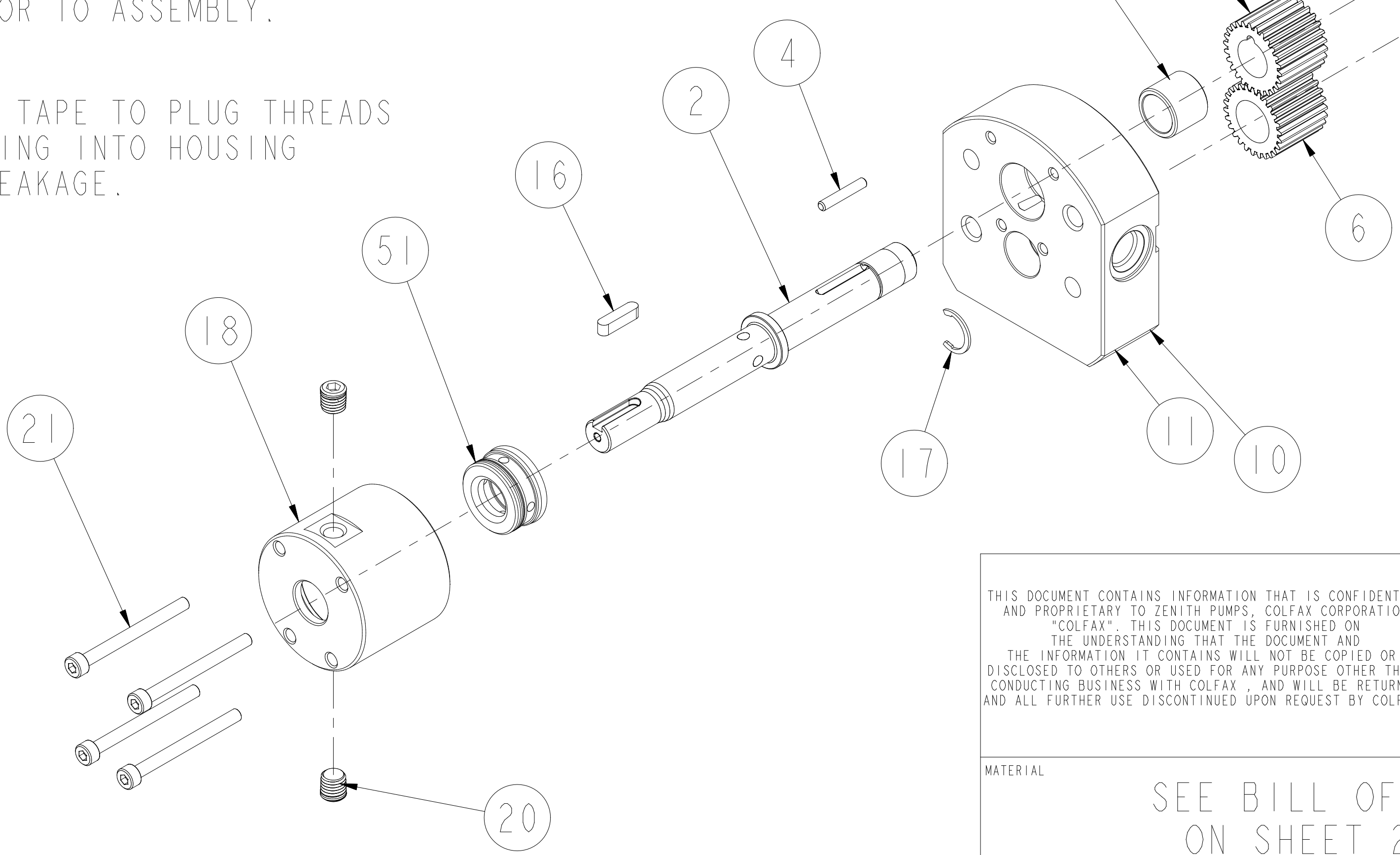
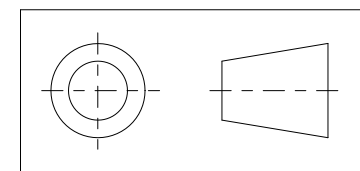
APPLY TEFLON TAPE TO PLUG THREADS WHEN ASSEMBLING INTO HOUSING TO PREVENT LEAKAGE.

LUBRICATE O-RINGS WITH PARKER O-RING LUBE PRIOR TO ASSEMBLY.

INSTALL SEAL ASSEMBLY TOOL ONTO SHAFT TO COVER KEYWAY DURING SEAL INSTALLATION, TO PREVENT DAMAGE.

REFERENCE 14-79004-0001-2 FOR SEAL INSTALLATION INSTRUCTIONS.

INTERPRET PER ASME-Y14.5M 1994



THIS DOCUMENT CONTAINS INFORMATION THAT IS CONFIDENTIAL AND PROPRIETARY TO ZENITH PUMPS, COLFAX CORPORATION "COLFAX". THIS DOCUMENT IS FURNISHED ON THE UNDERSTANDING THAT THE DOCUMENT AND THE INFORMATION IT CONTAINS WILL NOT BE COPIED OR DISCLOSED TO OTHERS OR USED FOR ANY PURPOSE OTHER THAN CONDUCTING BUSINESS WITH COLFAX, AND WILL BE RETURNED AND ALL FURTHER USE DISCONTINUED UPON REQUEST BY COLFAX.

UNLESS OTHERWISE SPECIFIED DIMENSIONS ARE IN INCH TOLERANCES
 .XX ± 0.01
 .XXX ± 0.005
 ANG ± 0.5

DRAWN LG 7/30/97
 CHECKED
 PART WEIGHT = LBS
 SURFACE AREA = IN^2

colfax Pump Group
ZENITH PUMPS
 5910 ELWIN BUCHANAN DRIVE
 SANFORD, NC 27330

MATERIAL SEE BILL OF MATERIAL ON SHEET 2 OF 2

MODEL NUMBER = 119000246000
 DRAWING = 119000246000
 PRO/ENGINEER DRAWING SIZE D

H-9000 2.4 CC/REV RAN 600
 SINGLE STREAM 2.4 CC/REV
 SCALE 7:8
 SHEET 2 OF 2
 DRAWING NUMBER 11-90002-4600-0