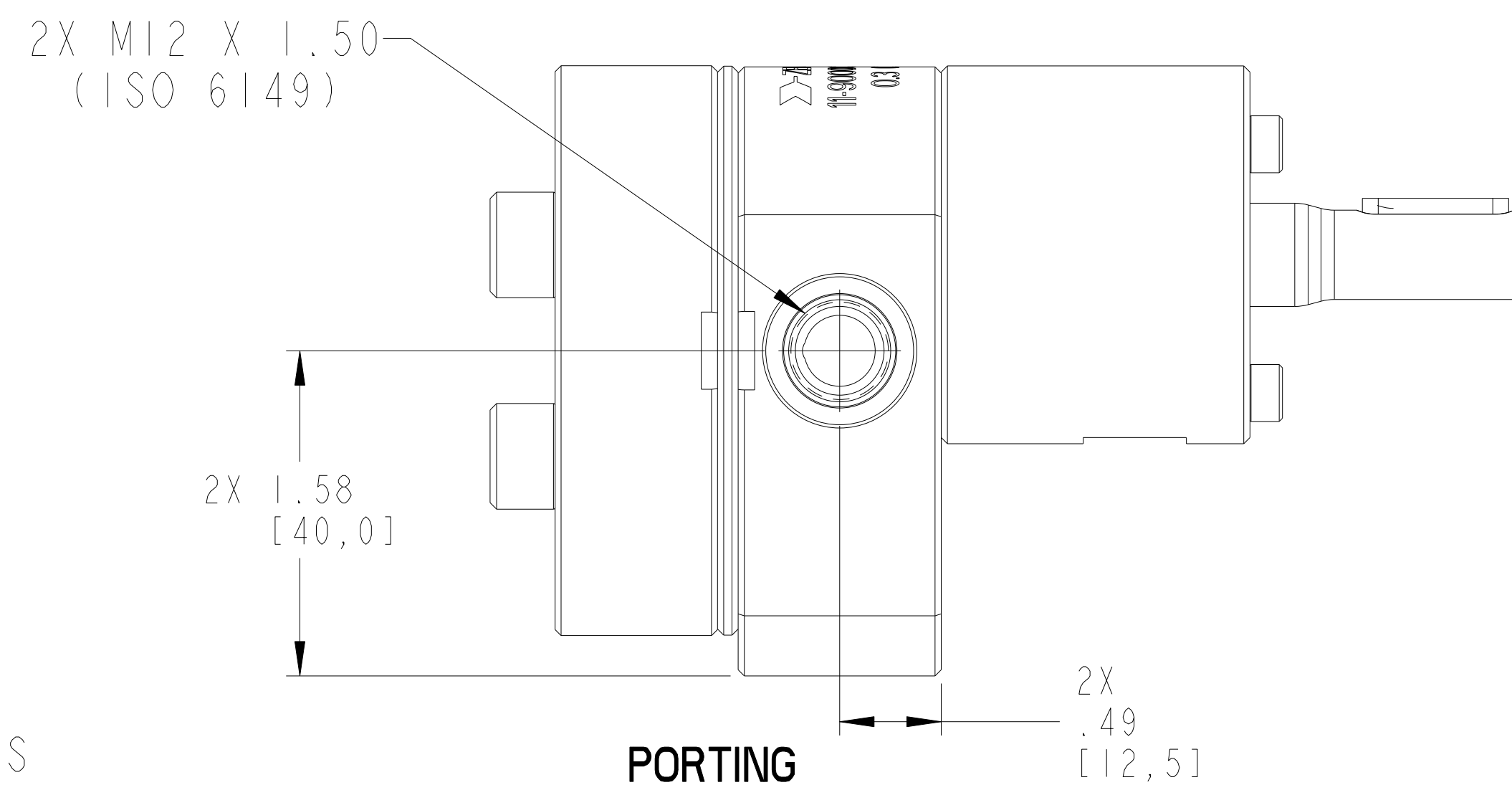
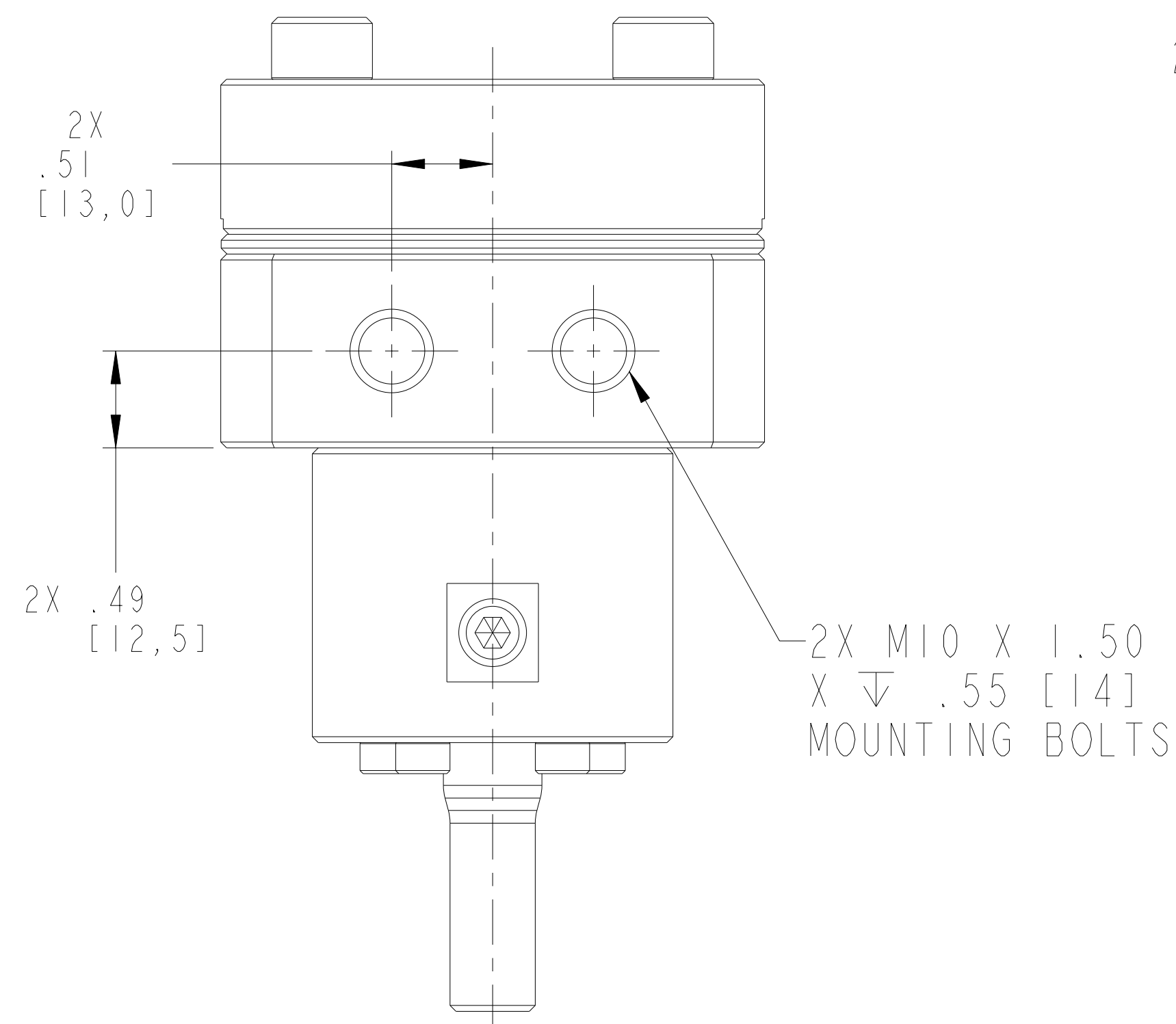
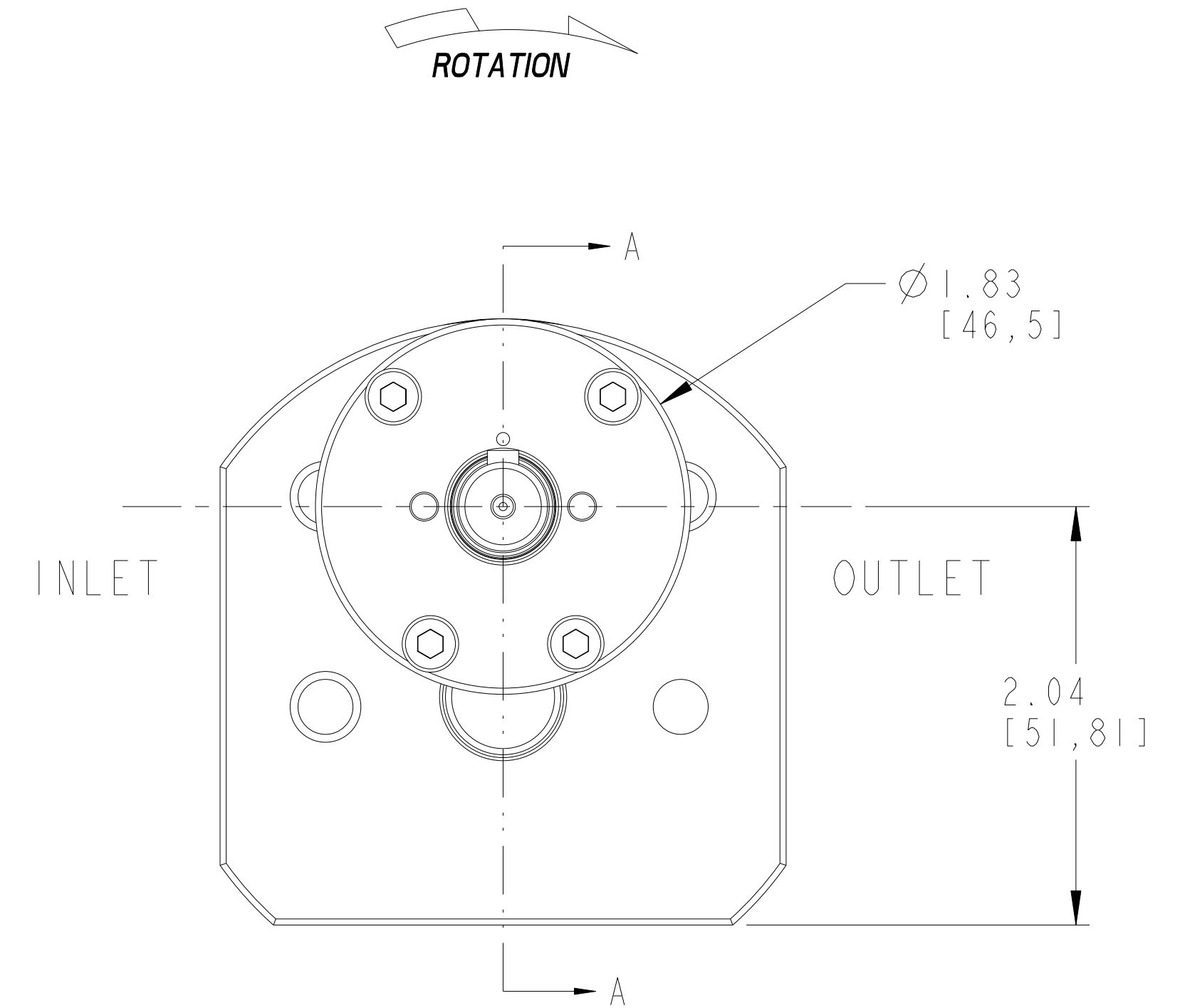
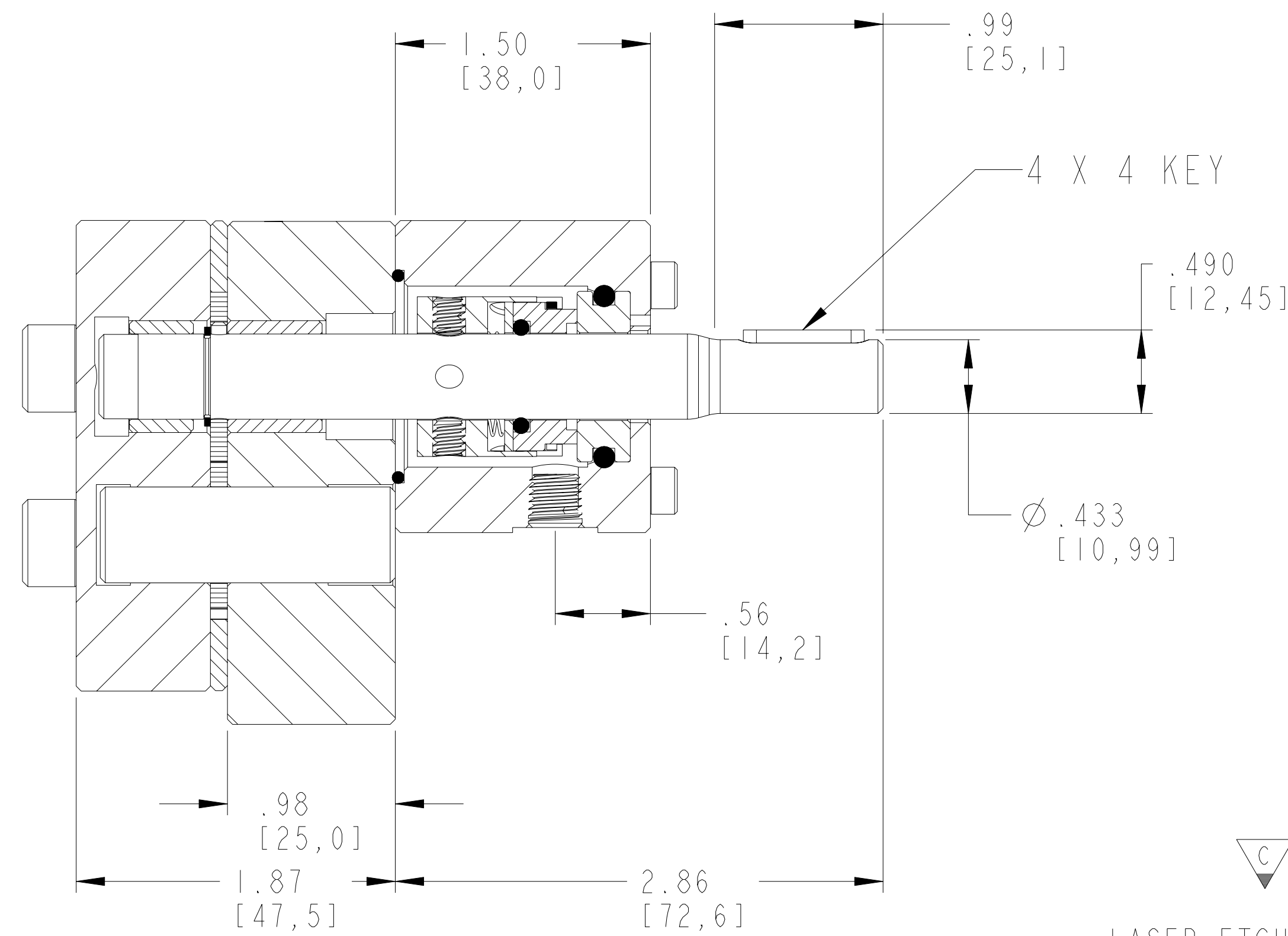
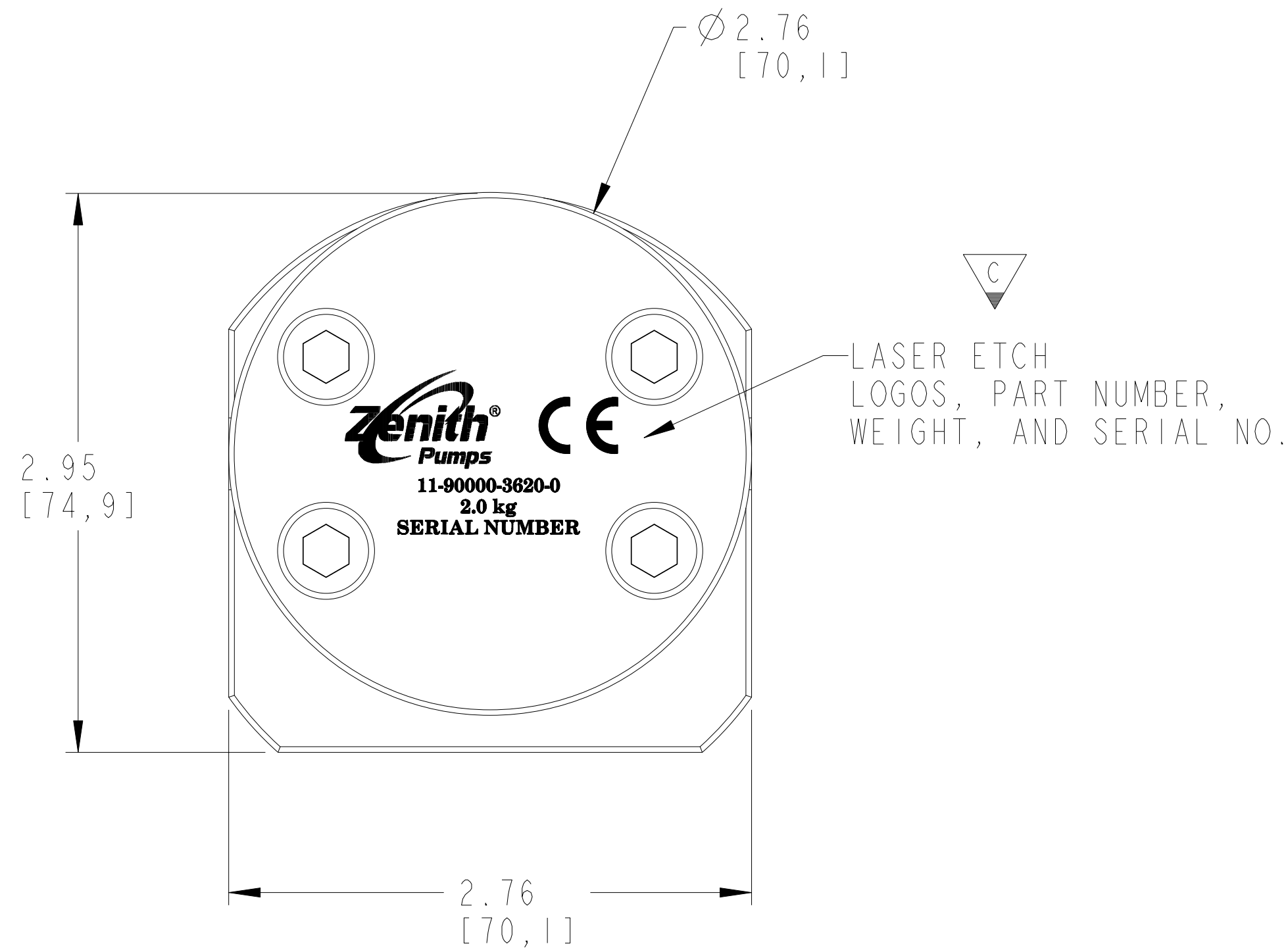


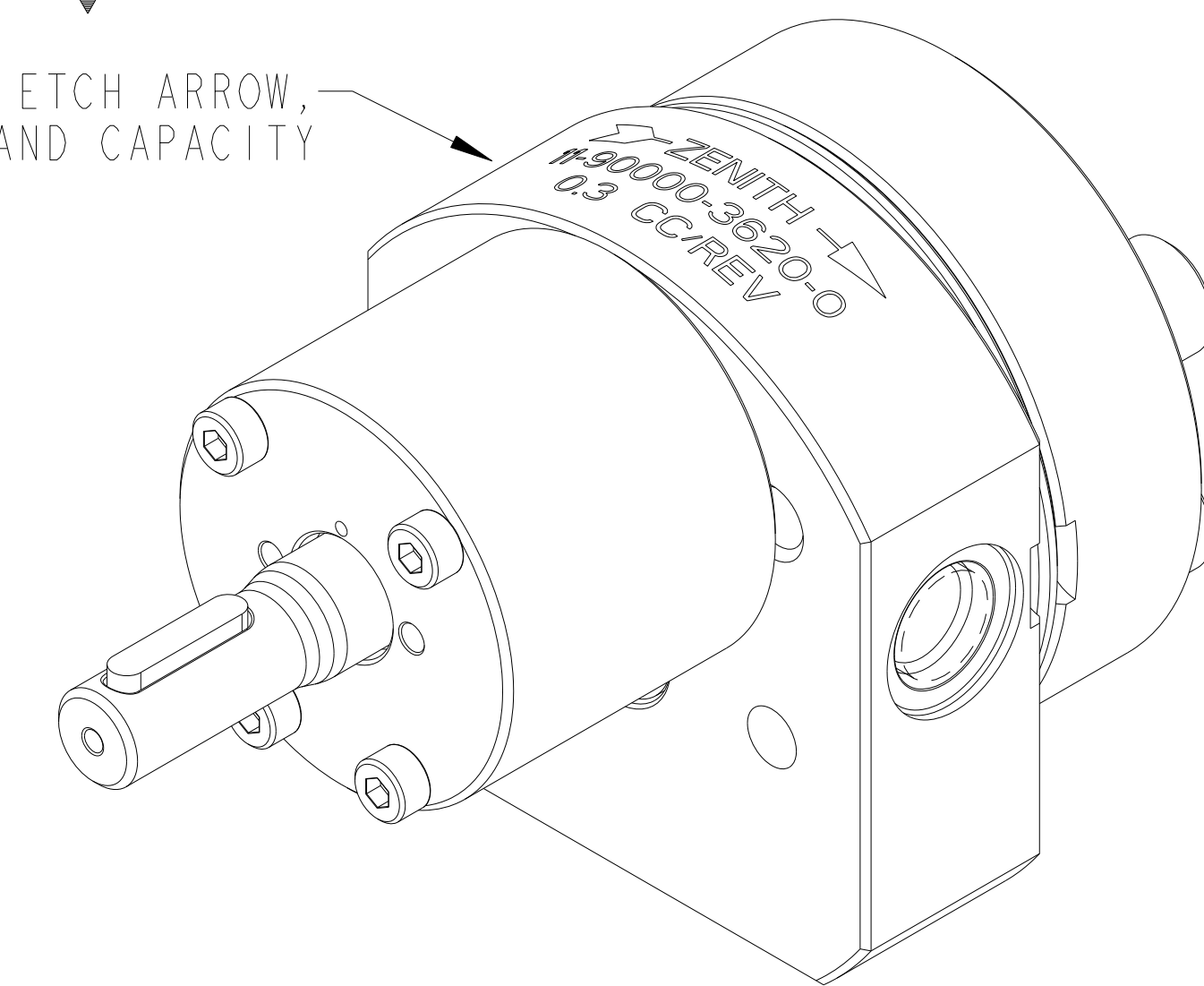
**BOLT TORQUE:**  
**M4 ALLOY BOLTS - LUBRICATED = 31 lb.-in.**  
**M8 ALLOY BOLTS - LUBRICATED = 262 lb.-in.**  
**M10 ALLOY BOLTS - LUBRICATED = 519 lb.-in.**

REVISIONS			
LTR	DESCRIPTION	DATE	ECN NO.
C	UPDATED SHAFT, PARTS LIST & ETCHING	10/20/10	107-2010

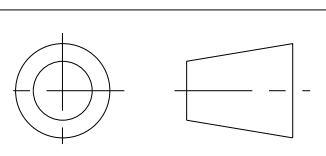
SECTION A-A




LASER ETCH ARROW,  
 PART NUMBER, AND CAPACITY



INTERPRET PER ASME-Y14.5M 1994



THIS DOCUMENT CONTAINS INFORMATION THAT IS CONFIDENTIAL AND PROPRIETARY TO ZENITH PUMPS, COLFAX CORPORATION "COLFAX". THIS DOCUMENT IS FURNISHED ON THE UNDERSTANDING THAT THE DOCUMENT AND THE INFORMATION IT CONTAINS WILL NOT BE COPIED OR DISCLOSED TO OTHERS OR USED FOR ANY PURPOSE OTHER THAN CONDUCTING BUSINESS WITH COLFAX, AND WILL BE RETURNED AND ALL FURTHER USE DISCONTINUED UPON REQUEST BY COLFAX.	UNLESS OTHERWISE SPECIFIED DIMENSIONS ARE IN INCH TOLERANCES		DRAWN PLC	10.22.01	 <b>ZENITH PUMPS</b> 1710 AIRPORT ROAD MONROE, NC 28110
	.XX ± 0.01	.XXX ± 0.005	ANG ± 0.5	CHECKED	
MATERIAL			PART WEIGHT =	LBS	
			MODEL NUMBER =	119000036200	H-9000-0.3-620
			DRAWING =	119000036200	W/MECHANICAL SEAL
			PRO/ENGINEER DRAWING	SIZE D	SCALE 3:2
					SHEET 1 OF 3
					DRAWING NUMBER
					11-90000-3620-0
					REV
					C

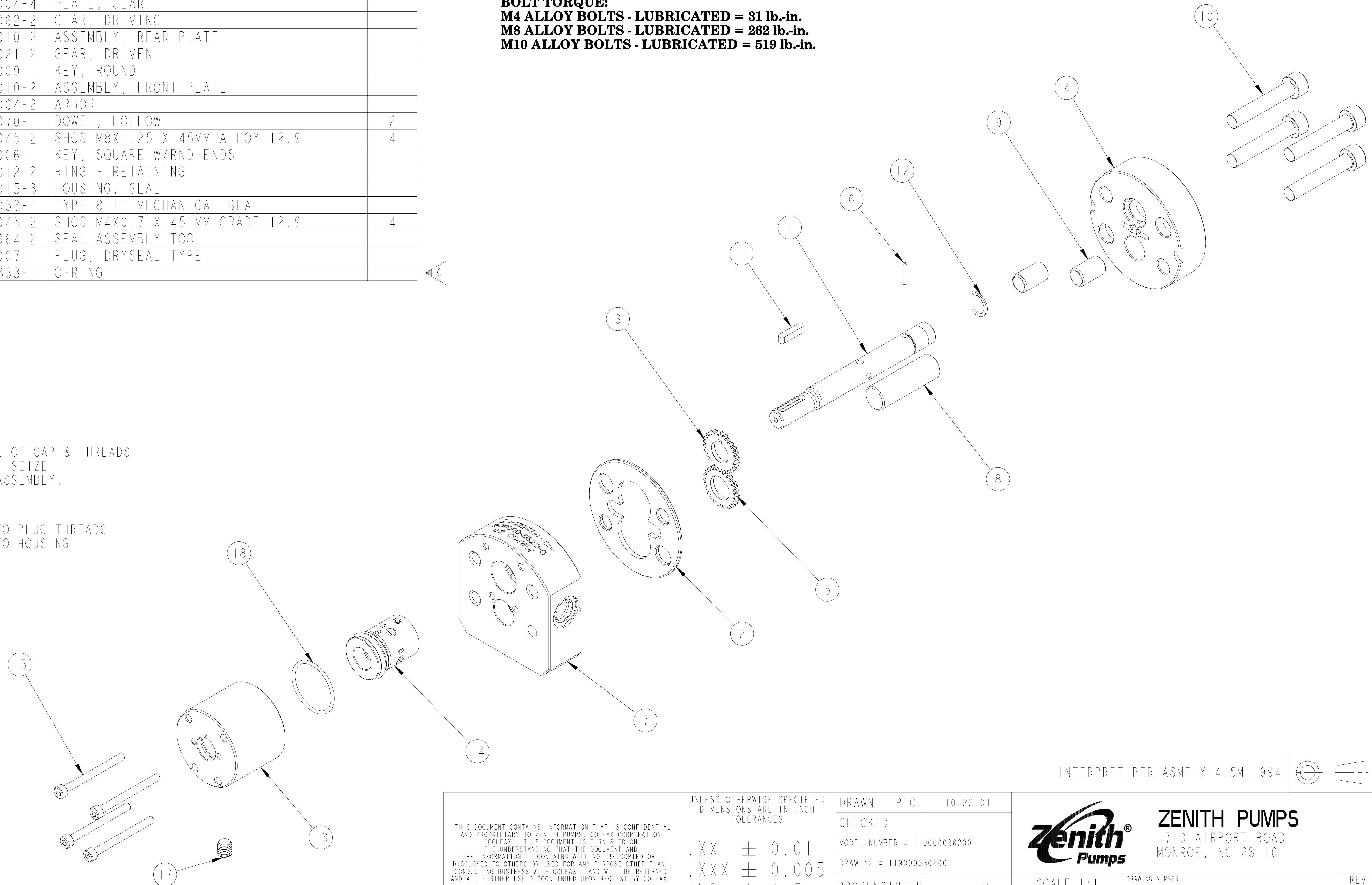
11-90000-3620-0 BILL OF MATERIAL

ITEM NO.	PART NUMBER	PART NAME	QTY
1	15-79568-0096-2	SHAFT, DRIVE	1
2	15-69251-0004-4	PLATE, GEAR	1
3	15-23605-0062-2	GEAR, DRIVING	1
4	14-69151-0010-2	ASSEMBLY, REAR PLATE	1
5	15-23705-0021-2	GEAR, DRIVEN	1
6	15-56002-0009-1	KEY, ROUND	1
7	14-69452-0010-2	ASSEMBLY, FRONT PLATE	1
8	15-01156-0004-2	ARBOR	1
9	15-16091-0070-1	DOWEL, HOLLOW	2
10	18-78608-1045-2	SHCS M8X1.25 X 45MM ALLOY 12.9	4
11	18-56008-0006-1	KEY, SQUARE W/RND ENDS	1
12	18-18318-0012-2	RING - RETAINING	1
13	15-54020-0015-3	HOUSING, SEAL	1
14	18-79003-0053-1	TYPE 8-IT MECHANICAL SEAL	1
15	18-78604-1045-2	SHCS M4X0.7 X 45 MM GRADE 12.9	4
16	15-00131-0064-2	SEAL ASSEMBLY TOOL	1
17	18-73000-0007-1	PLUG, DRYSEAL TYPE	1
18	18-76504-0333-1	O-RING	1

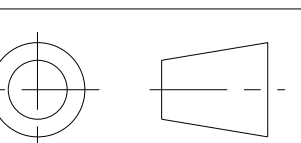
**BOLT TORQUE:**  
**M4 ALLOY BOLTS - LUBRICATED = 31 lb.-in.**  
**M8 ALLOY BOLTS - LUBRICATED = 262 lb.-in.**  
**M10 ALLOY BOLTS - LUBRICATED = 519 lb.-in.**

LUBRICATE UNDERSIDE OF CAP & THREADS  
 ON FASTENERS W/ANTI-SEIZE  
 COMPOUND PRIOR TO ASSEMBLY.

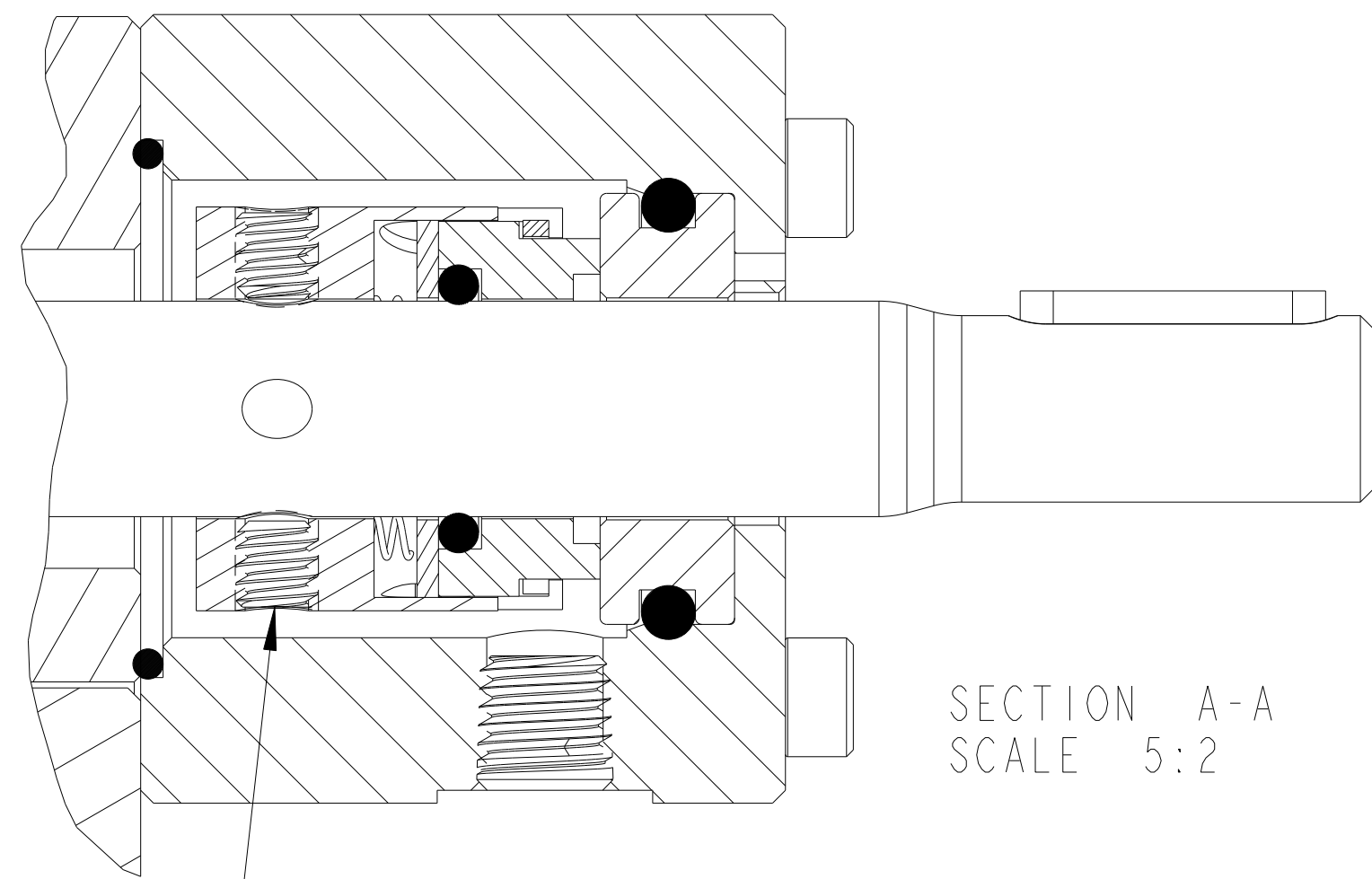
APPLY TEFLON TAPE TO PLUG THREADS  
 WHEN ASSEMBLING INTO HOUSING  
 TO PREVENT LEAKAGE.



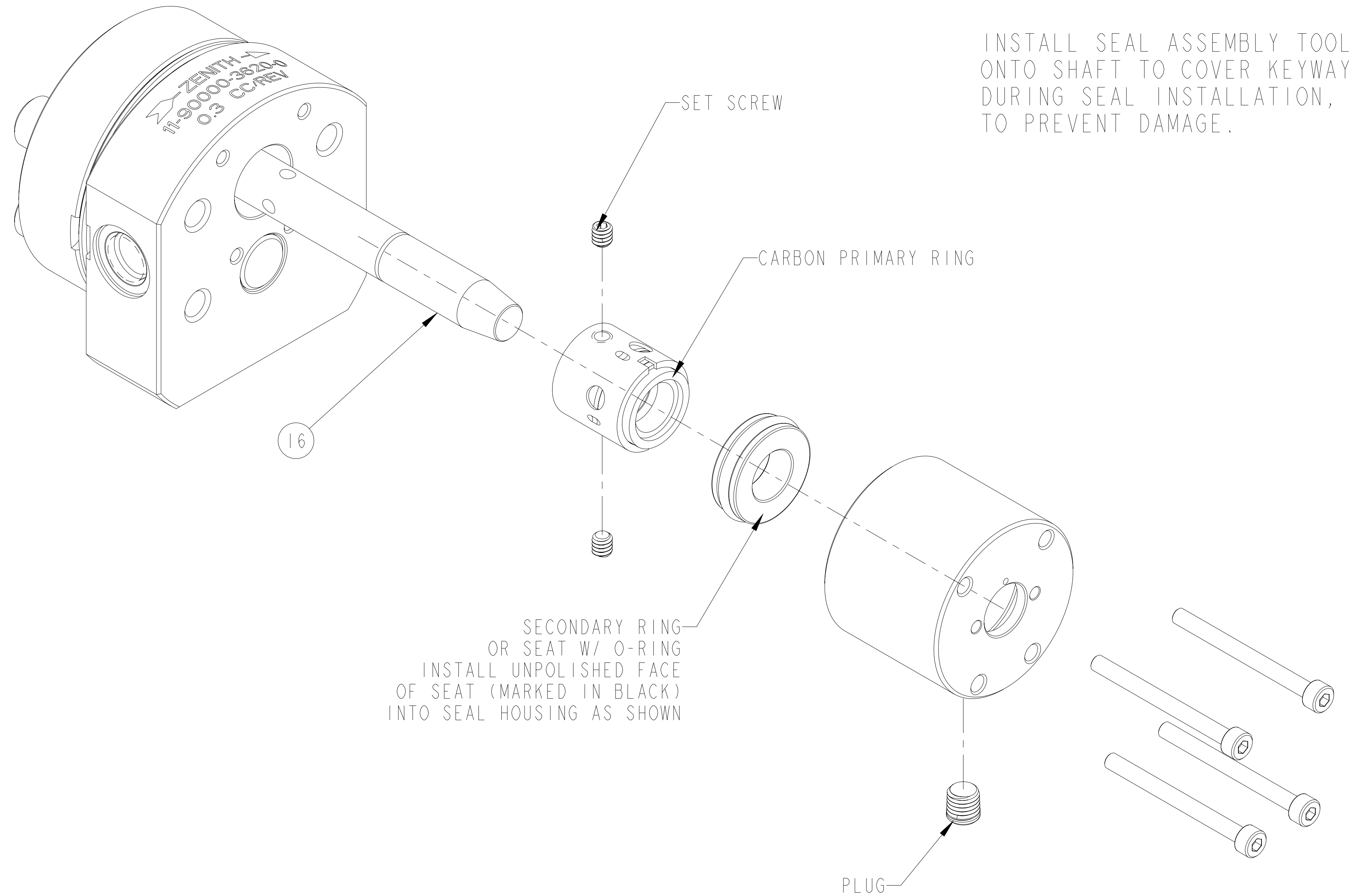
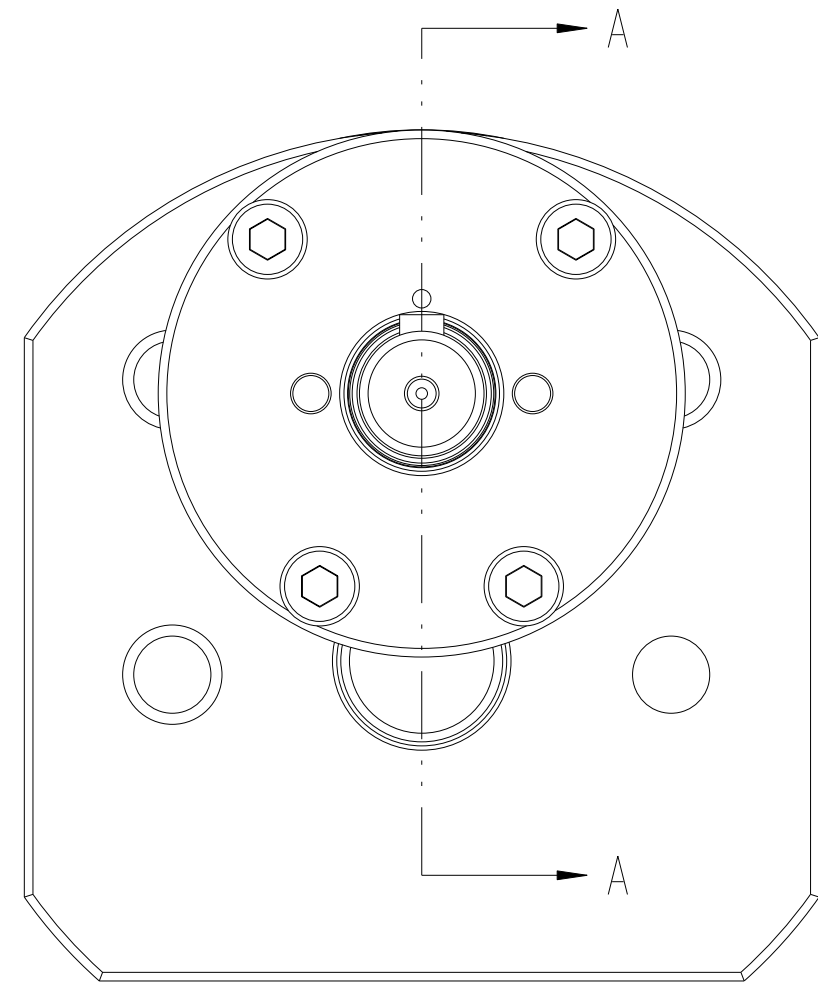
INTERPRET PER ASME-Y14.5M 1994



THIS DOCUMENT CONTAINS INFORMATION THAT IS CONFIDENTIAL AND PROPRIETARY TO ZENITH PUMPS, COLFAX CORPORATION "COLFAX". THIS DOCUMENT IS FURNISHED ON THE UNDERSTANDING THAT THE DOCUMENT AND THE INFORMATION IT CONTAINS WILL NOT BE COPIED OR DISCLOSED TO OTHERS OR USED FOR ANY PURPOSE OTHER THAN CONDUCTING BUSINESS WITH COLFAX, AND WILL BE RETURNED AND ALL FURTHER USE DISCONTINUED UPON REQUEST BY COLFAX.	UNLESS OTHERWISE SPECIFIED DIMENSIONS ARE IN INCH TOLERANCES		DRAWN PLC 10.22.01 CHECKED MODEL NUMBER = 119000036200 DRAWING = 119000036200	ZENITH PUMPS 1710 AIRPORT ROAD MONROE, NC 28110	SCALE 1:1 SHEET 2 OF 3	DRAWING NUMBER 11-90000-3620-0	REV C
	.XX ± 0.01	.XXX ± 0.005	PRO/ENGINEER DRAWING SIZE D				
	ANG ± 0.5						



ALIGN SET SCREWS  
WITH DEPRESSIONS  
IN DRIVE SHAFT

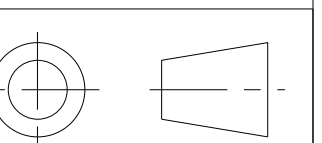


LUBRICATE UNDERSIDE OF CAP & THREADS  
ON FASTENERS WITH ANTI-SEIZE  
COMPOUND PRIOR TO ASSEMBLY.

LUBRICATE ALL O-RINGS ON LIP SEAL  
WITH PARKER O-RING LUBE OR  
EQUIVALENT, PRIOR TO INSTALLING  
INTO HOUSING.

APPLY TEFLON TAPE TO PLUG THREADS  
WHEN ASSEMBLING INTO HOUSING  
TO PREVENT LEAKAGE.

INTERPRET PER ASME-Y14.5M 1994



<p>THIS DOCUMENT CONTAINS INFORMATION THAT IS CONFIDENTIAL AND PROPRIETARY TO ZENITH PUMPS, COLFAX CORPORATION "COLFAX". THIS DOCUMENT IS FURNISHED ON THE UNDERSTANDING THAT THE DOCUMENT AND THE INFORMATION IT CONTAINS WILL NOT BE COPIED OR DISCLOSED TO OTHERS OR USED FOR ANY PURPOSE OTHER THAN CONDUCTING BUSINESS WITH COLFAX, AND WILL BE RETURNED AND ALL FURTHER USE DISCONTINUED UPON REQUEST BY COLFAX.</p>	<p>UNLESS OTHERWISE SPECIFIED DIMENSIONS ARE IN INCH TOLERANCES</p>	<p>DRAWN PLC 10.22.01</p>	<p><b>ZENITH PUMPS</b> 1710 AIRPORT ROAD MONROE, NC 28110</p>		<p>REV C</p>
	<p>.XX ± 0.01 .XXX ± 0.005 ANG ± 0.5</p>	<p>CHECKED</p>			
			<p>DRAWING = 119000036200</p>	<p>SCALE 3:2</p>	<p>DRAWING NUMBER</p>
			<p>PRO/ENGINEER DRAWING</p>	<p>SIZE D</p>	<p>SHEET 3 OF 3</p>