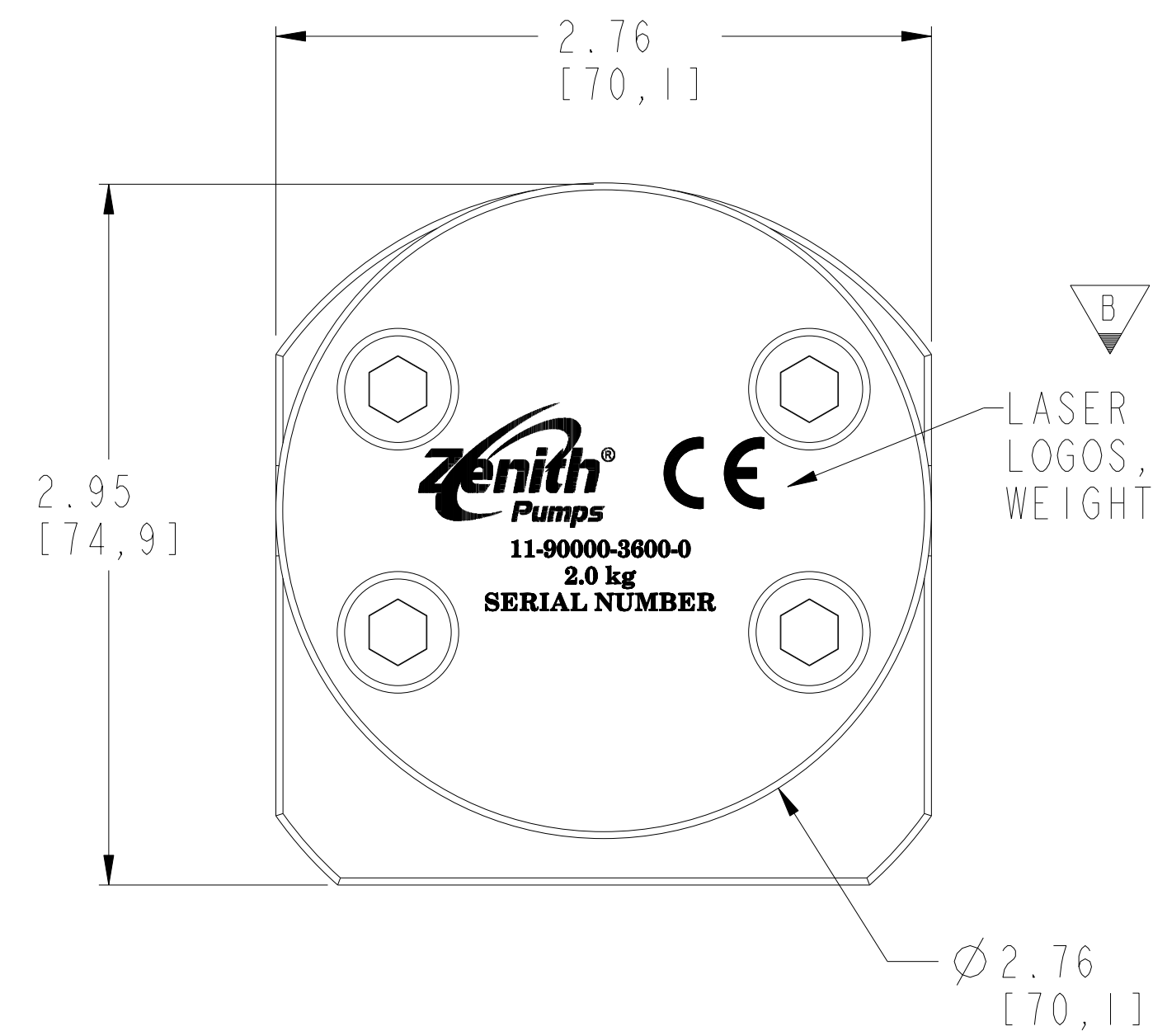
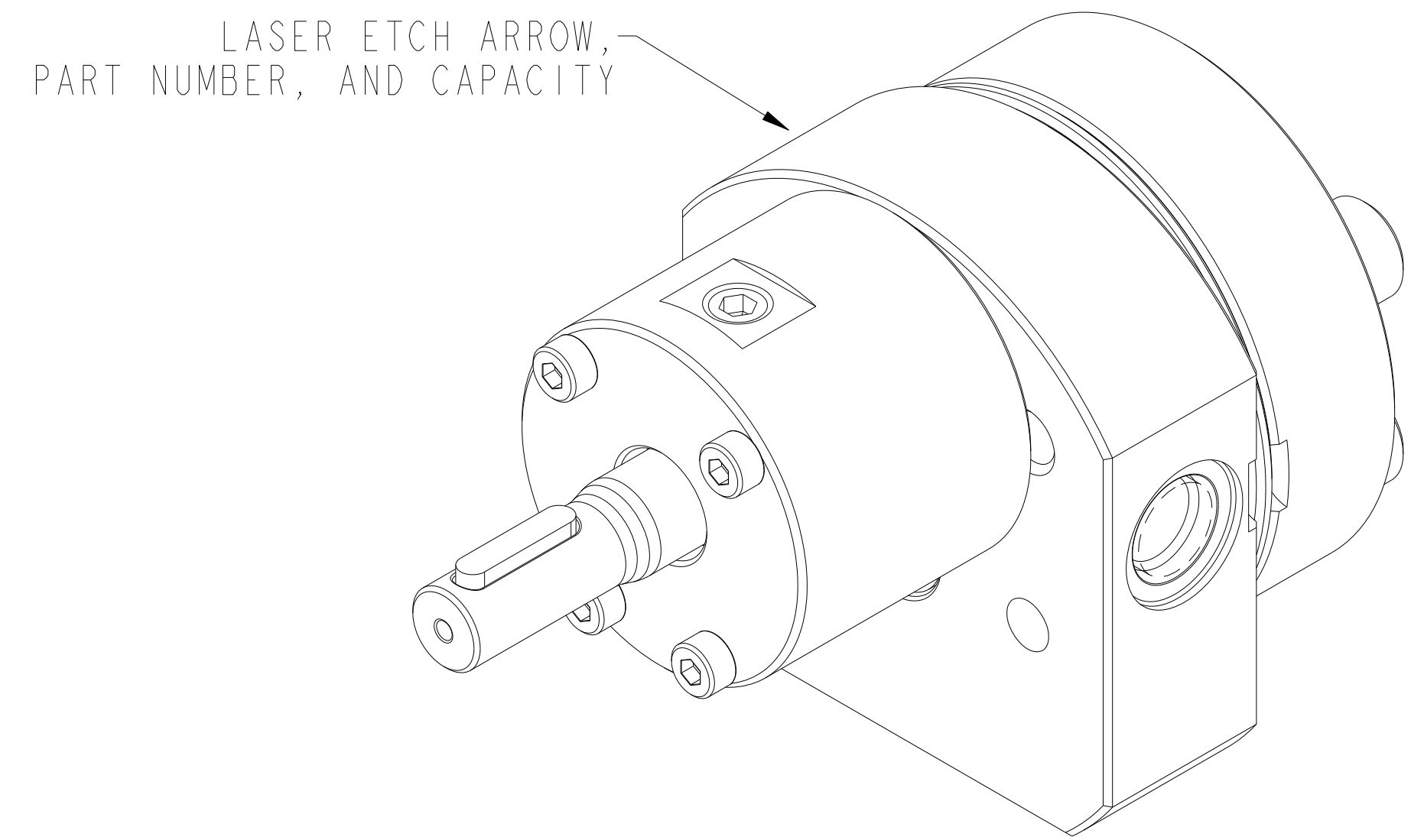
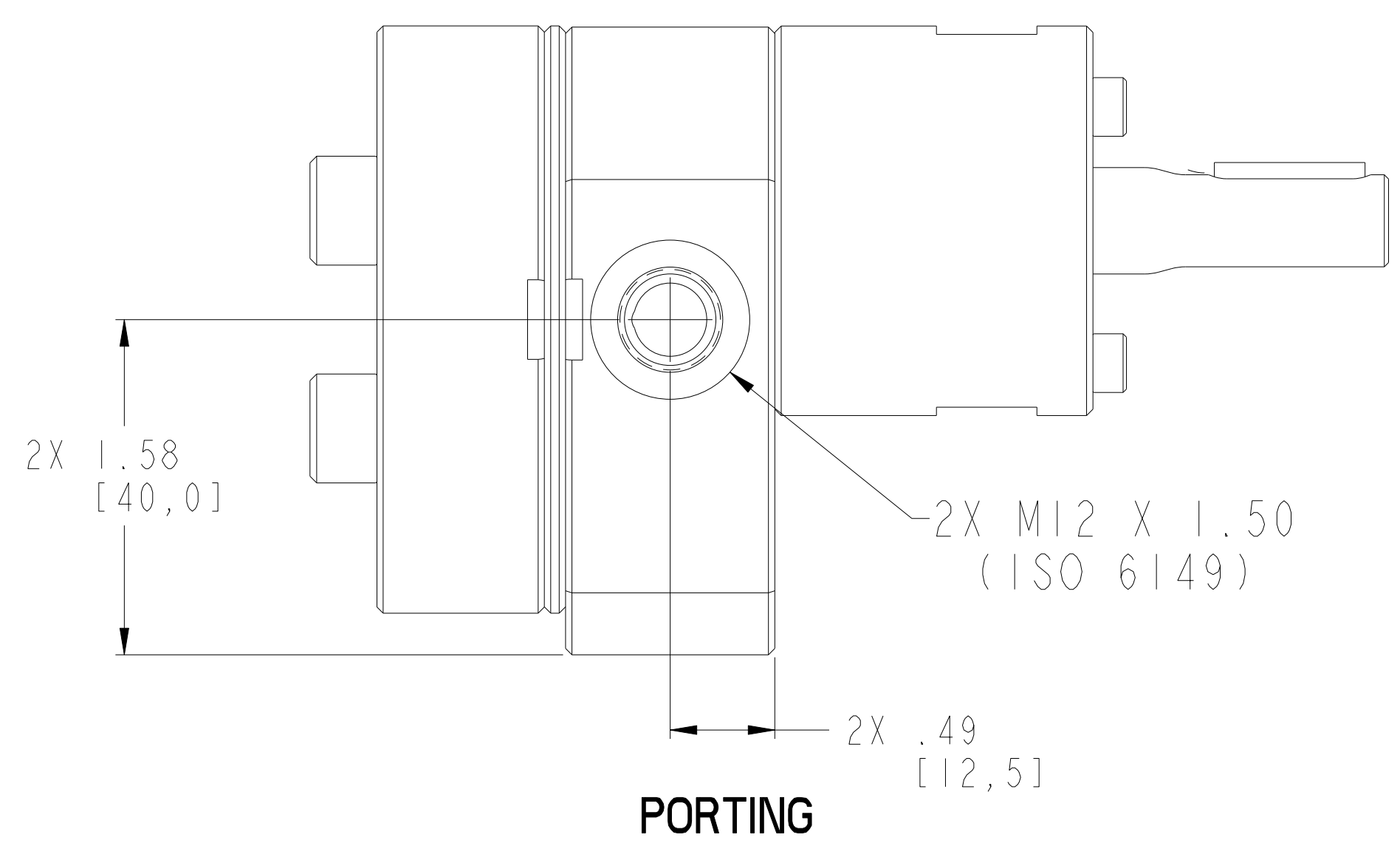
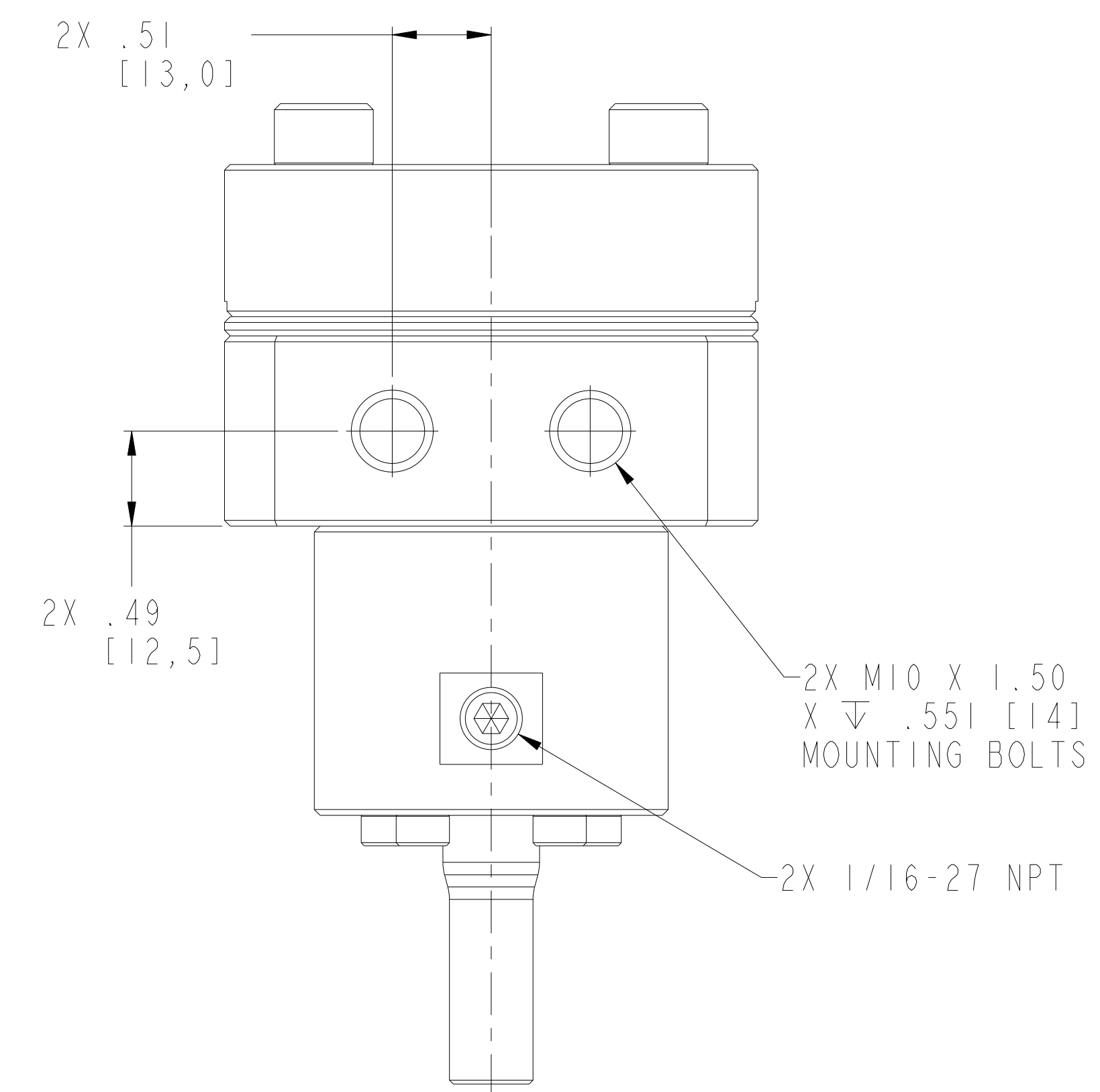
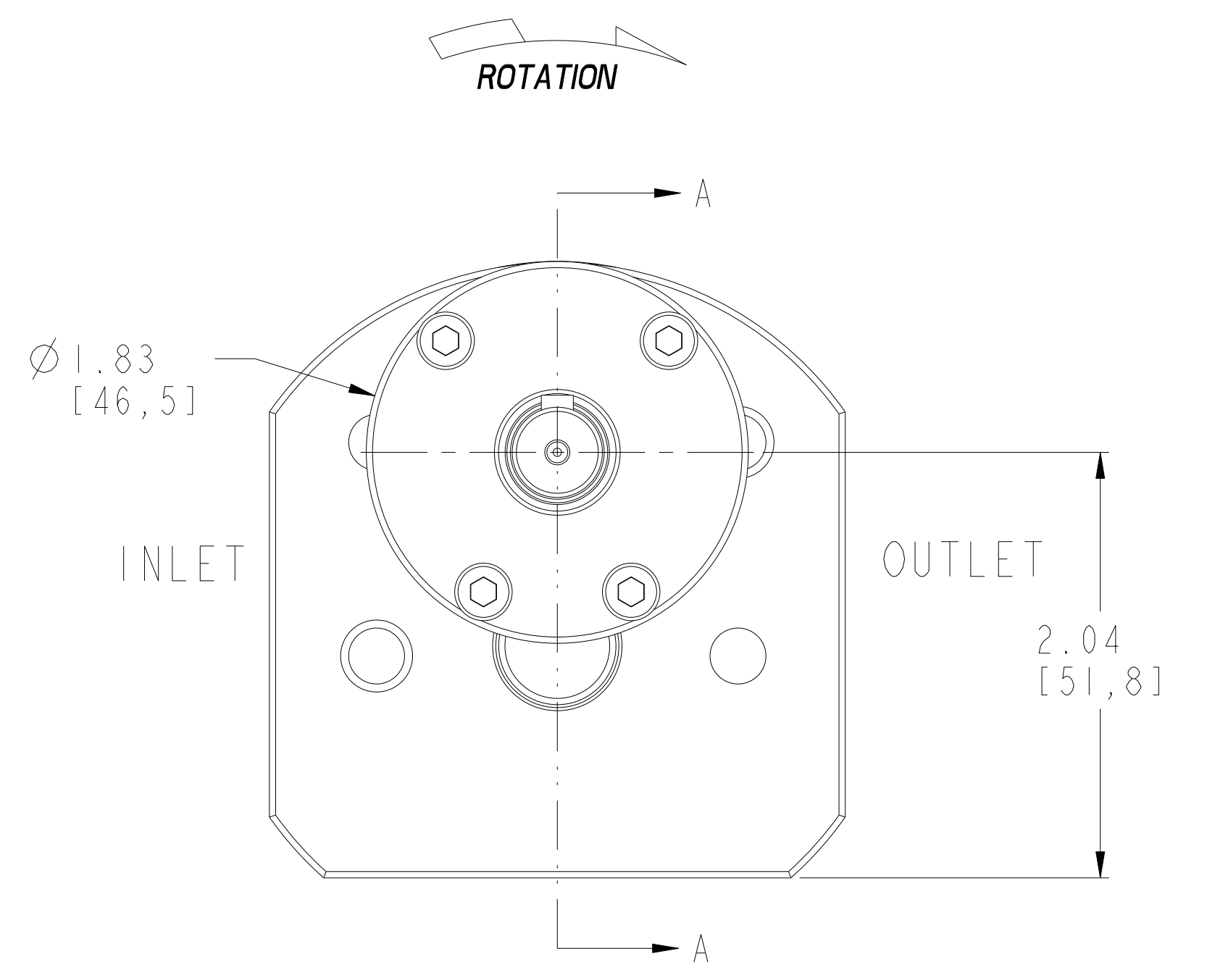
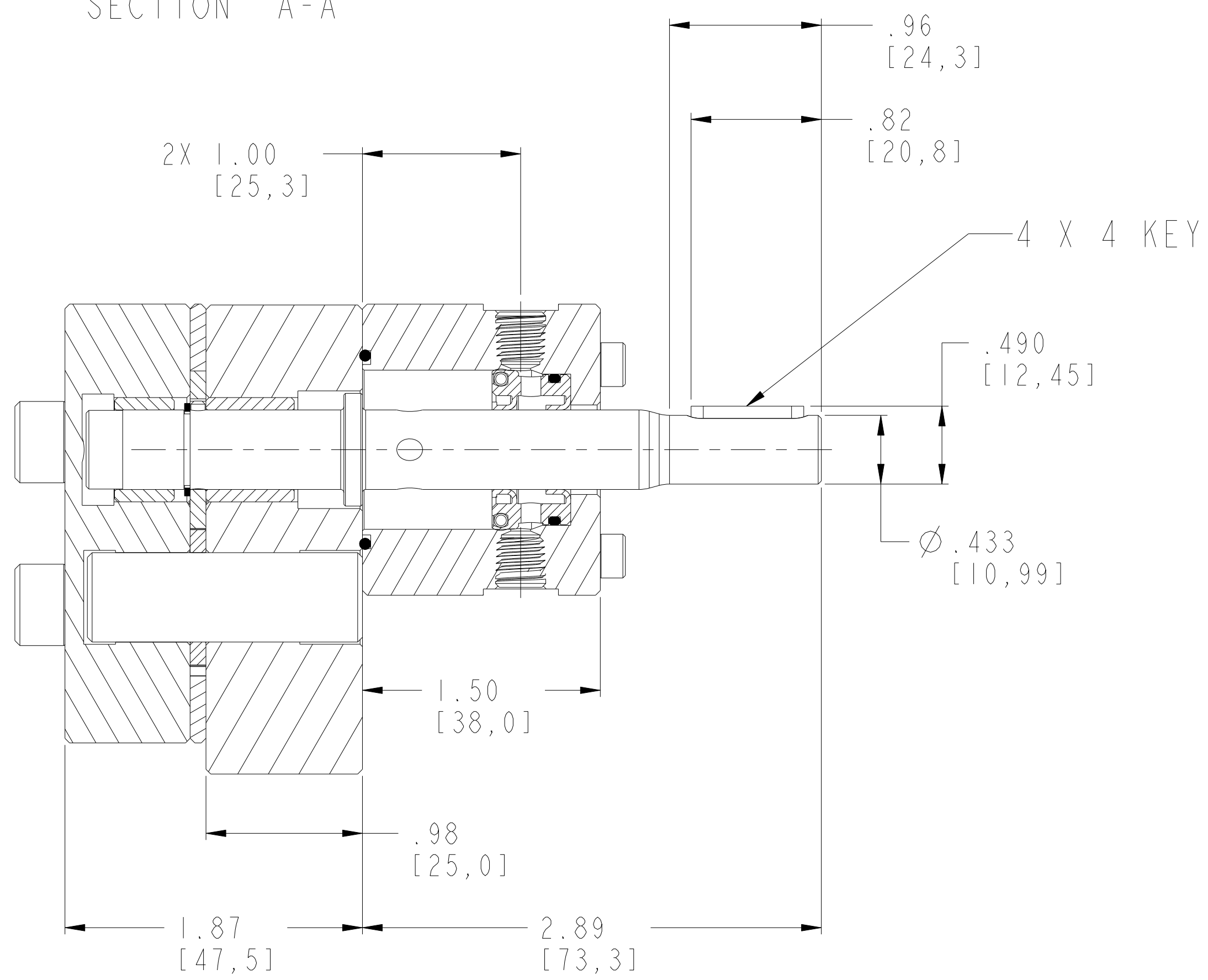


**BOLT TORQUE:**  
**M4 ALLOY BOLTS - LUBRICATED = 31 lb.-in.**  
**M8 ALLOY BOLTS - LUBRICATED = 262 lb.-in.**  
**M10 ALLOY BOLTS - LUBRICATED = 519 lb.-in.**

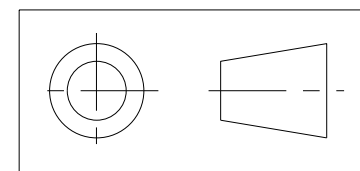
REVISIONS			
LTR	DESCRIPTION	DATE	ECN NO.
B	UPDATED SHAFT, PARTS LIST & ETCHING	10/14/10	107-2010



SECTION A-A



INTERPRET PER ASME-Y14.5M 1994

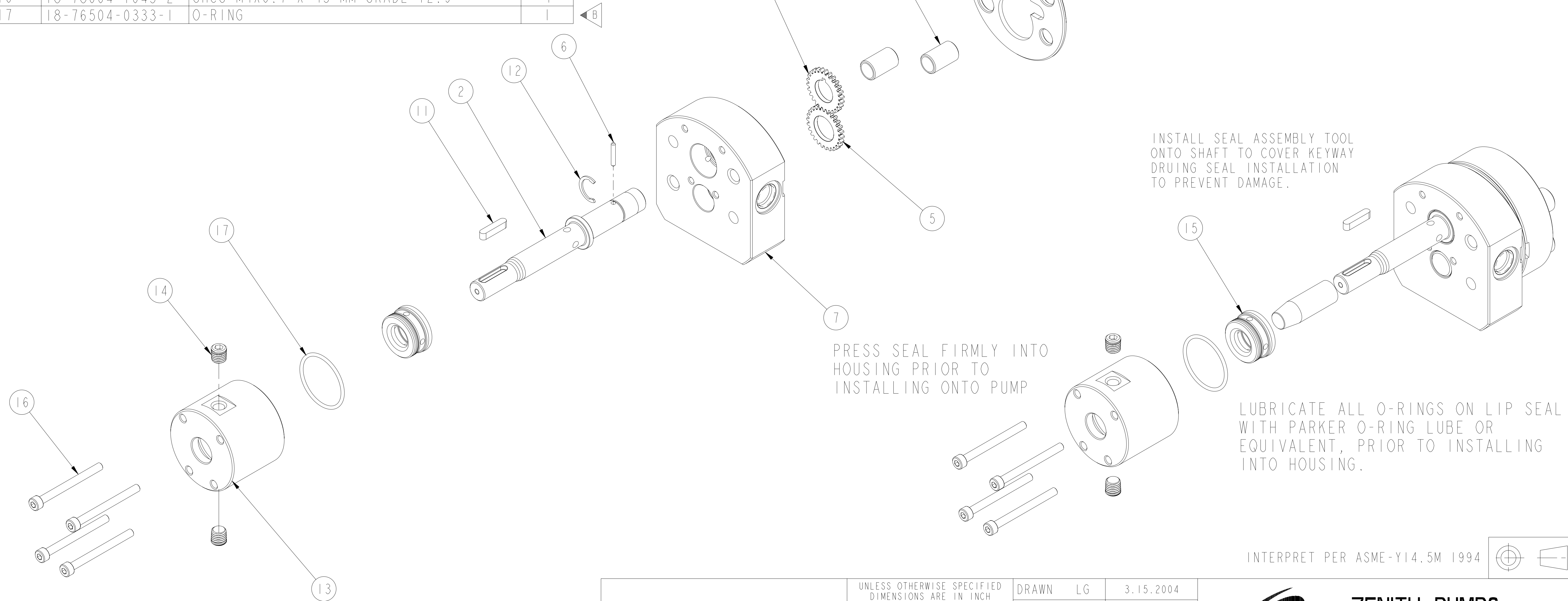


<p>THIS DOCUMENT CONTAINS INFORMATION THAT IS CONFIDENTIAL AND PROPRIETARY TO ZENITH PUMPS, COLFAX CORPORATION "COLFAX". THIS DOCUMENT IS FURNISHED ON THE UNDERSTANDING THAT THE DOCUMENT AND THE INFORMATION IT CONTAINS WILL NOT BE COPIED OR DISCLOSED TO OTHERS OR USED FOR ANY PURPOSE OTHER THAN CONDUCTING BUSINESS WITH COLFAX, AND WILL BE RETURNED AND ALL FURTHER USE DISCONTINUED UPON REQUEST BY COLFAX.</p>	<p>UNLESS OTHERWISE SPECIFIED DIMENSIONS ARE IN INCH TOLERANCES</p> <p>.XX ± 0.01          .XXX ± 0.005          ANG ± 0.5</p>	<p>DRAWN LG 3.15.2004</p>	<p><b>ZENITH PUMPS</b>          1710 AIRPORT ROAD          MONROE, NC 28110</p>	
		<p>CHECKED LGG 3.15.2004</p>		
<p>MATERIAL</p>	<p>PRO/ENGINEER DRAWING</p>	<p>PART WEIGHT = LBS</p>	<p>H-9000-0.3-600          SINGLE STREAM 0.3 CC/REV</p>	
		<p>MODEL NUMBER = 119000036000</p>		
<p>SIZE D</p>		<p>SHEET 1 OF 2</p>	<p>11-90000-3600-0</p>	<p>B</p>

11-90000-3600-0 BILL OF MATERIAL

ITEM NO.	PART NUMBER	PART NAME	QTY
1	15-69251-0077-1	PLATE, GEAR	1
2	15-79568-0131-1	SHAFT, DRIVE	1
3	15-23605-0062-2	GEAR, DRIVING	1
4	14-69151-0013-2	ASSEMBLY, REAR PLATE	1
5	15-23705-0021-2	GEAR, DRIVEN	1
6	15-56002-0009-1	KEY, ROUND	1
7	14-69452-0013-2	ASSEMBLY, FRONT PLATE	1
8	15-01156-0079-1	ARBOR	1
9	15-16091-0074-1	DOWEL, HOLLOW	2
10	18-78608-1045-2	SHCS M8X1.25 X 45MM ALLOY 12.9	4
11	18-56008-0006-1	KEY, SQUARE W/RND ENDS	1
12	18-18318-0012-2	RING - RETAINING	1
13	15-54019-0038-3	HOUSING, SEAL	1
14	18-73000-0007-1	PLUG, DRYSEAL TYPE	2
15	14-79004-0001-2	SUB-ASSEMBLY, ASSY INSTRUCTION	1
16	18-78604-1045-2	SHCS M4X0.7 X 45 MM GRADE 12.9	4
17	18-76504-0333-1	O-RING	1

**BOLT TORQUE:**  
**M4 ALLOY BOLTS - LUBRICATED = 31 lb.-in.**  
**M8 ALLOY BOLTS - LUBRICATED = 262 lb.-in.**  
**M10 ALLOY BOLTS - LUBRICATED = 519 lb.-in.**

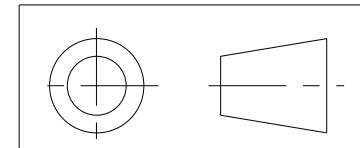


INSTALL SEAL ASSEMBLY TOOL ONTO SHAFT TO COVER KEYWAY DURING SEAL INSTALLATION TO PREVENT DAMAGE.

PRESS SEAL FIRMLY INTO HOUSING PRIOR TO INSTALLING ONTO PUMP

LUBRICATE ALL O-RINGS ON LIP SEAL WITH PARKER O-RING LUBE OR EQUIVALENT, PRIOR TO INSTALLING INTO HOUSING.

INTERPRET PER ASME-Y14.5M 1994



<p>THIS DOCUMENT CONTAINS INFORMATION THAT IS CONFIDENTIAL AND PROPRIETARY TO ZENITH PUMPS, COLFAX CORPORATION "COLFAX". THIS DOCUMENT IS FURNISHED ON THE UNDERSTANDING THAT THE DOCUMENT AND THE INFORMATION IT CONTAINS WILL NOT BE COPIED OR DISCLOSED TO OTHERS OR USED FOR ANY PURPOSE OTHER THAN CONDUCTING BUSINESS WITH COLFAX, AND WILL BE RETURNED AND ALL FURTHER USE DISCONTINUED UPON REQUEST BY COLFAX.</p>	<p>UNLESS OTHERWISE SPECIFIED DIMENSIONS ARE IN INCH TOLERANCES</p>	<p>DRAWN LG 3.15.2004</p>	<p><b>ZENITH PUMPS</b>                  1710 AIRPORT ROAD                  MONROE, NC 28110</p>	<p>SCALE 1:1</p>	<p>DRAWING NUMBER</p>	<p>REV</p>	
	<p>.XX ± 0.01                  .XXX ± 0.005                  ANG ± 0.5</p>	<p>CHECKED LGG 3.15.2004</p>					<p>MODEL NUMBER = 119000036000</p>
			<p>DRAWING = 119000036000</p>	<p>PRO/ENGINEER DRAWING</p>	<p>SIZE D</p>	<p>11-90000-3600-0</p>	<p>B</p>
					<p>SHEET 2 OF 2</p>		