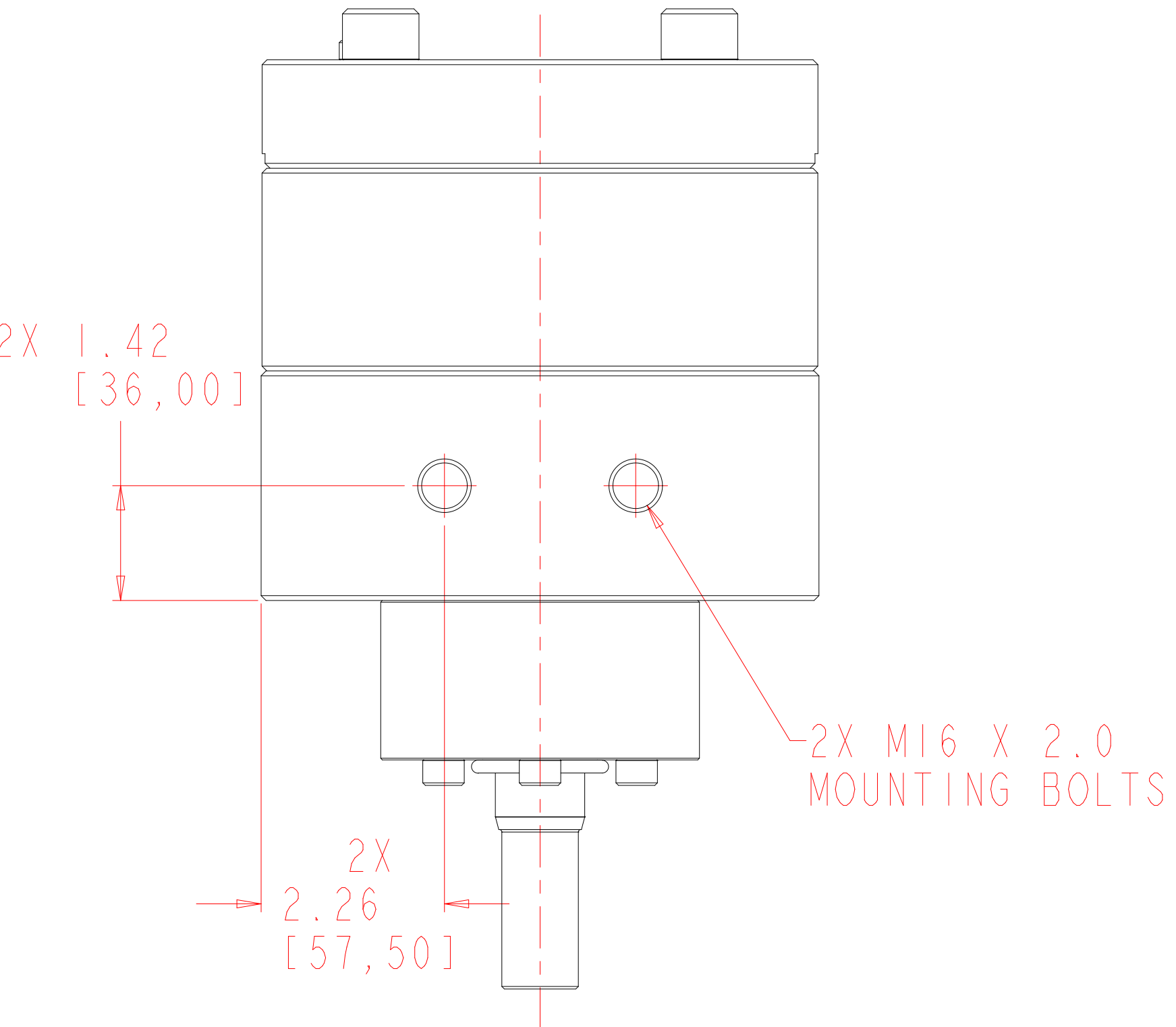
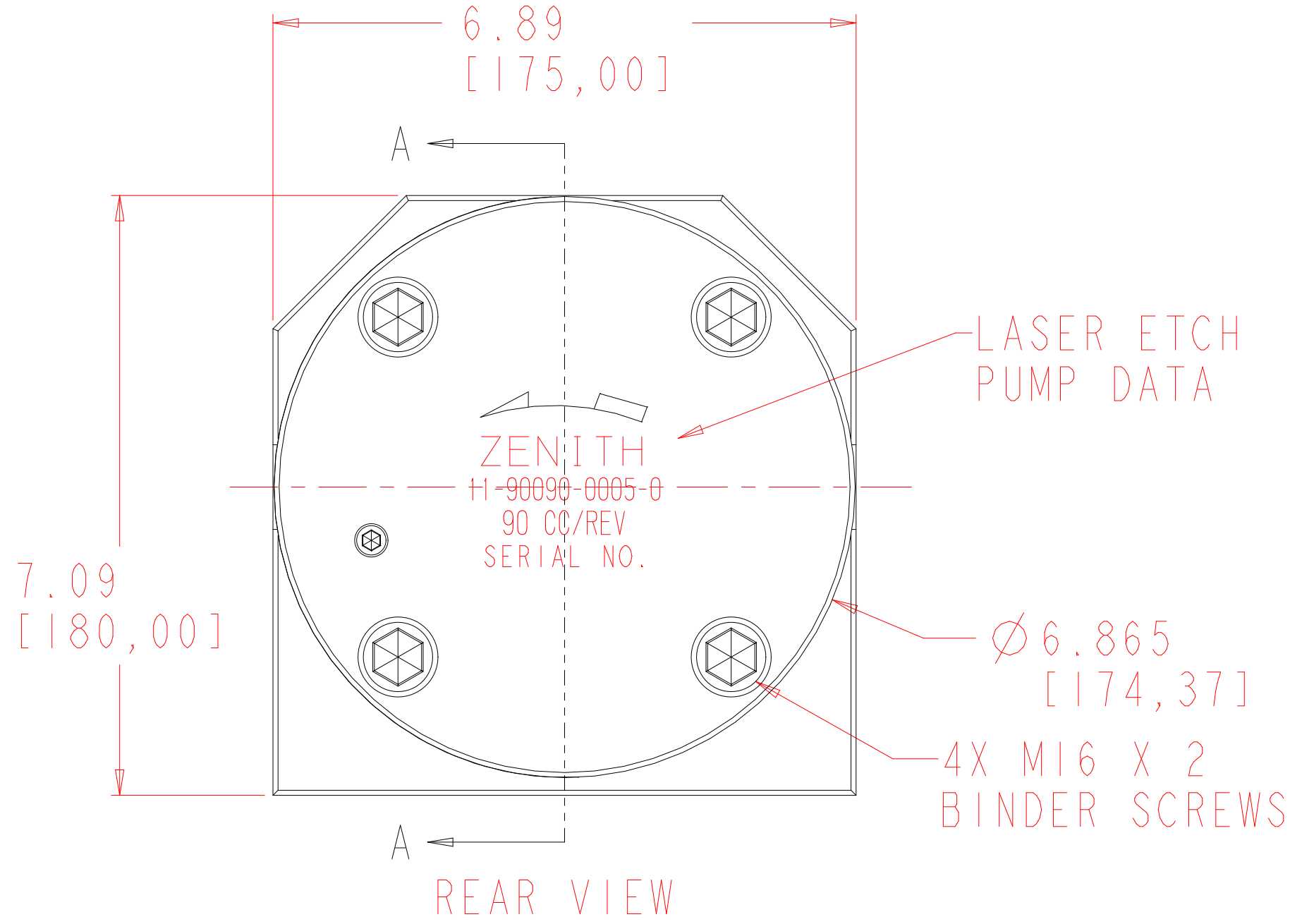
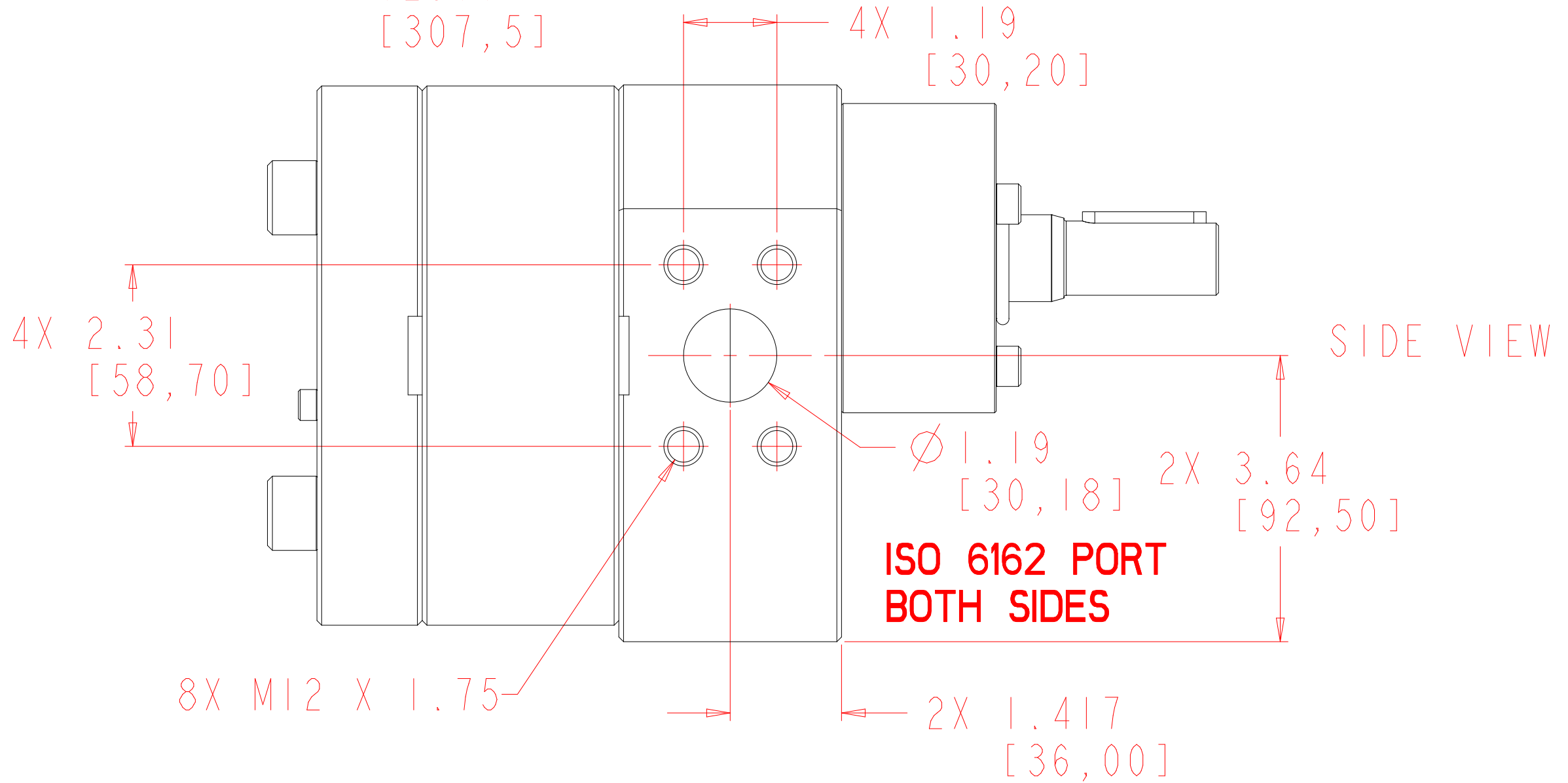
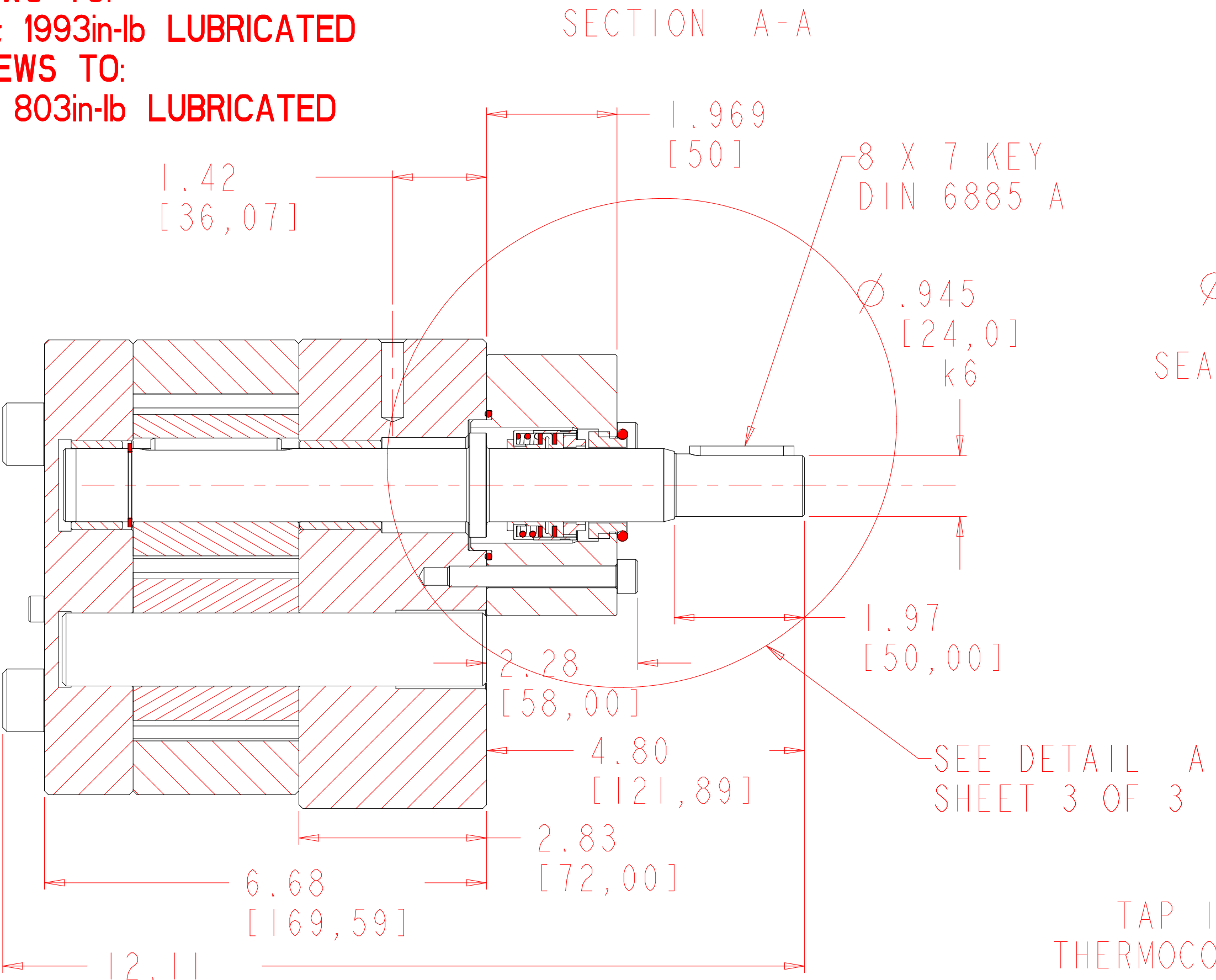


REVISIONS			
LTR	DESCRIPTION	DATE	APPROVED
A	REDRAWN IN PRO/E	3/26/98	207-98
B	35 X 25 CLR WAS 30 X 15 CLR	7/28/98	380-98

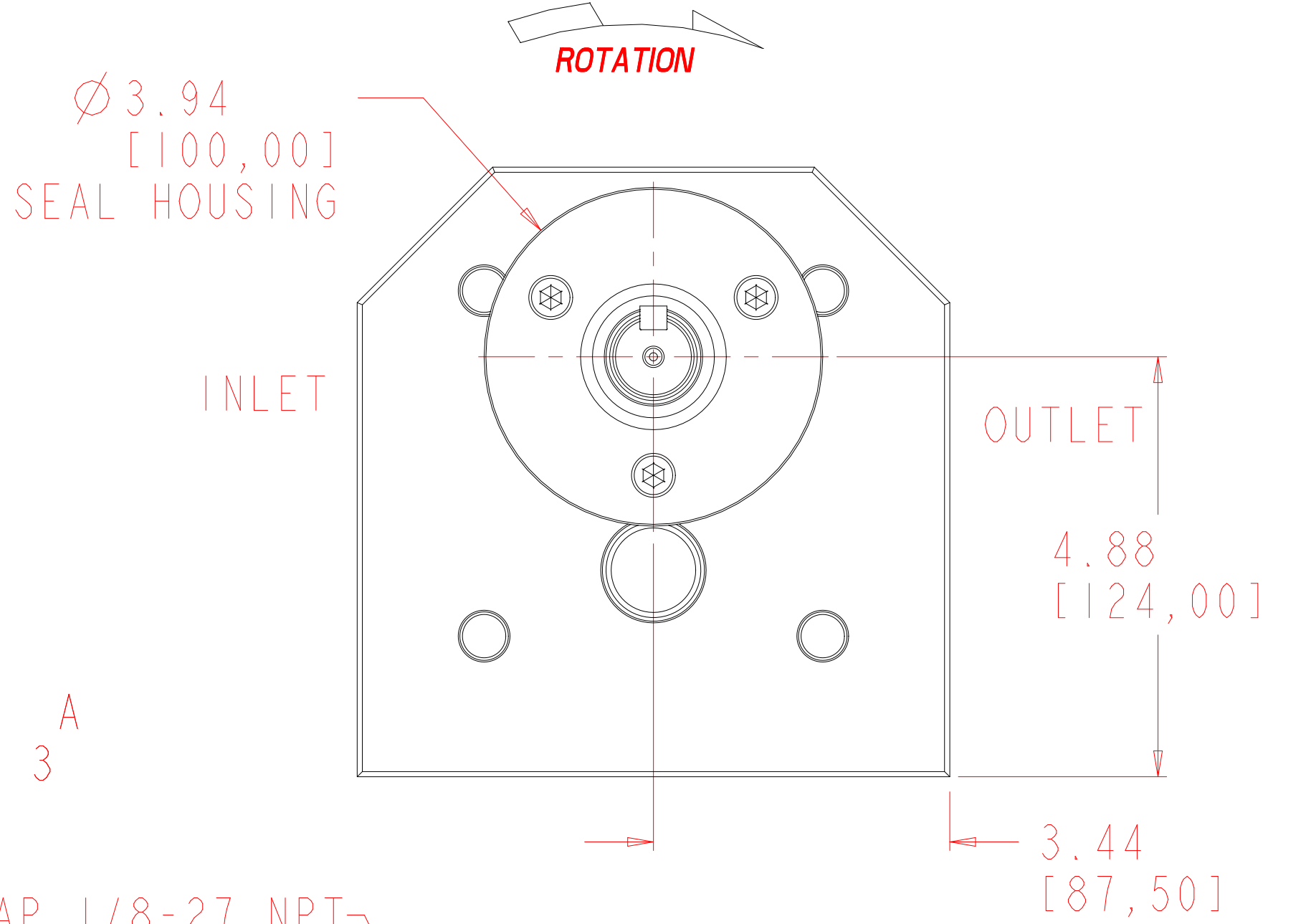
- NOTES:**
- 1) TIGHTEN M8 SEAL HOUSING BOLTS TO:  
350in-lb NON-LUBRICATED; 232in-lb LUBRICATED
  - 2) TIGHTEN M16 BINDER SCREWS TO:  
2900in-lb NON-LUBRICATED; 1993in-lb LUBRICATED
  - 3) TIGHTEN M12 FLANGE SCREWS TO:  
1200in-lb NON-LUBRICATED; 803in-lb LUBRICATED



BOTTOM VIEW

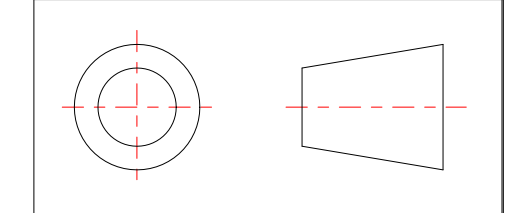


SIDE VIEW



SCALE 1:2

INTERPRET PER ANSI-Y14.5M 1982



DESIGN, SPECIFICATIONS, AND DETAILS CONTAINED ON OR REFERENCED TO ON THIS DRAWING ARE PROPRIETARY TO THE ZENITH DIVISION, PARKER HANNIFIN CORPORATION AND MAY NOT BE REPRODUCED, MANUFACTURED, OR OTHERWISE USED WITHOUT THE WRITTEN CONSENT OF THE ZENITH DIVISION, PARKER HANNIFIN CORPORATION

UNLESS OTHERWISE SPECIFIED DIMENSIONS ARE IN INCH TOLERANCES  
 .XX ± 0.01  
 .XXX ± 0.005  
 ANG ± 0.5

MATERIAL  
 SEE BILL OF MATERIALS

DRAWN	MW	03-26-98
CHECKED		
PART WEIGHT = LBS		
SURFACE AREA = IN <sup>2</sup>		
MODEL NUMBER =	119009000050	
DRAWING =	119009000050	
PRO/ENGINEER DRAWING	SIZE D	

**Parker ZENITH PUMPS DIVISION**  
 5910 ELWIN BUCHANAN DRIVE, SANFORD, NC 27330  
 PARKER HANNIFIN CORPORATION

B-9000 90 CC/REV  
 SINGLE STREAM 90 CC/REV

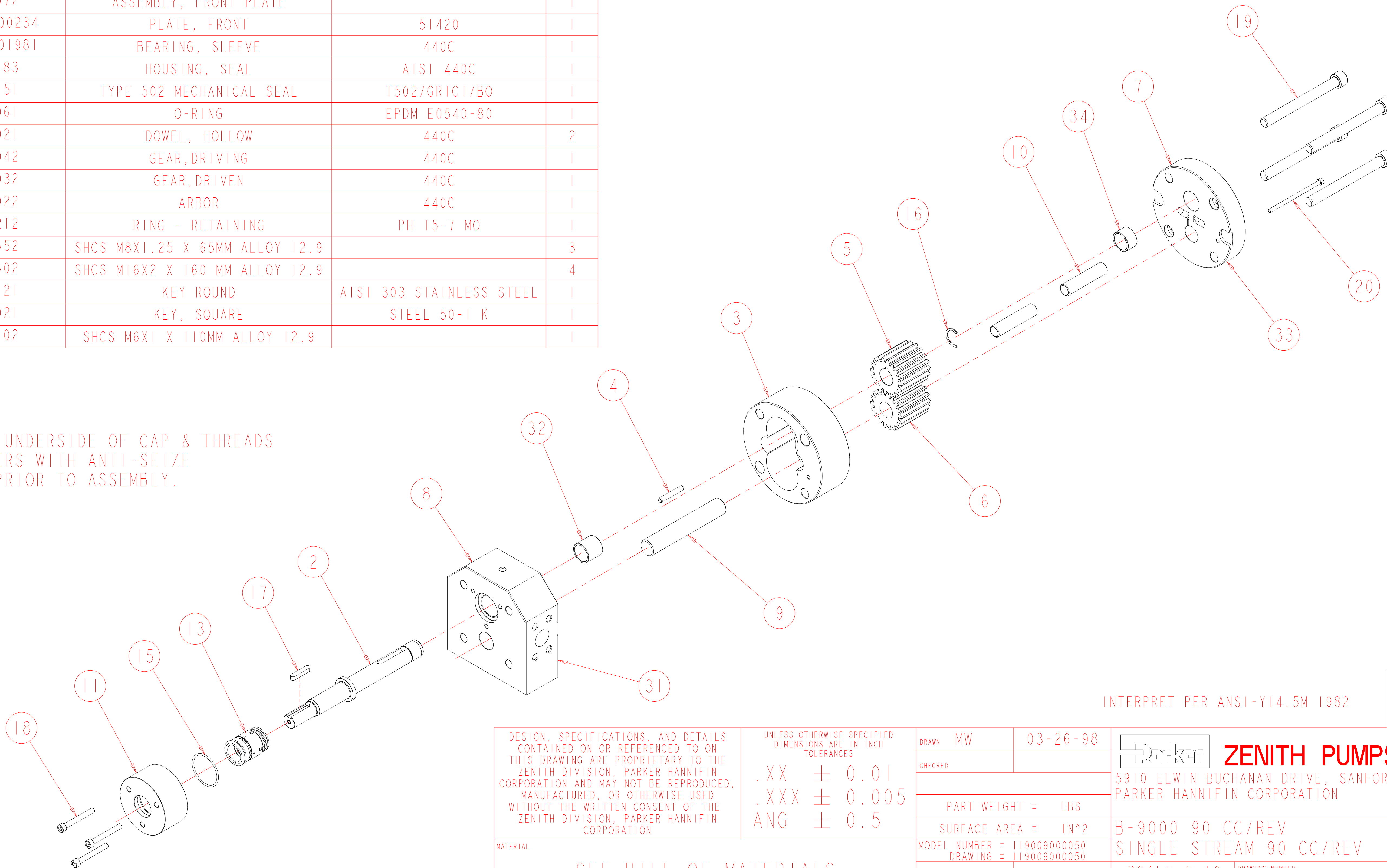
SCALE 5:8  
 SHEET 1 OF 3

DRAWING NUMBER  
 11-90090-0005-0

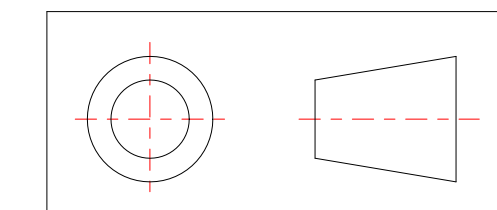
ITEM No.	PART NUMBER	PART NAME	MATERIAL	QTY
	119009000050	B-9000 90 CC/REV	SEE BILL OF MATERIALS	1
2	157956800283	SHAFT, DRIVE		1
3	156925100294	PLATE, GEAR	440C	1
7	146915100072	ASSEMBLY, REAR PLATE		1
33	156915100234	PLATE, REAR	440C	1
34	150451701961	BEARING, SLEEVE	440C	1
8	146945200072	ASSEMBLY, FRONT PLATE		1
31	156945200234	PLATE, FRONT	51420	1
32	150451701981	BEARING, SLEEVE	440C	1
11	155402000183	HOUSING, SEAL	AISI 440C	1
13	187900301151	TYPE 502 MECHANICAL SEAL	T502/GRICI/BO	1
15	187650402061	O-RING	EPDM E0540-80	1
10	151609100021	DOWEL, HOLLOW	440C	2
5	154509811042	GEAR, DRIVING	440C	1
6	154509811032	GEAR, DRIVEN	440C	1
9	150115600022	ARBOR	440C	1
16	181831800212	RING - RETAINING	PH 15-7 MO	1
18	187860810652	SHCS M8X1.25 X 65MM ALLOY 12.9		3
19	187861611602	SHCS M16X2 X 160 MM ALLOY 12.9		4
4	185600800121	KEY ROUND	AISI 303 STAINLESS STEEL	1
17	185600800021	KEY, SQUARE	STEEL 50-1 K	1
20	187860611102	SHCS M6X1 X 110MM ALLOY 12.9		1

REVISIONS			
LTR	DESCRIPTION	DATE	APPROVED
A	REDRAWN IN PRO/E	3/26/98	207-98
B	35 X 25 CLR WAS 30 X 15 CLR	7/28/98	380-98

LUBRICATE UNDERSIDE OF CAP & THREADS ON FASTENERS WITH ANTI-SEIZE COMPOUND PRIOR TO ASSEMBLY.



INTERPRET PER ANSI-Y14.5M 1982



DESIGN, SPECIFICATIONS, AND DETAILS CONTAINED ON OR REFERENCED TO ON THIS DRAWING ARE PROPRIETARY TO THE ZENITH DIVISION, PARKER HANNIFIN CORPORATION AND MAY NOT BE REPRODUCED, MANUFACTURED, OR OTHERWISE USED WITHOUT THE WRITTEN CONSENT OF THE ZENITH DIVISION, PARKER HANNIFIN CORPORATION

UNLESS OTHERWISE SPECIFIED DIMENSIONS ARE IN INCH TOLERANCES

.XX ± 0.01  
.XXX ± 0.005  
ANG ± 0.5

MATERIAL

SEE BILL OF MATERIALS

DRAWN MW 03-26-98

CHECKED

PART WEIGHT = LBS

SURFACE AREA = IN<sup>2</sup>

MODEL NUMBER = 119009000050  
DRAWING = 119009000050

PRO/ENGINEER  
DRAWING

SIZE D

**Parker ZENITH PUMPS DIVISION**

5910 ELWIN BUCHANAN DRIVE, SANFORD, NC 27330  
PARKER HANNIFIN CORPORATION

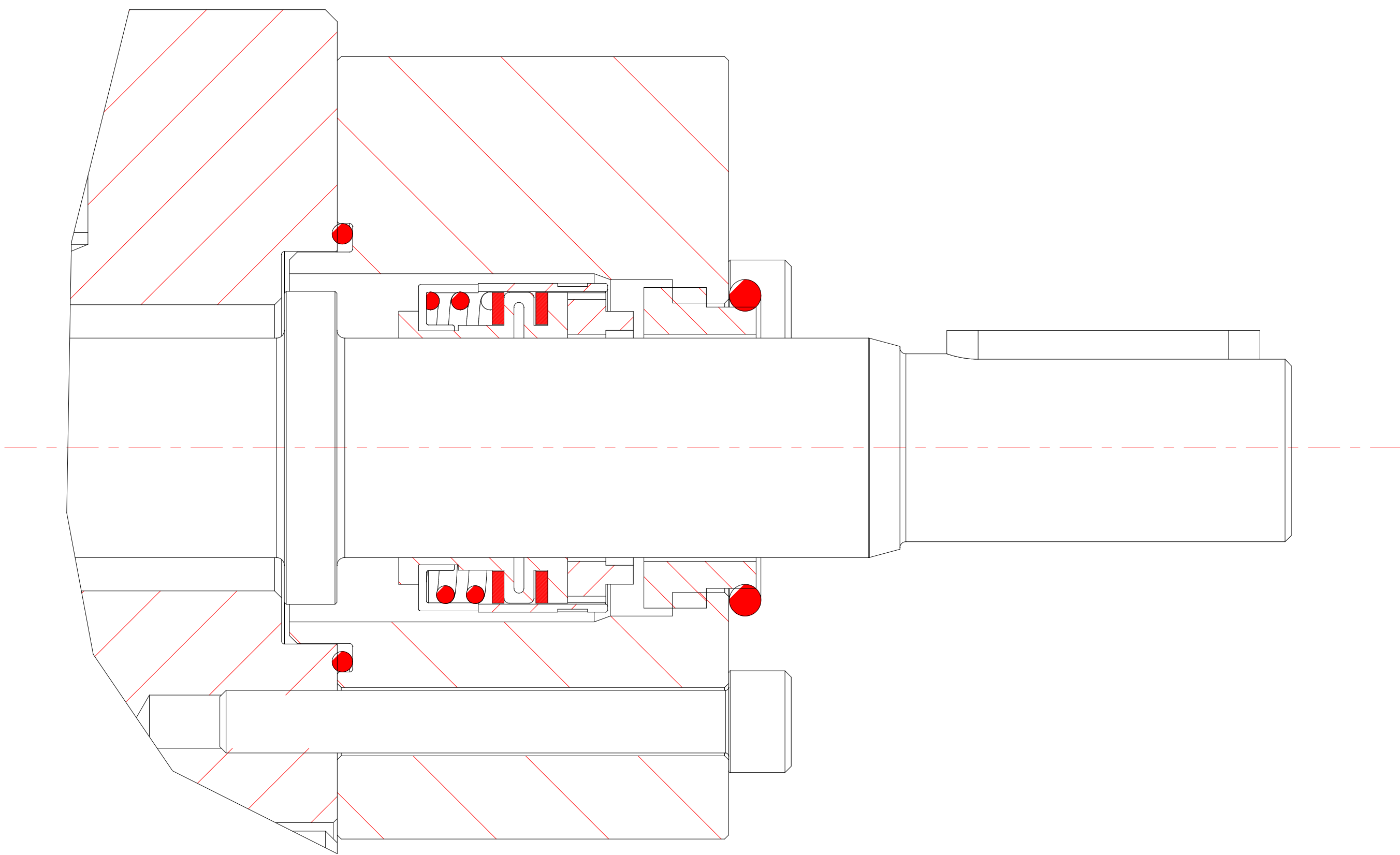
B-9000 90 CC/REV  
SINGLE STREAM 90 CC/REV

SCALE 5:16  
SHEET 2 OF 3

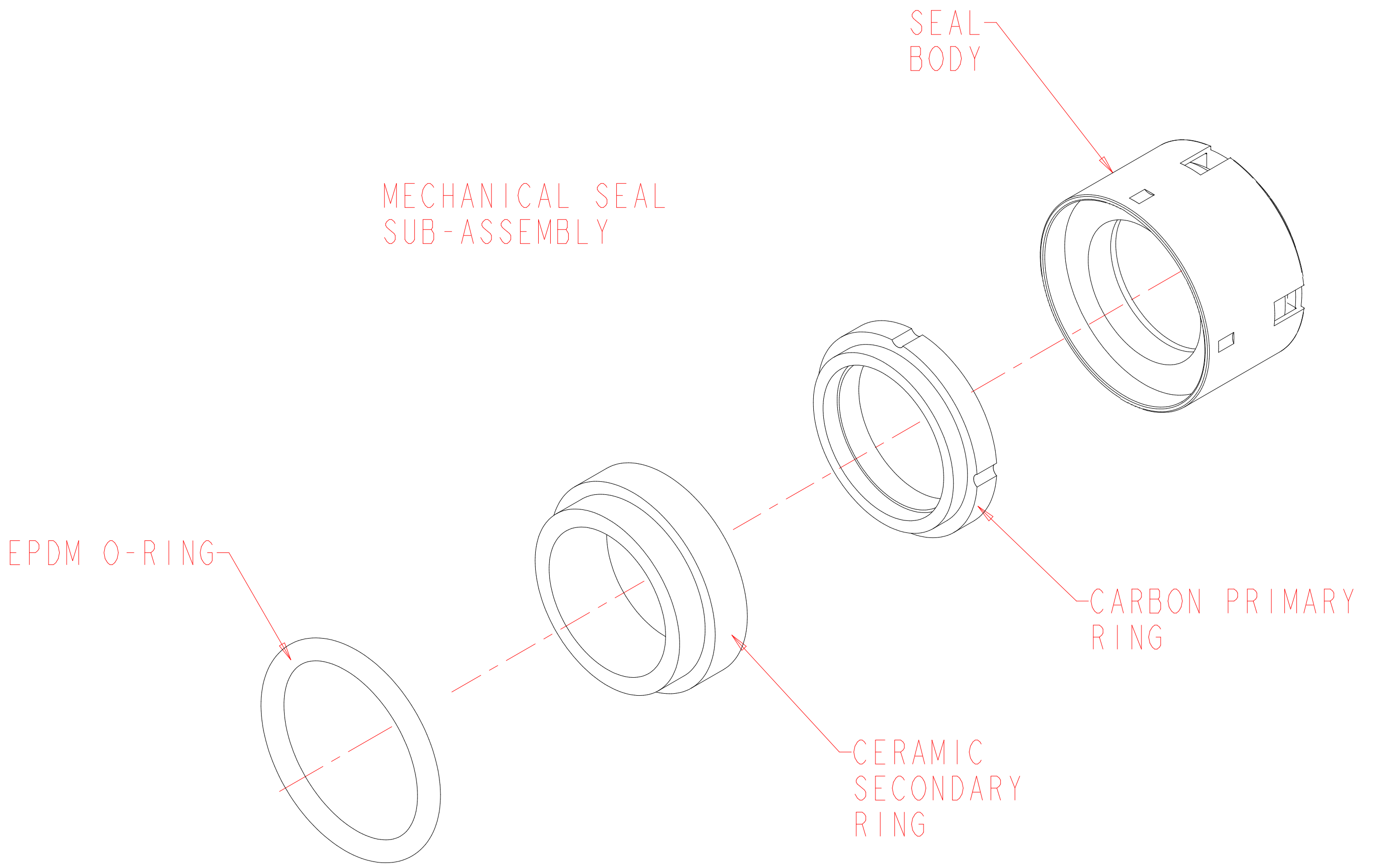
DRAWING NUMBER

11-90090-0005-0

REVISIONS			
LTR	DESCRIPTION	DATE	APPROVED
A	REDRAWN IN PRO/E	3/26/98	207-98
B	35 X 25 CLR WAS 30 X 15 CLR	7/28/98	380-98

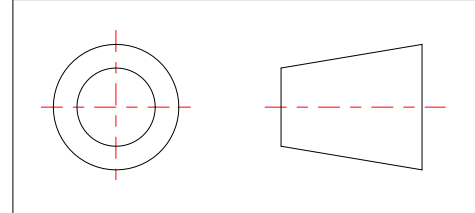


DETAIL A  
SCALE 2:1



SCALE 3:2

INTERPRET PER ANSI-Y14.5M 1982



DESIGN, SPECIFICATIONS, AND DETAILS CONTAINED ON OR REFERENCED TO ON THIS DRAWING ARE PROPRIETARY TO THE ZENITH DIVISION, PARKER HANNIFIN CORPORATION AND MAY NOT BE REPRODUCED, MANUFACTURED, OR OTHERWISE USED WITHOUT THE WRITTEN CONSENT OF THE ZENITH DIVISION, PARKER HANNIFIN CORPORATION

UNLESS OTHERWISE SPECIFIED DIMENSIONS ARE IN INCH TOLERANCES  
 .XX ± 0.01  
 .XXX ± 0.005  
 ANG ± 0.5

MATERIAL SEE BILL OF MATERIALS

DRAWN	MW	3/26/98
CHECKED		
PART WEIGHT = LBS		
SURFACE AREA = IN <sup>2</sup>		
PRO/ENGINEER DRAWING	SIZE D	

<b>ZENITH PUMPS DIVISION</b> 5910 ELWIN BUCHANAN DRIVE, SANFORD, NC 27330 PARKER HANNIFIN CORPORATION	B-9000 90 CC/REV SINGLE STREAM 90 CC/REV	
	SCALE 5:8 SHEET 3 OF 3	DRAWING NUMBER 11-90090-0005-0