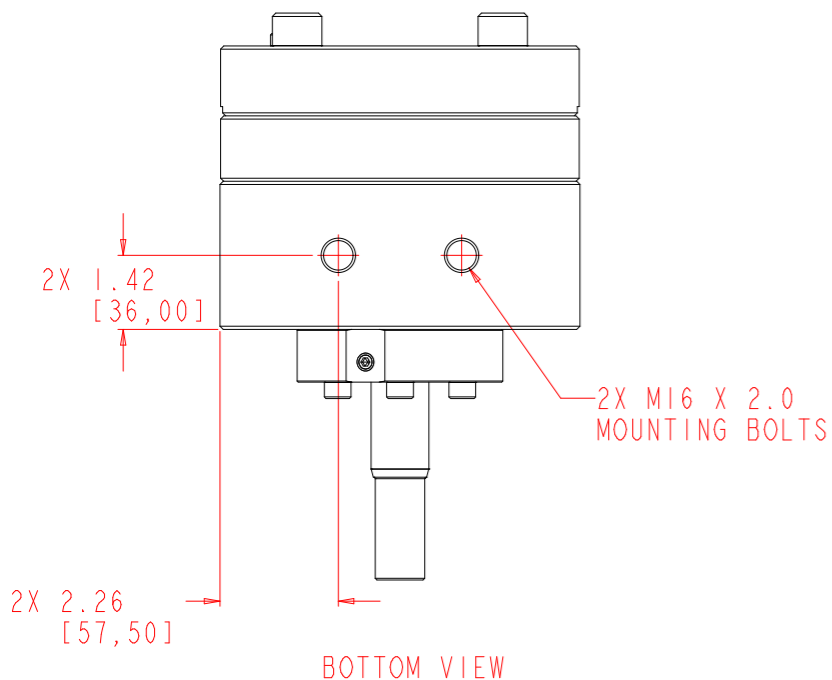
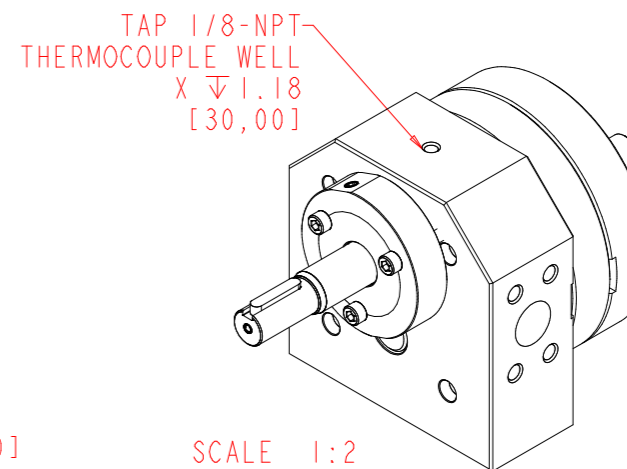
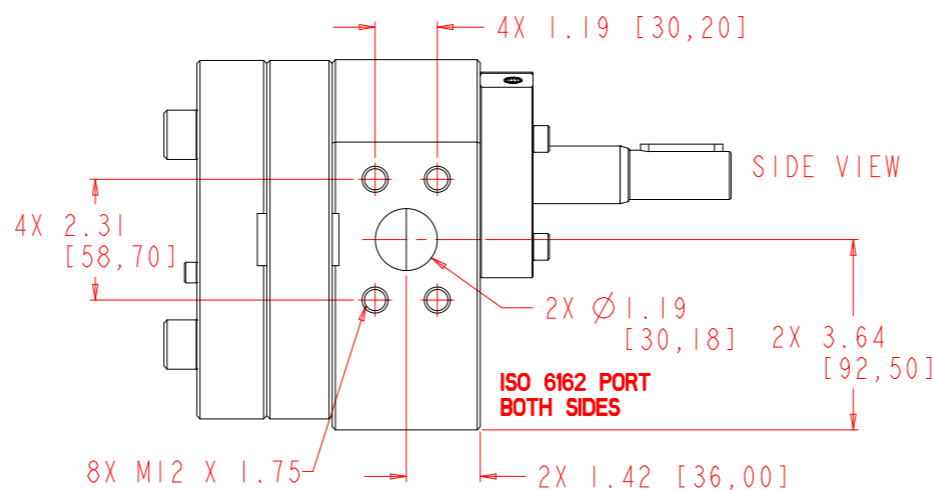
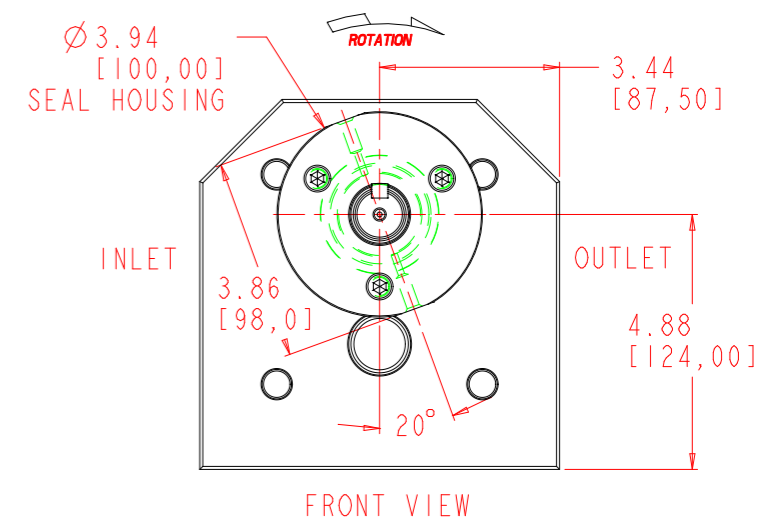
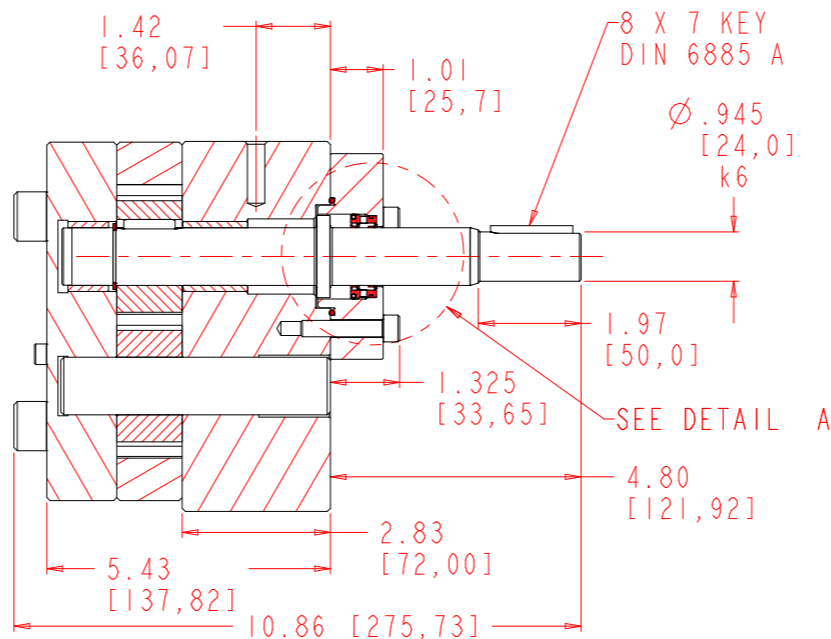
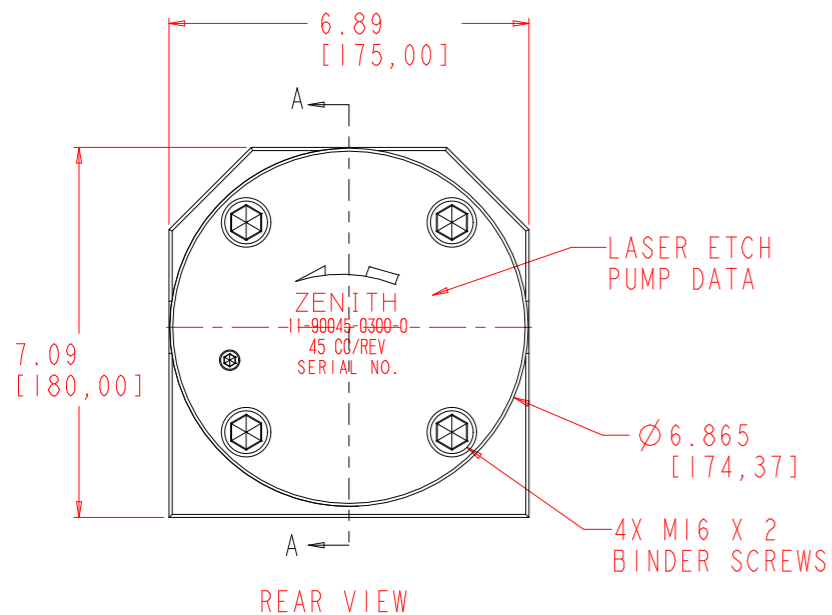


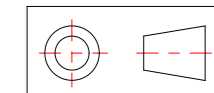
- NOTES:**
 1) TIGHTEN M8 SEAL HOUSING BOLTS TO: 350in-lb NON-LUBRICATED; 232in-lb LUBRICATED
 2) TIGHTEN M16 BINDER SCREWS TO: 2900in-lb NON-LUBRICATED; 1993in-lb LUBRICATED
 3) TIGHTEN M12 FLANGE SCREWS TO: 1200in-lb NON-LUBRICATED; 803in-lb LUBRICATED

REVISIONS			
LTR	DESCRIPTION	DATE	APPROVED
C	REDRAWN IN PRO/E	3/18/98	207-98

SECTION A-A



INTERPRET PER ANSI-Y14.5M 1982



DESIGN, SPECIFICATIONS, AND DETAILS CONTAINED ON OR REFERENCED TO ON THIS DRAWING ARE PROPRIETARY TO THE ZENITH DIVISION, PARKER HANNIFIN CORPORATION AND MAY NOT BE REPRODUCED, MANUFACTURED, OR OTHERWISE USED WITHOUT THE WRITTEN CONSENT OF THE ZENITH DIVISION, PARKER HANNIFIN CORPORATION

UNLESS OTHERWISE SPECIFIED DIMENSIONS ARE IN INCH TOLERANCES

.XX ± 0.01
 .XXX ± 0.005
 ANG ± 0.5

MATERIAL

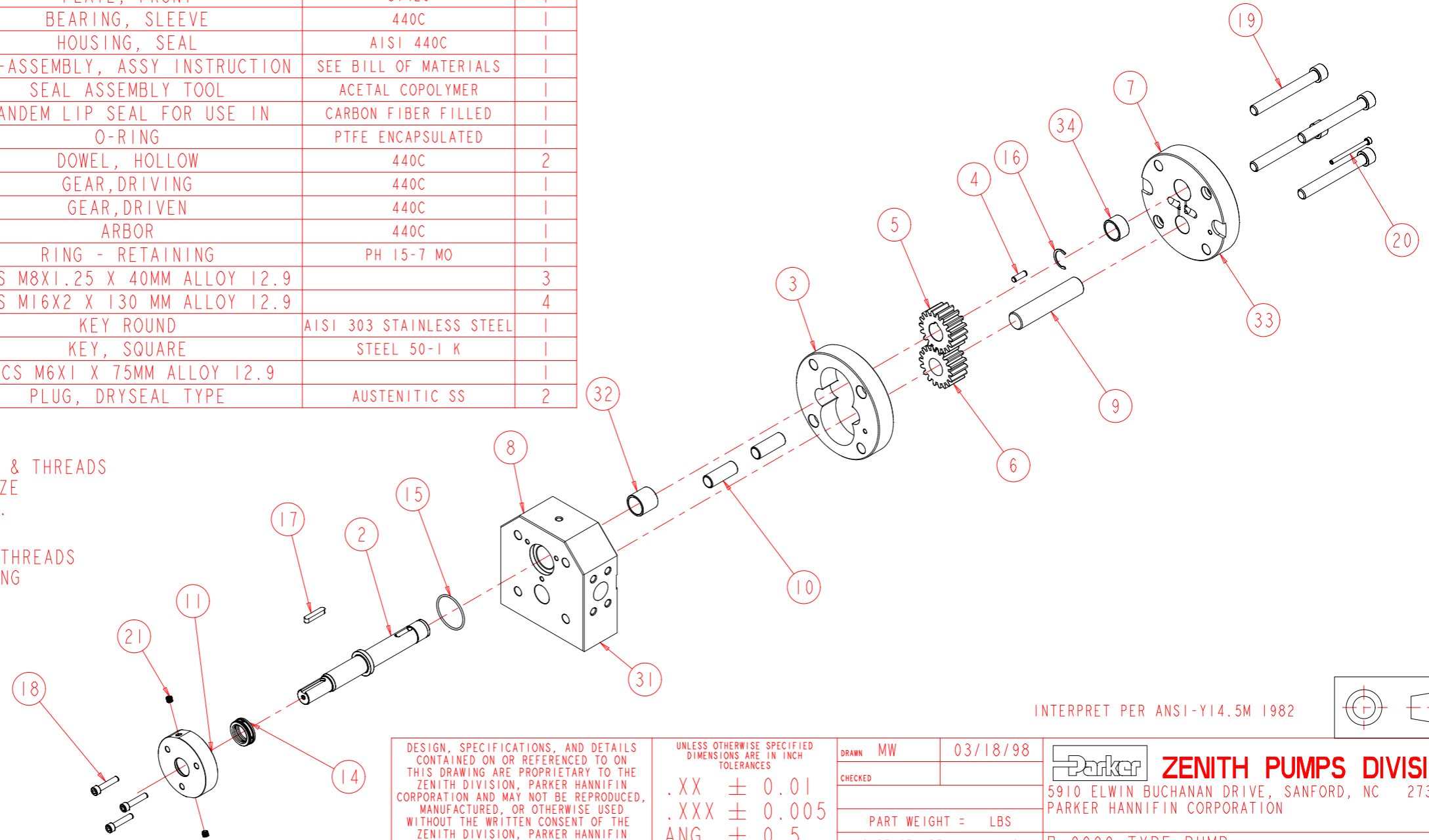
SEE BILL OF MATERIALS

DRAWN	MW	03/18/98
CHECKED		
PART WEIGHT =	LBS	
SURFACE AREA =	IN ²	
MODEL NUMBER =	119004503000	
DRAWING =	119004503000	
PRO/ENGINEER DRAWING	SIZE D	

	ZENITH PUMPS DIVISION
5910 ELWIN BUCHANAN DRIVE, SANFORD, NC 27330 PARKER HANNIFIN CORPORATION	
B-9000 TYPE PUMP 45 CC/REV	
SCALE 5:8	DRAWING NUMBER
SHEET 1 OF 3	11-90045-0300-0

ITEM No.	PART NUMBER	PART NAME	MATERIAL	QTY
	119004503000	B-9000 TYPE PUMP	SEE BILL OF MATERIALS	1
2	157956800263	SHAFT, DRIVE	440C	1
3	156925100274	PLATE, GEAR	440C	1
7	146915100072	ASSEMBLY, REAR PLATE		1
33	156915100234	PLATE, REAR	440C	1
34	150451701961	BEARING, SLEEVE	440C	1
8	146945200072	ASSEMBLY, FRONT PLATE		1
31	156945200234	PLATE, FRONT	51420	1
32	150451701981	BEARING, SLEEVE	440C	1
11	155401900403	HOUSING, SEAL	AISI 440C	1
14	147900400042	SUB-ASSEMBLY, ASSY INSTRUCTION	SEE BILL OF MATERIALS	1
41	150013100672	SEAL ASSEMBLY TOOL	ACETAL COPOLYMER	1
13	187900401361	TANDEM LIP SEAL FOR USE IN	CARBON FIBER FILLED	1
15	187650401881	O-RING	PTFE ENCAPSULATED	1
10	151609100081	DOWEL, HOLLOW	440C	2
5	154509811222	GEAR, DRIVING	440C	1
6	154509811212	GEAR, DRIVEN	440C	1
9	150115600082	ARBOR	440C	1
16	181831800212	RING - RETAINING	PH 15-7 MO	1
18	187860810402	SHCS M8X1.25 X 40MM ALLOY 12.9		3
19	187861611302	SHCS M16X2 X 130 MM ALLOY 12.9		4
4	185600800191	KEY ROUND	AISI 303 STAINLESS STEEL	1
17	185600800021	KEY, SQUARE	STEEL 50-1 K	1
20	187860610752	SHCS M6X1 X 75MM ALLOY 12.9		1
21	187300000071	PLUG, DRYSEAL TYPE	AUSTENITIC SS	2

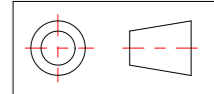
REVISIONS			
LTR	DESCRIPTION	DATE	APPROVED
C	REDRAWN IN PRO/E	3/18/98	207-98



LUBRICATE UNDERSIDE OF CAP & THREADS ON FASTENERS WITH ANTI-SEIZE COMPOUND PRIOR TO ASSEMBLY.

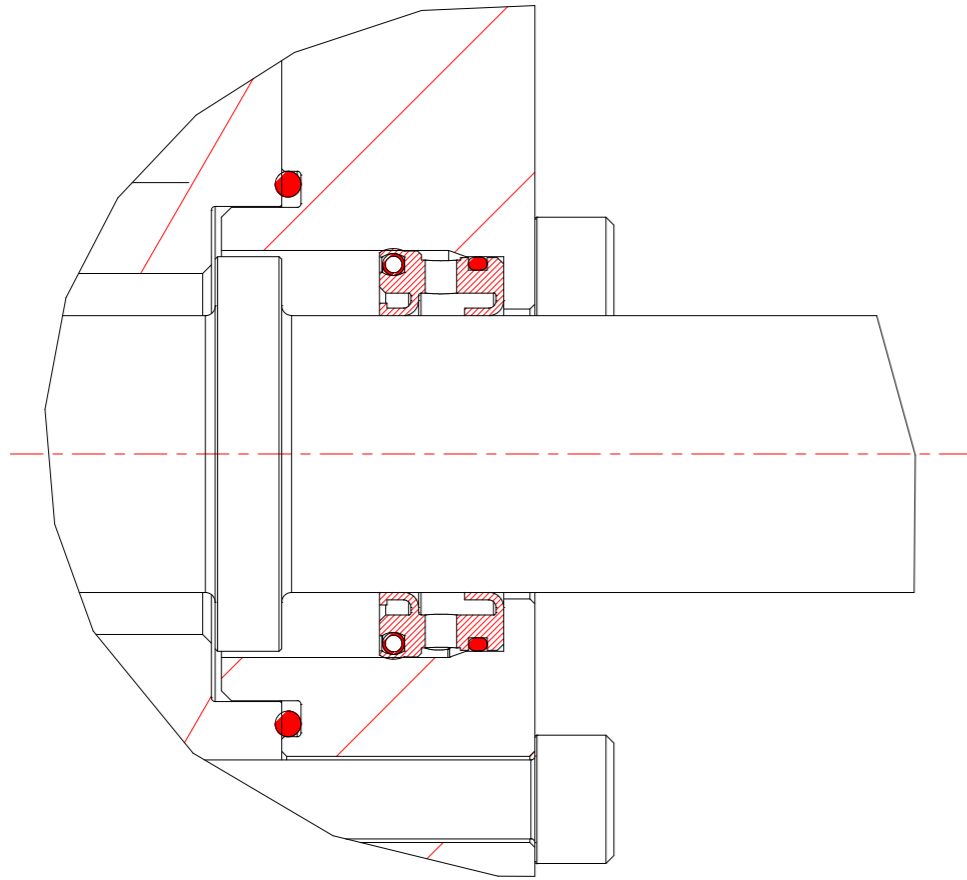
APPLY TEFLON TAPE TO PLUG THREADS WHEN ASSEMBLING INTO HOUSING TO PREVENT LEAKAGE.

INTERPRET PER ANSI-Y14.5M 1982



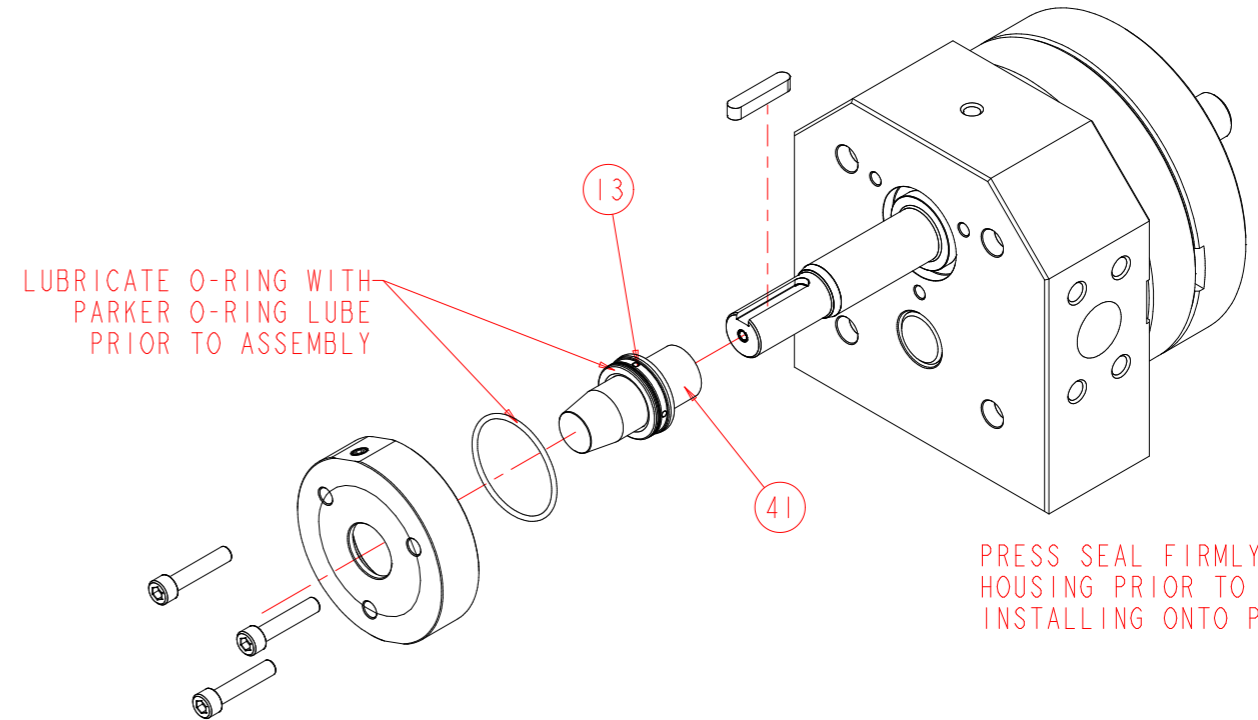
DESIGN, SPECIFICATIONS, AND DETAILS CONTAINED ON OR REFERENCED TO ON THIS DRAWING ARE PROPRIETARY TO THE ZENITH DIVISION, PARKER HANNIFIN CORPORATION AND MAY NOT BE REPRODUCED, MANUFACTURED, OR OTHERWISE USED WITHOUT THE WRITTEN CONSENT OF THE ZENITH DIVISION, PARKER HANNIFIN CORPORATION	UNLESS OTHERWISE SPECIFIED DIMENSIONS ARE IN INCH TOLERANCES .XX ± 0.01 .XXX ± 0.005 ANG ± 0.5	DRAWN MW 03/18/98		ZENITH PUMPS DIVISION 5910 ELWIN BUCHANAN DRIVE, SANFORD, NC 27330 PARKER HANNIFIN CORPORATION
		CHECKED		
MATERIAL SEE BILL OF MATERIALS		SURFACE AREA = IN ²	B-9000 TYPE PUMP 45 CC/REV	
		MODEL NUMBER = 119004503000 DRAWING = 119004503000	PRO/ENGINEER DRAWING SIZE D	SCALE 5:16 SHEET 2 OF 3

REVISIONS			
LTR	DESCRIPTION	DATE	APPROVED
C	REDRAWN IN PRO/E	3/18/98	207-98



DETAIL A
SCALE 3:1

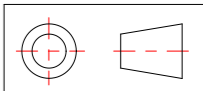
INSTALL SEAL ASSEMBLY TOOL
ONTO SHAFT TO COVER KEYWAY
DURING SEAL INSTALLATION,
TO PREVENT DAMAGE



LUBRICATE O-RING WITH
PARKER O-RING LUBE
PRIOR TO ASSEMBLY

PRESS SEAL FIRMLY INTO
HOUSING PRIOR TO
INSTALLING ONTO PUMP.

INTERPRET PER ANSI-Y14.5M 1982



DESIGN, SPECIFICATIONS, AND DETAILS CONTAINED ON OR REFERENCED TO ON THIS DRAWING ARE PROPRIETARY TO THE ZENITH DIVISION, PARKER HANNIFIN CORPORATION AND MAY NOT BE REPRODUCED, MANUFACTURED, OR OTHERWISE USED WITHOUT THE WRITTEN CONSENT OF THE ZENITH DIVISION, PARKER HANNIFIN CORPORATION	UNLESS OTHERWISE SPECIFIED DIMENSIONS ARE IN INCH TOLERANCES .XX ± 0.01 .XXX ± 0.005 ANG ± 0.5	DRAWN MW 03/18/98	ZENITH PUMPS DIVISION 5910 ELWIN BUCHANAN DRIVE, SANFORD, NC 27330 PARKER HANNIFIN CORPORATION	
		CHECKED		
		PART WEIGHT = LBS		B-9000 TYPE PUMP 45 CC/REV
		SURFACE AREA = IN ²		
MATERIAL SEE BILL OF MATERIALS		MODEL NUMBER = 119004503000 DRAWING = 119004503000	SCALE 5:8 SHEET 3 OF 3	
		PRO/ENGINEER DRAWING SIZE D	DRAWING NUMBER 11-90045-0300-0	