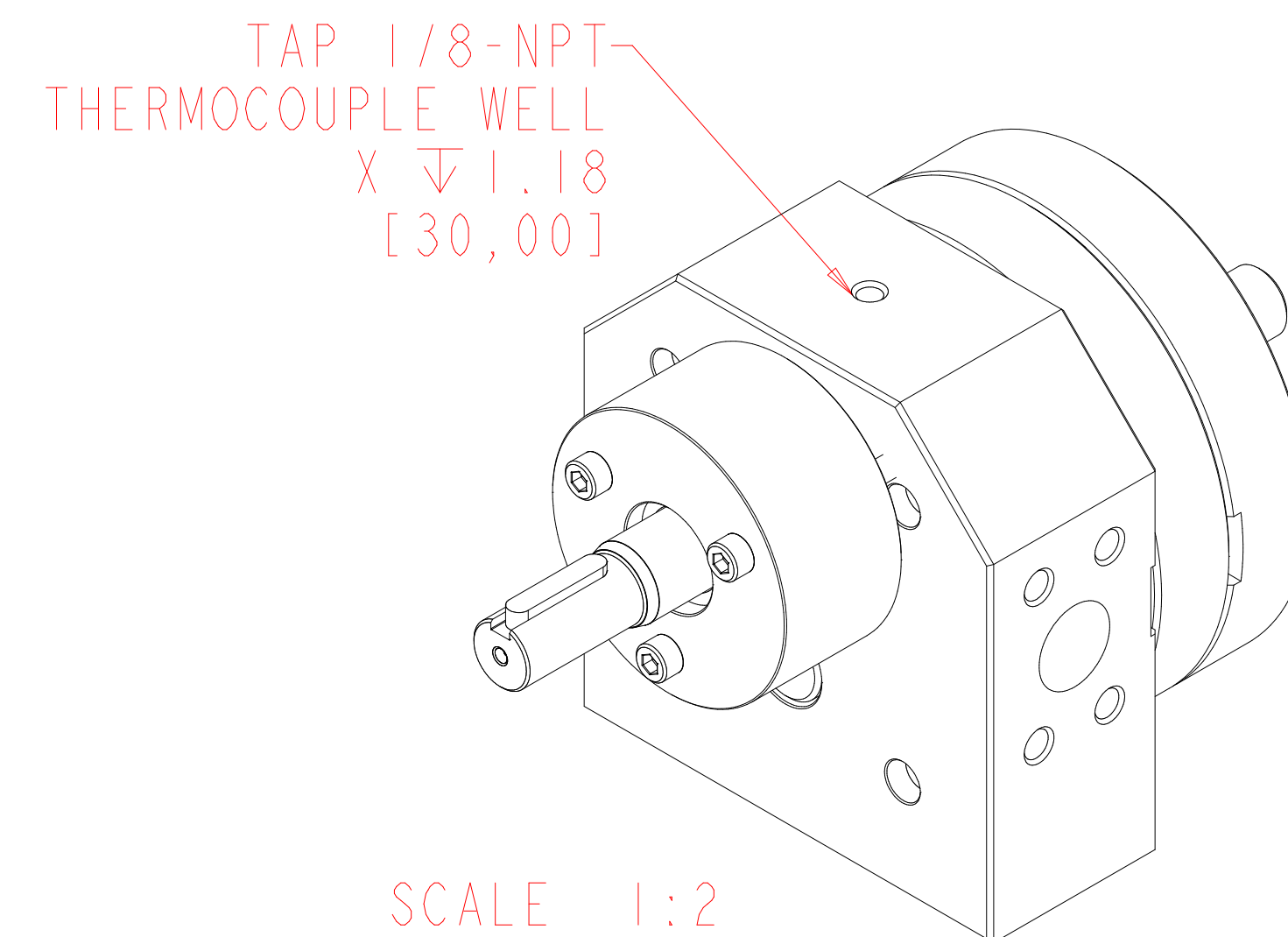
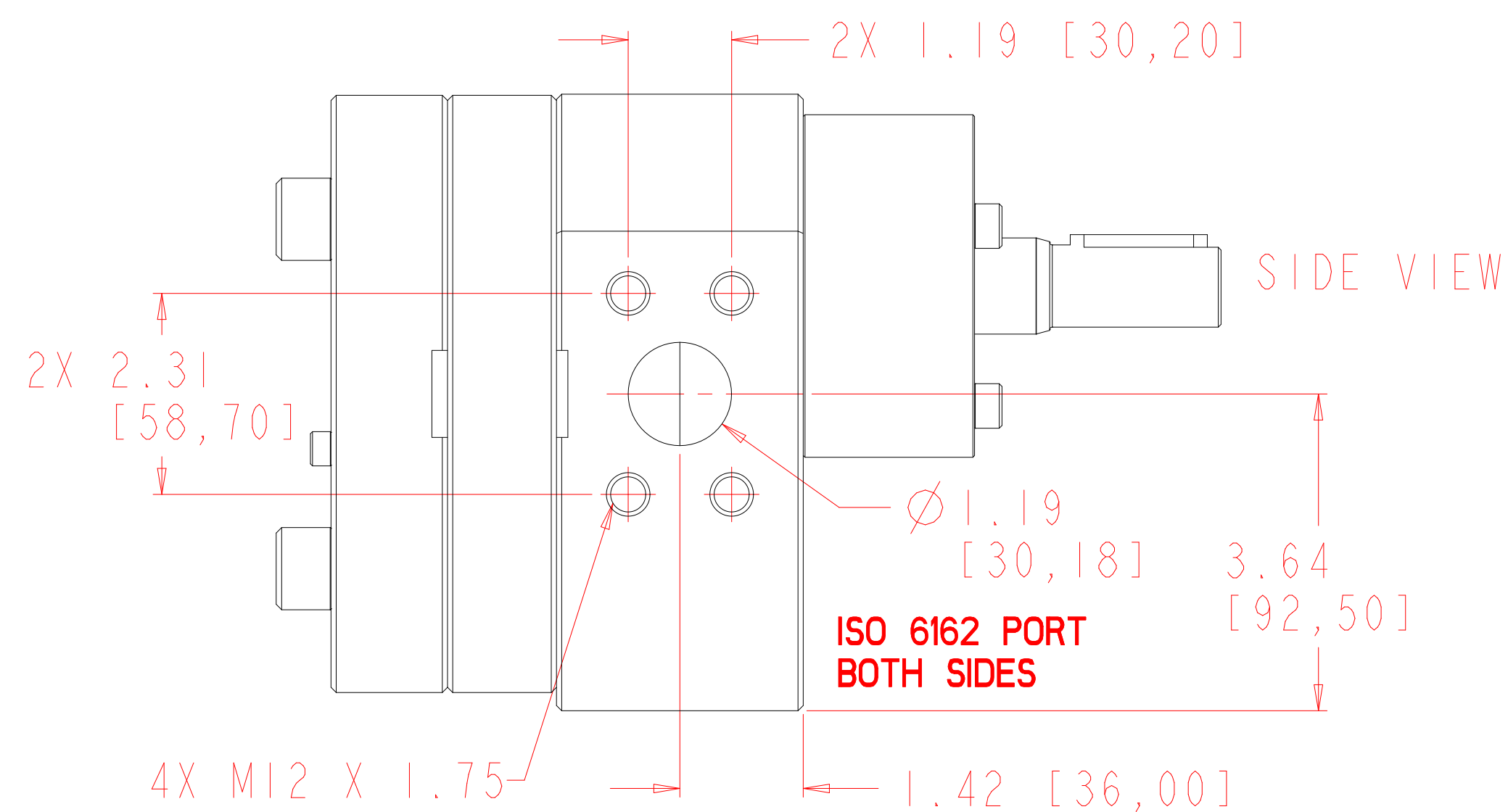
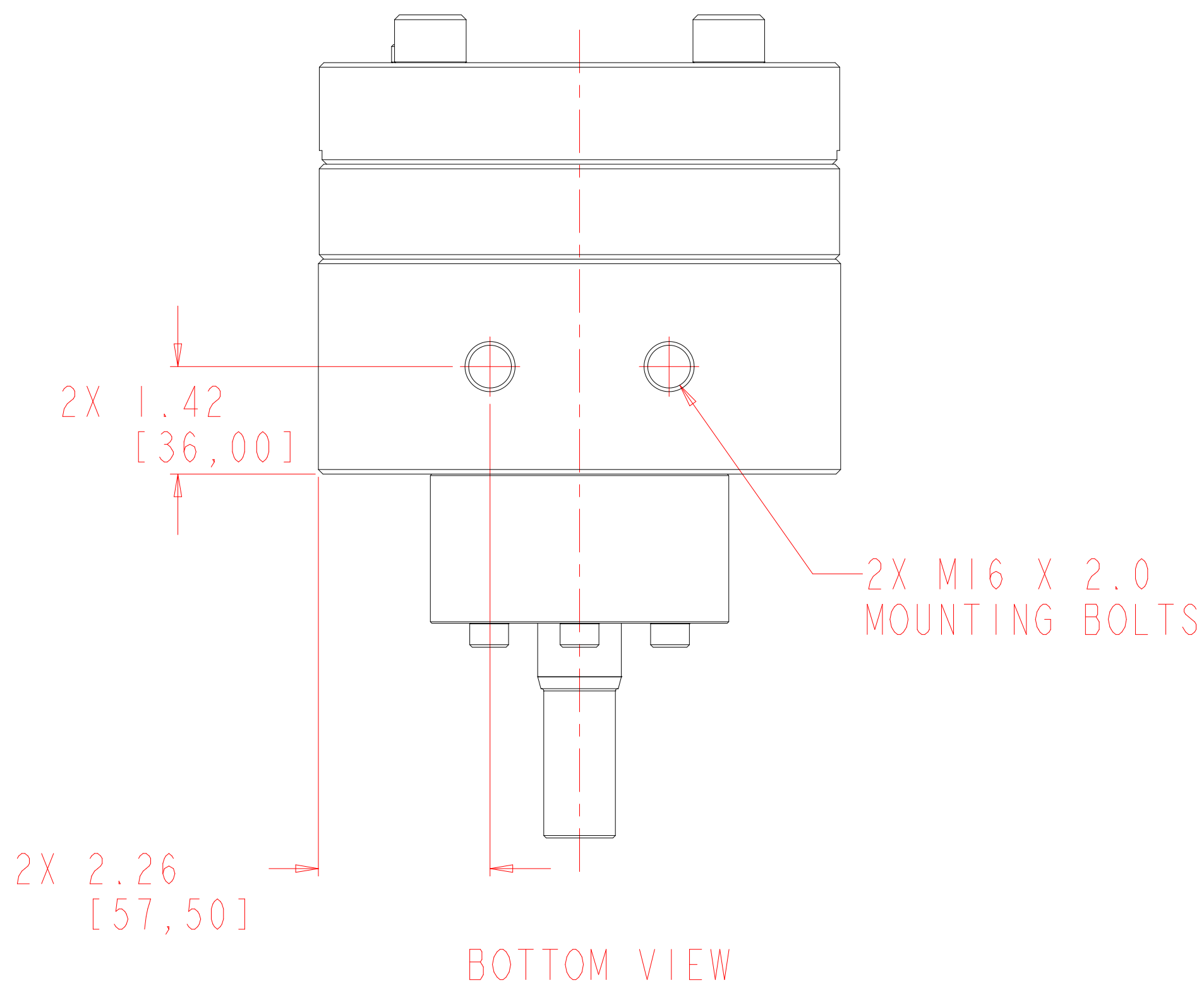
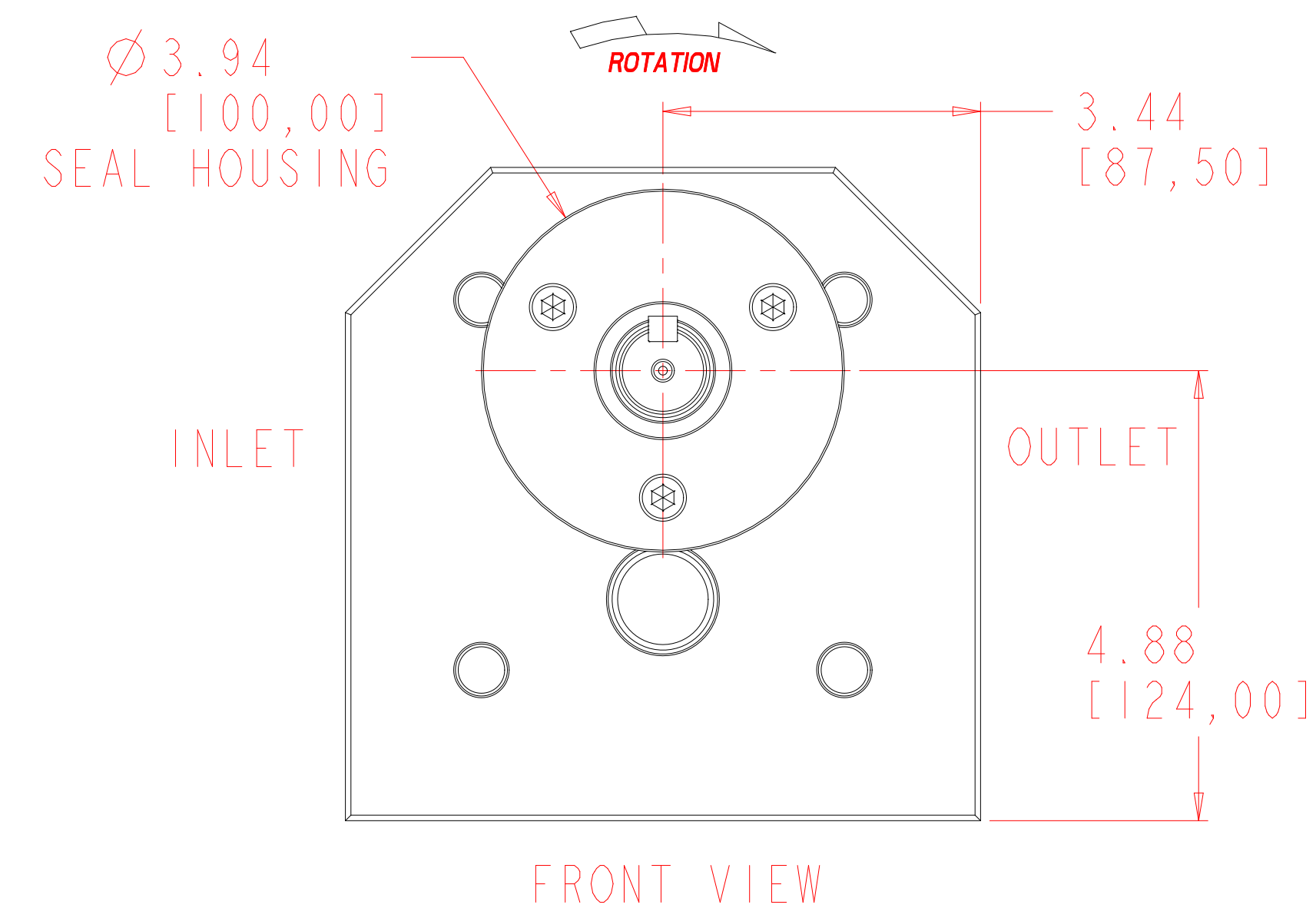
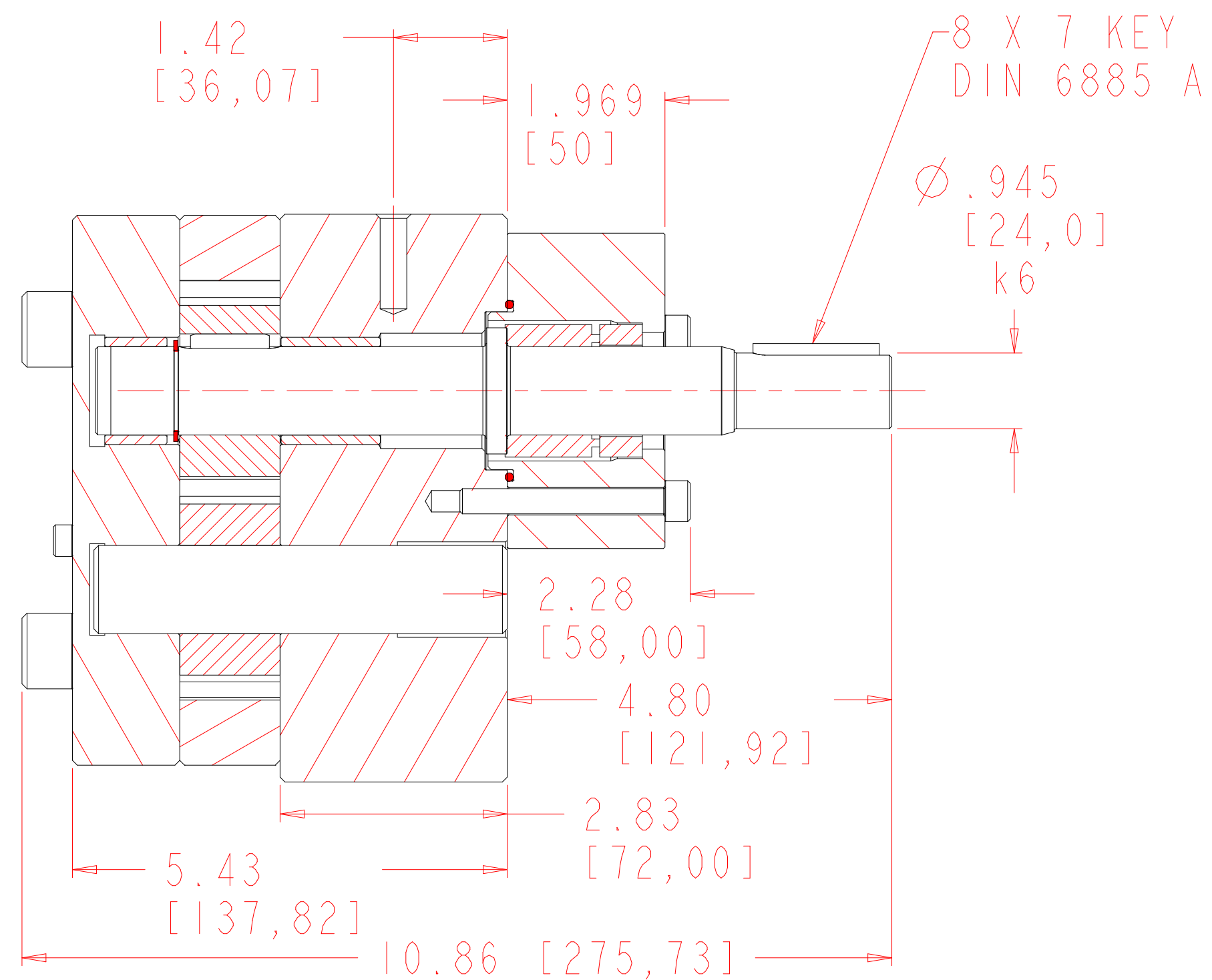
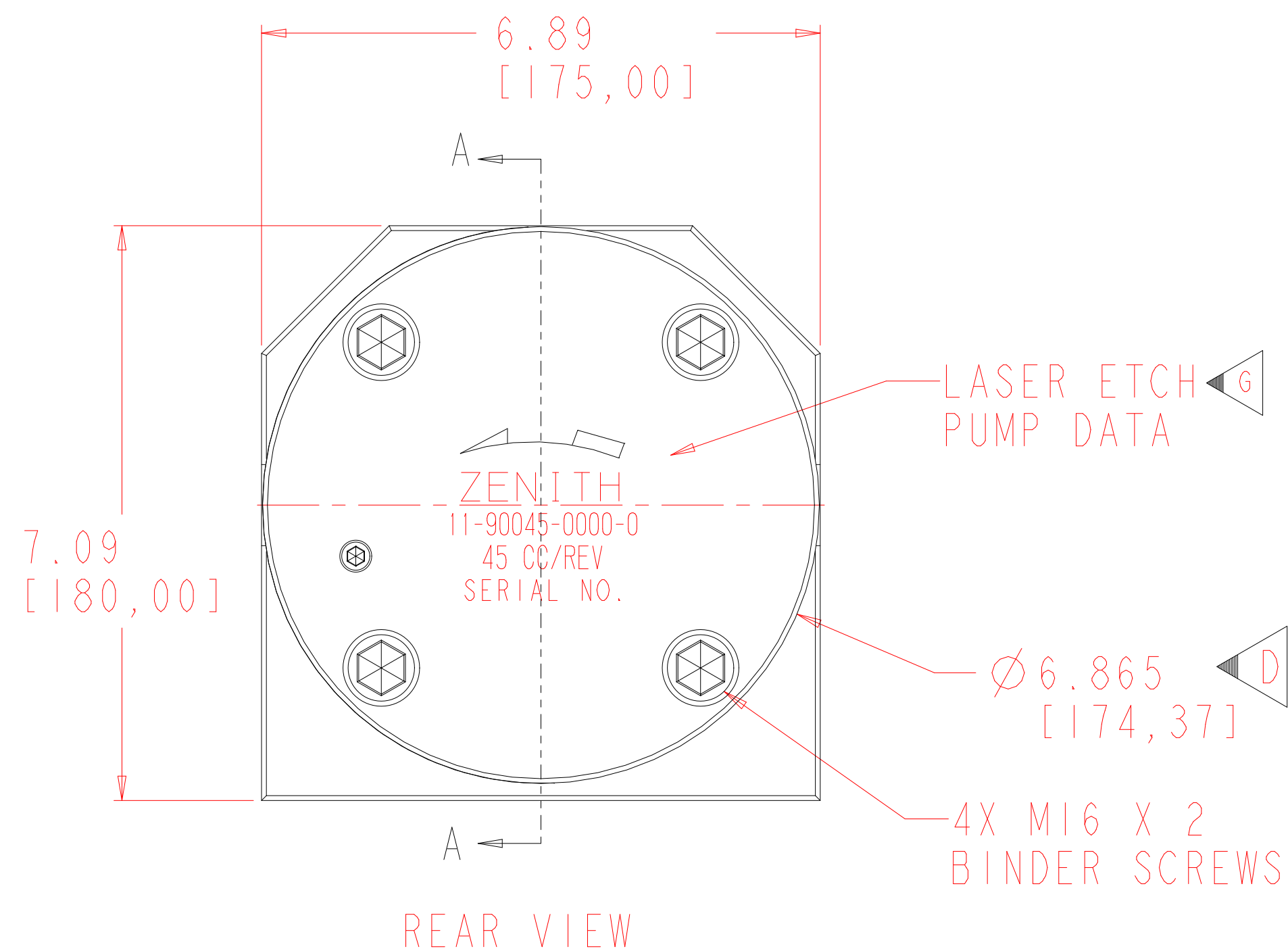


NOTES:

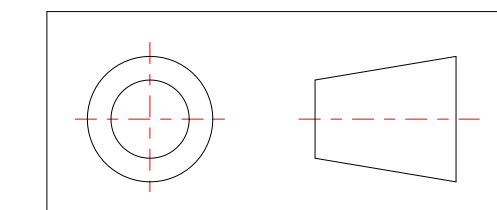
- 1) TIGHTEN M8 SEAL HOUSING BOLTS TO: 350in-lb NON-LUBRICATED; 232in-lb LUBRICATED
- 2) TIGHTEN M16 BINDER SCREWS TO: 2900in-lb NON-LUBRICATED; 1993in-lb LUBRICATED
- 3) TIGHTEN M12 FLANGE SCREWS TO: 1200in-lb NON-LUBRICATED; 803in-lb LUBRICATED

REVISIONS			
LTR	DESCRIPTION	DATE	APPROVED
G	UPDATED SERIES 9000 PUMP DATA	05-22-98	620-97

SECTION A-A



INTERPRET PER ANSI-Y14.5M 1982



DESIGN, SPECIFICATIONS, AND DETAILS CONTAINED ON OR REFERENCED TO ON THIS DRAWING ARE PROPRIETARY TO THE ZENITH DIVISION, PARKER HANNIFIN CORPORATION AND MAY NOT BE REPRODUCED, MANUFACTURED, OR OTHERWISE USED WITHOUT THE WRITTEN CONSENT OF THE ZENITH DIVISION, PARKER HANNIFIN CORPORATION

UNLESS OTHERWISE SPECIFIED DIMENSIONS ARE IN INCH TOLERANCES

.XX ± 0.01
.XXX ± 0.005
ANG ± 0.5

MATERIAL

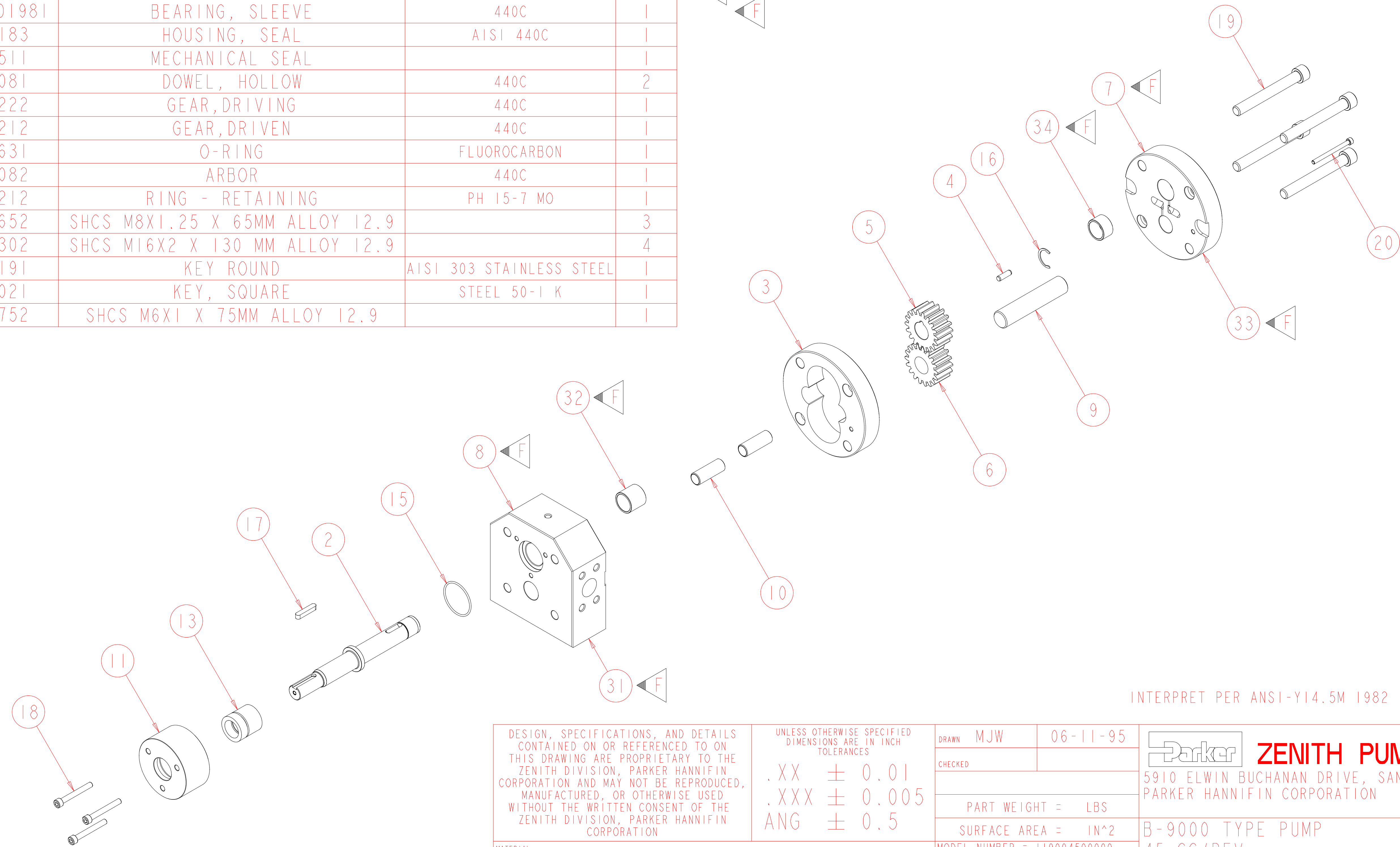
SEE BILL OF MATERIALS

DRAWN	MJW	06-11-95
CHECKED		
PRO/ENGINEER DRAWING	SIZE D	

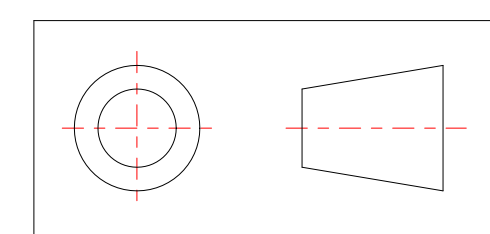
	ZENITH PUMPS DIVISION
5910 ELWIN BUCHANAN DRIVE, SANFORD, NC 27330 PARKER HANNIFIN CORPORATION	
PART WEIGHT =	LBS
SURFACE AREA =	IN ²
MODEL NUMBER = 119004500000 DRAWING = 119004500000	B-9000 TYPE PUMP 45 CC/REV
SHEET 1 OF 2	DRAWING NUMBER 11-90045-0000-0

ITEM No.	PART NUMBER	PART NAME	MATERIAL	QTY
	119004500000	B-9000 TYPE PUMP	SEE BILL OF MATERIALS	1
2	157956800263	SHAFT, DRIVE	440C	1
3	156925100274	PLATE, GEAR	440C	1
7	146915100072	ASSEMBLY, REAR PLATE		1
33	156915100234	PLATE, REAR	440C	1
34	150451701961	BEARING, SLEEVE	440C	1
8	146945200072	ASSEMBLY, FRONT PLATE		1
31	156945200234	PLATE, FRONT	51420	1
32	150451701981	BEARING, SLEEVE	440C	1
11	155402000183	HOUSING, SEAL	AISI 440C	1
13	187900300511	MECHANICAL SEAL		1
10	151609100081	DOWEL, HOLLOW	440C	2
5	154509811222	GEAR, DRIVING	440C	1
6	154509811212	GEAR, DRIVEN	440C	1
15	187650401631	O-RING	FLUOROCARBON	1
9	150115600082	ARBOR	440C	1
16	181831800212	RING - RETAINING	PH 15-7 MO	1
18	187860810652	SHCS M8X1.25 X 65MM ALLOY 12.9		3
19	187861611302	SHCS M16X2 X 130 MM ALLOY 12.9		4
4	185600800191	KEY ROUND	AISI 303 STAINLESS STEEL	1
17	185600800021	KEY, SQUARE	STEEL 50-1 K	1
20	187860610752	SHCS M6X1 X 75MM ALLOY 12.9		1

REVISIONS			
LTR	DESCRIPTION	DATE	APPROVED
G	UPDATED SERIES 9000 PUMP DATA	05-22-98	620-97



INTERPRET PER ANSI-Y14.5M 1982



DESIGN, SPECIFICATIONS, AND DETAILS CONTAINED ON OR REFERENCED TO ON THIS DRAWING ARE PROPRIETARY TO THE ZENITH DIVISION, PARKER HANNIFIN CORPORATION AND MAY NOT BE REPRODUCED, MANUFACTURED, OR OTHERWISE USED WITHOUT THE WRITTEN CONSENT OF THE ZENITH DIVISION, PARKER HANNIFIN CORPORATION

UNLESS OTHERWISE SPECIFIED DIMENSIONS ARE IN INCH TOLERANCES
 .XX ± 0.01
 .XXX ± 0.005
 ANG ± 0.5

MATERIAL
 SEE BILL OF MATERIALS

DRAWN	MJW	06-11-95
CHECKED		
PRO/ENGINEER	DRAWING	SIZE D

Parker ZENITH PUMPS DIVISION
 5910 ELWIN BUCHANAN DRIVE, SANFORD, NC 27330
 PARKER HANNIFIN CORPORATION

B-9000 TYPE PUMP
 45 CC/REV

SCALE 5:16
 SHEET 2 OF 2

DRAWING NUMBER
 11-90045-0000-0