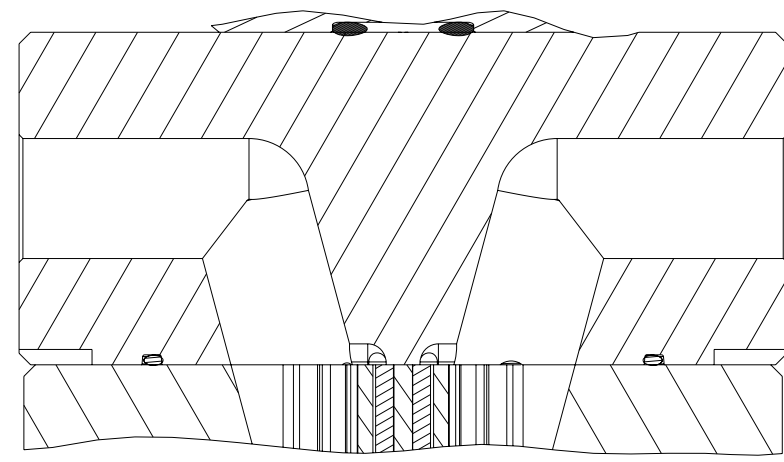
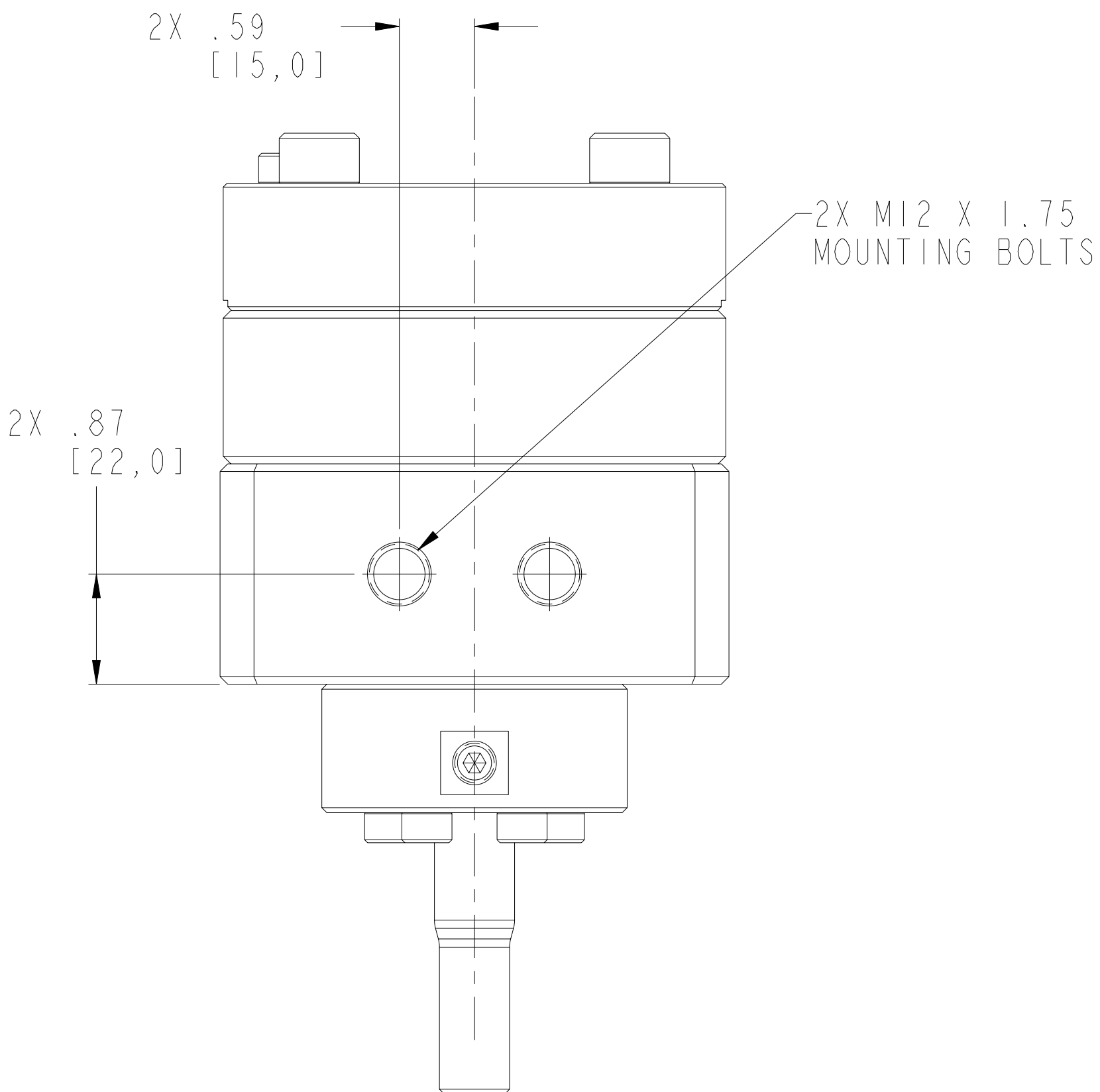
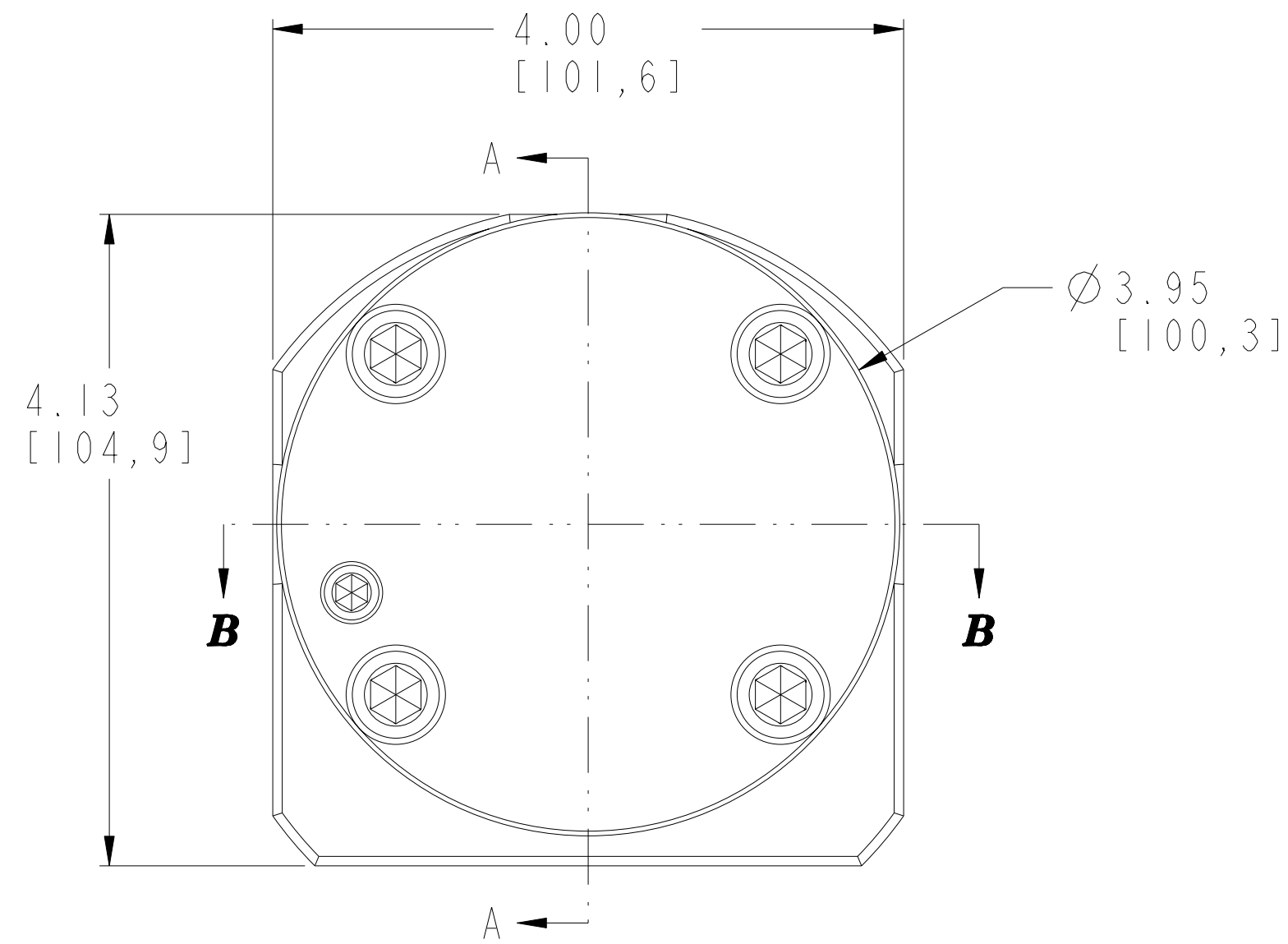


REVISIONS			
LTR	DESCRIPTION	DATE	ECN NO.
A	PLUG WAS 18-73000-0007-1	07/26/07	128-2007

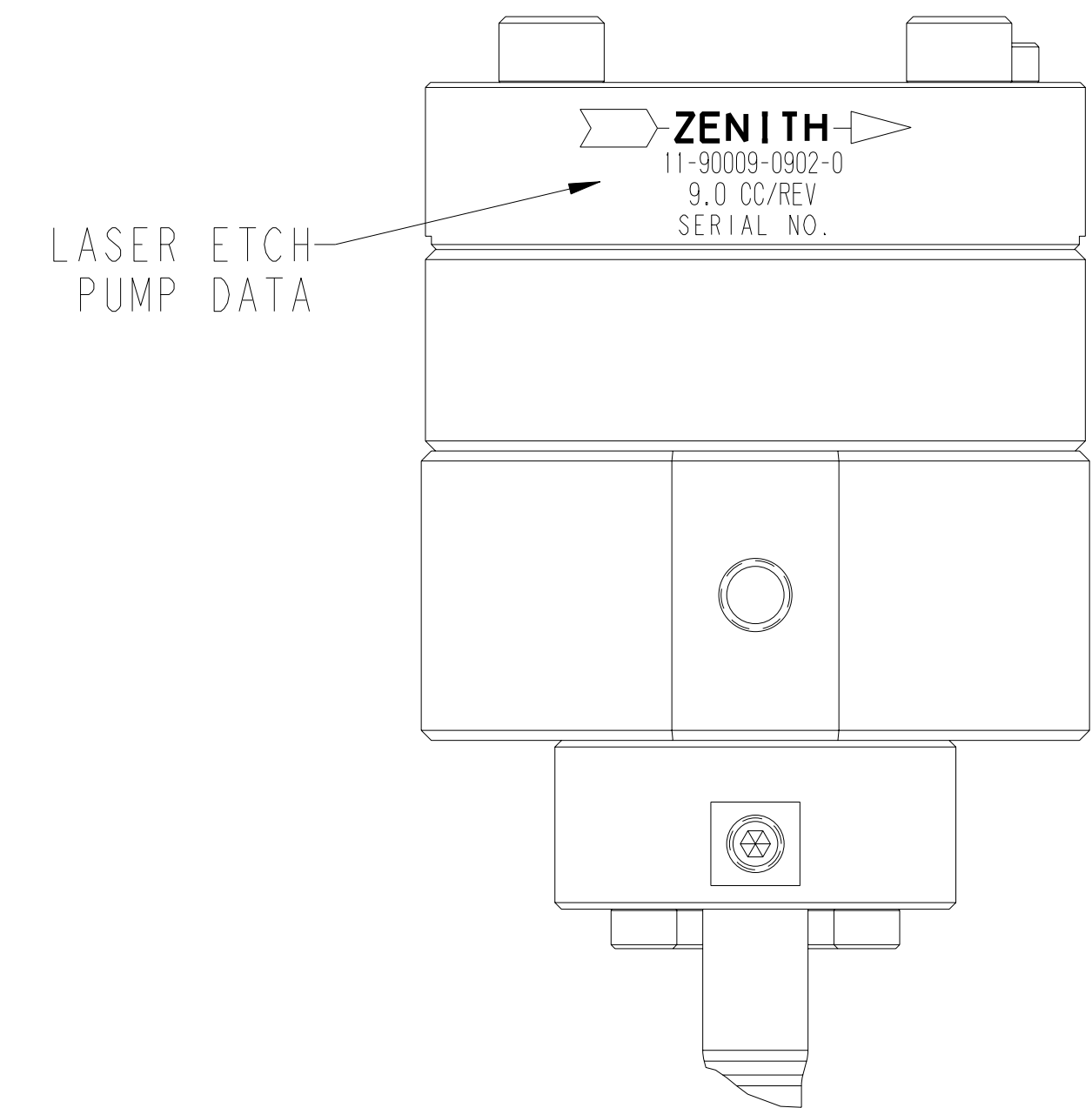
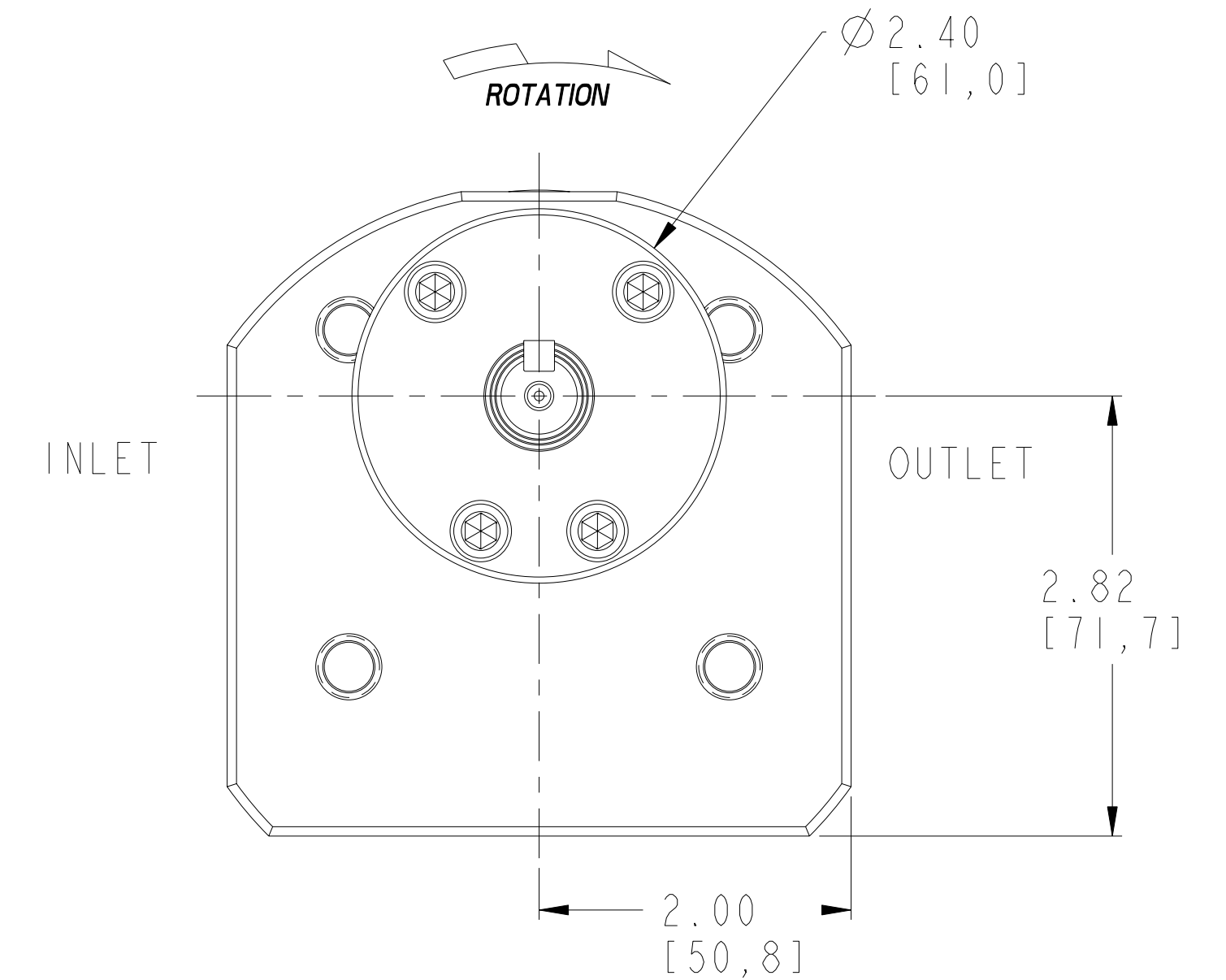
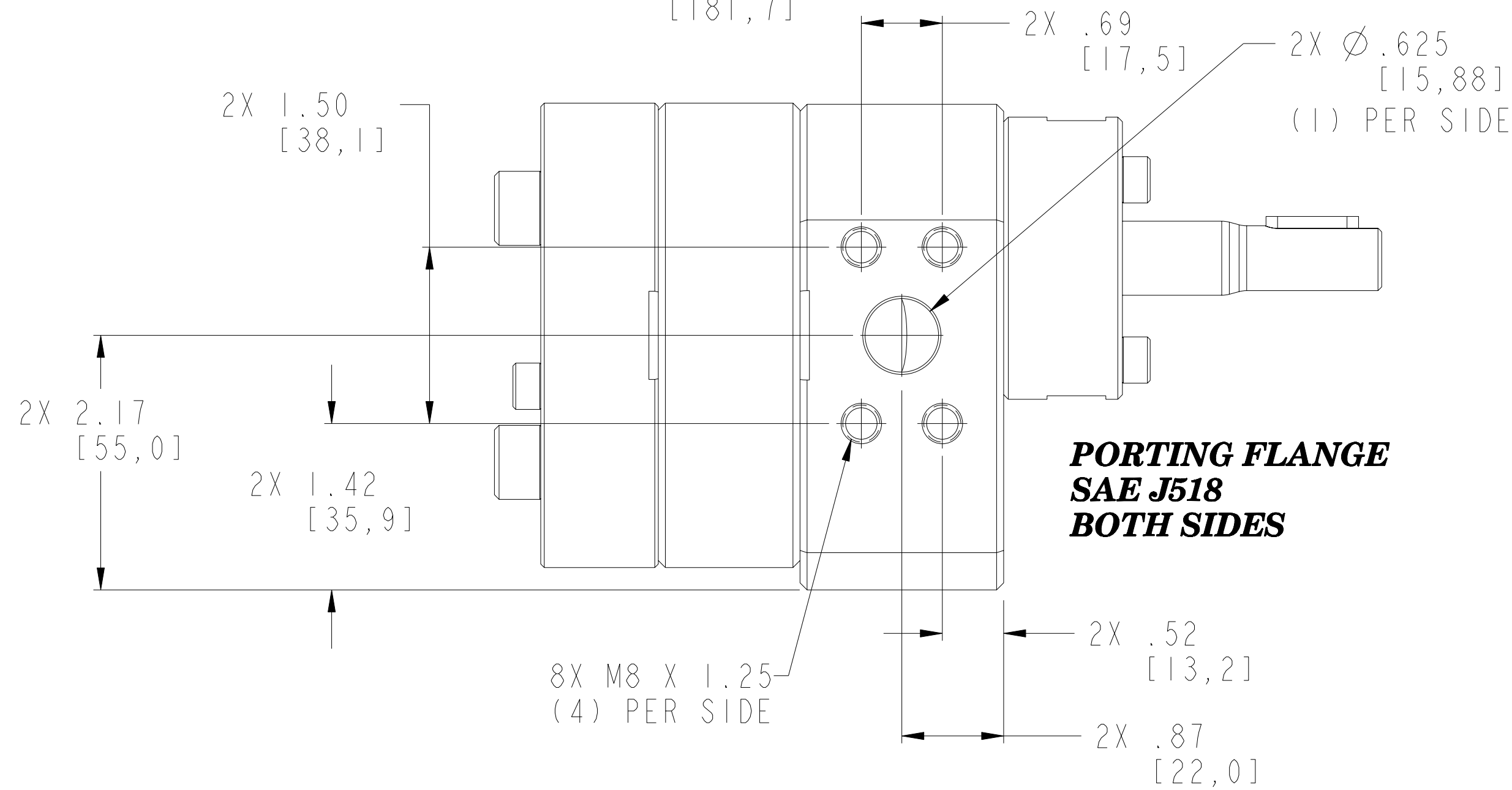
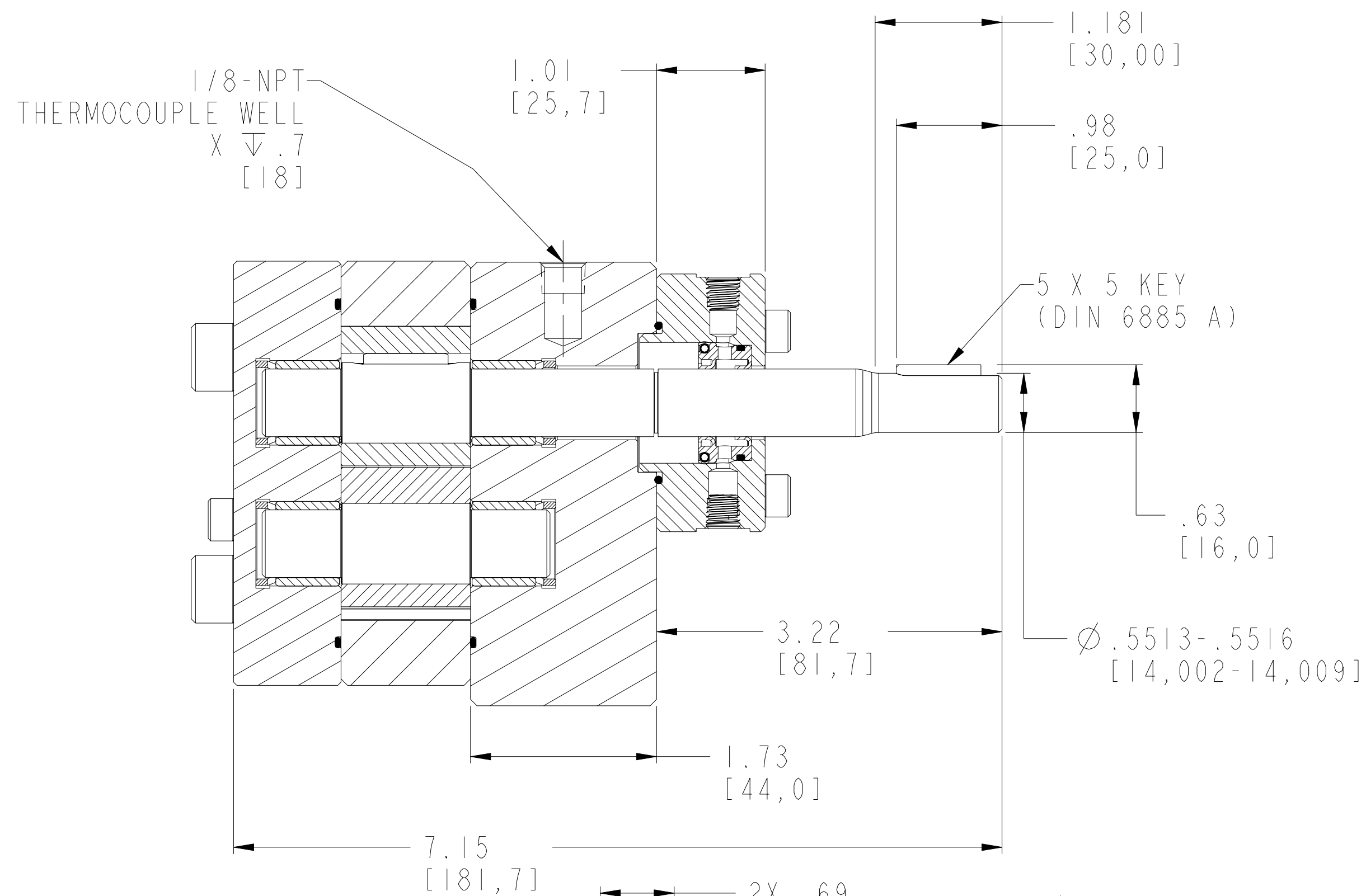


SECTION B-B

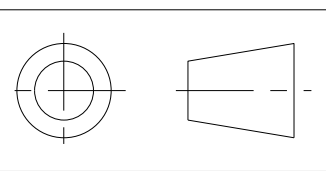


TORQUE CHART
M6 BOLTS LUBRICATED = 70 lb.-in. (7.9 N-m)
M10 BOLTS LUBRICATED = 335 lb.-in. (37.8 N-m)
M8 BOLTS (FLANGE) LUBRICATED = 169 lb.-in. (19.1 N-m)
M12 BOLTS (MOUNTING) LUBRICATED = 580 lb.-in. (66.0 N-m)

SECTION A-A



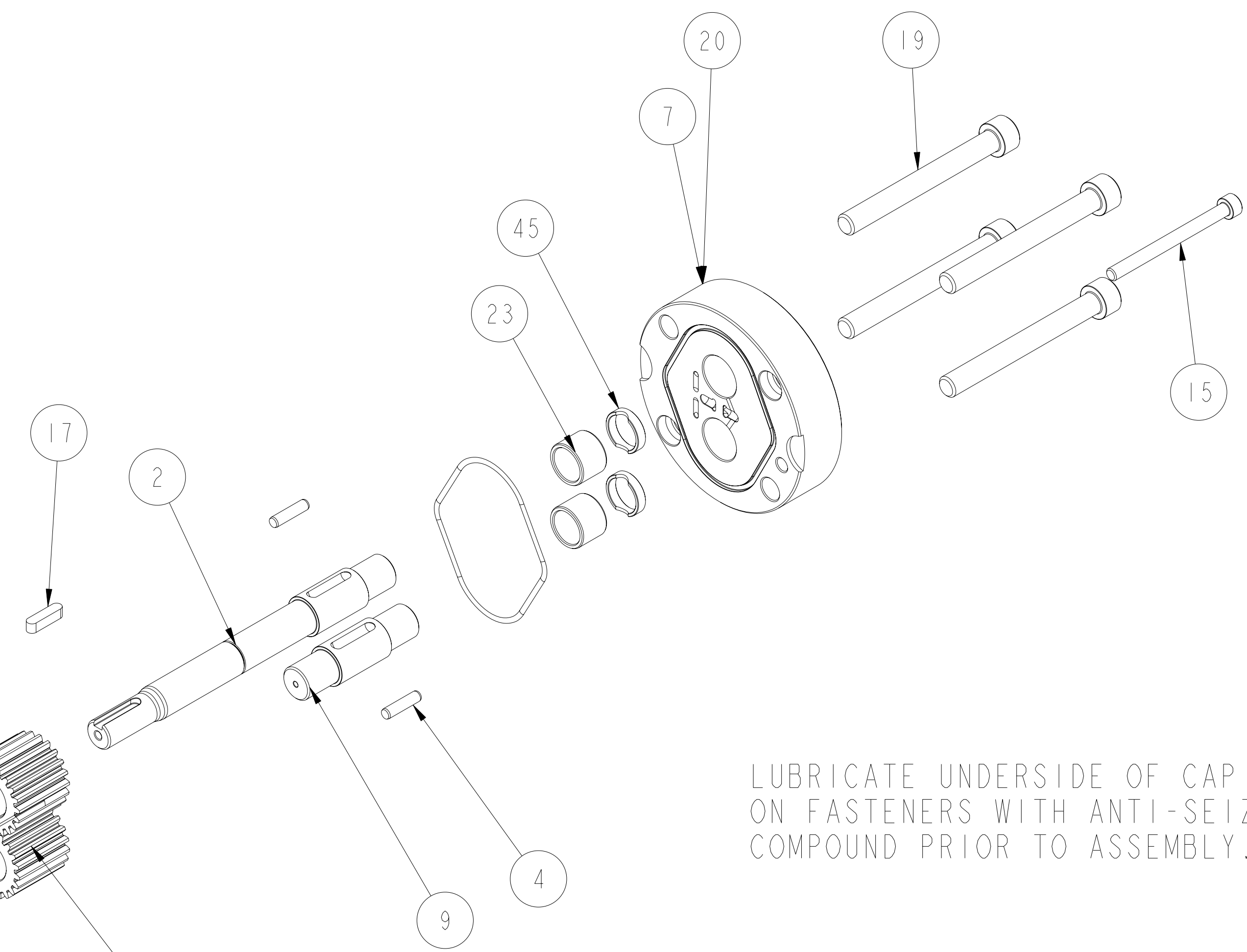
INTERPRET PER ASME-Y14.5M 1994



THIS DOCUMENT CONTAINS INFORMATION THAT IS CONFIDENTIAL AND PROPRIETARY TO ZENITH PUMPS, COLFAX CORPORATION "COLFAX". THIS DOCUMENT IS FURNISHED ON THE UNDERSTANDING THAT THE DOCUMENT AND THE INFORMATION IT CONTAINS WILL NOT BE COPIED OR DISCLOSED TO OTHERS OR USED FOR ANY PURPOSE OTHER THAN CONDUCTING BUSINESS WITH COLFAX, AND WILL BE RETURNED AND ALL FURTHER USE DISCONTINUED UPON REQUEST BY COLFAX.	UNLESS OTHERWISE SPECIFIED DIMENSIONS ARE IN INCH TOLERANCES .XX ± 0.01 .XXX ± 0.005 ANG ± 0.5	DRAWN MBR 03/15/04 CHECKED	ZENITH PUMPS 5910 ELWIN BUCHANAN DRIVE SANFORD, NC 27330
	MATERIAL SEE BILL OF MATERIAL	PART WEIGHT = 48.339 LBS SURFACE AREA = 371.839 IN ² MODEL NUMBER = 119000909020 DRAWING = 119000909020	
		PRO/ENGINEER DRAWING SIZE D	SCALE 1:1 SHEET 1 OF 3 DRAWING NUMBER 11-90009-0902-0

ITEM No.	PART NUMBER	PART NAME	MATERIAL	QTY
	119000909020	C-9000 9.0 CC/REV RAN 902		1
8	146945200174	ASSEMBLY, FRONT PLATE		1
21	156945200384	PLATE, FRONT	ZPI222	1
45	150752000061	BUSHING, SPACER	316 S.S.	2
24	150453100091	BEARING, SLEEVE	ZPI186	2
5	152523000052	GEAR, DRIVING	ZP2724	2
4	185600800331	KEY, ROUND	303 SS	2
2	157956800742	SHAFT, DRIVE	ZP2724	1
9	150115600402	ARBOR	ZP2724	1
10	151609100601	DOWEL, HOLLOW	17-4PH	2
3	156925100554	PLATE, GEAR	ZPI222	1
7	146915100162	ASSEMBLY, REAR PLATE		1
20	156915100374	PLATE, REAR	ZPI222	1
45	150752000061	BUSHING, SPACER	316 S.S.	2
23	150453100091	BEARING, SLEEVE	ZPI186	2
34	187650402761	O-RING	PTFE ENCAPSULATED FLUOROCARBON	2
11	155401901031	HOUSING, LIP SEAL	316 S.S.	1
33	187650401891_INV	O-RING	PTFE ENCAPSULATED FLUOROCARBON	1
17	185600800051	KEY, SQUARE	STEEL 50-1 K	1
19	189341010902	SHCS M10X1.5 X 90 MM 316 SS		4
15	189340610702	SHCS M6X1 X 70MM 316 SS		1
18	189340610352	SHCS M6X1 X 35MM 316 SS		4
42	187300000161	PLUG, DRYSEAL TYPE	316 S.S.	2
12	147900400022	SUB-ASSEMBLY, ASSY INSTRUCTION		1
41	150013100652	SEAL ASSEMBLY TOOL	ACETAL COPOLYMER	1
13	187900401341	TANDEM LIP SEAL	CARB. FIBER FILLED PTFE	1

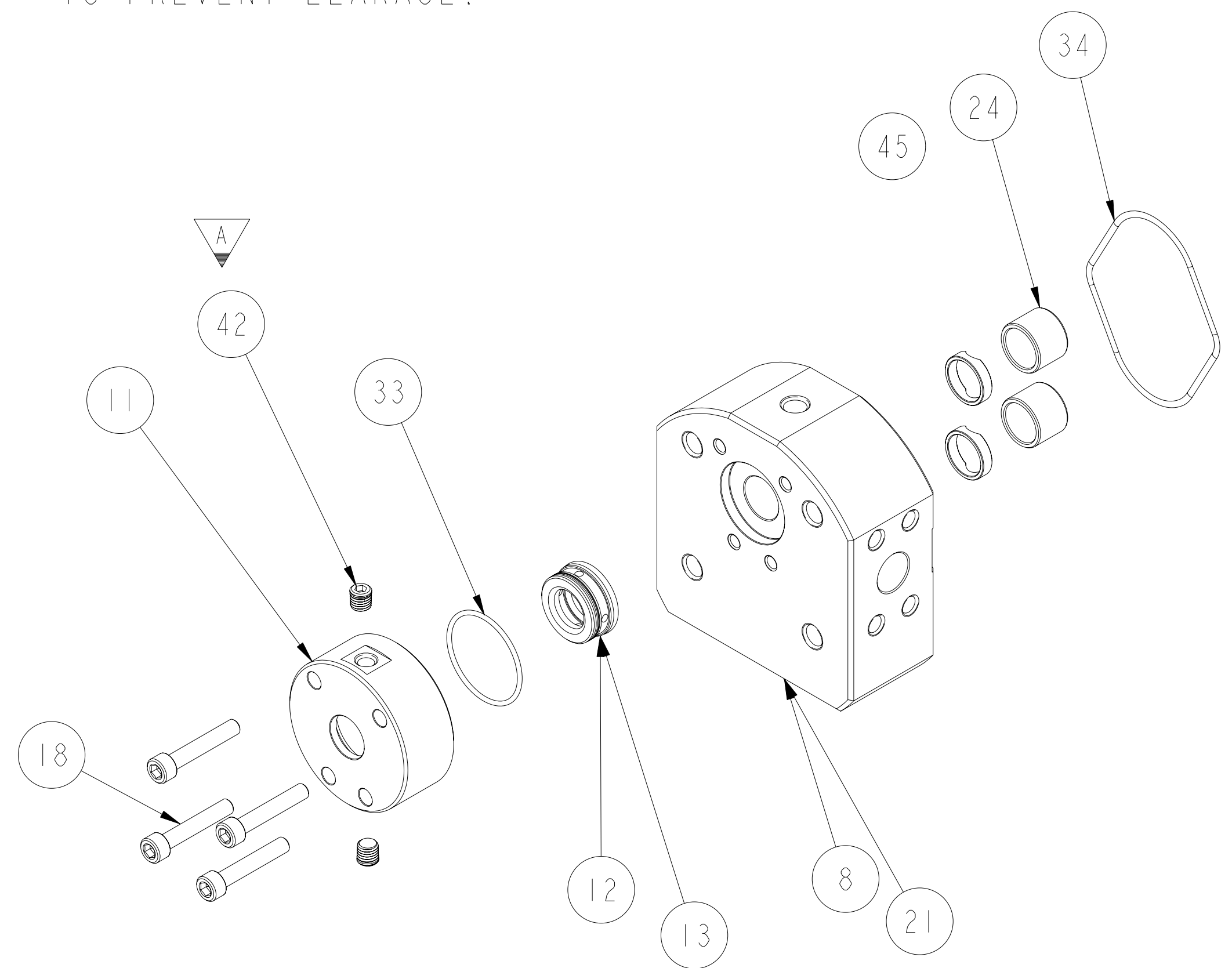
REVISIONS			
LTR	DESCRIPTION	DATE	ECN NO.
A	PLUG WAS 18-73000-0007-1	07/26/07	128-2007



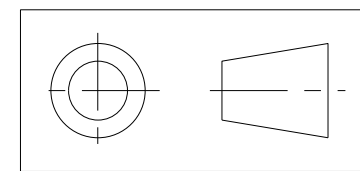
APPLY TEFLON TAPE TO PLUG THREADS WHEN ASSEMBLING INTO HOUSING TO PREVENT LEAKAGE.

LUBRICATE UNDERSIDE OF CAP & THREADS ON FASTENERS WITH ANTI-SEIZE COMPOUND PRIOR TO ASSEMBLY.

LUBRICATE ALL O-RINGS ON LIP SEAL WITH PARKER O-RING LUBE OR EQUIVALENT, PRIOR TO INSTALLING INTO HOUSING.

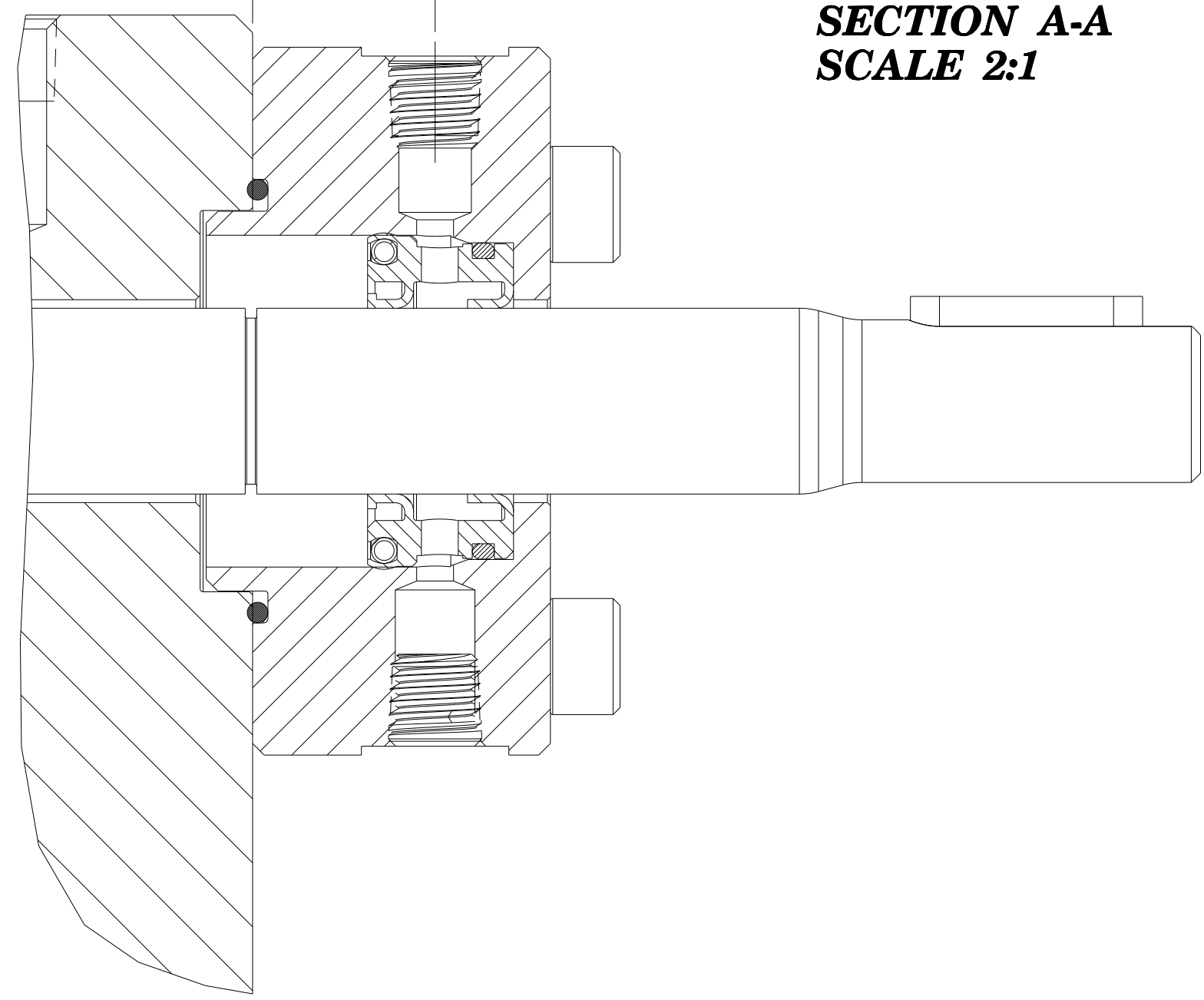


INTERPRET PER ASME-Y14.5M 1994

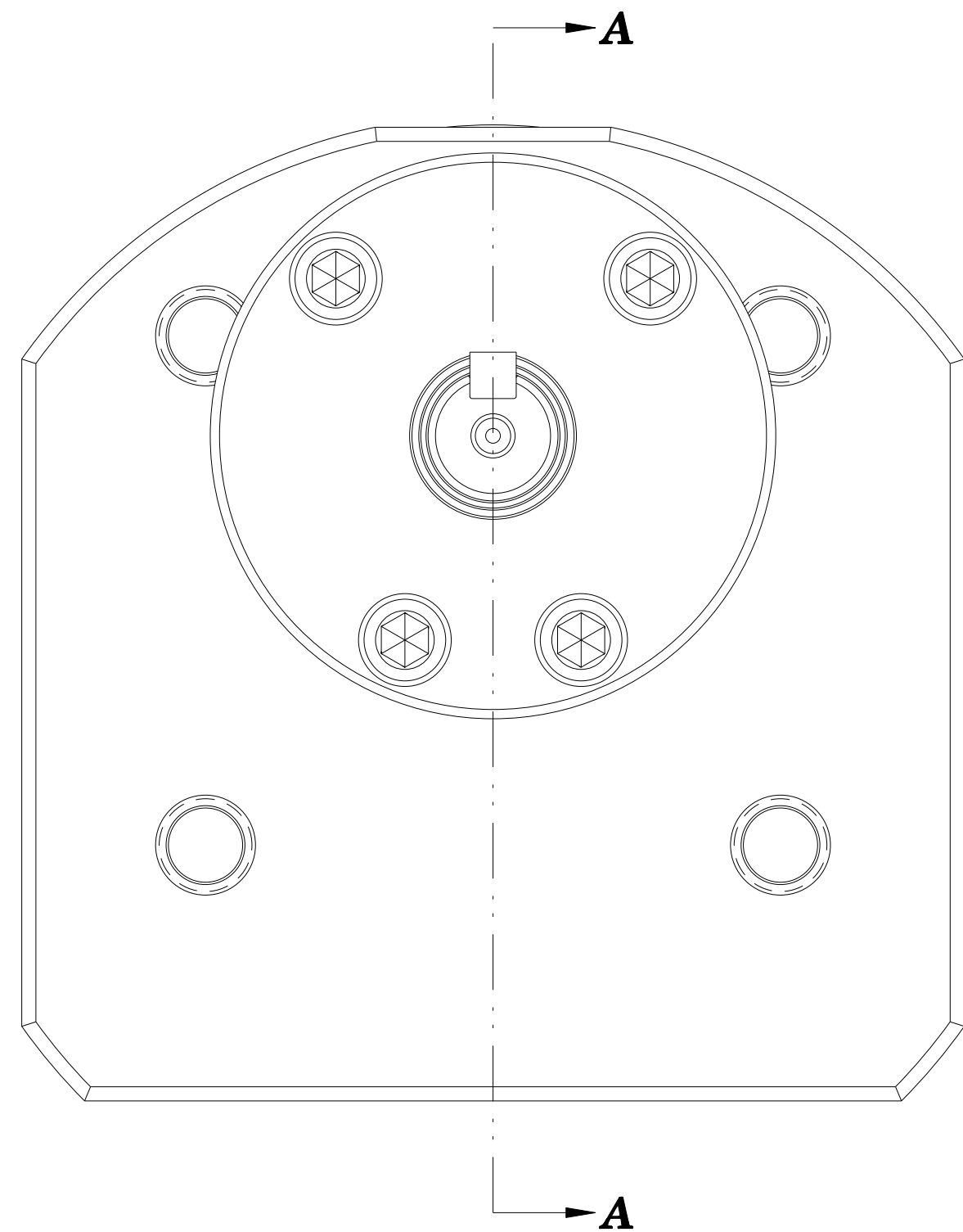


<small>THIS DOCUMENT CONTAINS INFORMATION THAT IS CONFIDENTIAL AND PROPRIETARY TO ZENITH PUMPS, COLFAX CORPORATION "COLFAX". THIS DOCUMENT IS FURNISHED ON THE UNDERSTANDING THAT THE DOCUMENT AND THE INFORMATION IT CONTAINS WILL NOT BE COPIED OR DISCLOSED TO OTHERS OR USED FOR ANY PURPOSE OTHER THAN CONDUCTING BUSINESS WITH COLFAX, AND WILL BE RETURNED AND ALL FURTHER USE DISCONTINUED UPON REQUEST BY COLFAX.</small>	<small>UNLESS OTHERWISE SPECIFIED DIMENSIONS ARE IN INCH TOLERANCES</small> .XX ± 0.01 .XXX ± 0.005 ANG ± 0.5	DRAWN MBR 03/15/04 CHECKED PART WEIGHT = 48.339 LBS SURFACE AREA = 371.839 IN ²	ZENITH PUMPS 5910 ELWIN BUCHANAN DRIVE SANFORD, NC 27330 C-9000 9.0 CC/REV RAN 902 SINGLE STREAM PUMP
	MATERIAL SEE BILL OF MATERIAL	MODEL NUMBER = 119000909020 DRAWING = 119000909020 PRO/ENGINEER DRAWING SIZE D	

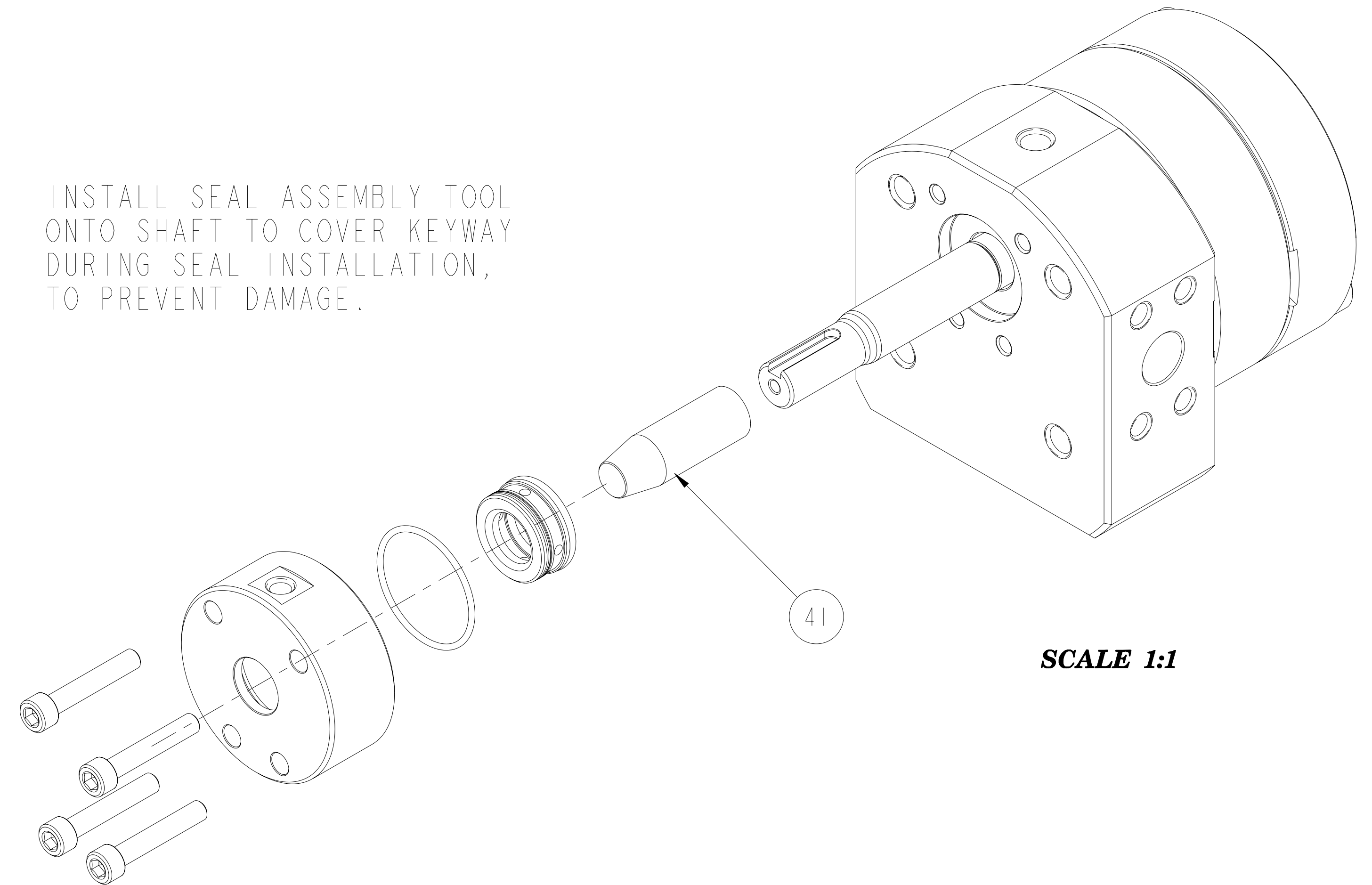
.62
[15,7]



SECTION A-A
SCALE 2:1



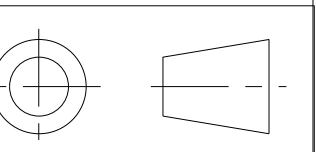
INSTALL SEAL ASSEMBLY TOOL
ONTO SHAFT TO COVER KEYWAY
DURING SEAL INSTALLATION,
TO PREVENT DAMAGE.




SCALE 1:1

REVISIONS			
LTR	DESCRIPTION	DATE	ECN NO.
A	PLUG WAS 18-73000-0007-1	07/26/07	128-2007

INTERPRET PER ASME-Y14.5M 1994



<small>THIS DOCUMENT CONTAINS INFORMATION THAT IS CONFIDENTIAL AND PROPRIETARY TO ZENITH PUMPS, COLFAX CORPORATION "COLFAX". THIS DOCUMENT IS FURNISHED ON THE UNDERSTANDING THAT THE DOCUMENT AND THE INFORMATION IT CONTAINS WILL NOT BE COPIED OR DISCLOSED TO OTHERS OR USED FOR ANY PURPOSE OTHER THAN CONDUCTING BUSINESS WITH COLFAX, AND WILL BE RETURNED AND ALL FURTHER USE DISCONTINUED UPON REQUEST BY COLFAX.</small>	<small>UNLESS OTHERWISE SPECIFIED DIMENSIONS ARE IN INCH TOLERANCES</small> .XX ± 0.01 .XXX ± 0.005 ANG ± 0.5	DRAWN MBR 03/15/04	 ZENITH PUMPS 5910 ELWIN BUCHANAN DRIVE SANFORD, NC 27330
		CHECKED	
MATERIAL SEE BILL OF MATERIAL		MODEL NUMBER = 119000909020 DRAWING = 119000909020	C-9000 9.0 CC/REV RAN 902 SINGLE STREAM PUMP
		PRO/ENGINEER DRAWING SIZE D	SCALE 3:2 SHEET 3 OF 3 DRAWING NUMBER 11-90009-0902-0