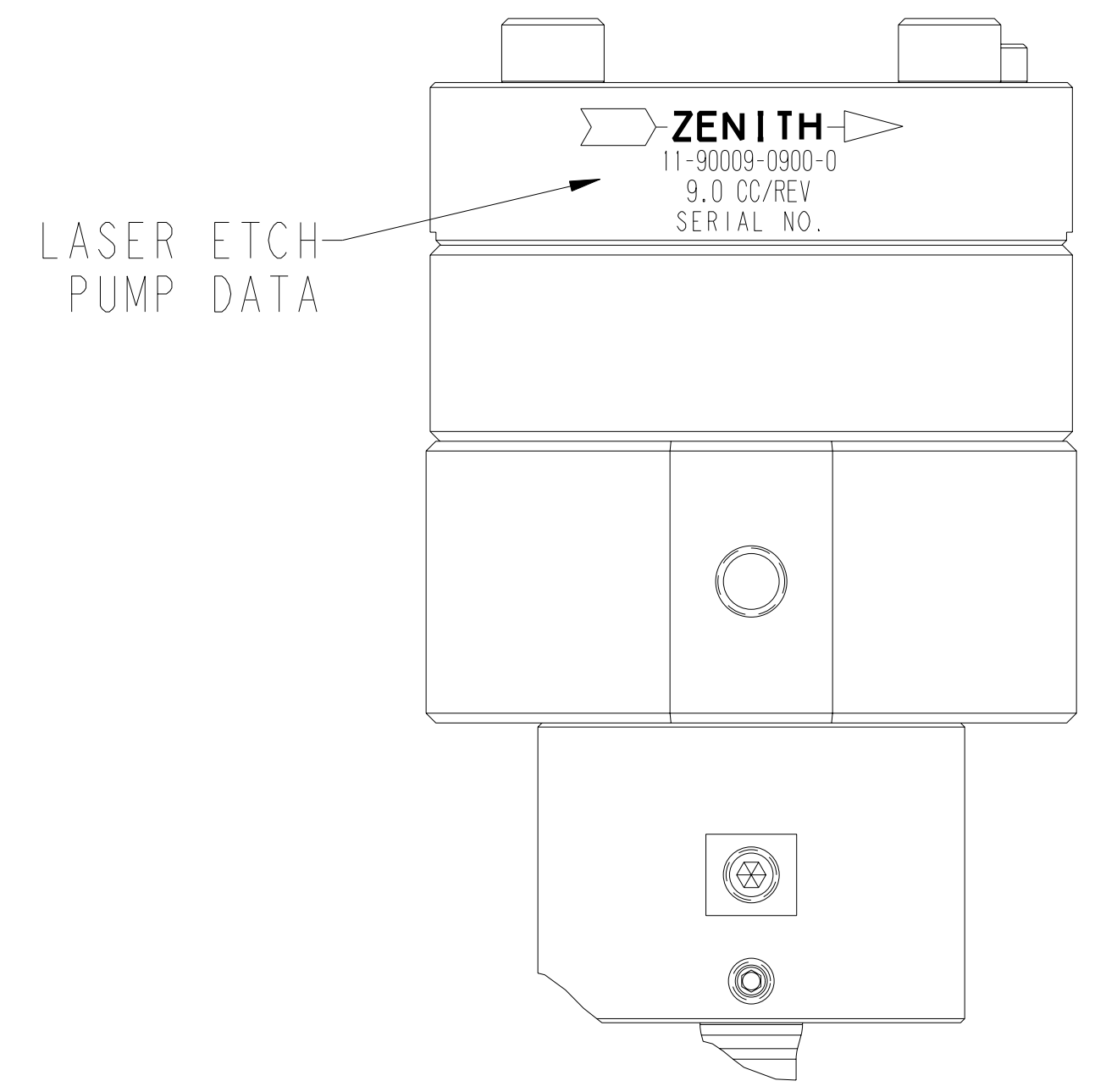
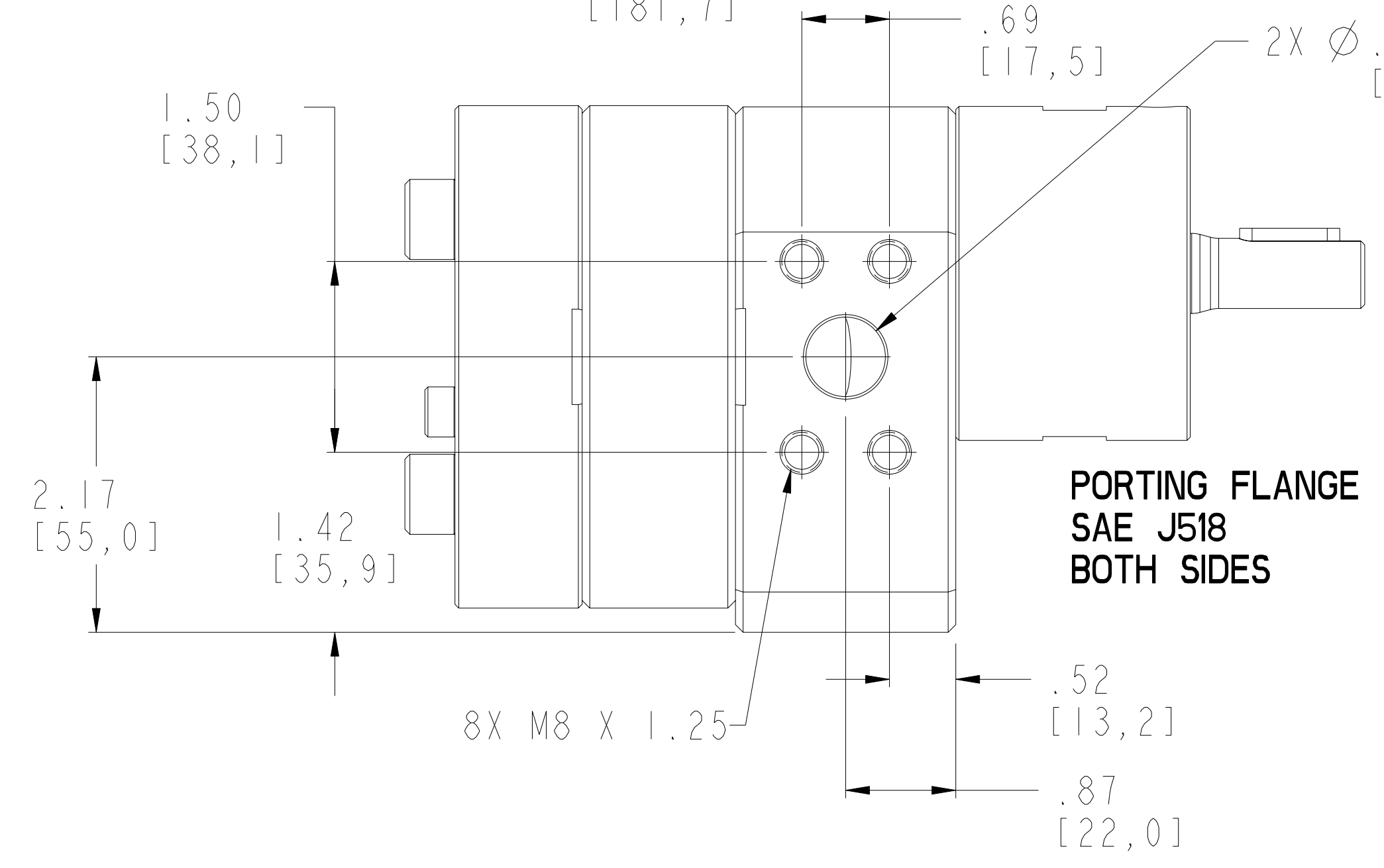
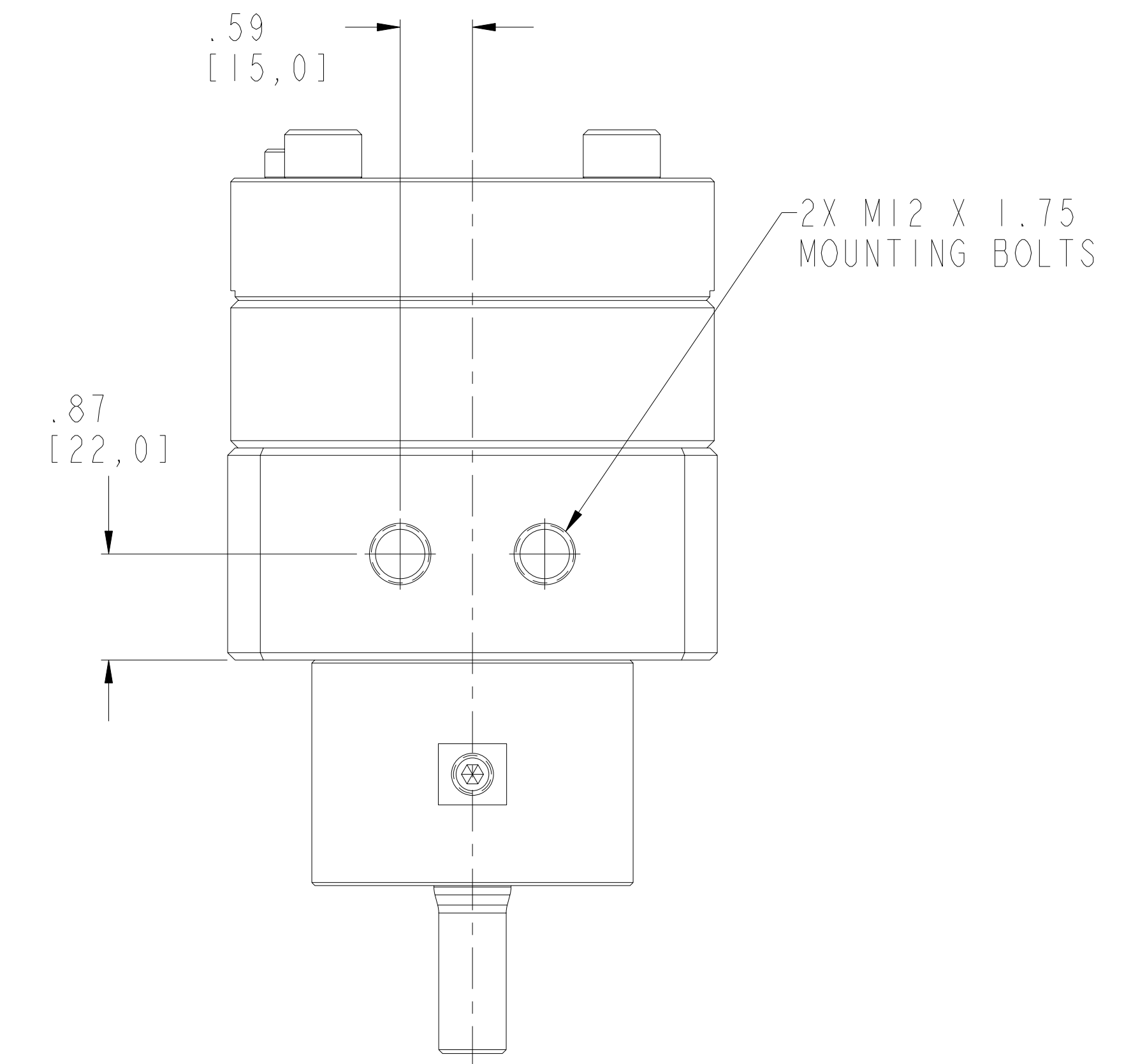
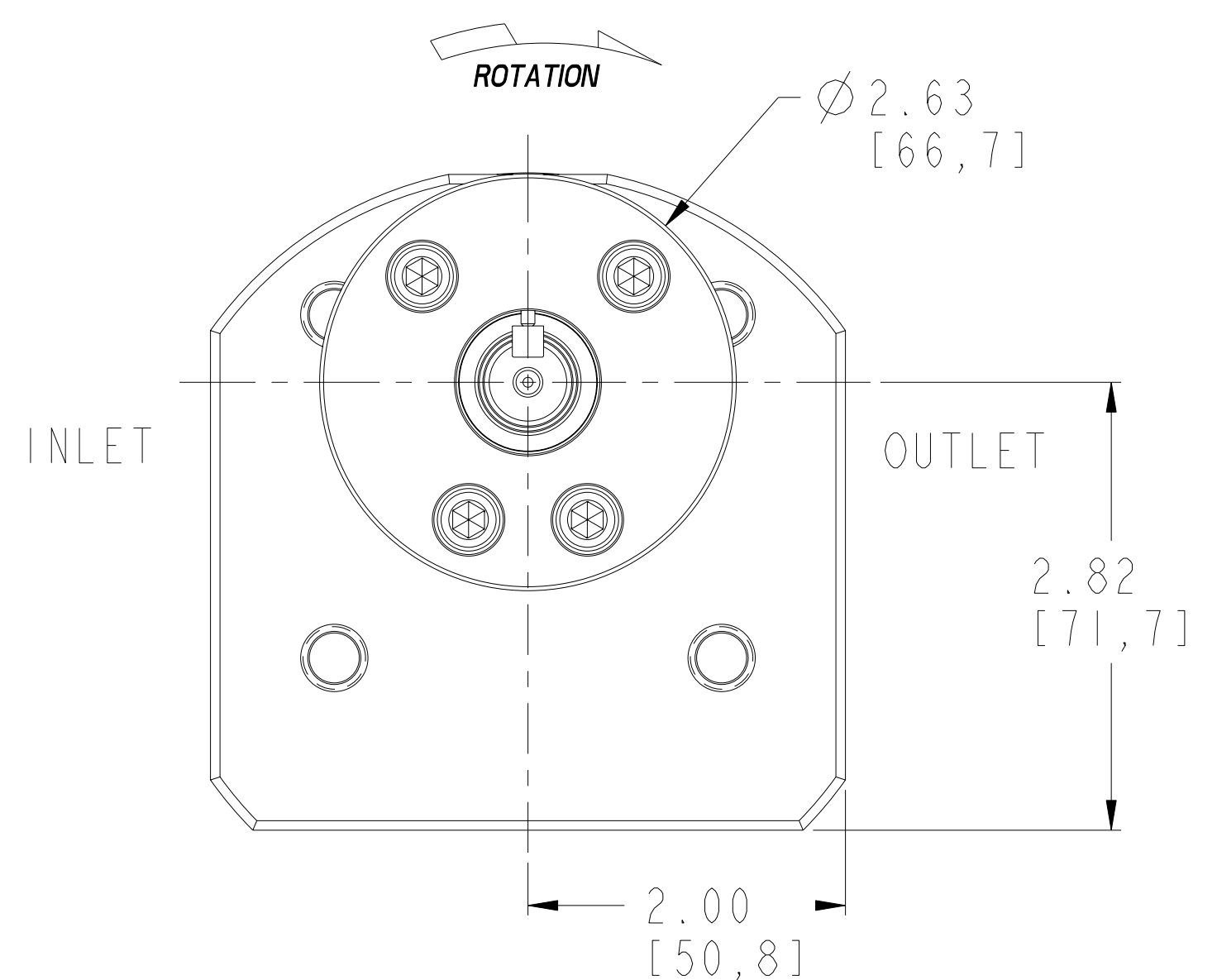
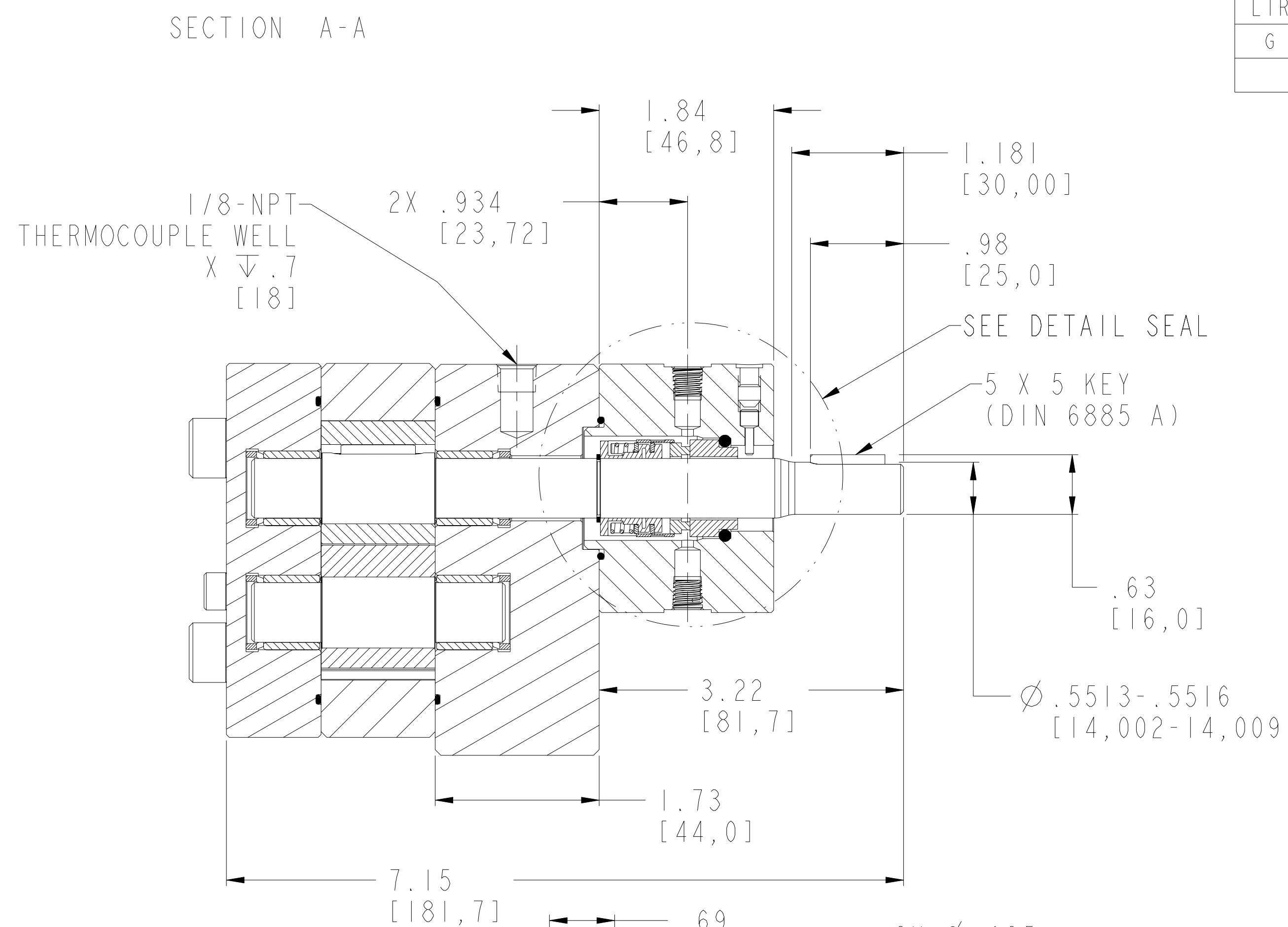
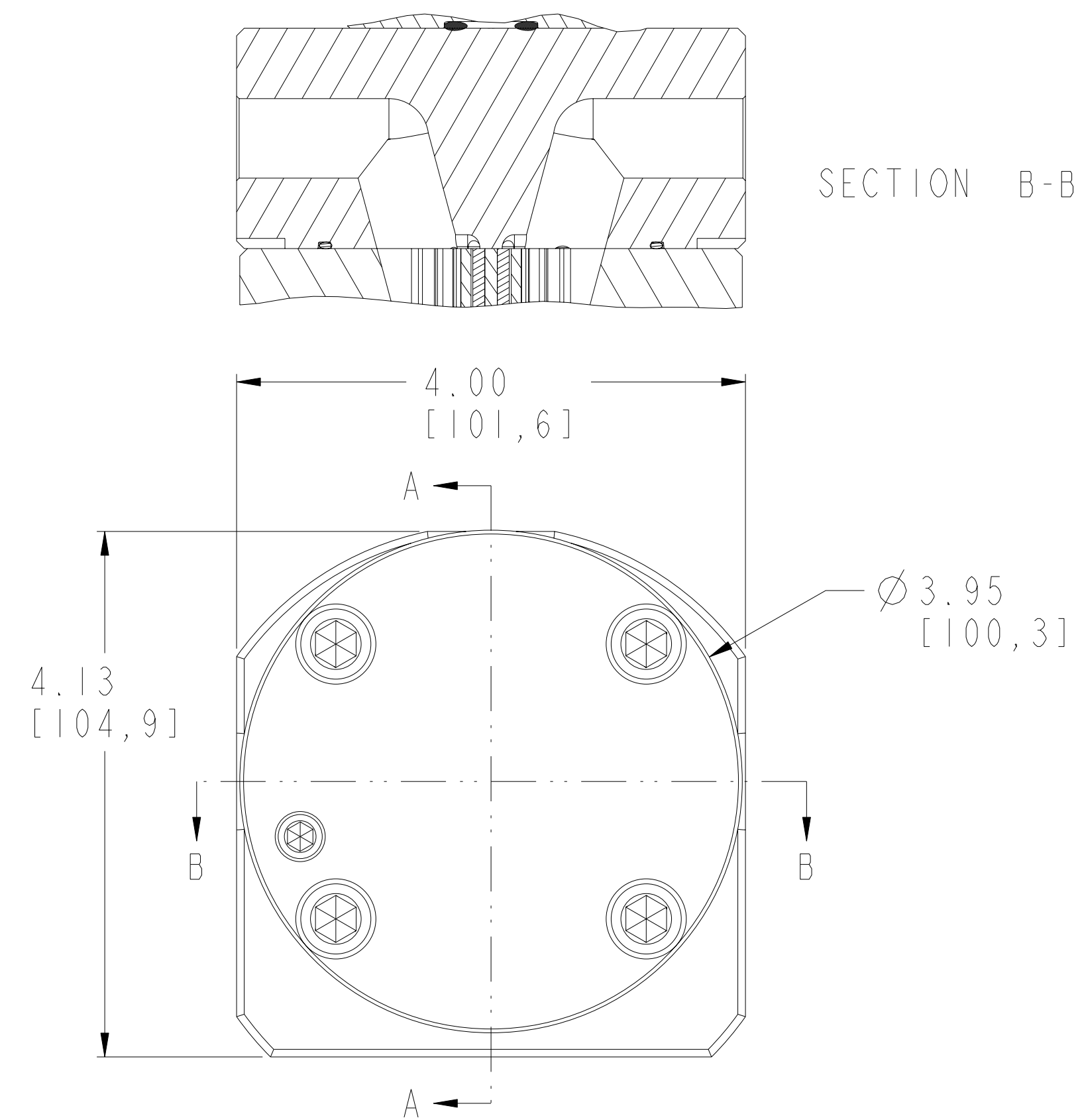


REVISIONS			
LTR	DESCRIPTION	DATE	ECN NO.
G	PLUG WAS 18-73000-0007-1	07/26/07	128-2007



INTERPRET PER ASME-Y14.5M 1994

TORQUE CHART
M6 BOLTS LUBRICATED = 70 lb.-in. (7.9 N-m)
M10 BOLTS LUBRICATED = 335 lb.-in. (37.8 N-m)
M8 BOLTS (FLANGE) LUBRICATED = 169 lb.-in. (19.1 N-m)
M12 BOLTS (MOUNTING) LUBRICATED = 580 lb.-in. (66.0 N-m)

THIS DOCUMENT CONTAINS INFORMATION THAT IS CONFIDENTIAL AND PROPRIETARY TO ZENITH PUMPS, COLFAX CORPORATION "COLFAX". THIS DOCUMENT IS FURNISHED ON THE UNDERSTANDING THAT THE DOCUMENT AND THE INFORMATION IT CONTAINS WILL NOT BE COPIED OR DISCLOSED TO OTHERS OR USED FOR ANY PURPOSE OTHER THAN CONDUCTING BUSINESS WITH COLFAX, AND WILL BE RETURNED AND ALL FURTHER USE DISCONTINUED UPON REQUEST BY COLFAX.

UNLESS OTHERWISE SPECIFIED DIMENSIONS ARE IN INCH TOLERANCES
 .XX ± 0.01
 .XXX ± 0.005
 ANG ± 0.5

MATERIAL SEE BILL OF MATERIAL SHEET 2 OF 3

DRAWN BNS 05.10.99
 CHECKED
 PART WEIGHT = 48.339 LBS
 SURFACE AREA = 371.839 IN²
 MODEL NUMBER = 119000909000
 DRAWING = 119000909000
 PRO/ENGINEER DRAWING SIZE D

ZENITH PUMPS
 5910 ELWIN BUCHANAN DRIVE
 SANFORD, NC 27330

zenith Pumps

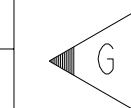
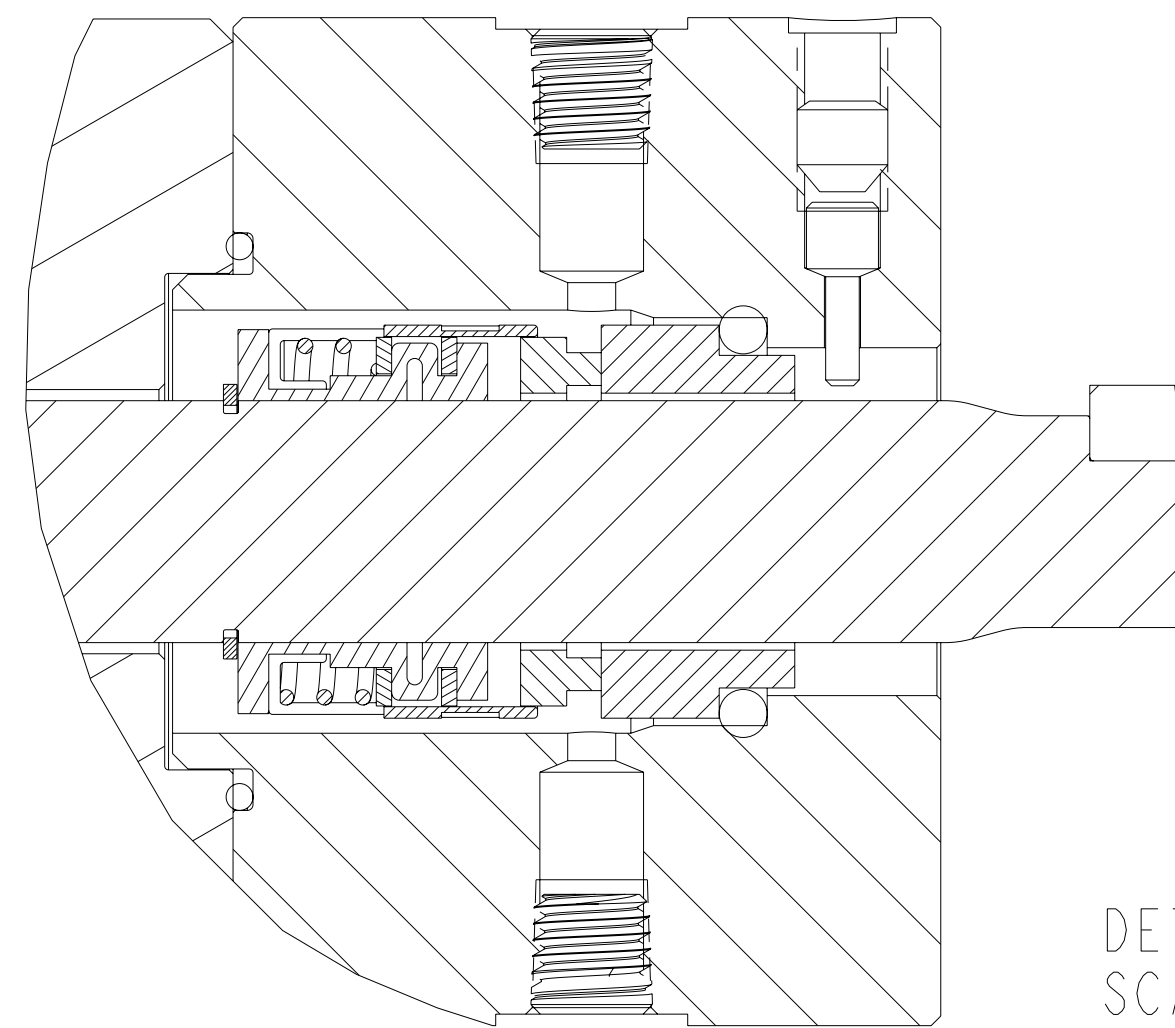
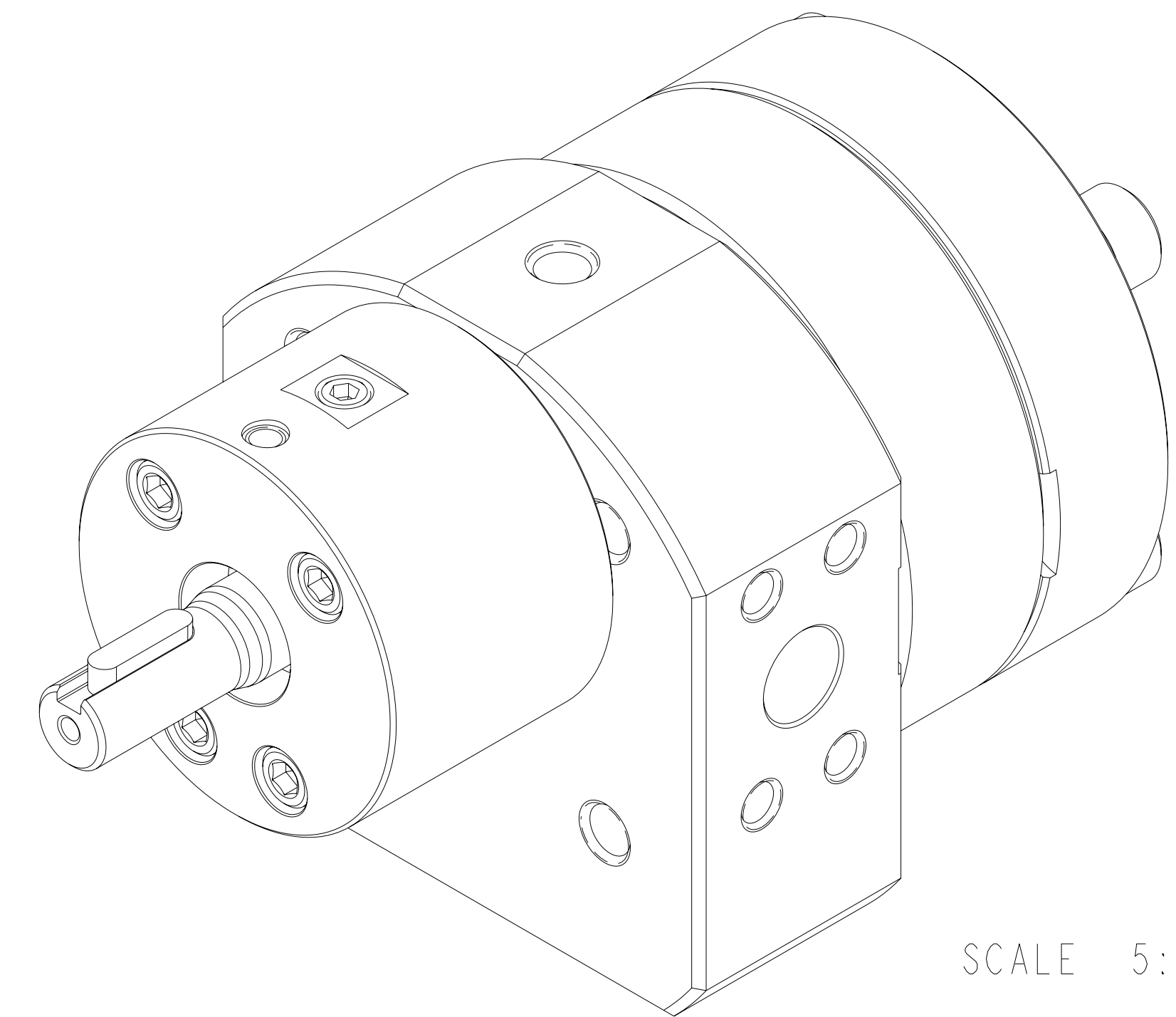
C-9000 TYPE PUMP
 9.0 CC/REV RANDOM 900

SCALE 1:1
 SHEET 1 OF 3

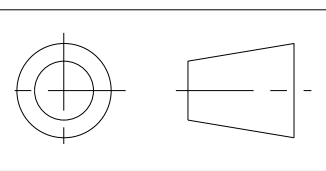
DRAWING NUMBER
 11-90009-0900-0

ITEM No.	PART NUMBER	PART NAME	MATERIAL	QTY
	119000909000	C-9000 TYPE PUMP		1
8	146945200174	ASSEMBLY, FRONT PLATE		1
21	156945200384	PLATE, FRONT	ZP1222	1
45	150752000061	BUSHING, SPACER	316 S.S.	2
24	150453100091	BEARING, SLEEVE	ZP1186	2
5	152523000052	GEAR, DRIVING	ZP2724	2
4	185600800331	KEY, ROUND	303 SS	2
2	157956800742	SHAFT, DRIVE	ZP2724	1
9	150115600402	ARBOR	ZP2724	1
10	151609100601	DOWEL, HOLLOW	17-4PH	2
3	156925100554	PLATE, GEAR	ZP1222	1
7	146915100162	ASSEMBLY, REAR PLATE		1
20	156915100374	PLATE, REAR	ZP1222	1
45	150752000061	BUSHING, SPACER	316 S.S.	2
23	150453100091	BEARING, SLEEVE	ZP1186	2
34	187650402761	O-RING	PTFE ENCAPSULATED FLUOROCARBON	2
11	155402000343	HOUSING, SEAL	ZP1222	1
13	187900300481	TYPE 502 MECHANICAL SEAL		1
33	187650401891_INV	O-RING	PTFE ENCAPSULATED FLUOROCARBON	1
17	185600800051	KEY, SQUARE	STEEL 50-1 K	1
30	150013100652	SEAL ASSEMBLY TOOL	ACETAL COPOLYMER	1
19	189341010902	SHCS M10X1.5 X 90 MM 316 SS		4
15	189340610702	SHCS M6X1 X 70MM 316 SS		1
18	189340610502	SHCS M6X1 X 50MM 316 SS		4
40	151609100401	PIN, DOWEL	ZP1222	1
41	189300000351	M6 X 1.0P SOCKET SET SCREW	STAINLESS STEEL	1
42	187300000161	PLUG, DRYSEAL TYPE	316 S.S.	2
16	181831800142	RING - RETAINING	PH 15-7 MO	1

REVISIONS			
LTR	DESCRIPTION	DATE	ECN NO.
G	PLUG WAS 18-73000-0007-1	07/26/07	128-2007



INTERPRET PER ASME-Y14.5M 1994



<small>THIS DOCUMENT CONTAINS INFORMATION THAT IS CONFIDENTIAL AND PROPRIETARY TO ZENITH PUMPS, COLFAX CORPORATION "COLFAX". THIS DOCUMENT IS FURNISHED ON THE UNDERSTANDING THAT THE DOCUMENT AND THE INFORMATION IT CONTAINS WILL NOT BE COPIED OR DISCLOSED TO OTHERS OR USED FOR ANY PURPOSE OTHER THAN CONDUCTING BUSINESS WITH COLFAX, AND WILL BE RETURNED AND ALL FURTHER USE DISCONTINUED UPON REQUEST BY COLFAX.</small>	<small>UNLESS OTHERWISE SPECIFIED DIMENSIONS ARE IN INCH TOLERANCES</small> .XX ± 0.01 .XXX ± 0.005 ANG ± 0.5	DRAWN BNS 05.10.99	ZENITH PUMPS 5910 ELWIN BUCHANAN DRIVE SANFORD, NC 27330
		CHECKED	
MATERIAL SEE BILL OF MATERIAL SHEET 2 OF 3	MODEL NUMBER = 119000909000 DRAWING = 119000909000	PRO/ENGINEER DRAWING	C-9000 TYPE PUMP 9.0 CC/REV RANDOM 900 SCALE 1:2 SHEET 2 OF 3
		SIZE D	DRAWING NUMBER 11-90009-0900-0

TO PREVENT DAMAGE
INSTALL SEAL ASSEMBLY TOOL
ONTO SHAFT TO COVER KEYWAY
DURING SEAL INSTALLIATION.

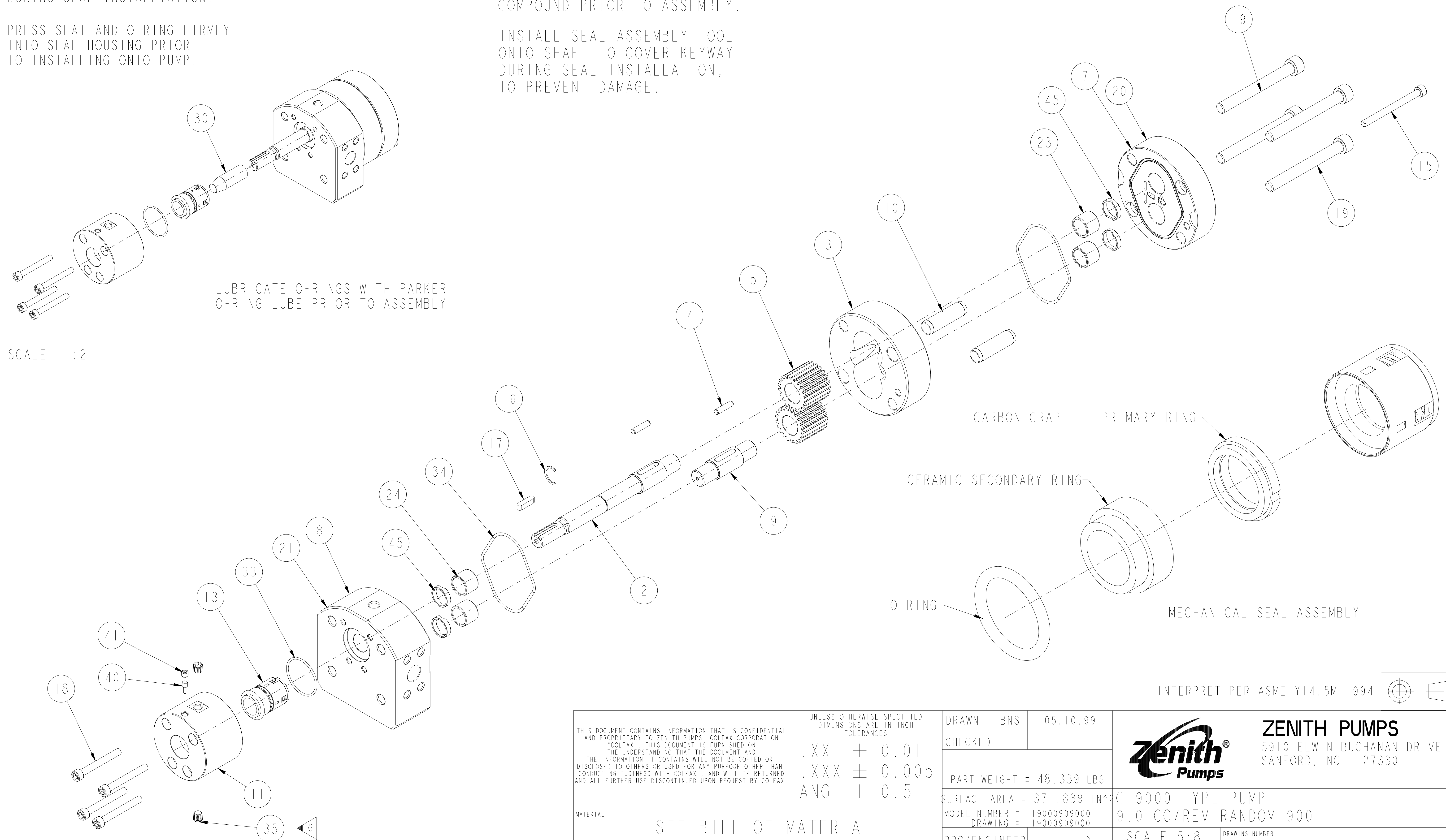
PRESS SEAT AND O-RING FIRMLY
INTO SEAL HOUSING PRIOR
TO INSTALLING ONTO PUMP.

LUBRICATE UNDERSIDE OF CAP & THREADS
ON FASTENERS WITH ANTI-SEIZE
COMPOUND PRIOR TO ASSEMBLY.

INSTALL SEAL ASSEMBLY TOOL
ONTO SHAFT TO COVER KEYWAY
DURING SEAL INSTALLATION,
TO PREVENT DAMAGE.

LUBRICATE O-RINGS WITH PARKER
O-RING LUBE PRIOR TO ASSEMBLY

SCALE 1:2



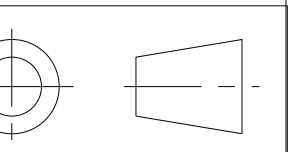
CARBON GRAPHITE PRIMARY RING

CERAMIC SECONDARY RING

O-RING

MECHANICAL SEAL ASSEMBLY

INTERPRET PER ASME-Y14.5M 1994



<p>THIS DOCUMENT CONTAINS INFORMATION THAT IS CONFIDENTIAL AND PROPRIETARY TO ZENITH PUMPS, COLFAX CORPORATION "COLFAX". THIS DOCUMENT IS FURNISHED ON THE UNDERSTANDING THAT THE DOCUMENT AND THE INFORMATION IT CONTAINS WILL NOT BE COPIED OR DISCLOSED TO OTHERS OR USED FOR ANY PURPOSE OTHER THAN CONDUCTING BUSINESS WITH COLFAX, AND WILL BE RETURNED AND ALL FURTHER USE DISCONTINUED UPON REQUEST BY COLFAX.</p>	<p>UNLESS OTHERWISE SPECIFIED DIMENSIONS ARE IN INCH TOLERANCES</p>		<p>DRAWN BNS 05.10.99</p>	<p>Zenith Pumps 5910 ELWIN BUCHANAN DRIVE SANFORD, NC 27330</p>	<p>ZENITH PUMPS C-9000 TYPE PUMP 9.0 CC/REV RANDOM 900</p>
	<p>.XX ± 0.01 .XXX ± 0.005 ANG ± 0.5</p>	<p>CHECKED</p>	<p>PART WEIGHT = 48.339 LBS</p>		
<p>MATERIAL</p>	<p>SEE BILL OF MATERIAL SHEET 2 OF 3</p>		<p>MODEL NUMBER = 119000909000 DRAWING = 119000909000</p>	<p>SCALE 5:8 SHEET 3 OF 3</p>	<p>DRAWING NUMBER 11-90009-0900-0</p>

REVISIONS			
LTR	DESCRIPTION	DATE	ECN NO.
G	PLUG WAS 18-73000-0007-1	07/26/07	128-2007