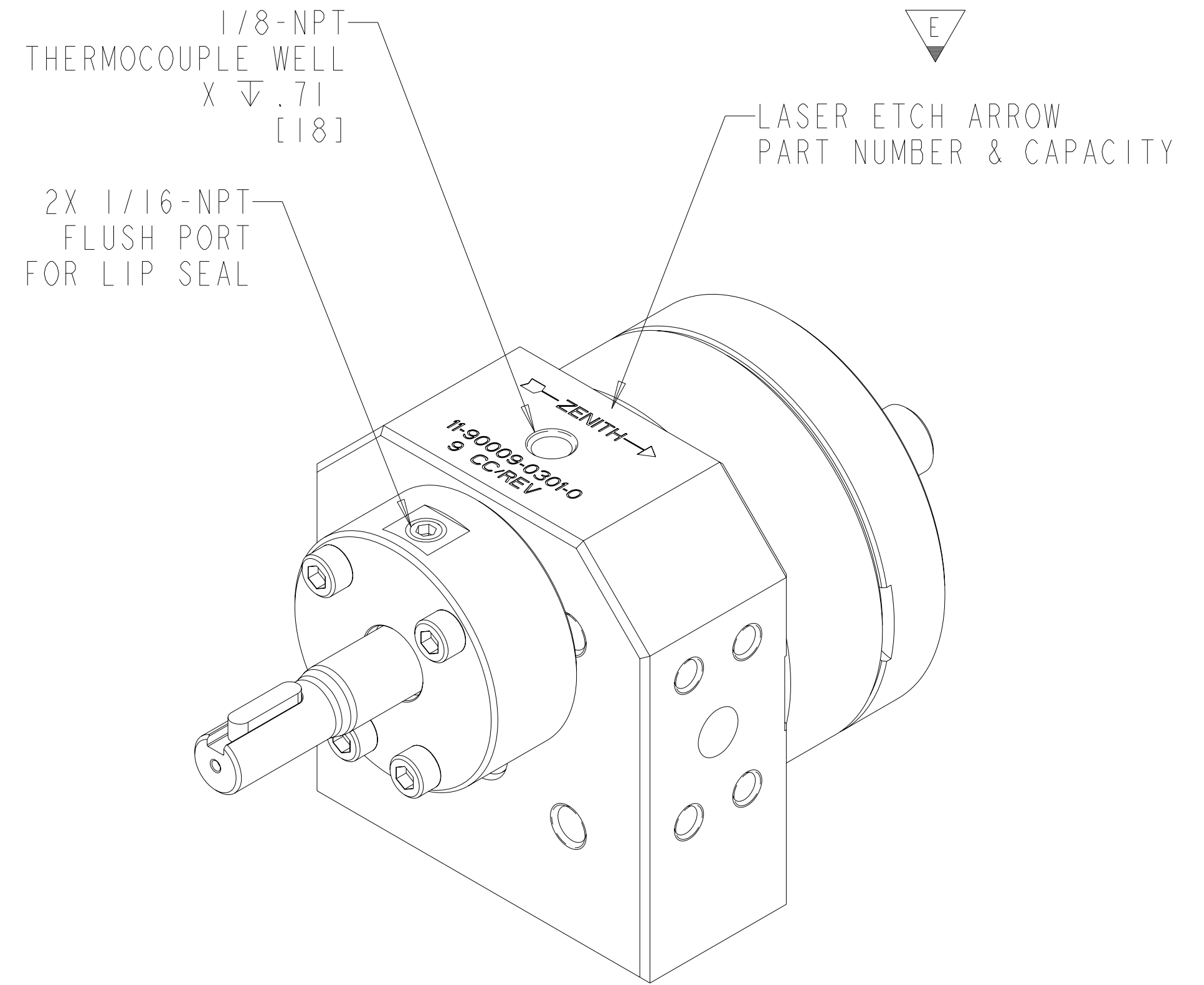
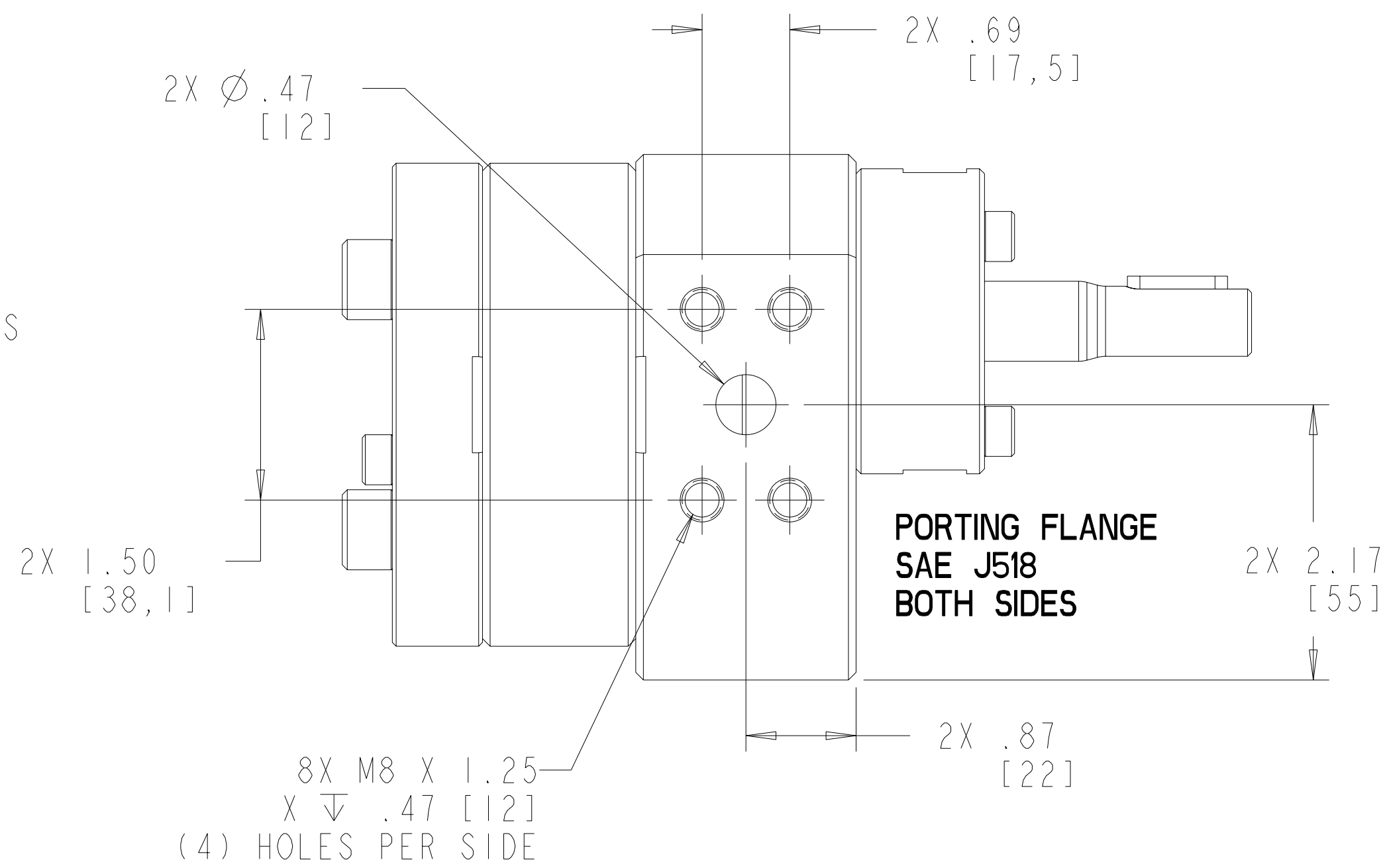
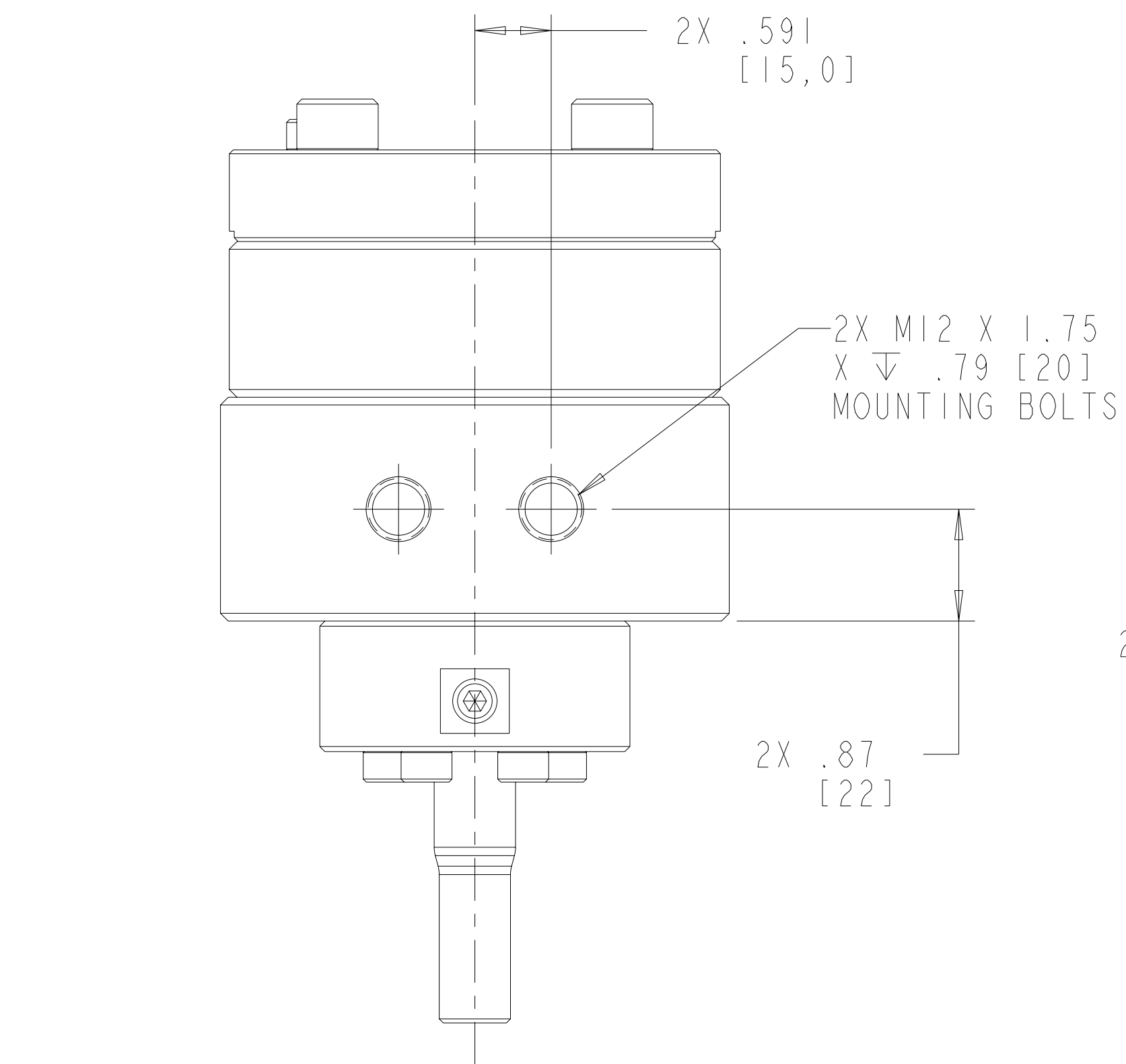
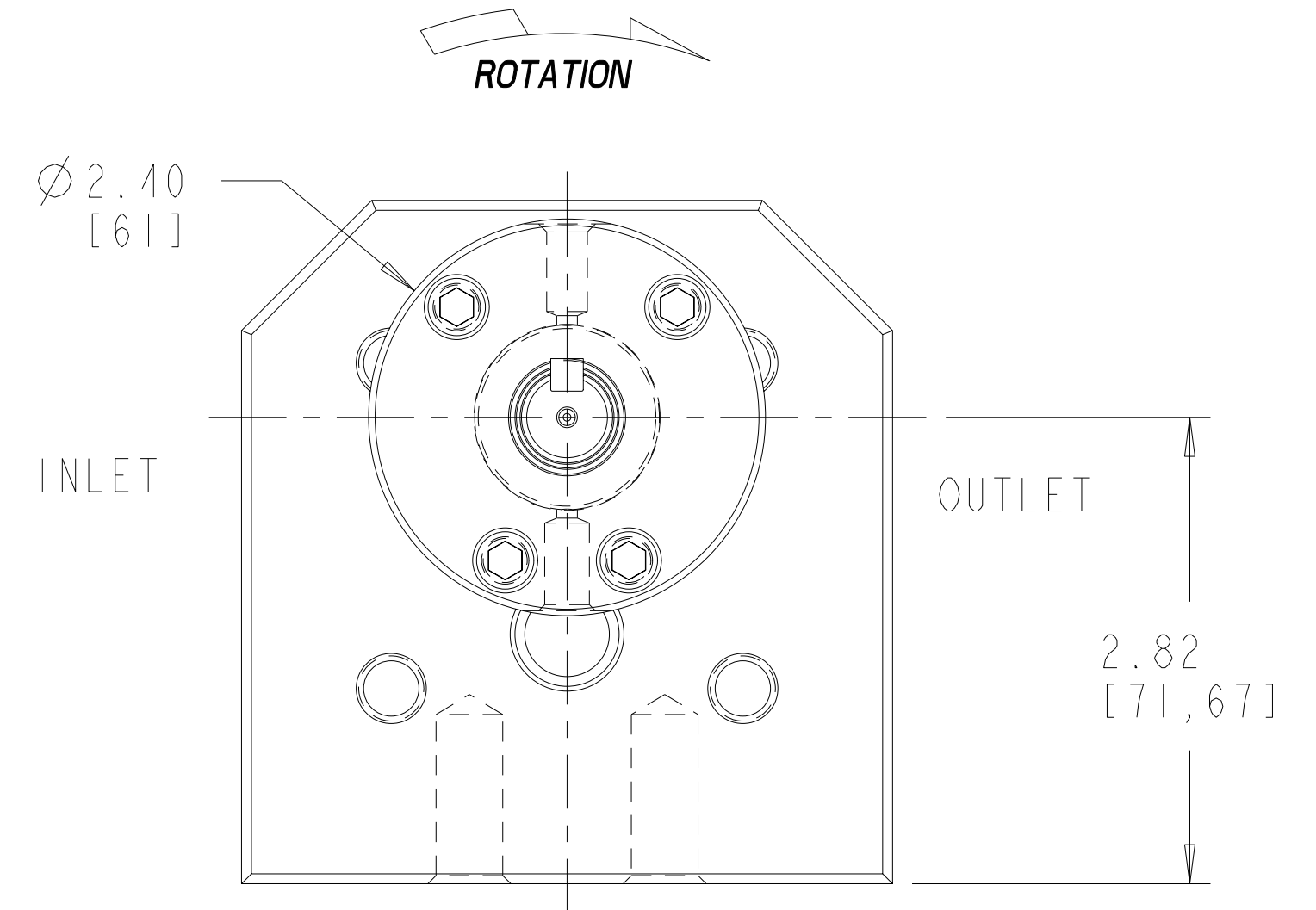
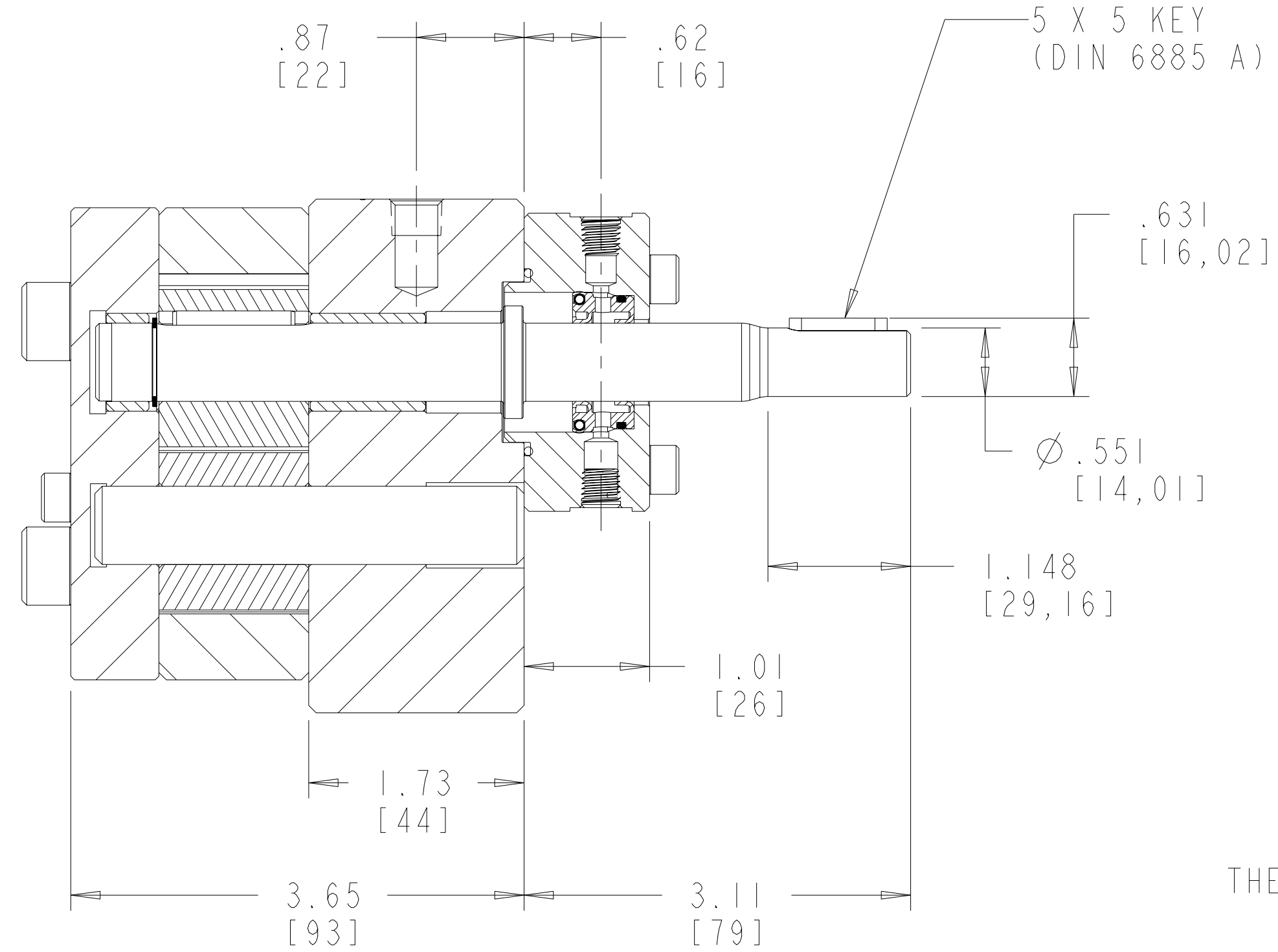
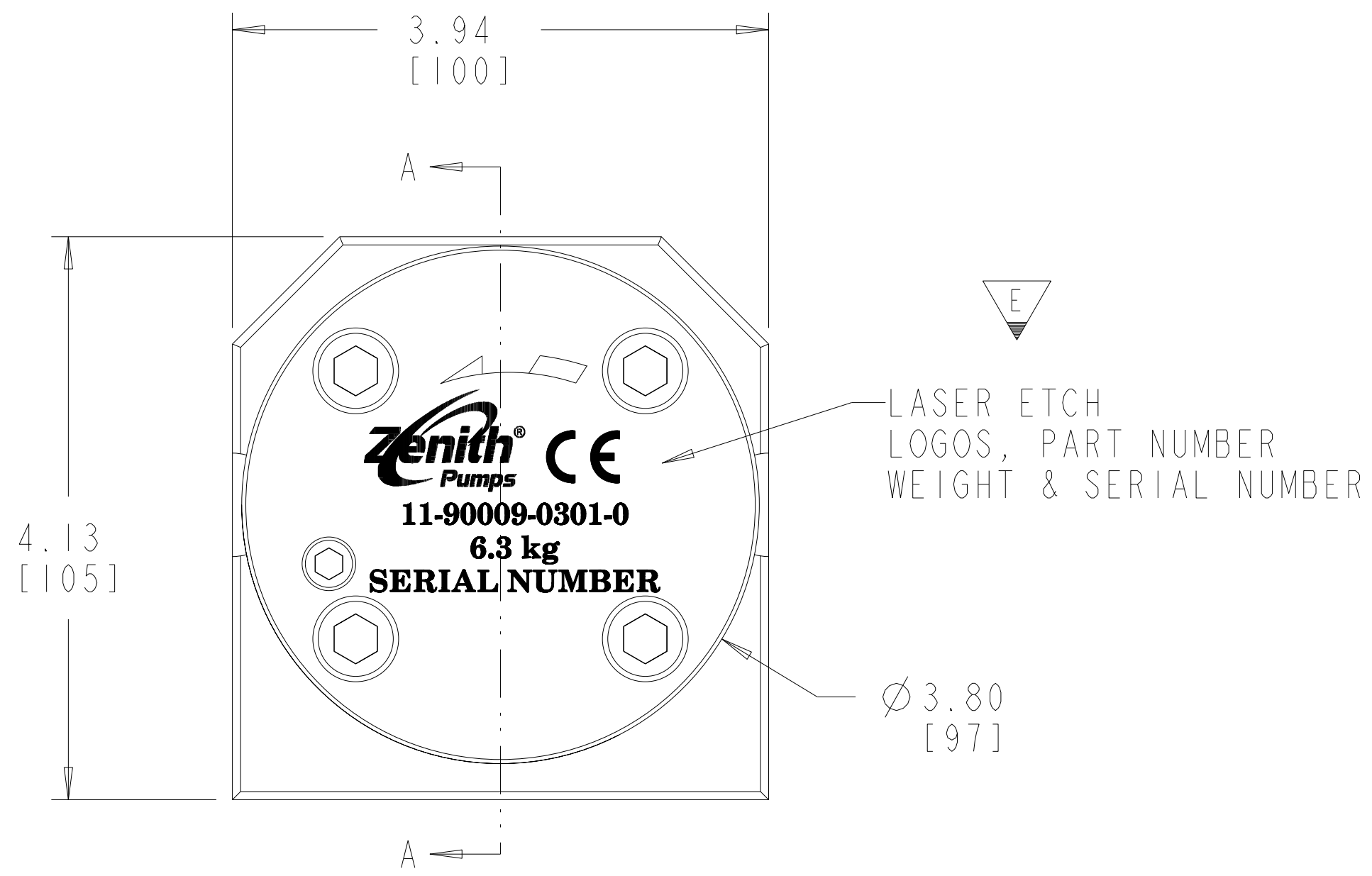
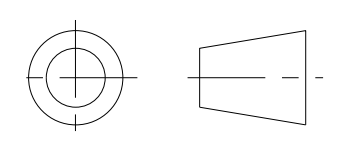


REVISIONS			
LTR	DESCRIPTION	DATE	ECN NO.
E	UPDATE LASER ETCHING	01/14/2011	004-2011

SECTION A-A



INTERPRET PER ASME-Y14.5M 1994



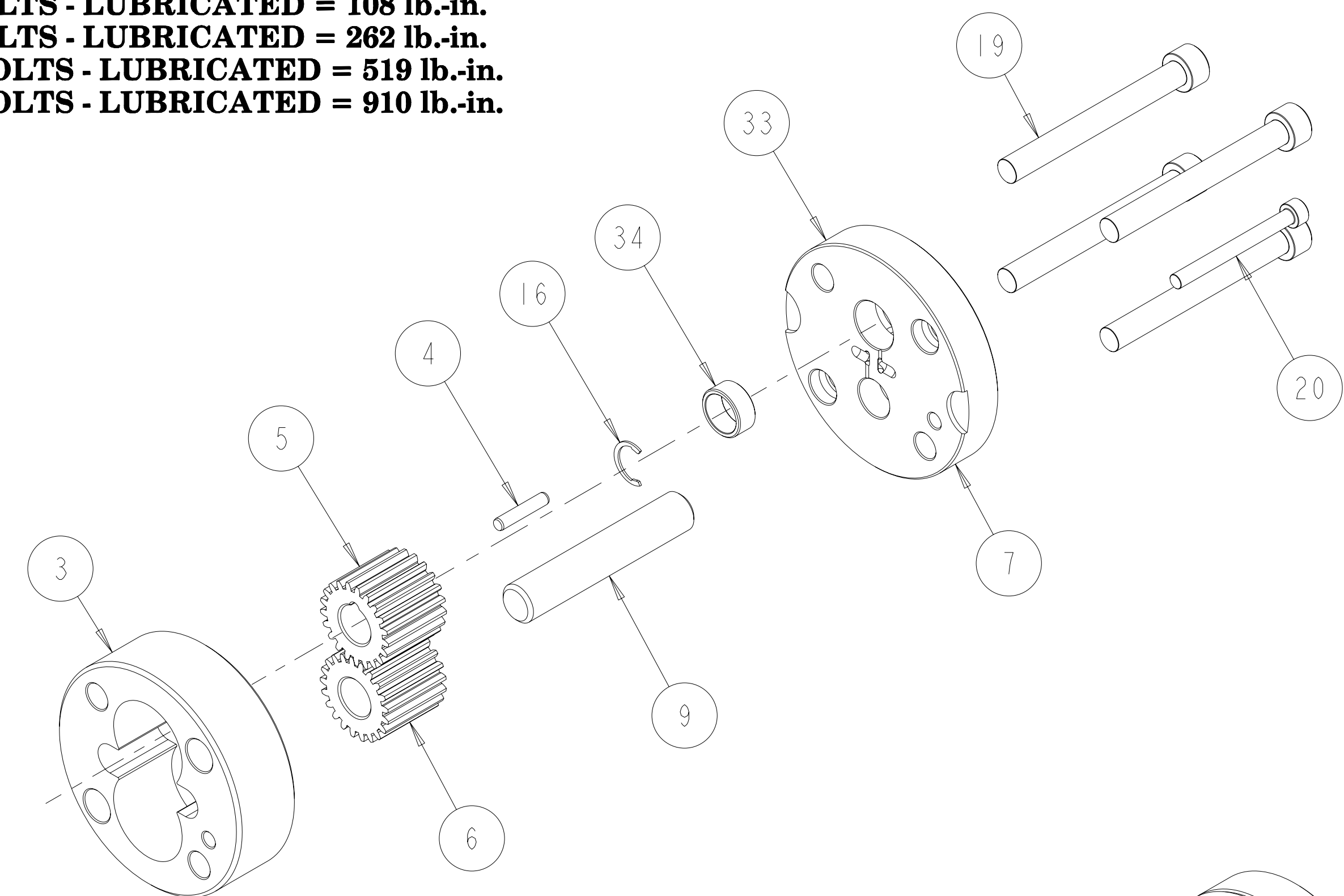
BOLT TORQUE
LUBRICATE UNDERSIDE OF CAP & THREADS ON FASTENERS
WITH ANTI-SEIZE COMPOUND PRIOR TO ASSEMBLY
***M6 ALLOY BOLTS - LUBRICATED = 108 lb.-in.**
***M8 ALLOY BOLTS - LUBRICATED = 262 lb.-in.**
***M10 ALLOY BOLTS - LUBRICATED = 519 lb.-in.**
***M12 ALLOY BOLTS - LUBRICATED = 910 lb.-in.**

THIS DOCUMENT CONTAINS INFORMATION THAT IS CONFIDENTIAL AND PROPRIETARY TO ZENITH PUMPS, COLFAX CORPORATION "COLFAX". THIS DOCUMENT IS FURNISHED ON THE UNDERSTANDING THAT THE DOCUMENT AND THE INFORMATION IT CONTAINS WILL NOT BE COPIED OR DISCLOSED TO OTHERS OR USED FOR ANY PURPOSE OTHER THAN CONDUCTING BUSINESS WITH COLFAX, AND WILL BE RETURNED AND ALL FURTHER USE DISCONTINUED UPON REQUEST BY COLFAX.	UNLESS OTHERWISE SPECIFIED DIMENSIONS ARE IN INCH TOLERANCES .XX ± 0.01 .XXX ± 0.005 ANG ± 0.5	DRAWN w1 01/15/98 CHECKED	ZENITH PUMPS 1710 AIRPORT ROAD MONROE, NC 28110		
	MATERIAL	PART WEIGHT = 0.000 LBS MODEL NUMBER = 119000903010 DRAWING = 119000903010		B-9000-9-301 9 CC/REV	
		PRO/ENGINEER DRAWING SIZE D	SCALE 1:1 SHEET 1 OF 2	DRAWING NUMBER 11-90009-0301-0	REV E

ITEM No.	PART NUMBER	PART NAME	MATERIAL	QTY
	119000903010	B-9000-9-301		1
2	157956800322	SHAFT, DRIVE	440C	1
3	156925100334	PLATE, GEAR	440C	1
4	185600800161	KEY, ROUND	AISI 303 SS	1
5	152523000012	GEAR, DRIVING	440C	1
6	152513000022	GEAR, DRIVEN	440C	1
7	146915100032	ASSEMBLY, REAR PLATE		1
33	156915100264	PLATE, REAR	440C	1
34	150451701971	BEARING, SLEEVE	440C	1
8	146945200032	ASSEMBLY, FRONT PLATE		1
31	156945200264	PLATE, FRONT	51420	1
32	150451702001	BEARING, SLEEVE	440C	1
9	150115600132	ARBOR	440C	1
10	151609100131	DOWEL, HOLLOW	AISI 17-4PH	2
19	187861010902	SHCS M10X1.5 X 90 MM ALLOY 12.9		4
17	185600800051	KEY, SQUARE	STEEL 50-1 K	1
16	181831800142	RING - RETAINING	PH 15-7 MO	1
20	187860610602	SHCS M6X1 X 60MM ALLOY 12.9		1
11	155401900413	HOUSING, LIPSEAL	440C	1
14	147900400062	SUB-ASSEMBLY, ASSY INSTRUCTION		1
41	150013100652	SEAL ASSEMBLY TOOL	ACETAL COPOLYMER	1
13	187900401381	TANDEM LIP SEAL	CARB. FIBER FILLED PTFE	1
18	187860610352	SHCS M6X1 X 35MM ALLOY 12.9		4
15	187650401891_INV	O-RING	PTFE ENCAPSULATED FLUOROCARBON	1
21	187300000071	PLUG, DRYSEAL TYPE	18-8	2

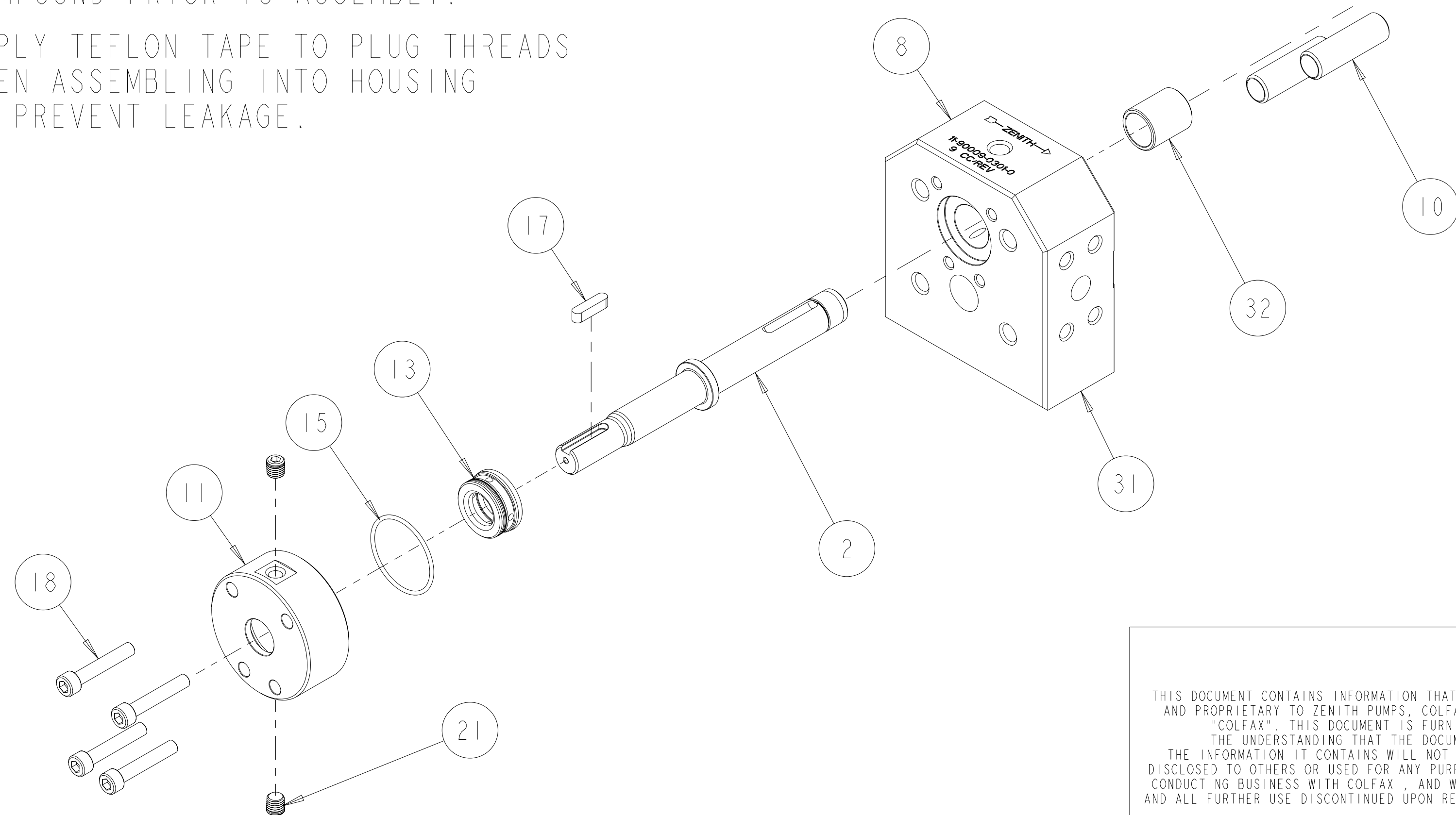
**BOLT TORQUE
LUBRICATE UNDERSIDE OF CAP & THREADS ON FASTENERS
WITH ANTI-SEIZE COMPOUND PRIOR TO ASSEMBLY**

- *M6 ALLOY BOLTS - LUBRICATED = 108 lb.-in.
- *M8 ALLOY BOLTS - LUBRICATED = 262 lb.-in.
- *M10 ALLOY BOLTS - LUBRICATED = 519 lb.-in.
- *M12 ALLOY BOLTS - LUBRICATED = 910 lb.-in.

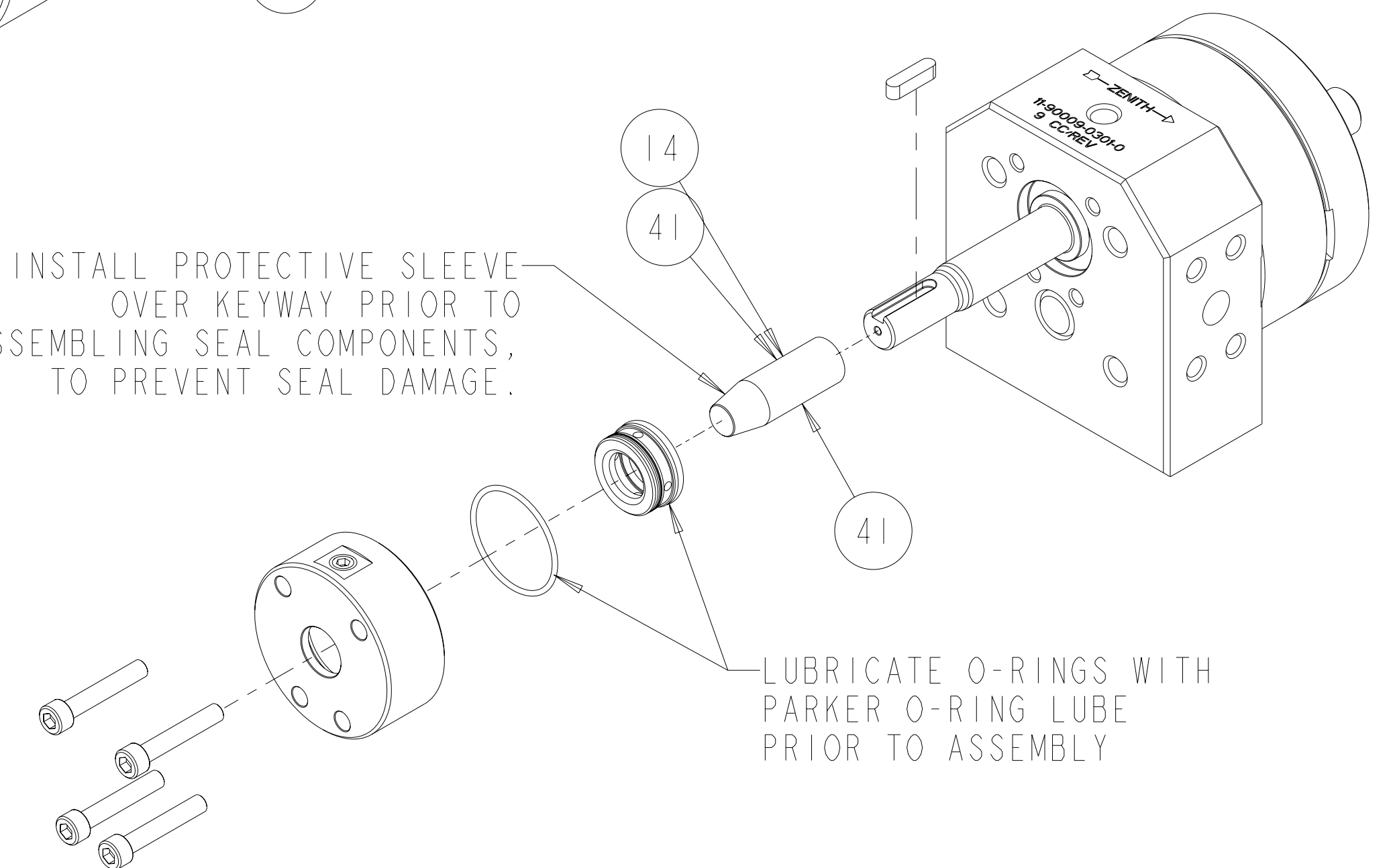


LUBRICATE UNDERSIDE OF CAP & THREADS ON FASTENERS WITH ANTI-SEIZE COMPOUND PRIOR TO ASSEMBLY.

APPLY TEFLON TAPE TO PLUG THREADS WHEN ASSEMBLING INTO HOUSING TO PREVENT LEAKAGE.

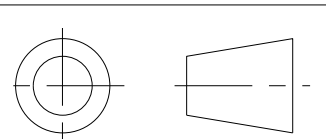


INSTALL PROTECTIVE SLEEVE OVER KEYWAY PRIOR TO ASSEMBLING SEAL COMPONENTS, TO PREVENT SEAL DAMAGE.



LUBRICATE O-RINGS WITH PARKER O-RING LUBE PRIOR TO ASSEMBLY

INTERPRET PER ASME-Y14.5M 1994



<p>THIS DOCUMENT CONTAINS INFORMATION THAT IS CONFIDENTIAL AND PROPRIETARY TO ZENITH PUMPS, COLFAX CORPORATION "COLFAX". THIS DOCUMENT IS FURNISHED ON THE UNDERSTANDING THAT THE DOCUMENT AND THE INFORMATION IT CONTAINS WILL NOT BE COPIED OR DISCLOSED TO OTHERS OR USED FOR ANY PURPOSE OTHER THAN CONDUCTING BUSINESS WITH COLFAX, AND WILL BE RETURNED AND ALL FURTHER USE DISCONTINUED UPON REQUEST BY COLFAX.</p>	UNLESS OTHERWISE SPECIFIED DIMENSIONS ARE IN INCH TOLERANCES		DRAWN WL 1/15/98 CHECKED MODEL NUMBER = 119000903010 DRAWING = 119000903010	<p>ZENITH PUMPS 1710 AIRPORT ROAD MONROE, NC 28110</p>	SCALE 5:8 SHEET 2 OF 2	DRAWING NUMBER 11-90009-0301-0	REV E	
	.XX ± 0.01 .XXX ± 0.005 ANG ± 0.5	PRO/ENGINEER DRAWING	SIZE D					
				PRO/ENGINEER DRAWING	SIZE D			