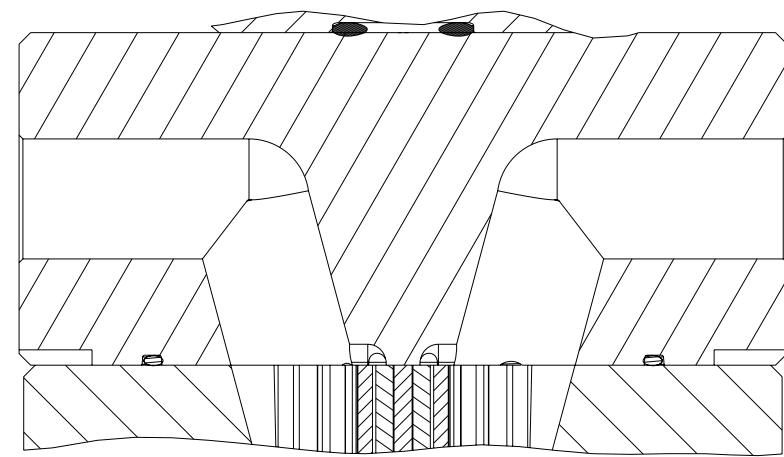
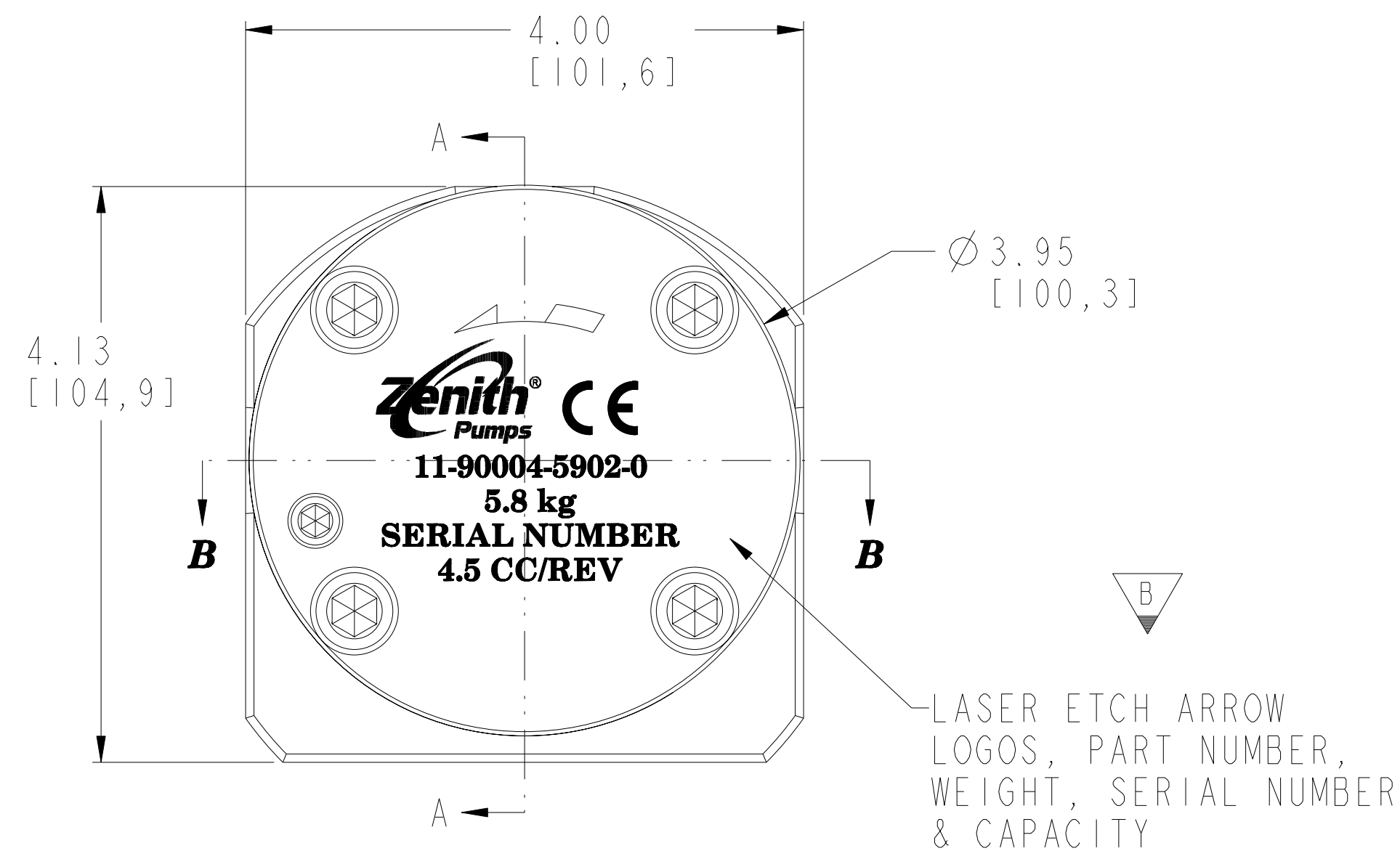


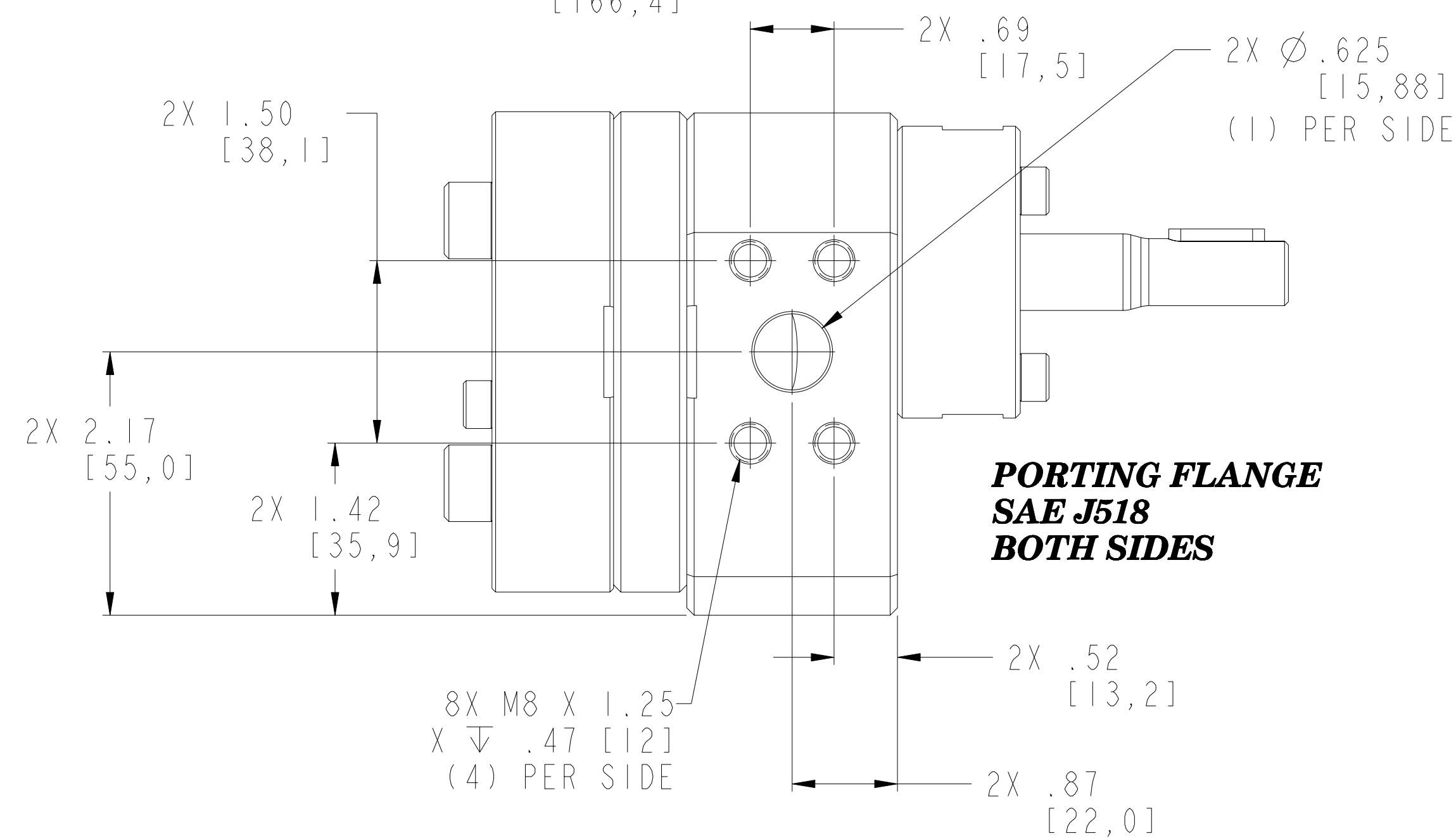
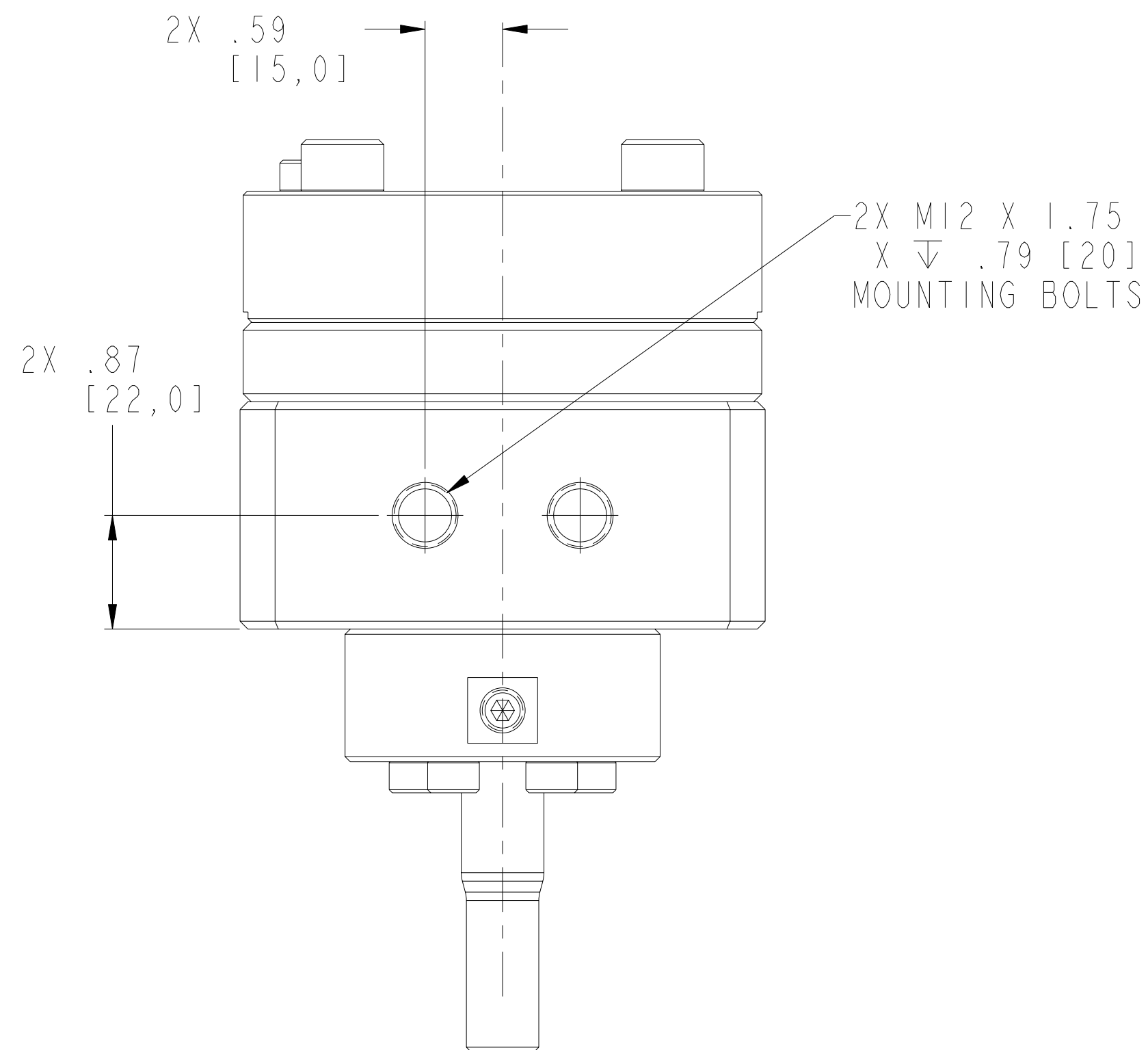
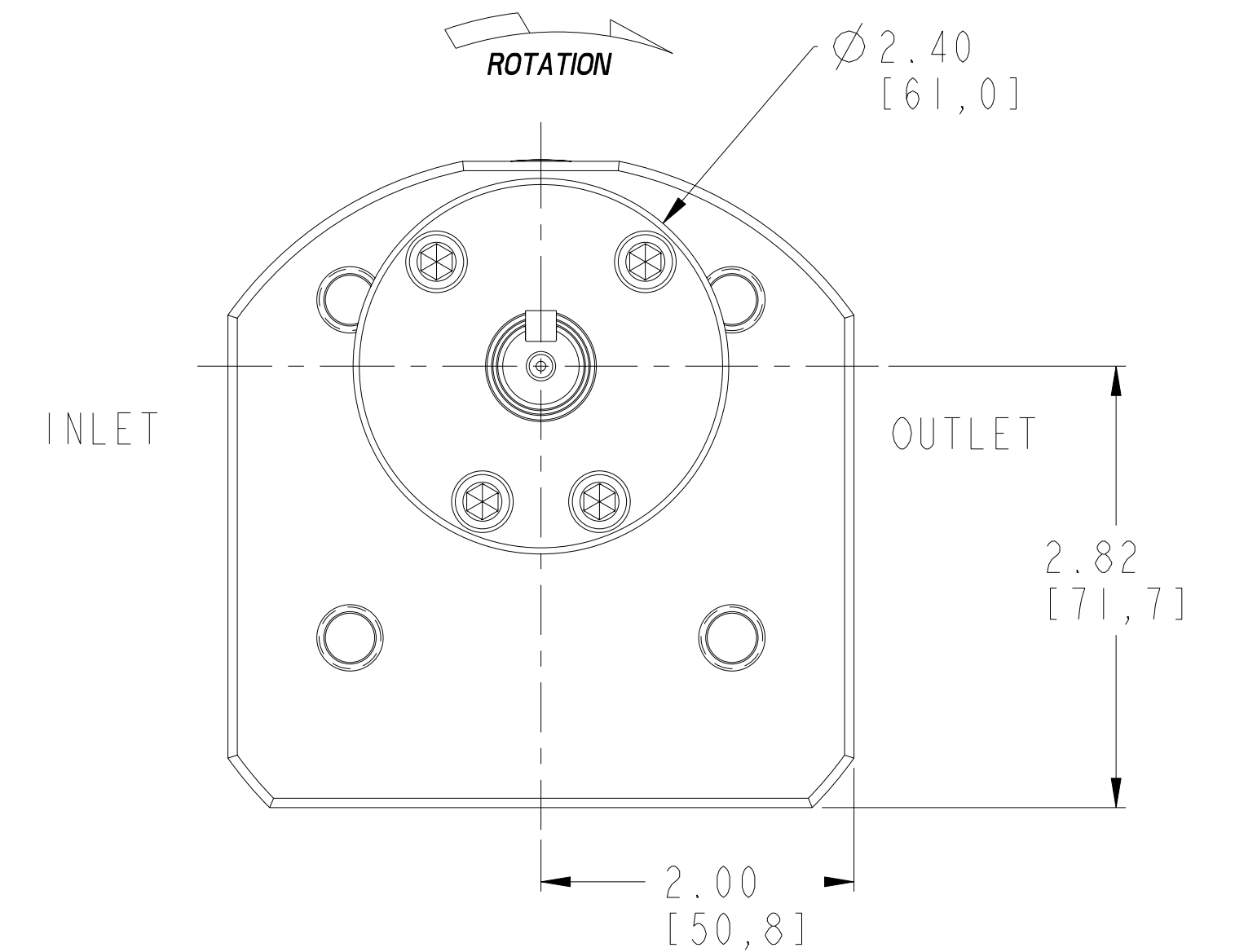
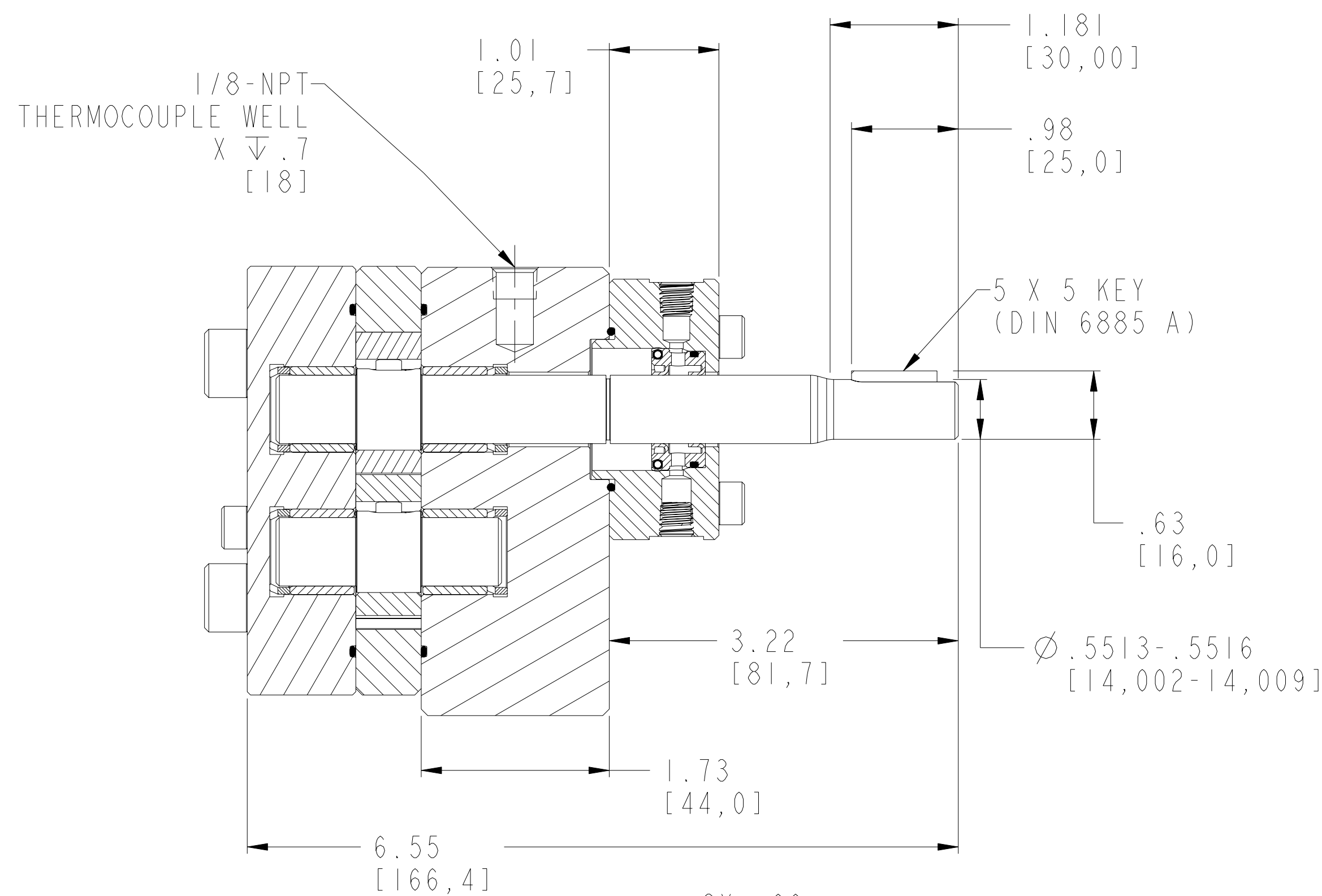
REVISIONS			
LTR	DESCRIPTION	DATE	ECN NO.
B	UPDATE LASER ETCHING	01/17/2011	004-2011



**SECTION B-B**



**SECTION A-A**



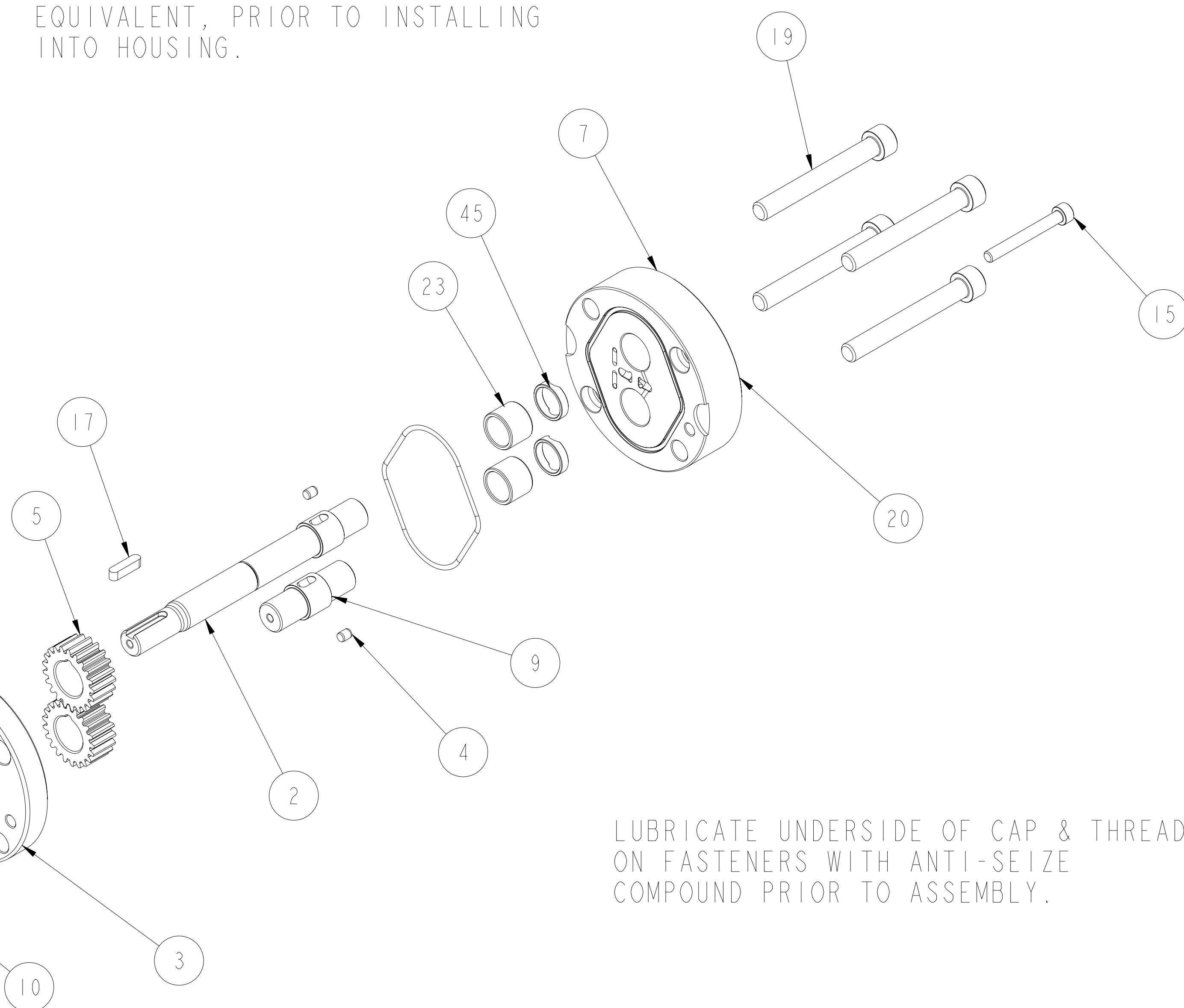
INTERPRET PER ASME-Y14.5M 1994

**BOLT TORQUE**  
**LUBRICATE UNDERSIDE OF CAP & THREADS ON FASTENERS WITH ANTI-SEIZE COMPOUND PRIOR TO ASSEMBLY**  
 \*M6 ALLOY BOLTS - LUBRICATED = 108 lb.-in.  
 \*M8 ALLOY BOLTS - LUBRICATED = 262 lb.-in.  
 \*M10 ALLOY BOLTS - LUBRICATED = 519 lb.-in.  
 \*M12 ALLOY BOLTS - LUBRICATED = 910 lb.-in.

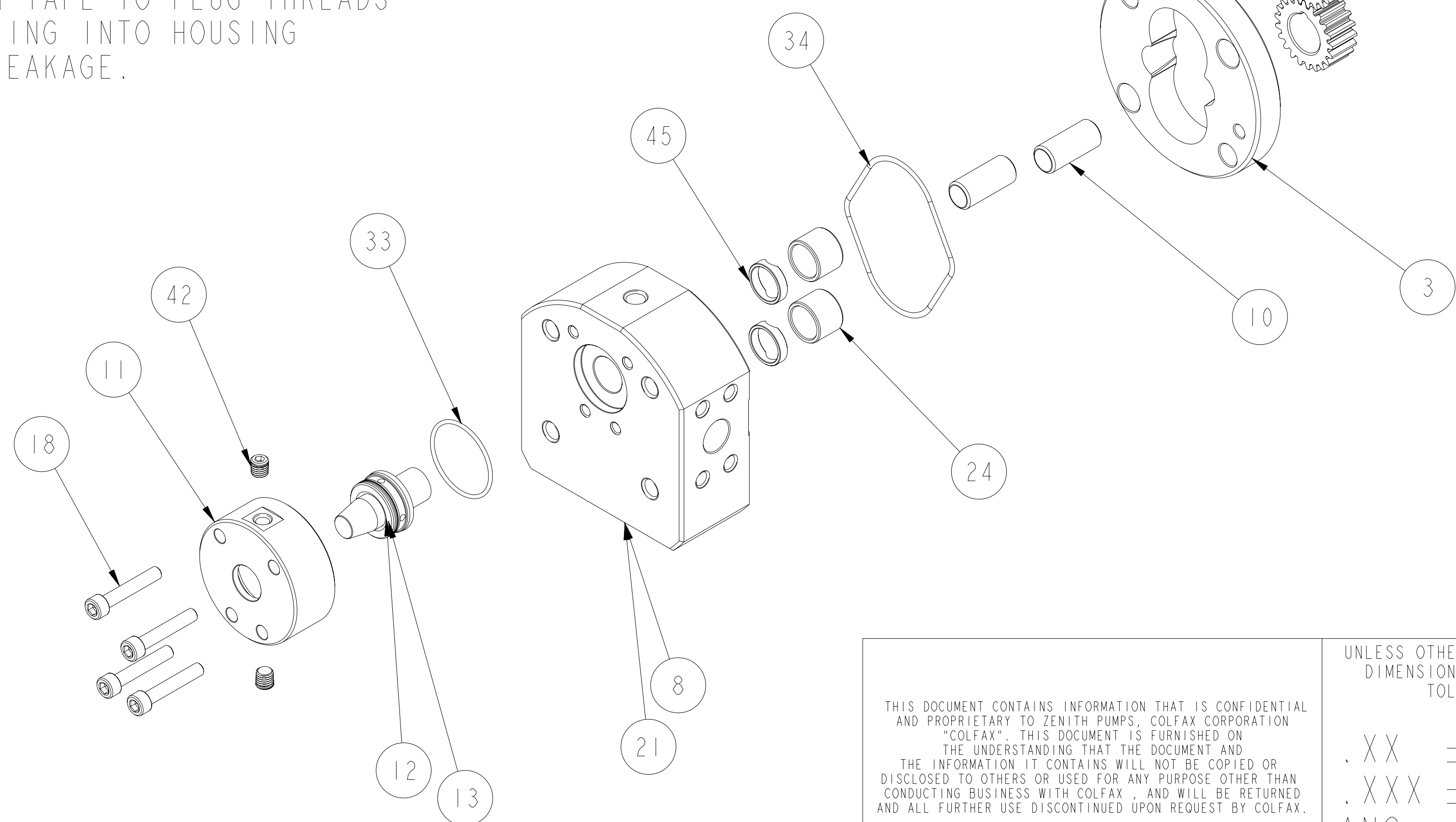
THIS DOCUMENT CONTAINS INFORMATION THAT IS CONFIDENTIAL AND PROPRIETARY TO ZENITH PUMPS, COLFAX CORPORATION "COLFAX". THIS DOCUMENT IS FURNISHED ON THE UNDERSTANDING THAT THE DOCUMENT AND THE INFORMATION IT CONTAINS WILL NOT BE COPIED OR DISCLOSED TO OTHERS OR USED FOR ANY PURPOSE OTHER THAN CONDUCTING BUSINESS WITH COLFAX, AND WILL BE RETURNED AND ALL FURTHER USE DISCONTINUED UPON REQUEST BY COLFAX.	UNLESS OTHERWISE SPECIFIED DIMENSIONS ARE IN INCH TOLERANCES	DRAWN MBR	03/15/04	<b>ZENITH PUMPS</b> 5910 ELWIN BUCHANAN DRIVE SANFORD, NC 27330
	.XX ± 0.01 .XXX ± 0.005 ANG ± 0.5	CHECKED		
MATERIAL	SEE BILL OF MATERIAL	PART WEIGHT =	48.339 LBS	C-9000 4.5 CC/REV RAN 902 SINGLE STREAM PUMP
		MODEL NUMBER =	119000459020	
			DRAWING =	119000459020
		PRO/ENGINEER DRAWING	SIZE D	DRAWING NUMBER
				11-90004-5902-0
				REV
				B

ITEM No.	PART NUMBER	PART NAME	MATERIAL	QTY
	119000459020	C-9000 4.5 CC/REV RAN 902		1
8	146945200174	ASSEMBLY, FRONT PLATE		1
21	156945200384	PLATE, FRONT	ZP1222	1
45	150752000061	BUSHING, SPACER	316 S.S.	2
24	150453100091	BEARING, SLEEVE	ZP1186	2
5	152521900242	GEAR, DRIVING	ZP2724	2
2	157956800732	SHAFT, DRIVE	ZP2724	1
4	185600800361	KEY, ROUND	303 SS	2
9	150115600392	ARBOR	ZP2724	1
10	151609100591	DOWEL, HOLLOW	17-4PH	2
3	156925100564	PLATE, GEAR	ZP1222	1
7	146915100162	ASSEMBLY, REAR PLATE		1
20	156915100374	PLATE, REAR	ZP1222	1
45	150752000061	BUSHING, SPACER	316 S.S.	2
23	150453100091	BEARING, SLEEVE	ZP1186	2
34	187650402761	O-RING	PTFE ENCAPSULATED FLUOROCARBON	2
11	155401901031	HOUSING, LIP SEAL	316 S.S.	1
33	187650401891_INV	O-RING	PTFE ENCAPSULATED FLUOROCARBON	1
17	185600800051	KEY, SQUARE	STEEL 50-1 K	1
19	189341010802	SHCS M10X1.5 X 80 MM 316 SS		4
15	189340610502	SHCS M6X1 X 50MM 316 SS		1
18	189340610352	SHCS M6X1 X 35MM 316 SS		4
42	187300000161	PLUG, DRYSEAL TYPE	316 S.S.	2
12	147900400022	SUB-ASSEMBLY, ASSY INSTRUCTION		1
41	150013100652	SEAL ASSEMBLY TOOL	ACETAL COPOLYMER	1
13	187900401341	TANDEM LIP SEAL	CARB. FIBER FILLED PTFE	1

LUBRICATE ALL O-RINGS ON LIP SEAL WITH PARKER O-RING LUBE OR EQUIVALENT, PRIOR TO INSTALLING INTO HOUSING.

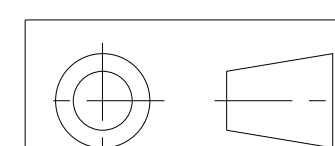


APPLY TEFLON TAPE TO PLUG THREADS WHEN ASSEMBLING INTO HOUSING TO PREVENT LEAKAGE.



LUBRICATE UNDERSIDE OF CAP & THREADS ON FASTENERS WITH ANTI-SEIZE COMPOUND PRIOR TO ASSEMBLY.

INTERPRET PER ASME-Y14.5M 1994



THIS DOCUMENT CONTAINS INFORMATION THAT IS CONFIDENTIAL AND PROPRIETARY TO ZENITH PUMPS, COLFAX CORPORATION "COLFAX". THIS DOCUMENT IS FURNISHED ON THE UNDERSTANDING THAT THE DOCUMENT AND THE INFORMATION IT CONTAINS WILL NOT BE COPIED OR DISCLOSED TO OTHERS OR USED FOR ANY PURPOSE OTHER THAN CONDUCTING BUSINESS WITH COLFAX, AND WILL BE RETURNED AND ALL FURTHER USE DISCONTINUED UPON REQUEST BY COLFAX.

UNLESS OTHERWISE SPECIFIED DIMENSIONS ARE IN INCH TOLERANCES

.XX ± 0.01  
 .XXX ± 0.005  
 ANG ± 0.5

DRAWN	MBR	03/15/04
CHECKED		
MODEL NUMBER = 119000459020		
DRAWING = 119000459020		
PRO/ENGINEER	SIZE D	
DRAWING		

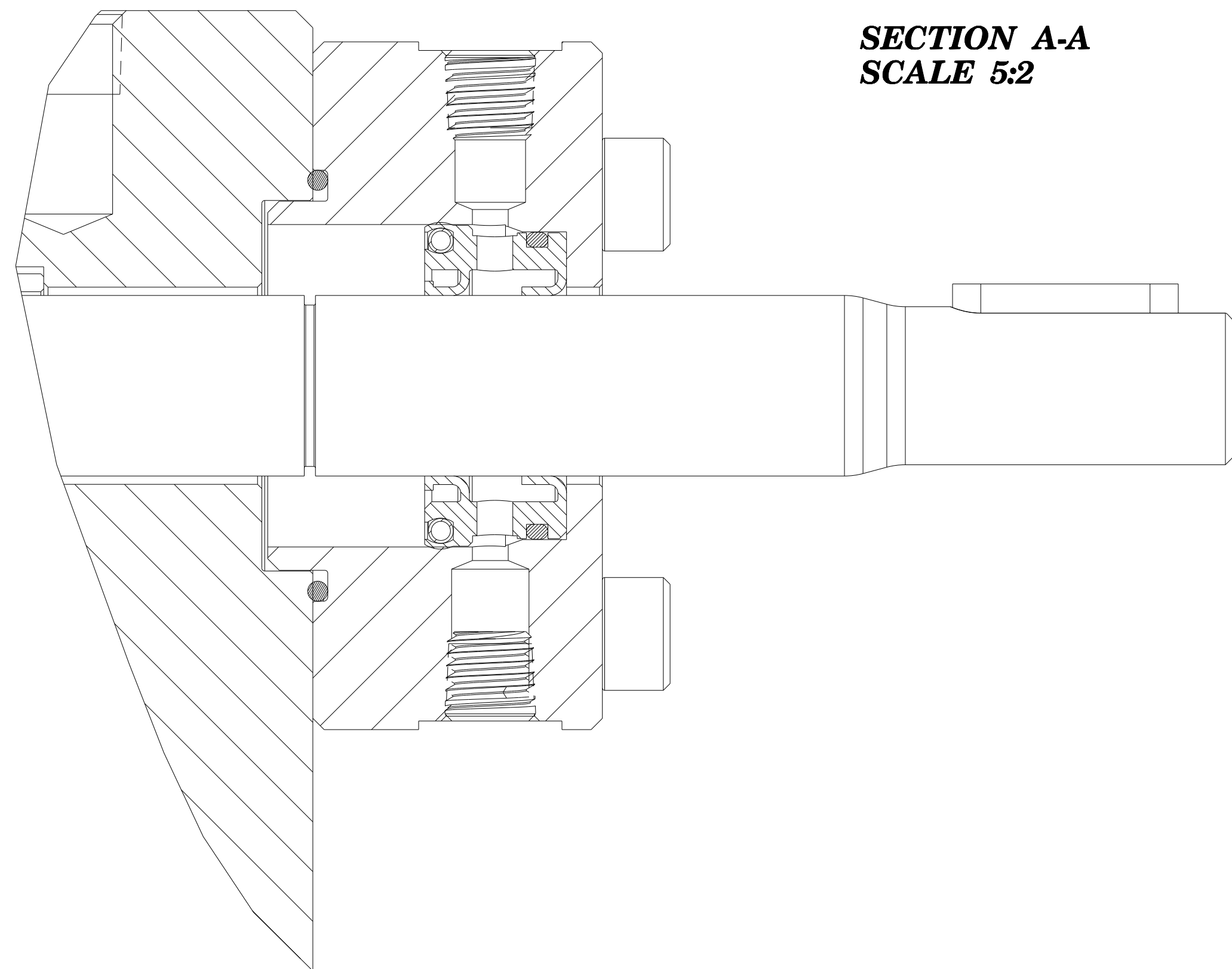


**ZENITH PUMPS**  
 5910 ELWIN BUCHANAN DRIVE  
 SANFORD, NC 27330

SCALE 5:8  
 SHEET 2 OF 3

DRAWING NUMBER  
 11-90004-5902-0

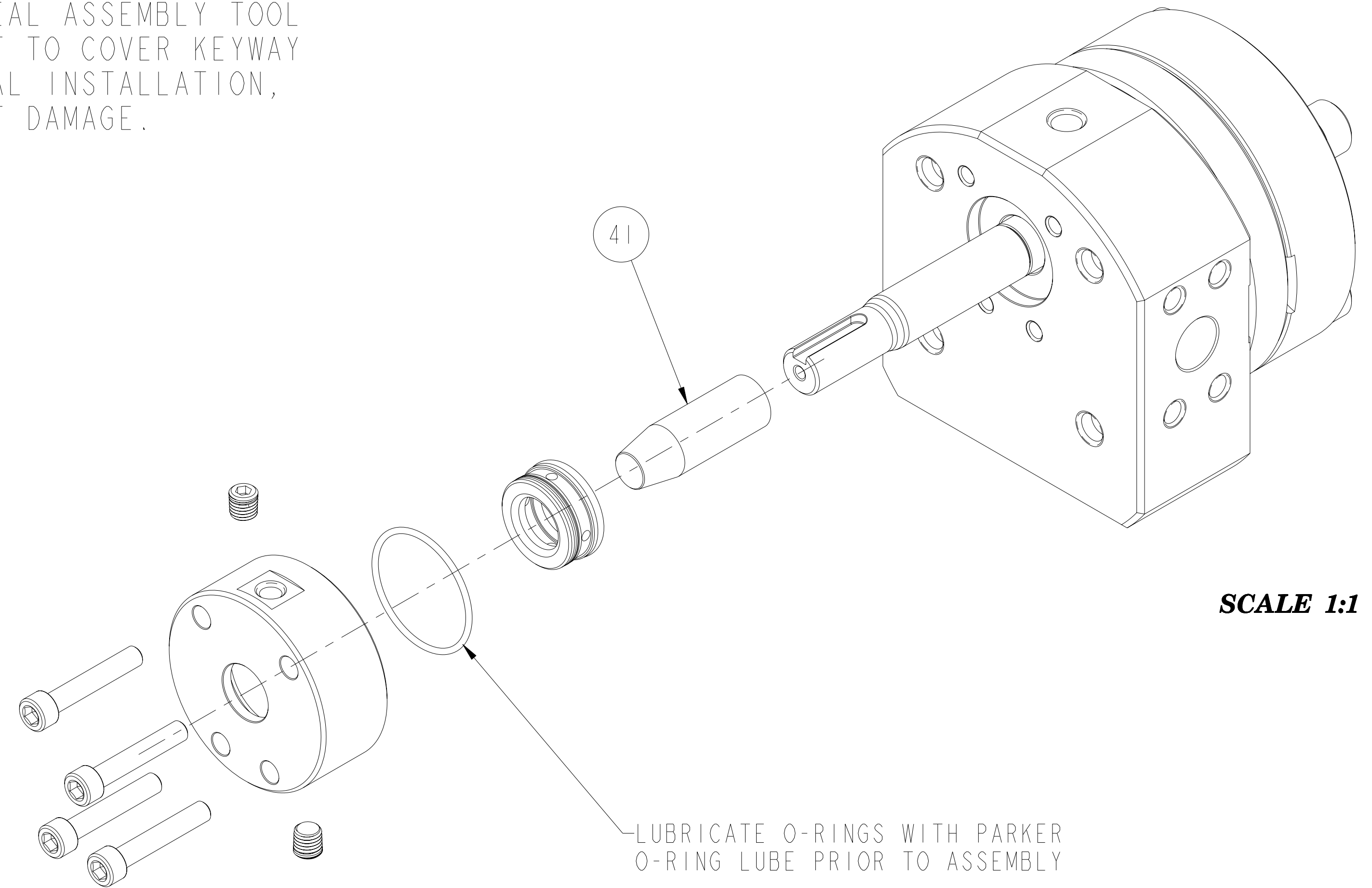
REV  
 B



**SECTION A-A**  
**SCALE 5:2**

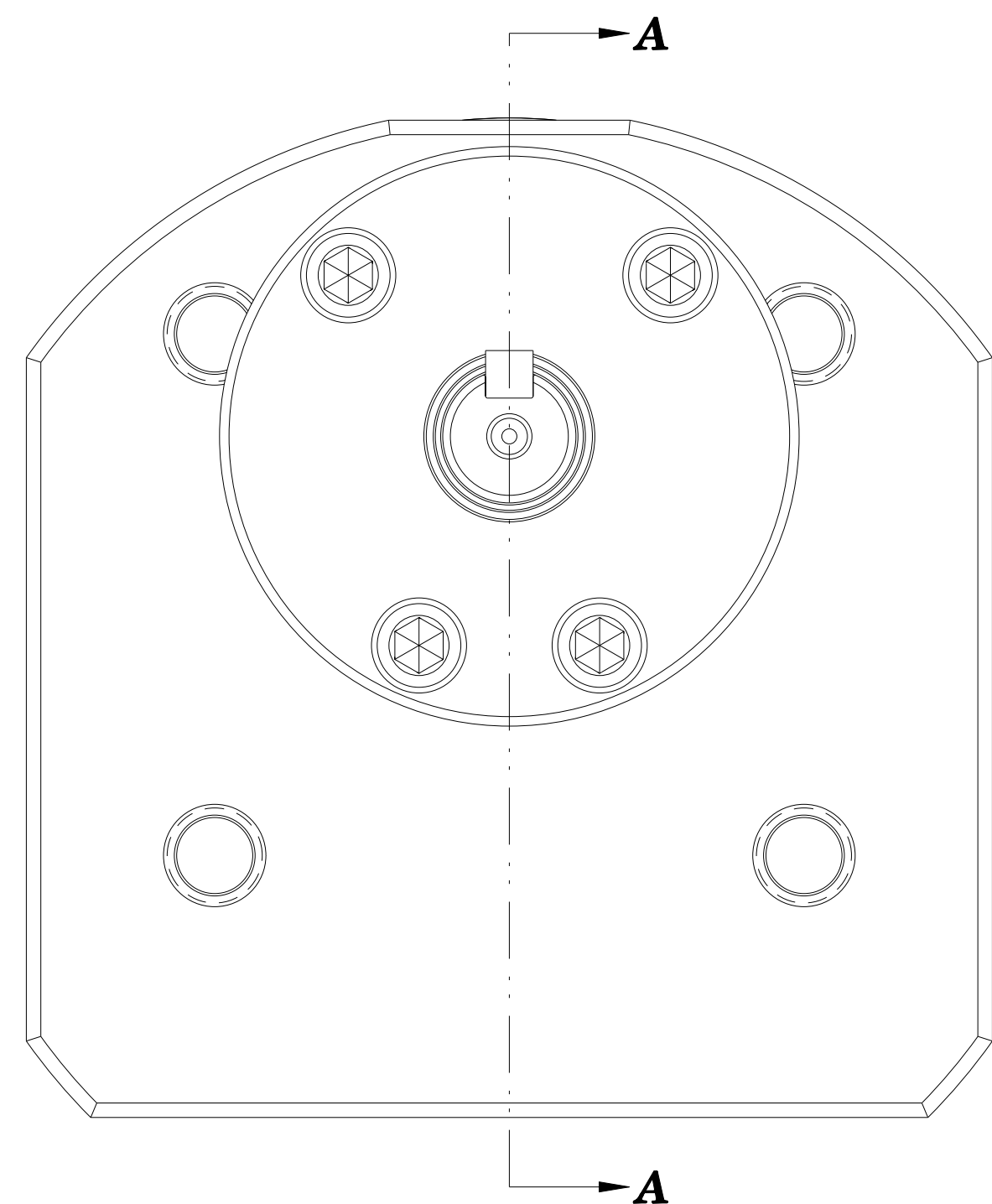
LUBRICATE UNDERSIDE OF CAP & THREADS  
ON FASTENERS WITH ANTI-SEIZE  
COMPOUND PRIOR TO ASSEMBLY.

INSTALL SEAL ASSEMBLY TOOL  
ONTO SHAFT TO COVER KEYWAY  
DURING SEAL INSTALLATION,  
TO PREVENT DAMAGE.

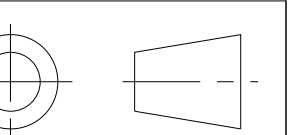


**SCALE 1:1**

LUBRICATE O-RINGS WITH PARKER  
O-RING LUBE PRIOR TO ASSEMBLY



INTERPRET PER ASME-Y14.5M 1994



<p>THIS DOCUMENT CONTAINS INFORMATION THAT IS CONFIDENTIAL AND PROPRIETARY TO ZENITH PUMPS, COLFAX CORPORATION "COLFAX". THIS DOCUMENT IS FURNISHED ON THE UNDERSTANDING THAT THE DOCUMENT AND THE INFORMATION IT CONTAINS WILL NOT BE COPIED OR DISCLOSED TO OTHERS OR USED FOR ANY PURPOSE OTHER THAN CONDUCTING BUSINESS WITH COLFAX, AND WILL BE RETURNED AND ALL FURTHER USE DISCONTINUED UPON REQUEST BY COLFAX.</p>	UNLESS OTHERWISE SPECIFIED DIMENSIONS ARE IN INCH TOLERANCES		DRAWN MBR 03/15/04 CHECKED MODEL NUMBER = 119000459020 DRAWING = 119000459020		<b>ZENITH PUMPS</b> 5910 ELWIN BUCHANAN DRIVE SANFORD, NC 27330	
	. XX ± 0.01 . XXX ± 0.005 ANG ± 0.5	PRO/ENGINEER DRAWING	SIZE D		SCALE 3:2 SHEET 3 OF 3	DRAWING NUMBER 11-90004-5902-0