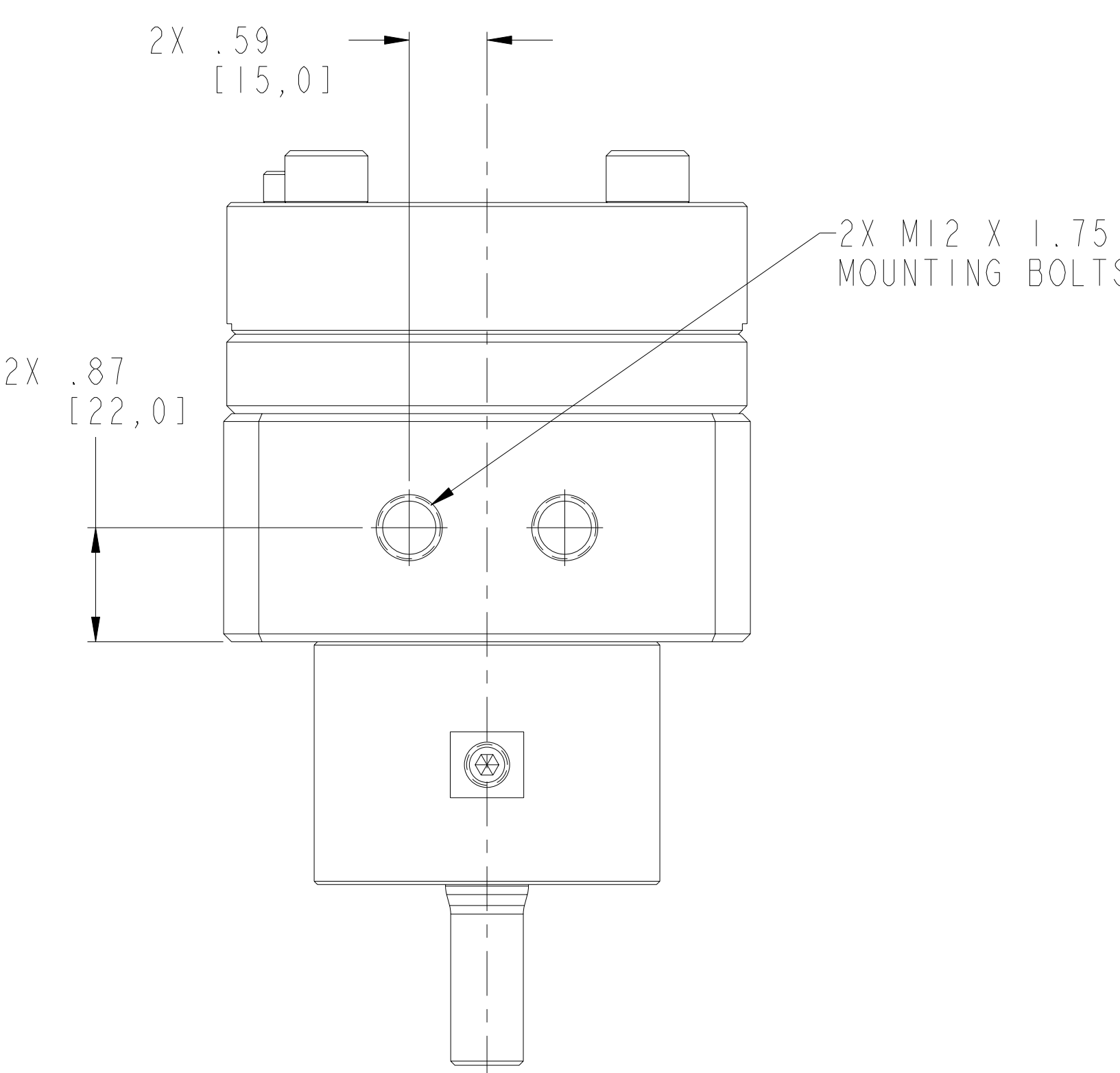
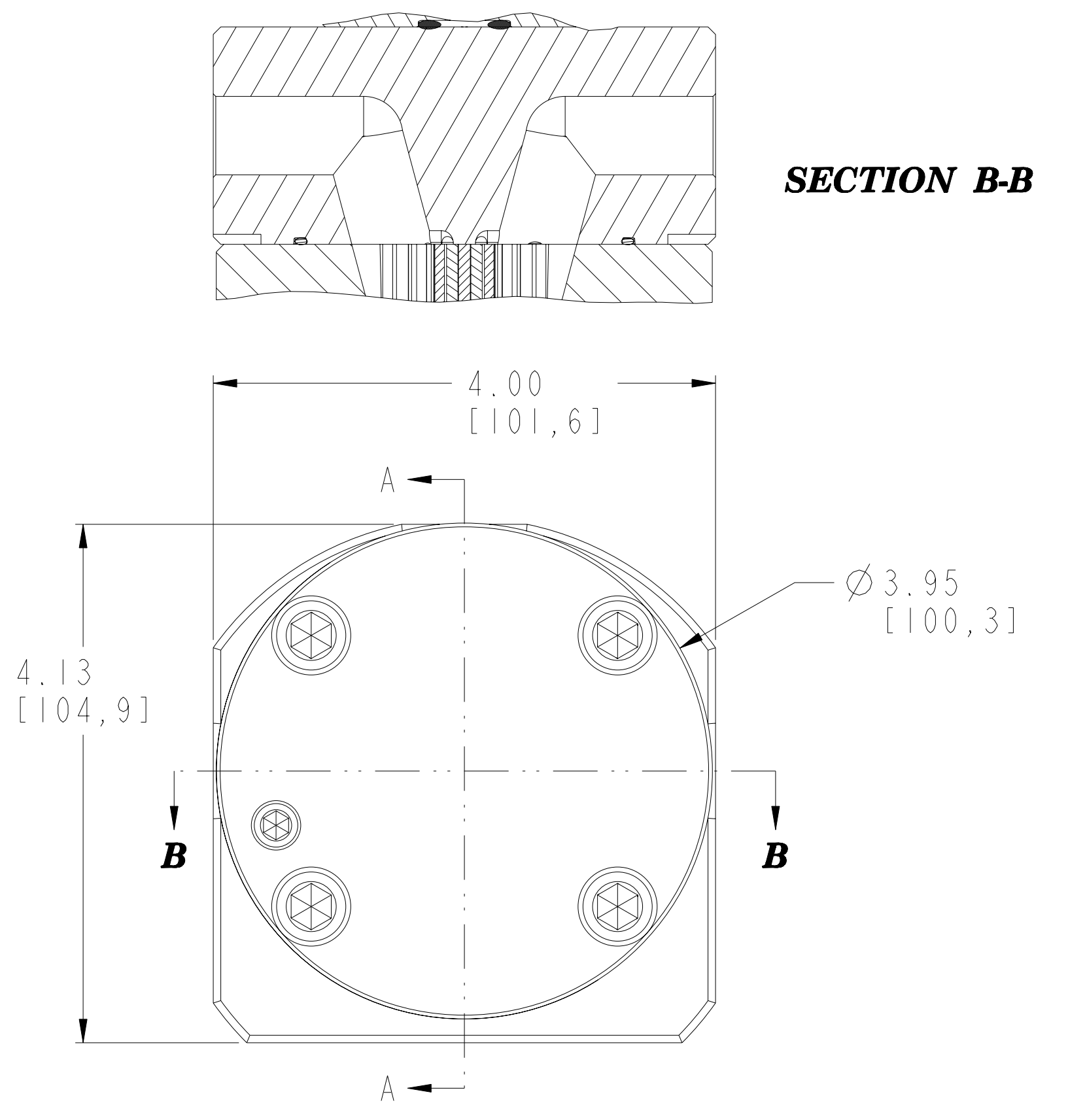
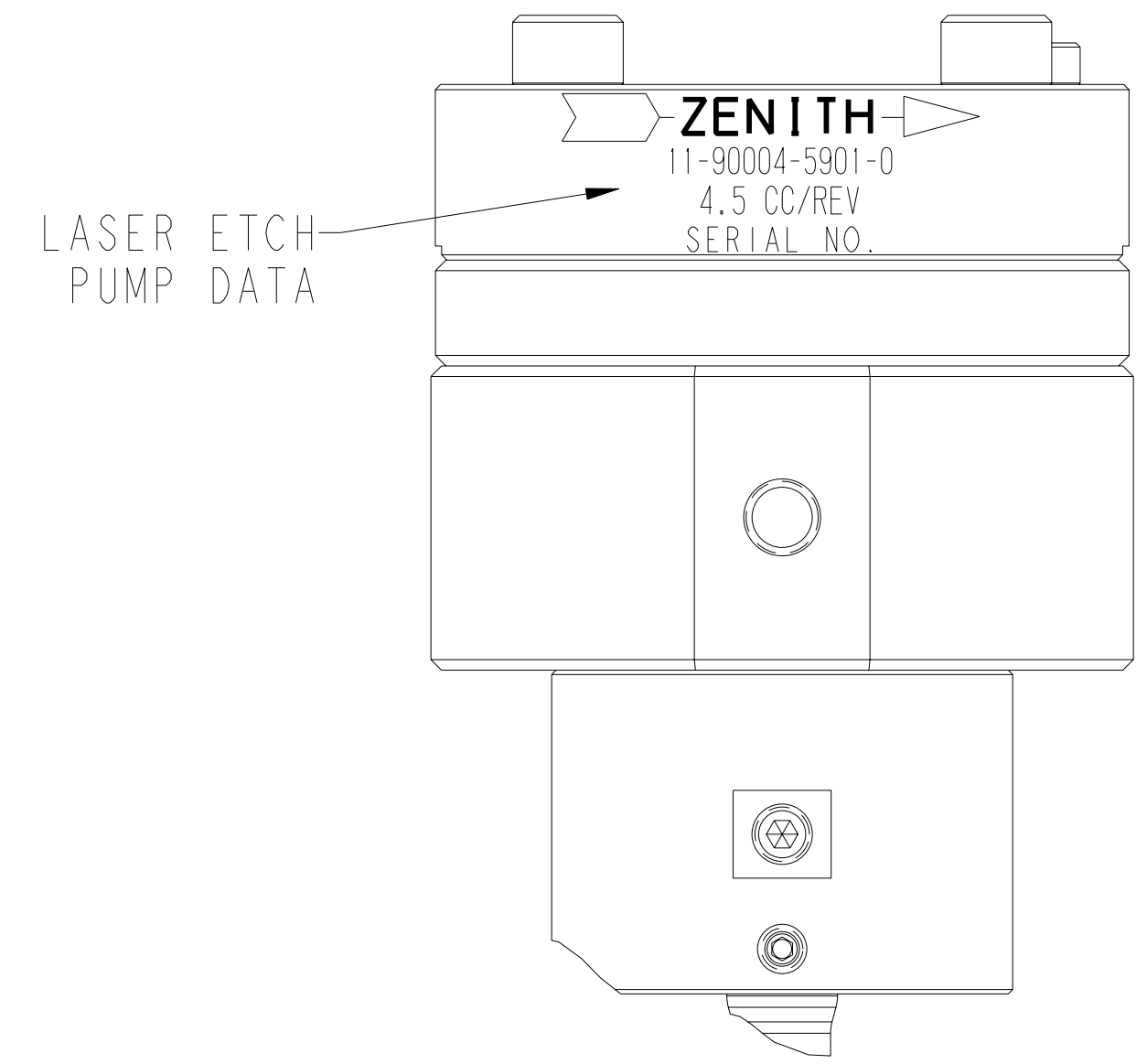
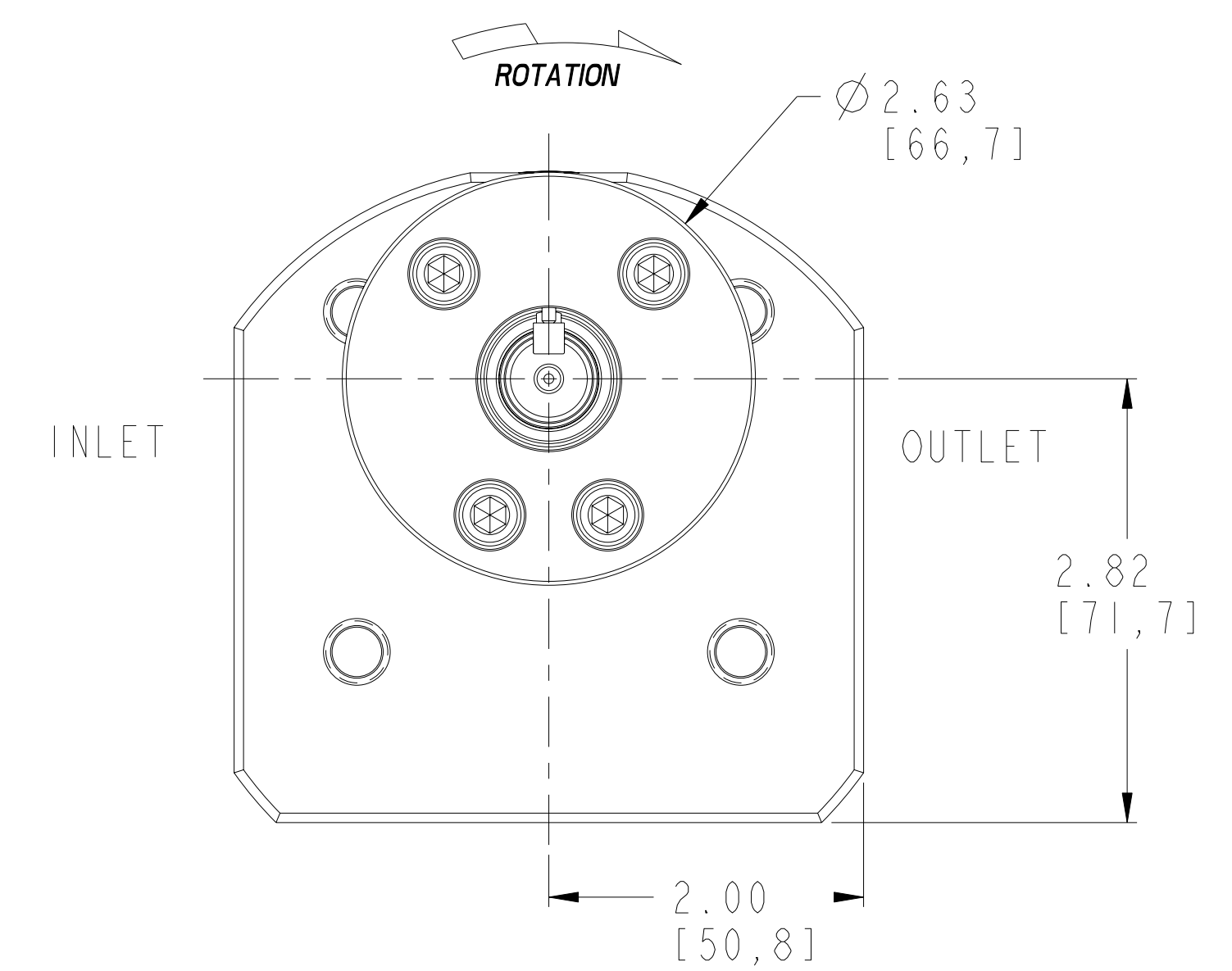
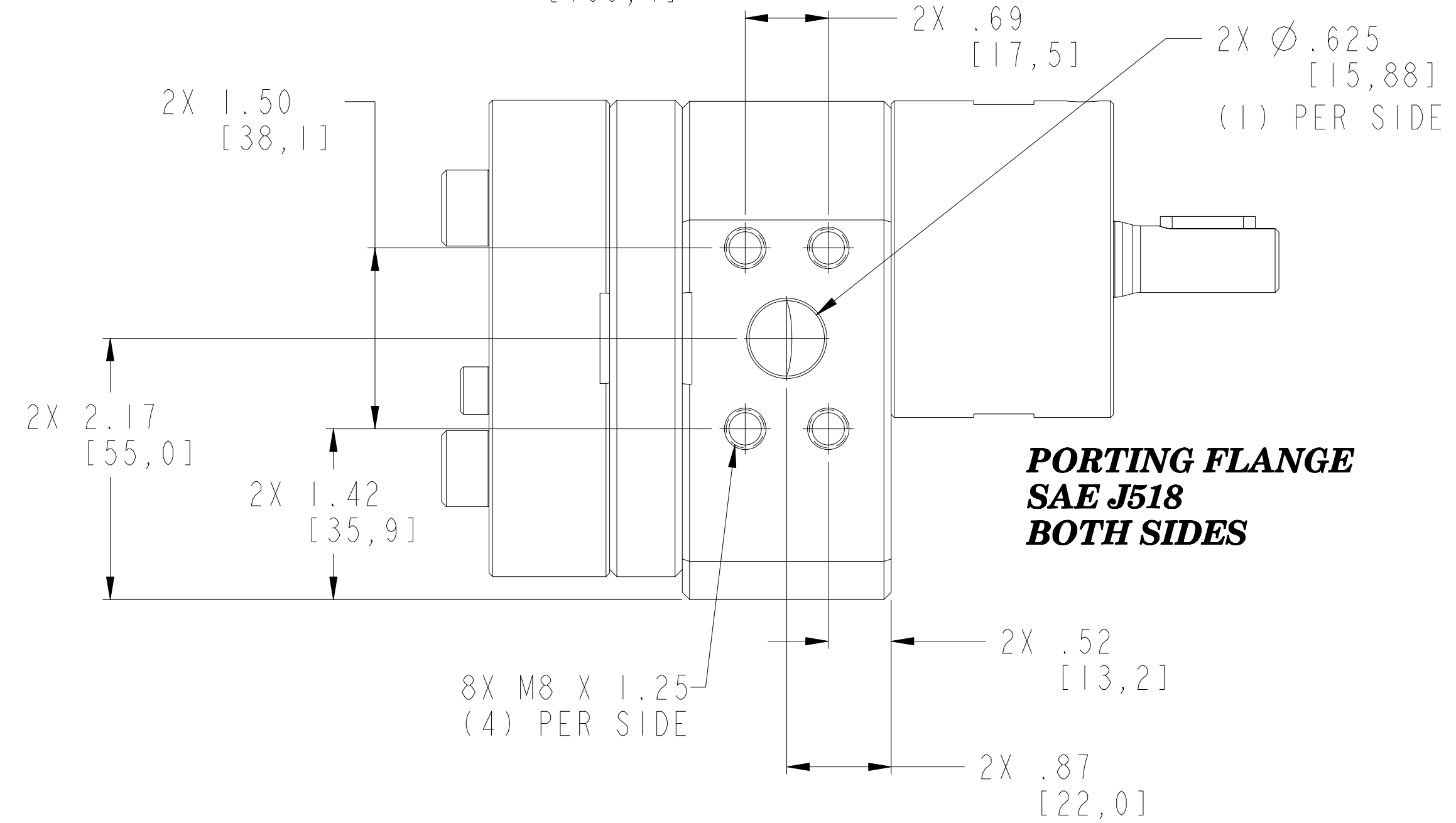
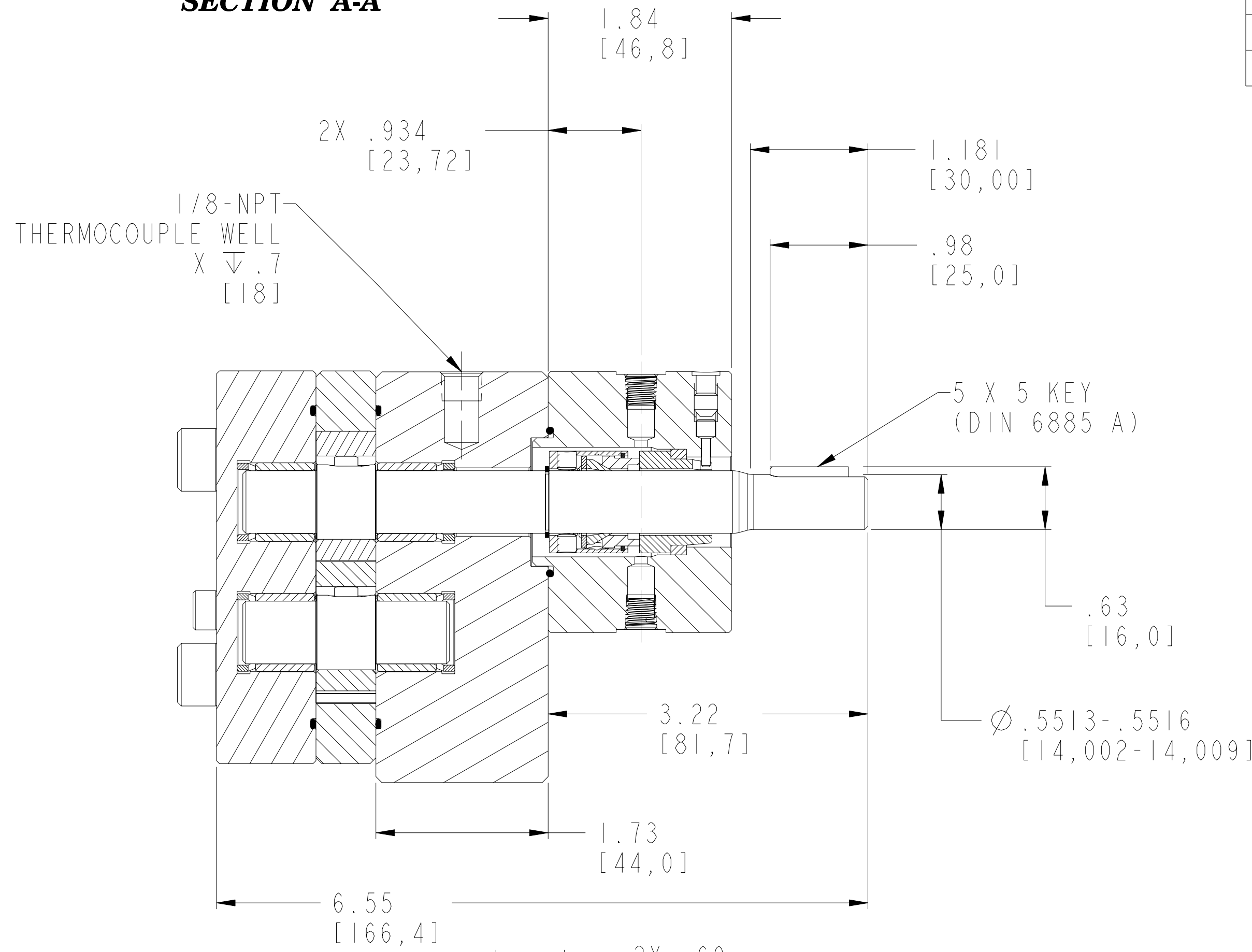


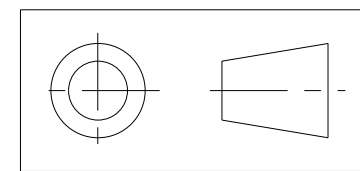
REVISIONS			
LTR	DESCRIPTION	DATE	ECN NO.
A	PLUG WAS 18-73000-0007-1	07/26/07	128-2007



**SECTION A-A**



INTERPRET PER ASME-Y14.5M 1994



**TORQUE CHART**  
**M6 BOLTS LUBRICATED = 70 lb.-in. (7.9 N-m)**  
**M10 BOLTS LUBRICATED = 335 lb.-in. (37.8 N-m)**  
**M8 BOLTS (FLANGE) LUBRICATED = 169 lb.-in. (19.1 N-m)**  
**M12 BOLTS (MOUNTING) LUBRICATED = 580 lb.-in. (66.0 N-m)**

THIS DOCUMENT CONTAINS INFORMATION THAT IS CONFIDENTIAL AND PROPRIETARY TO ZENITH PUMPS, COLFAX CORPORATION "COLFAX". THIS DOCUMENT IS FURNISHED ON THE UNDERSTANDING THAT THE DOCUMENT AND THE INFORMATION IT CONTAINS WILL NOT BE COPIED OR DISCLOSED TO OTHERS OR USED FOR ANY PURPOSE OTHER THAN CONDUCTING BUSINESS WITH COLFAX, AND WILL BE RETURNED AND ALL FURTHER USE DISCONTINUED UPON REQUEST BY COLFAX.

UNLESS OTHERWISE SPECIFIED DIMENSIONS ARE IN INCH TOLERANCES  
 .XX ± 0.01  
 .XXX ± 0.005  
 ANG ± 0.5

MATERIAL  
 SEE BILL OF MATERIAL

DRAWN MBR 03/15/04  
 CHECKED  
 PART WEIGHT = 48.339 LBS  
 SURFACE AREA = 371.839 IN<sup>2</sup>  
 MODEL NUMBER = 119000459010  
 DRAWING = 119000459010  
 PRO/ENGINEER DRAWING  
 SIZE D

**ZENITH PUMPS**  
 5910 ELWIN BUCHANAN DRIVE  
 SANFORD, NC 27330

C-9000 4.5 CC/REV RAN 901  
 SINGLE STREAM PUMP

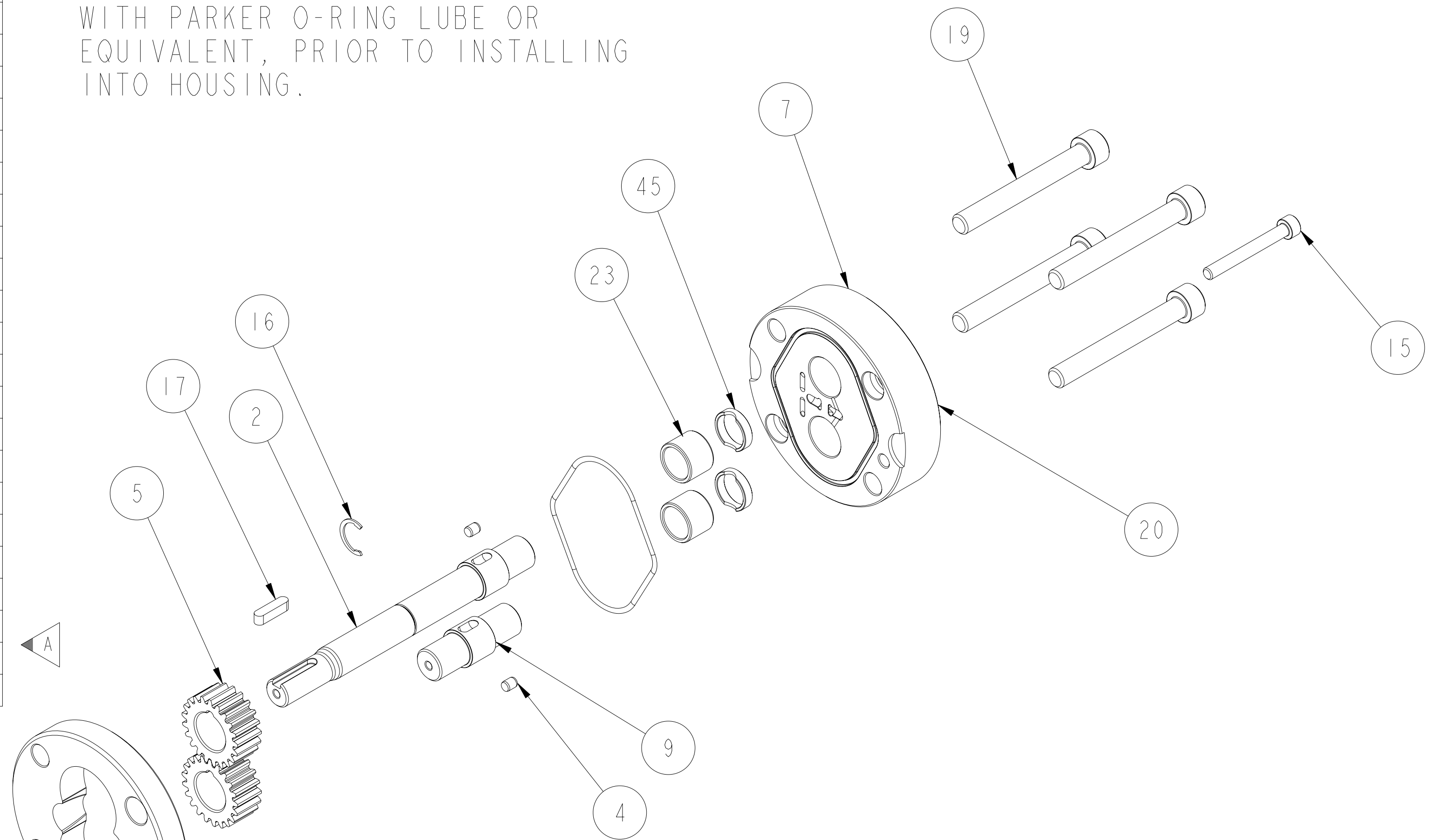
SCALE 1:1  
 SHEET 1 OF 3

DRAWING NUMBER  
 11-90004-5901-0

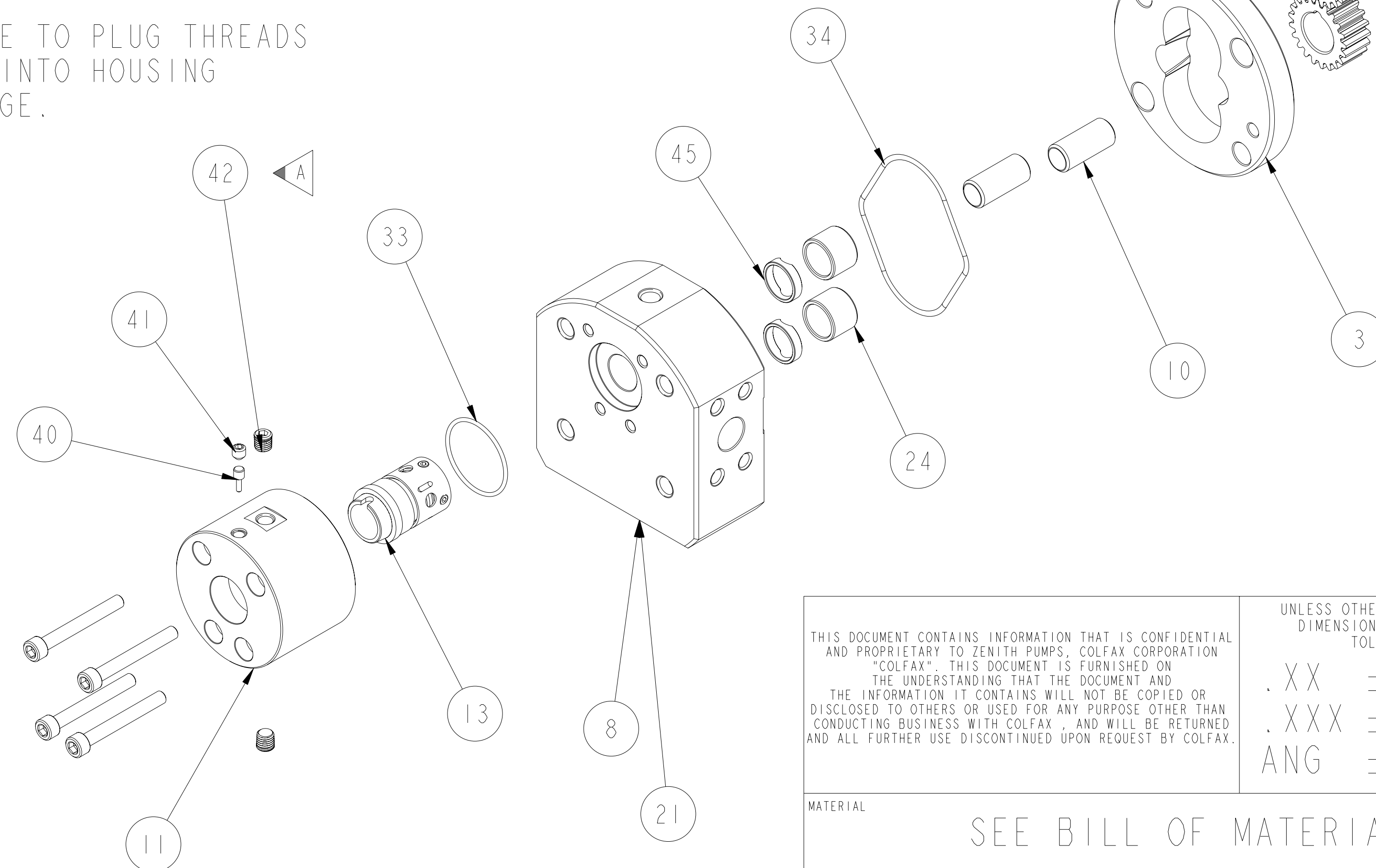
ITEM No.	PART NUMBER	PART NAME	MATERIAL	QTY
	119000459010	C-9000 4.5 CC/REV RAN 901		1
8	146945200174	ASSEMBLY, FRONT PLATE		1
21	156945200384	PLATE, FRONT	ZPI222	1
45	150752000061	BUSHING, SPACER	316 S.S.	2
24	150453100091	BEARING, SLEEVE	ZPI186	2
5	152521900242	GEAR, DRIVING	ZP2724	2
2	157956800732	SHAFT, DRIVE	ZP2724	1
4	185600800361	KEY, ROUND	303 SS	2
9	150115600392	ARBOR	ZP2724	1
10	151609100591	DOWEL, HOLLOW	17-4PH	2
3	156925100564	PLATE, GEAR	ZPI222	1
7	146915100162	ASSEMBLY, REAR PLATE		1
20	156915100374	PLATE, REAR	ZPI222	1
45	150752000061	BUSHING, SPACER	316 S.S.	2
23	150453100091	BEARING, SLEEVE	ZPI186	2
34	187650402761	O-RING	PTFE ENCAPSULATED FLUOROCARBON	2
11	155402000343	HOUSING, SEAL	ZPI222	1
13	187900300711	MECHANICAL SEAL, TYPE 59U	T59U/QRIC1/BP	1
33	187650401891_INV	O-RING	PTFE ENCAPSULATED FLUOROCARBON	1
17	185600800051	KEY, SQUARE	STEEL 50-1 K	1
30	150013100652	SEAL ASSEMBLY TOOL	ACETAL COPOLYMER	1
19	189341010802	SHCS M10X1.5 X 80 MM 316 SS		4
15	189340610502	SHCS M6X1 X 50MM 316 SS		5
40	151609100401	PIN, DOWEL	ZPI222	1
41	189300000351	M6 X 1.0P SOCKET SET SCREW	STAINLESS STEEL	1
42	187300000161	PLUG, DRYSEAL TYPE	316 S.S.	2
16	181831800142	RING - RETAINING	PH 15-7 MO	1

REVISIONS			
LTR	DESCRIPTION	DATE	ECN NO.
A	PLUG WAS 18-73000-0007-1	07/26/07	128-2007

LUBRICATE ALL O-RINGS ON LIP SEAL WITH PARKER O-RING LUBE OR EQUIVALENT, PRIOR TO INSTALLING INTO HOUSING.

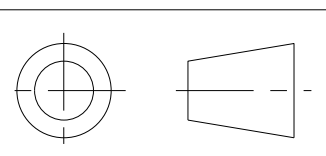



APPLY TEFLON TAPE TO PLUG THREADS WHEN ASSEMBLING INTO HOUSING TO PREVENT LEAKAGE.



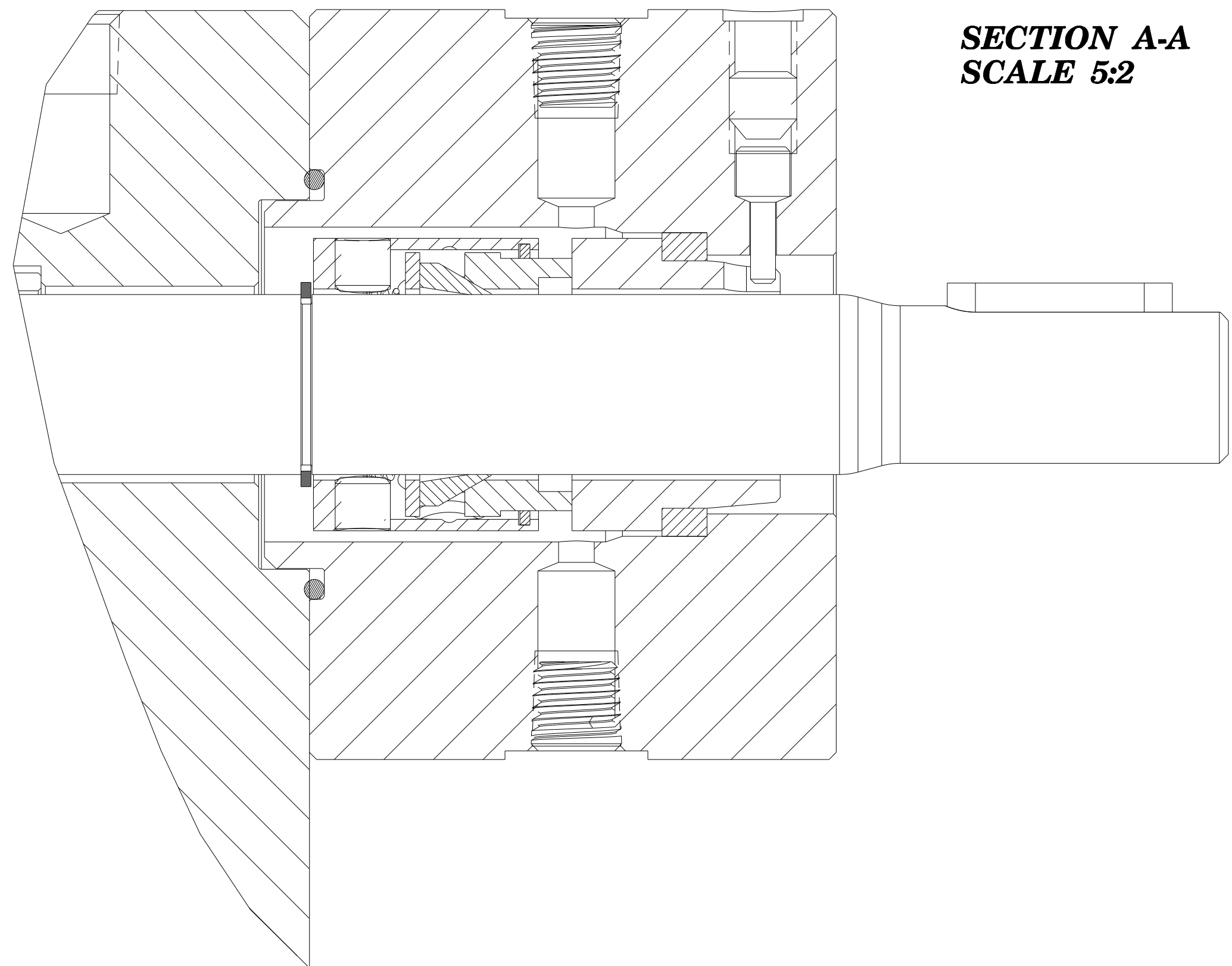
LUBRICATE UNDERSIDE OF CAP & THREADS ON FASTENERS WITH ANTI-SEIZE COMPOUND PRIOR TO ASSEMBLY.

INTERPRET PER ASME-Y14.5M 1994



THIS DOCUMENT CONTAINS INFORMATION THAT IS CONFIDENTIAL AND PROPRIETARY TO ZENITH PUMPS, COLFAX CORPORATION "COLFAX". THIS DOCUMENT IS FURNISHED ON THE UNDERSTANDING THAT THE DOCUMENT AND THE INFORMATION IT CONTAINS WILL NOT BE COPIED OR DISCLOSED TO OTHERS OR USED FOR ANY PURPOSE OTHER THAN CONDUCTING BUSINESS WITH COLFAX, AND WILL BE RETURNED AND ALL FURTHER USE DISCONTINUED UPON REQUEST BY COLFAX.	UNLESS OTHERWISE SPECIFIED DIMENSIONS ARE IN INCH TOLERANCES .XX ± 0.01 .XXX ± 0.005 ANG ± 0.5	DRAWN MBR 03/15/04 CHECKED Y	 <b>ZENITH PUMPS</b> 5910 ELWIN BUCHANAN DRIVE SANFORD, NC 27330
	MATERIAL SEE BILL OF MATERIAL	PART WEIGHT = 48.339 LBS SURFACE AREA = 371.839 IN <sup>2</sup>	
		MODEL NUMBER = 119000459010 DRAWING = 119000459010	SCALE 5:8 SHEET 2 OF 3
		PRO/ENGINEER DRAWING SIZE D	DRAWING NUMBER 11-90004-5901-0

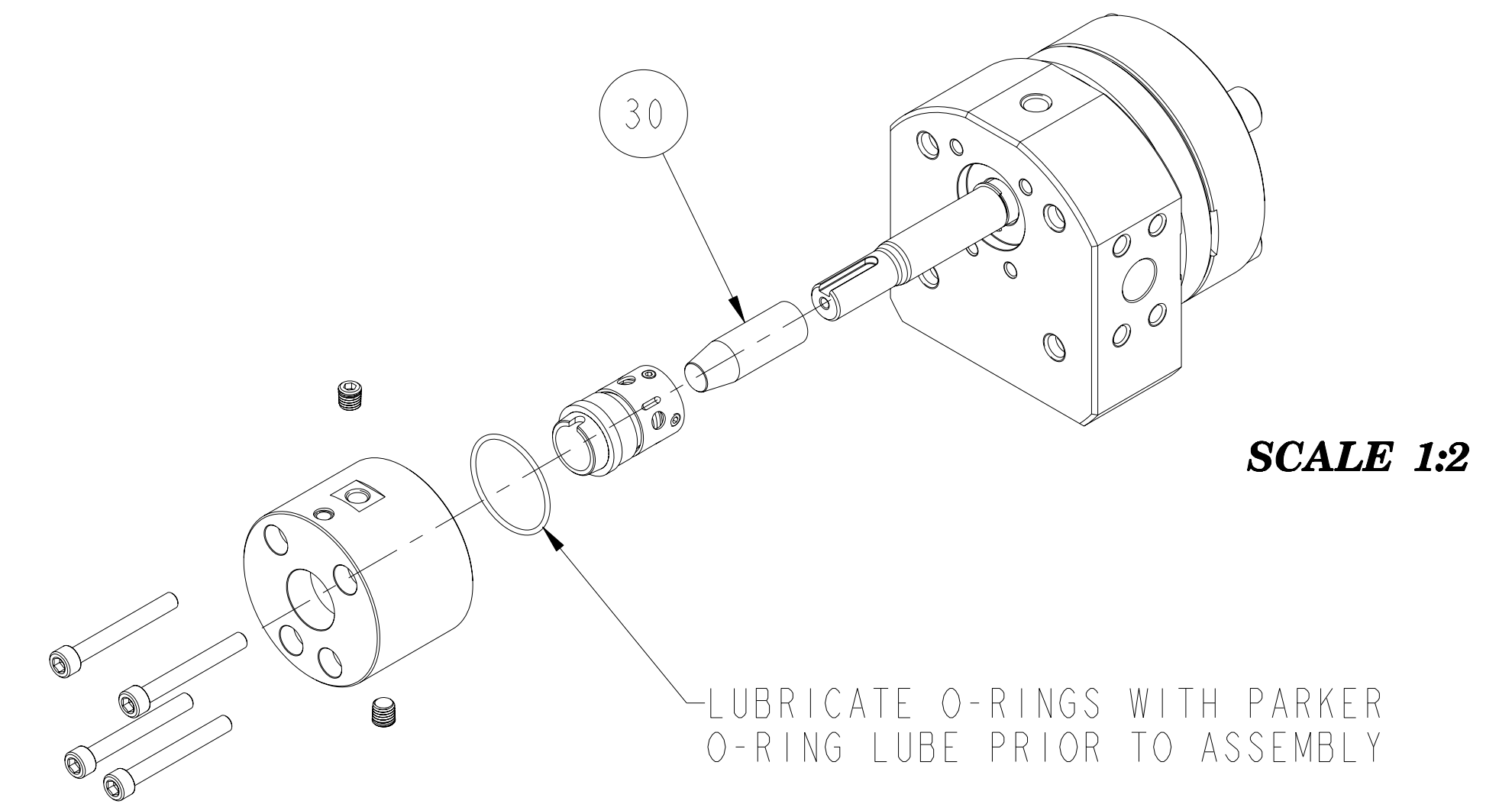
REVISIONS			
LTR	DESCRIPTION	DATE	ECN NO.
A	PLUG WAS 18-73000-0007-1	07/26/07	128-2007



**SECTION A-A**  
**SCALE 5:2**

LUBRICATE UNDERSIDE OF CAP & THREADS ON FASTENERS WITH ANTI-SEIZE COMPOUND PRIOR TO ASSEMBLY.

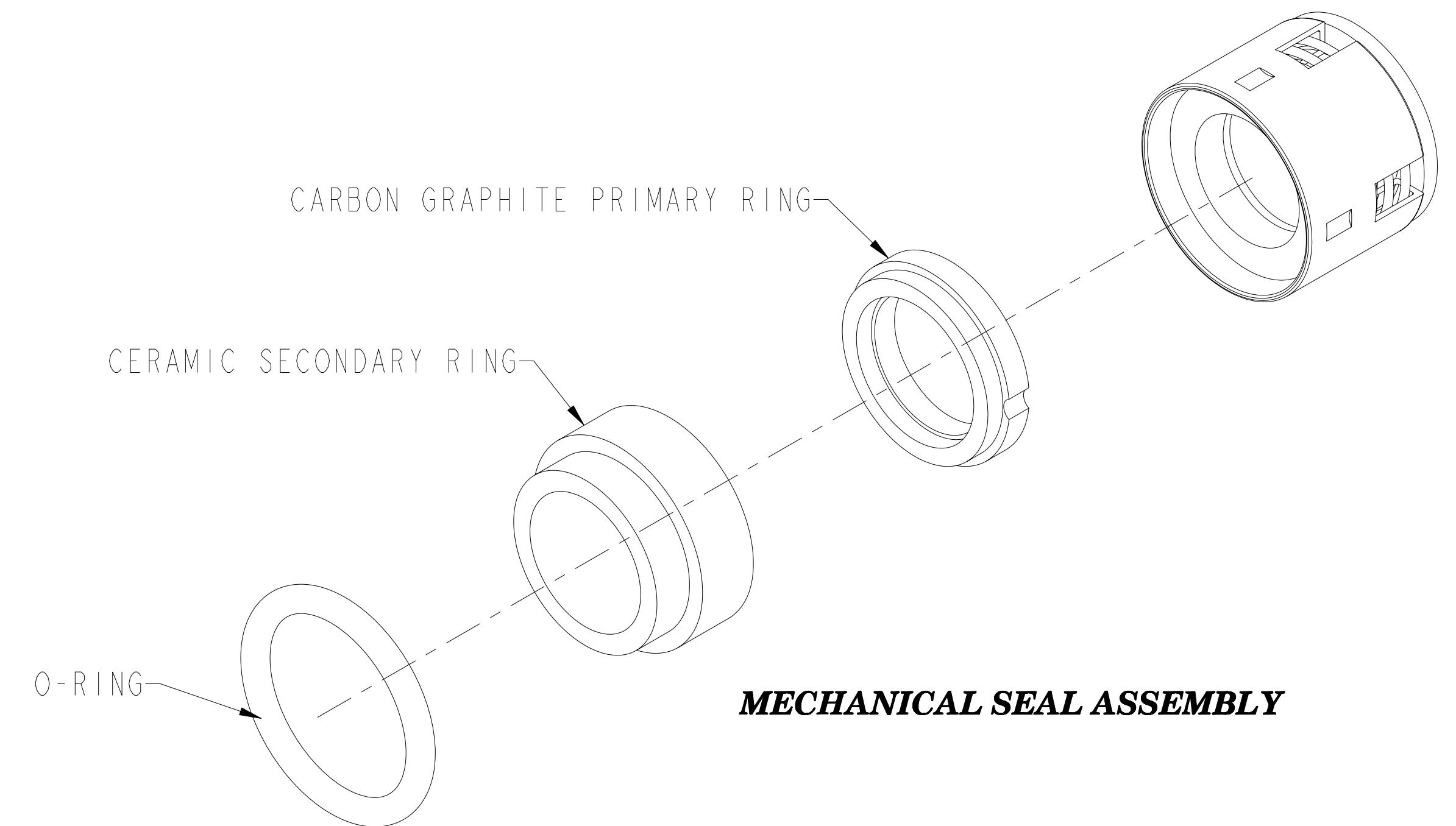
INSTALL SEAL ASSEMBLY TOOL ONTO SHAFT TO COVER KEYWAY DURING SEAL INSTALLATION, TO PREVENT DAMAGE.



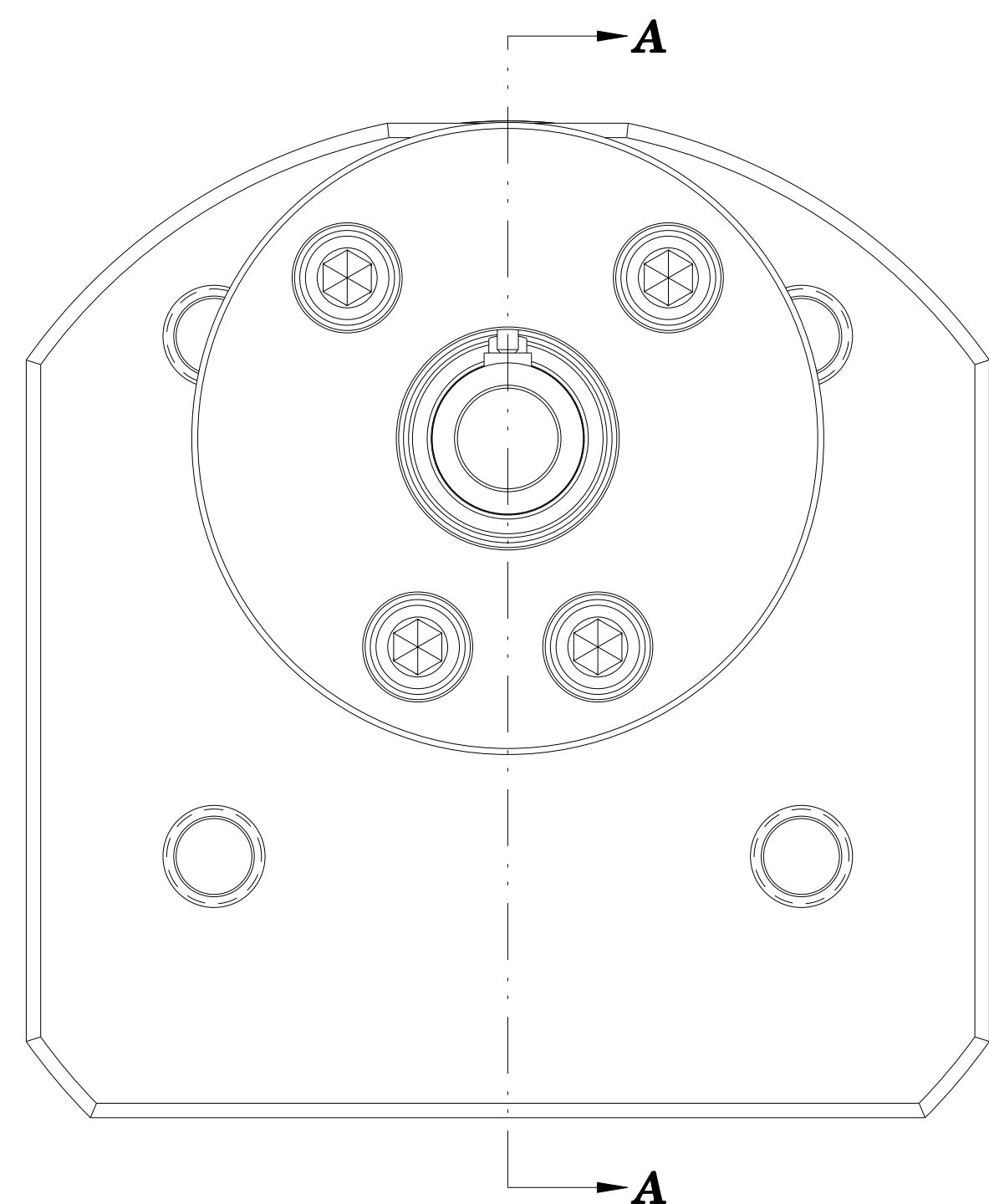
**SCALE 1:2**

TO PREVENT DAMAGE  
INSTALL SEAL ASSEMBLY TOOL  
ONTO SHAFT TO COVER KEYWAY  
DURING SEAL INSTALLATION.

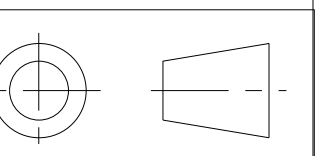
PRESS SEAT AND O-RING FIRMLY  
INTO SEAL HOUSING PRIOR  
TO INSTALLING ONTO PUMP.




**MECHANICAL SEAL ASSEMBLY**



INTERPRET PER ASME-Y14.5M 1994



<small>THIS DOCUMENT CONTAINS INFORMATION THAT IS CONFIDENTIAL AND PROPRIETARY TO ZENITH PUMPS, COLFAX CORPORATION "COLFAX". THIS DOCUMENT IS FURNISHED ON THE UNDERSTANDING THAT THE DOCUMENT AND THE INFORMATION IT CONTAINS WILL NOT BE COPIED OR DISCLOSED TO OTHERS OR USED FOR ANY PURPOSE OTHER THAN CONDUCTING BUSINESS WITH COLFAX, AND WILL BE RETURNED AND ALL FURTHER USE DISCONTINUED UPON REQUEST BY COLFAX.</small>	<small>UNLESS OTHERWISE SPECIFIED DIMENSIONS ARE IN INCH TOLERANCES</small> .XX ± 0.01 .XXX ± 0.005 ANG ± 0.5	DRAWN	MBR	03/15/04	 <b>ZENITH PUMPS</b> 5910 ELWIN BUCHANAN DRIVE SANFORD, NC 27330
		CHECKED			
MATERIAL SEE BILL OF MATERIAL		PART WEIGHT = 48.339 LBS			C-9000 4.5 CC/REV RAN 901 SINGLE STREAM PUMP
		SURFACE AREA = 371.839 IN <sup>2</sup>			
		MODEL NUMBER = 119000459010 DRAWING = 119000459010	PRO/ENGINEER DRAWING	SIZE D	
		DRAWING NUMBER			11-90004-5901-0