

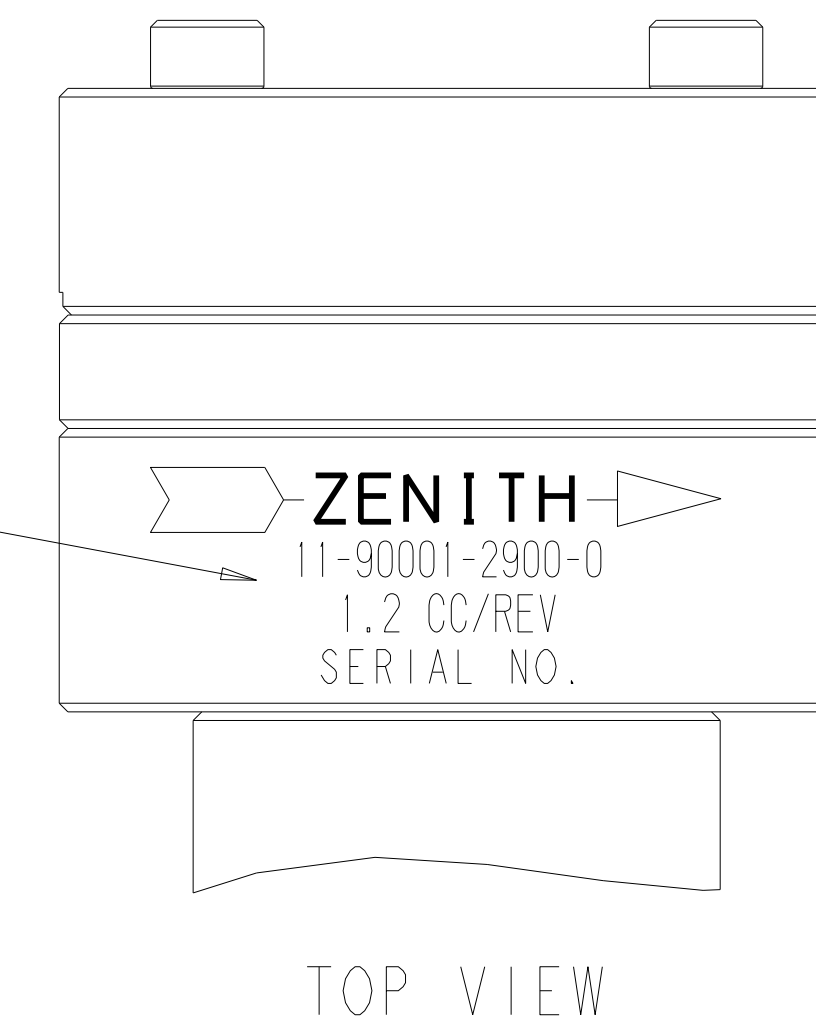
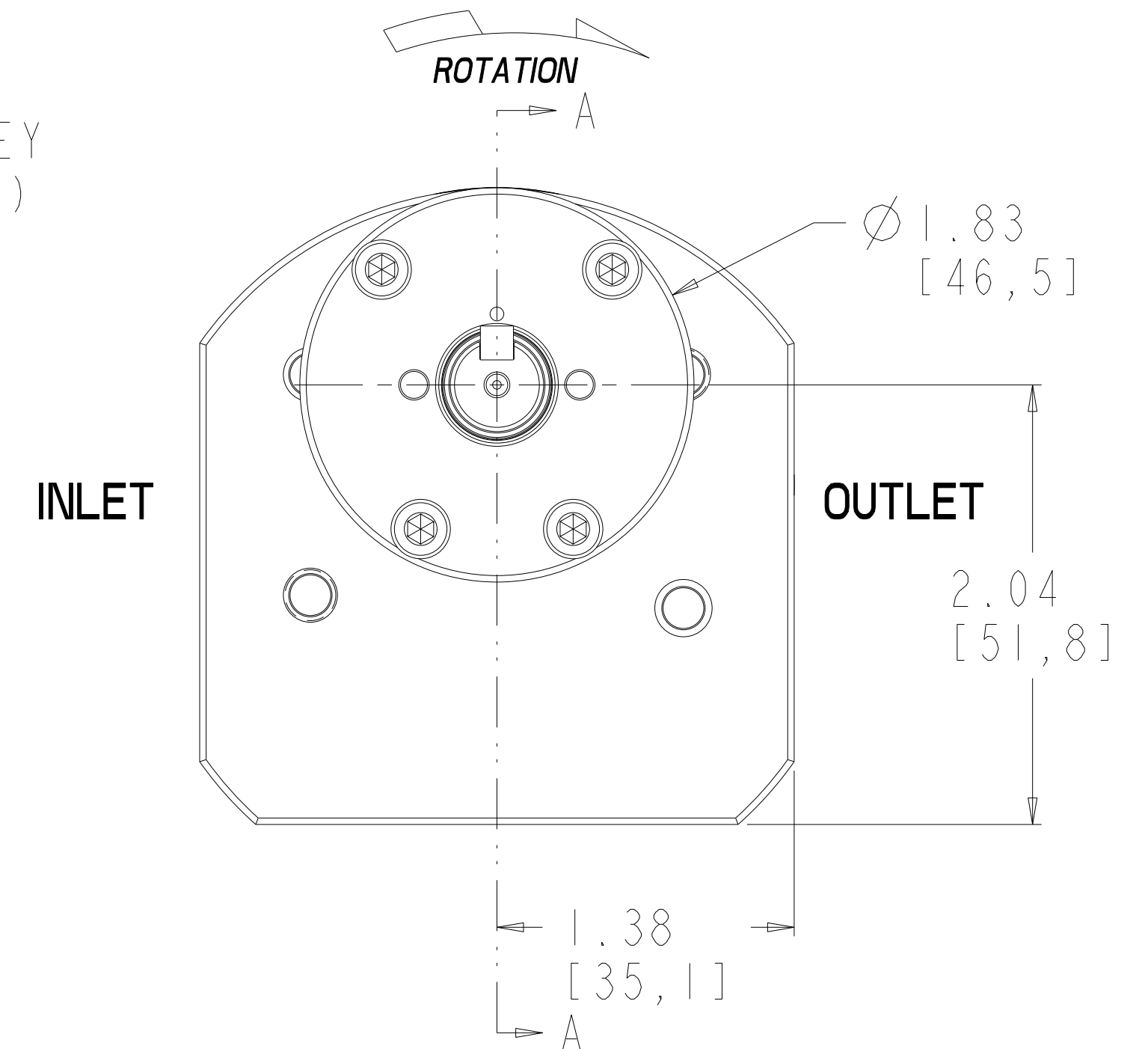
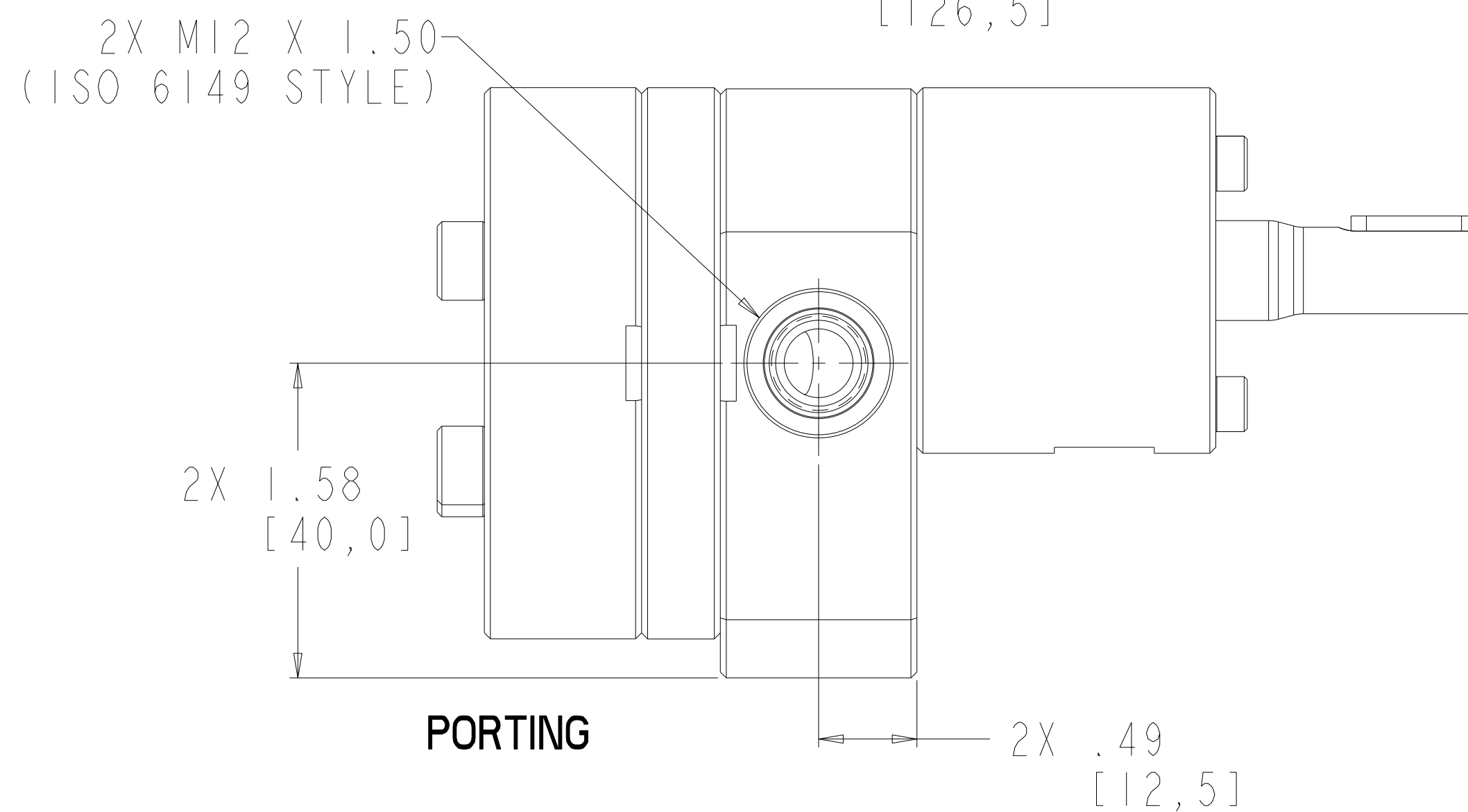
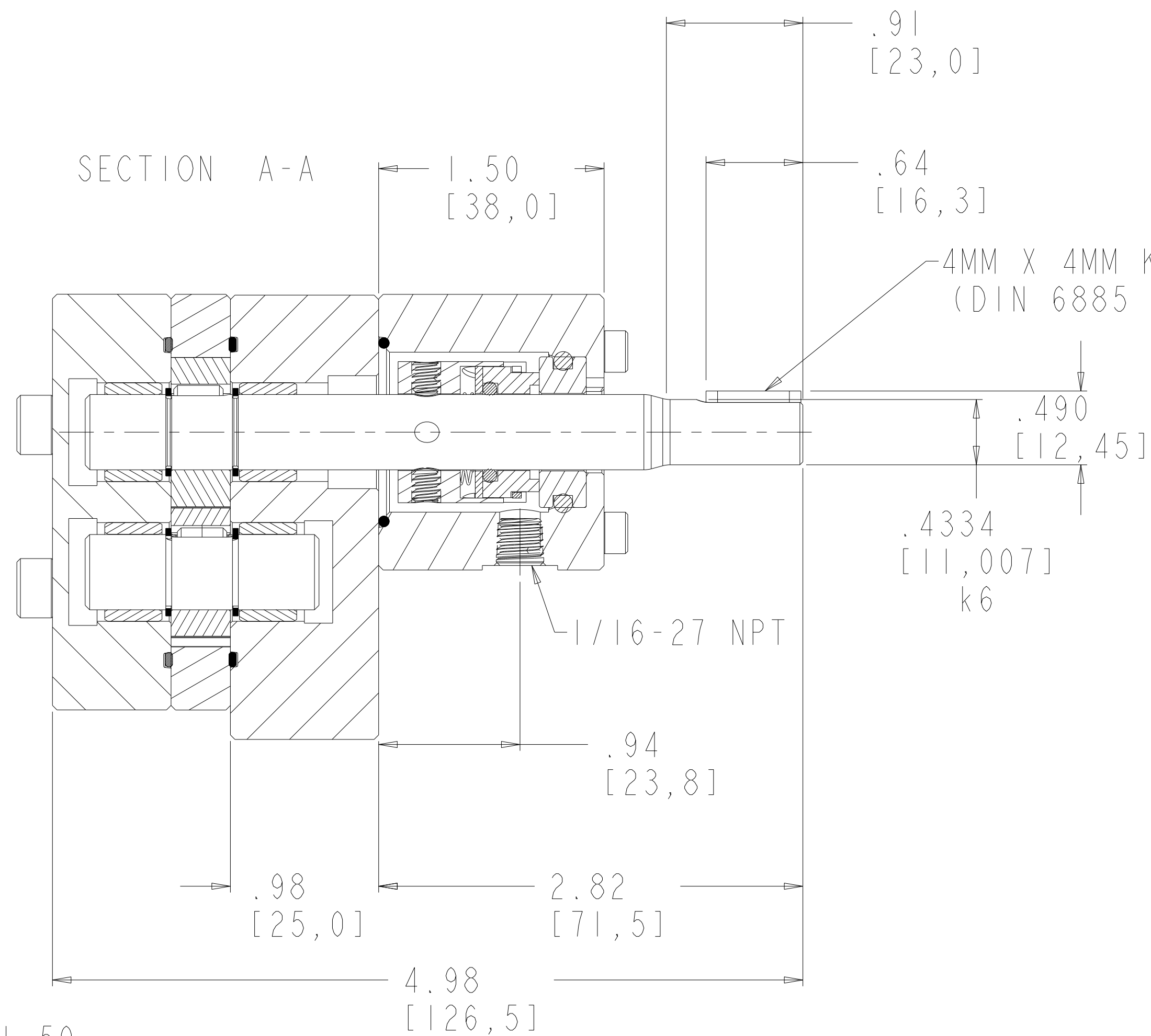
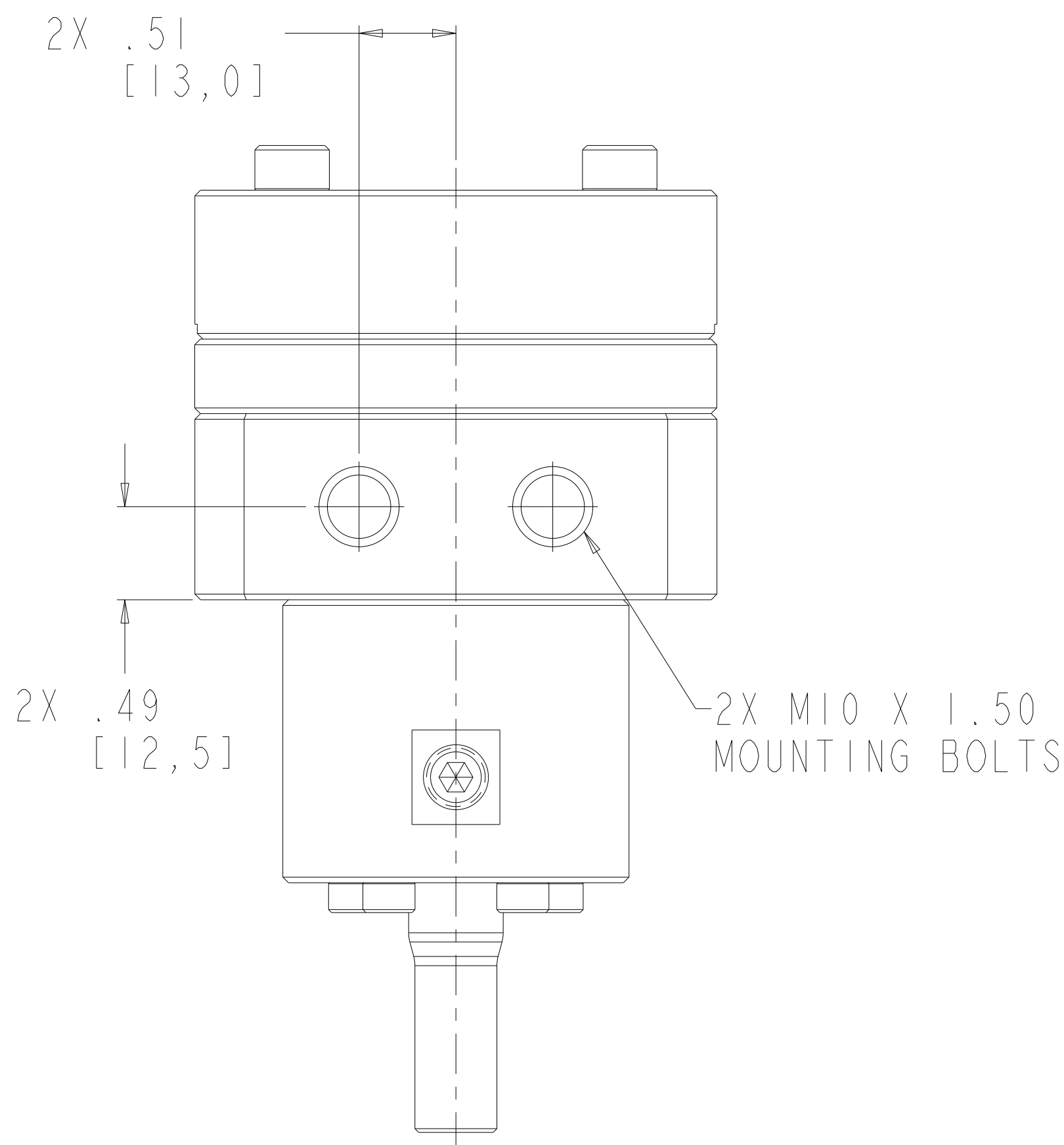
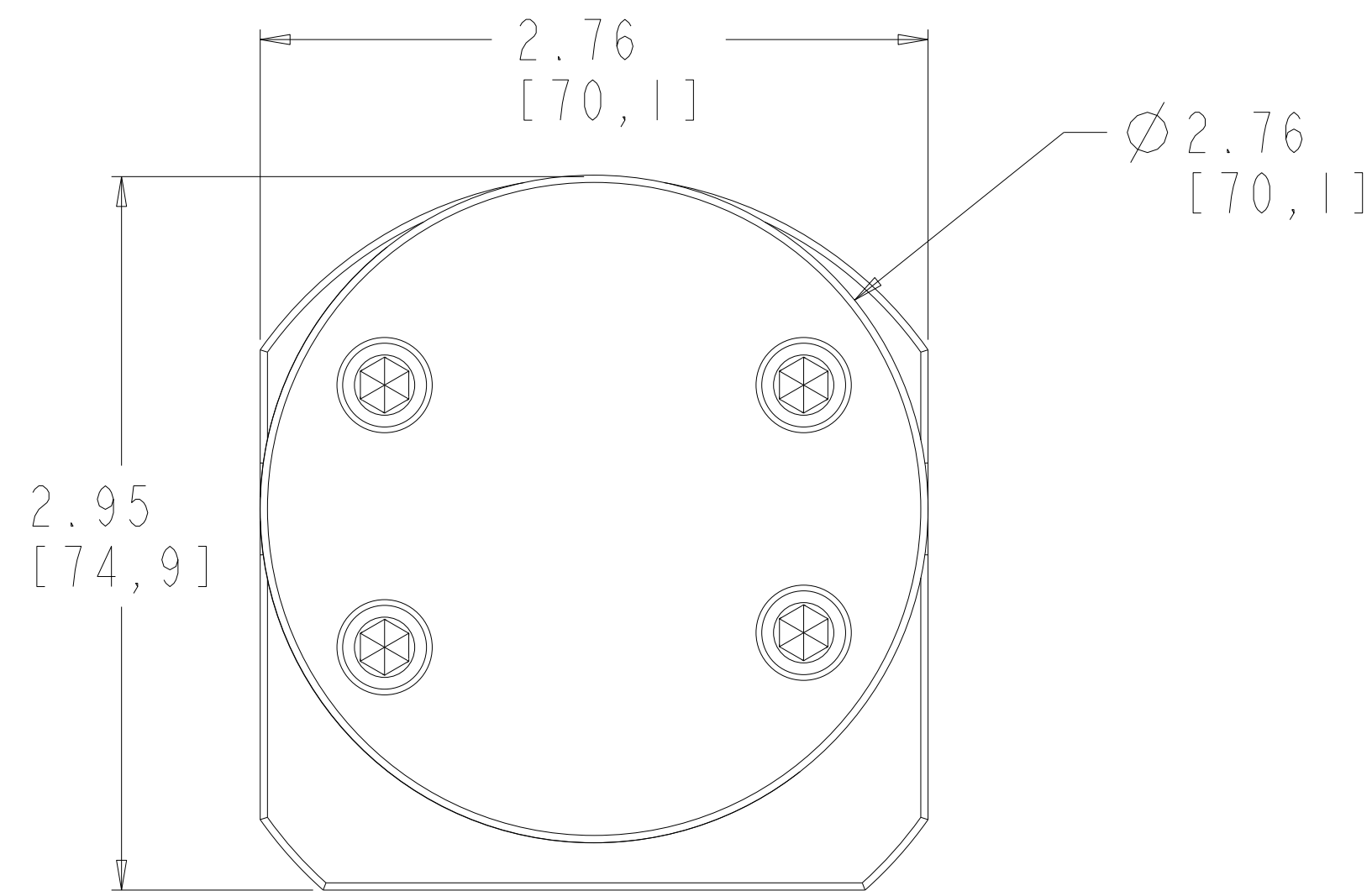
TORQUE CHART

M6 BOLTS LUBRICATED = 70 lb.-in. (7.9 N-m)

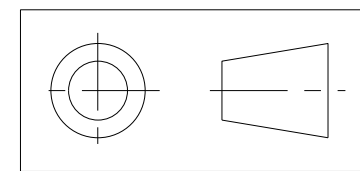
M4 BOLTS LUBRICATED = 20 lb.-in. (2.3N-m)

M10 BOLTS (MOUNTING) LUBRICATED = 335 lb.-in. (37.8 N-m)

REVISIONS			
LTR	DESCRIPTION	DATE	ECN NO.
H	PLUG WAS 18-73000-0007-1	07/24/07	127-2007



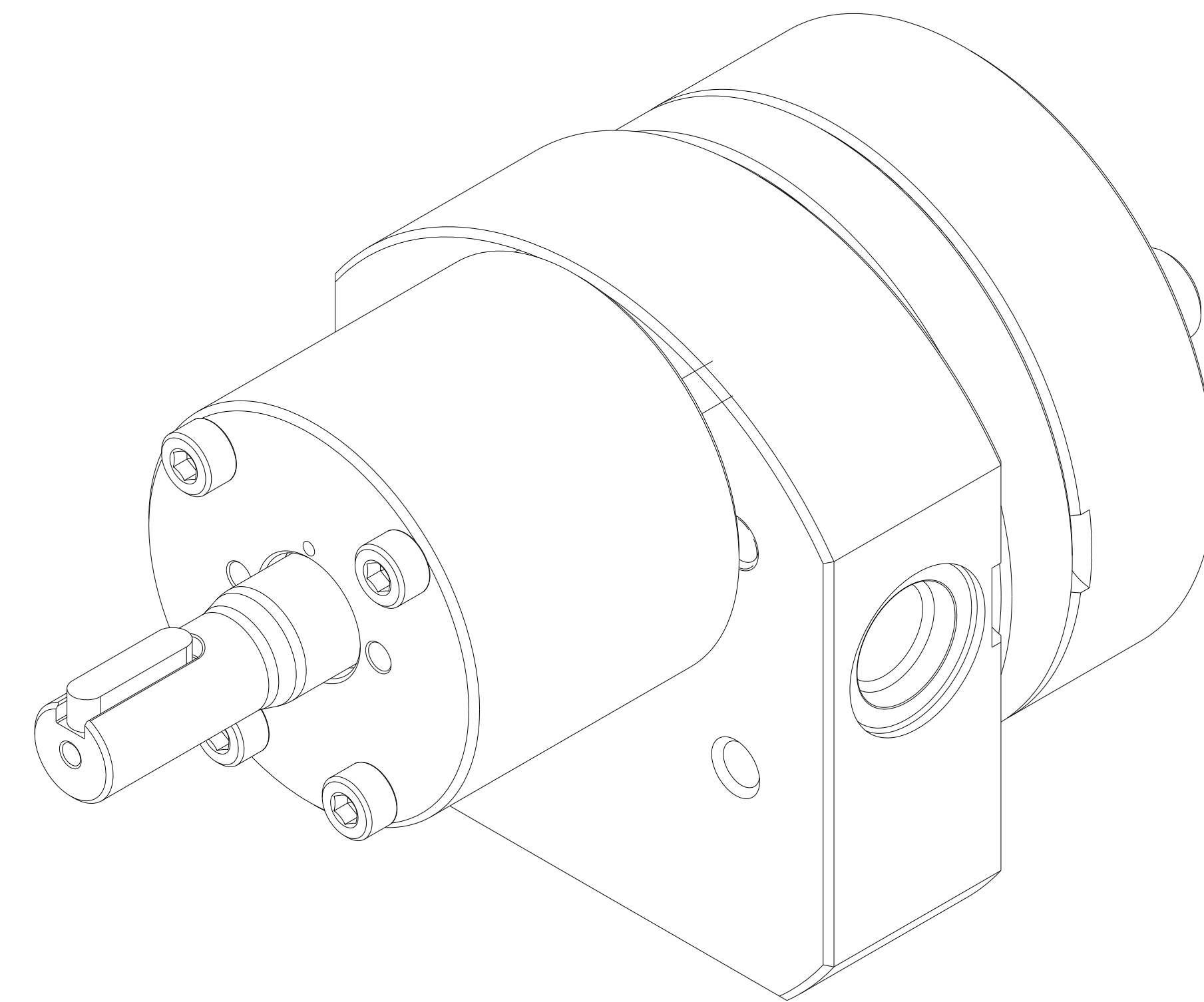
INTERPRET PER ASME-Y14.5M 1994



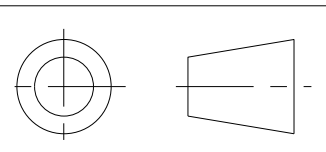
<p>THIS DOCUMENT CONTAINS INFORMATION THAT IS CONFIDENTIAL AND PROPRIETARY TO ZENITH PUMPS, COLFAX CORPORATION "COLFAX". THIS DOCUMENT IS FURNISHED ON THE UNDERSTANDING THAT THE DOCUMENT AND THE INFORMATION IT CONTAINS WILL NOT BE COPIED OR DISCLOSED TO OTHERS OR USED FOR ANY PURPOSE OTHER THAN CONDUCTING BUSINESS WITH COLFAX, AND WILL BE RETURNED AND ALL FURTHER USE DISCONTINUED UPON REQUEST BY COLFAX.</p>	<p>UNLESS OTHERWISE SPECIFIED DIMENSIONS ARE IN INCH TOLERANCES</p> <p>.XX ± 0.01 .XXX ± 0.005 ANG ± 0.5</p>	<p>DRAWN LG 1.25.99</p>	<p>ZENITH PUMPS 5910 ELWIN BUCHANAN DRIVE SANFORD, NC 27330</p>
	<p>MATERIAL SEE BILL OF MATERIALS SHEET 2</p>	<p>CHECKED</p>	
		<p>PRO/ENGINEER DRAWING SIZE D</p>	<p>C-9000 TYPE PUMP 1.2 CC/REV RANDOM 900</p>
		<p>SHEET 1 OF 3</p>	<p>SCALE 3:2 DRAWING NUMBER 11-90001-2900-0</p>


ITEM No.	PART NUMBER	PART NAME	MATERIAL	QTY
	119000129000	C-9000 TYPE PUMP		1
5	152020901632	GEAR, DRIVING	ZP2724	2
16	181831800122	RING - RETAINING	PH 15-7 MO	4
2	157956800502	SHAFT, DRIVE	ZP2724	1
3	156925100384	PLATE, GEAR	316SS PER MAT 306	1
7	146915100112	ASSEMBLY, REAR PLATE		1
20	156915100274	PLATE, REAR	ZP1222	1
23	150453100031	BEARING, SLEEVE	ZP1186	2
34	187650402101	O-RING	PTFE ENCAPSULATED	2
8	146945200112	ASSEMBLY, FRONT PLATE		1
21	156945200294	PLATE, FRONT	ZP1222	1
24	150453100031	BEARING, SLEEVE	ZP1186	2
10	151609100621	DOWEL, HOLLOW	17-4PH	2
4	155600205741	KEY, ROUND	AISI 316SS	2
11	155402000293	HOUSING, SEAL	316SS PER MAT 306	1
33	187650402091	O-RING	PTFE ENCAPSULATED	1
19	189340610502	SHCS M6X1 X 50MM 316 SS		4
17	185600800061	KEY, SQUARE W/RND ENDS	STEEL 50-1K	1
18	189340410452	SHCS M4X0.7 X 45 MM 316 SS		4
13	187900300531	TYPE 8-IT MECHANICAL SEAL	X VITON O-RING	1
35	187300000161	PLUG, DRYSEAL TYPE	316 S.S.	1
9	150115600312	ARBOR	ZP2724	1
30	150013100642	SEAL ASSEMBLY TOOL	ACETAL COPOLYMER	1

REVISIONS			
LTR	DESCRIPTION	DATE	ECN NO.
H	PLUG WAS 18-73000-0007-1	07/24/07	127-2007

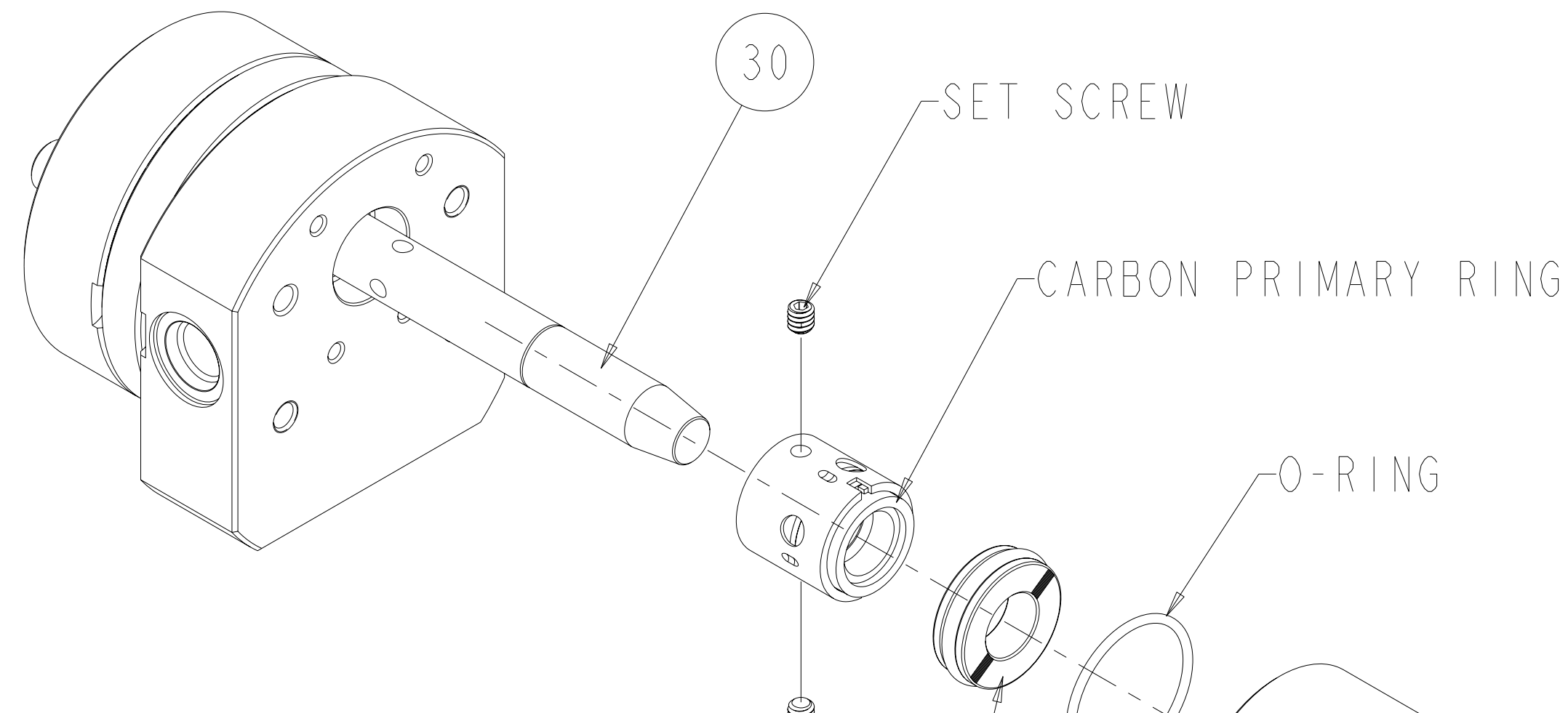


INTERPRET PER ASME-Y14.5M 1994



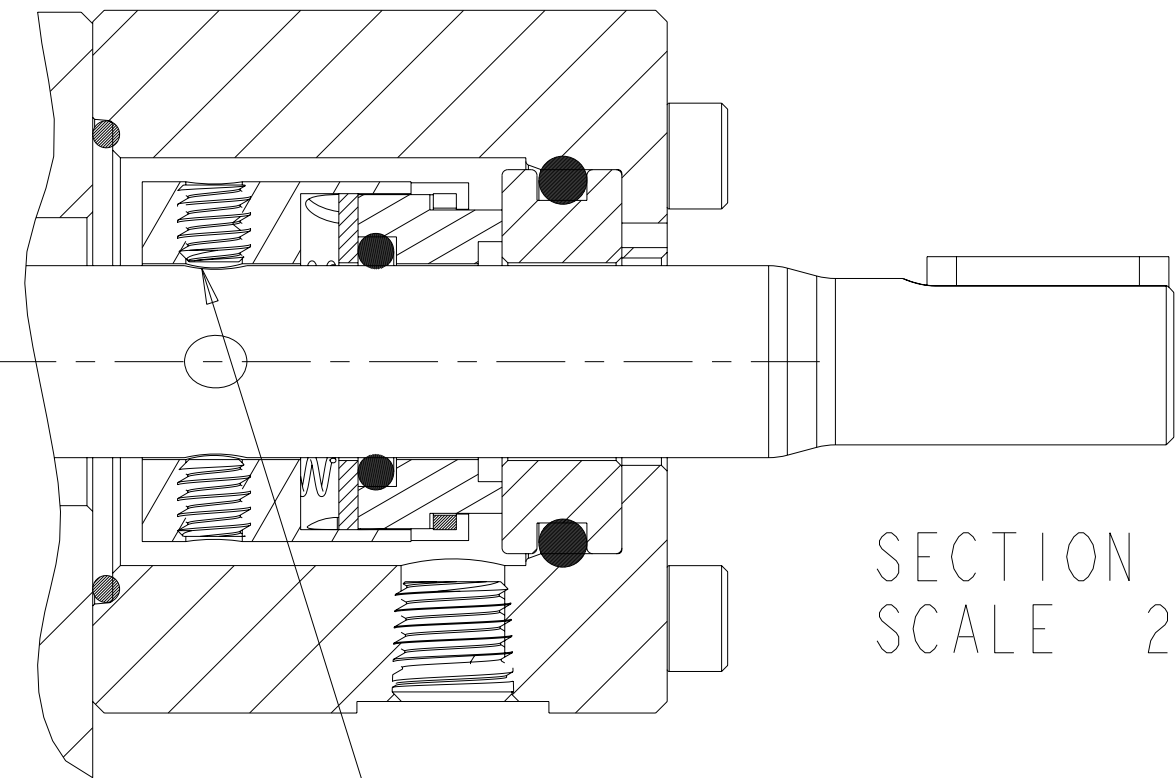
<small>THIS DOCUMENT CONTAINS INFORMATION THAT IS CONFIDENTIAL AND PROPRIETARY TO ZENITH PUMPS, COLFAX CORPORATION "COLFAX". THIS DOCUMENT IS FURNISHED ON THE UNDERSTANDING THAT THE DOCUMENT AND THE INFORMATION IT CONTAINS WILL NOT BE COPIED OR DISCLOSED TO OTHERS OR USED FOR ANY PURPOSE OTHER THAN CONDUCTING BUSINESS WITH COLFAX, AND WILL BE RETURNED AND ALL FURTHER USE DISCONTINUED UPON REQUEST BY COLFAX.</small>	<small>UNLESS OTHERWISE SPECIFIED DIMENSIONS ARE IN INCH TOLERANCES</small> .XX ± 0.01 .XXX ± 0.005 ANG ± 0.5	DRAWN LG	1.25.99	 ZENITH PUMPS 5910 ELWIN BUCHANAN DRIVE SANFORD, NC 27330
		CHECKED		
MATERIAL SEE BILL OF MATERIALS SHEET 2		PART WEIGHT =	LBS	C-9000 TYPE PUMP 1.2 CC/REV RANDOM 900
		SURFACE AREA =	IN^2	
		MODEL NUMBER = 119000129000 DRAWING = 119000129000		
		PRO/ENGINEER DRAWING	SIZE D	SCALE 2:1 SHEET 2 OF 3 DRAWING NUMBER 11-90001-2900-0

REVISIONS			
LTR	DESCRIPTION	DATE	ECN NO.
H	PLUG WAS 18-73000-0007-1	07/24/07	127-2007



INSTALL SEAL ASSEMBLY TOOL ONTO SHAFT TO COVER KEYWAY DURING SEAL INSTALLATION, TO PREVENT DAMAGE.

SECONDARY RING OR SEAT W/ O-RING INSTALL UNPOLISHED FACE OF SEAT (MARKED IN BLACK) INTO SEAL HOUSING AS SHOWN



SECTION A-A
SCALE 2:1

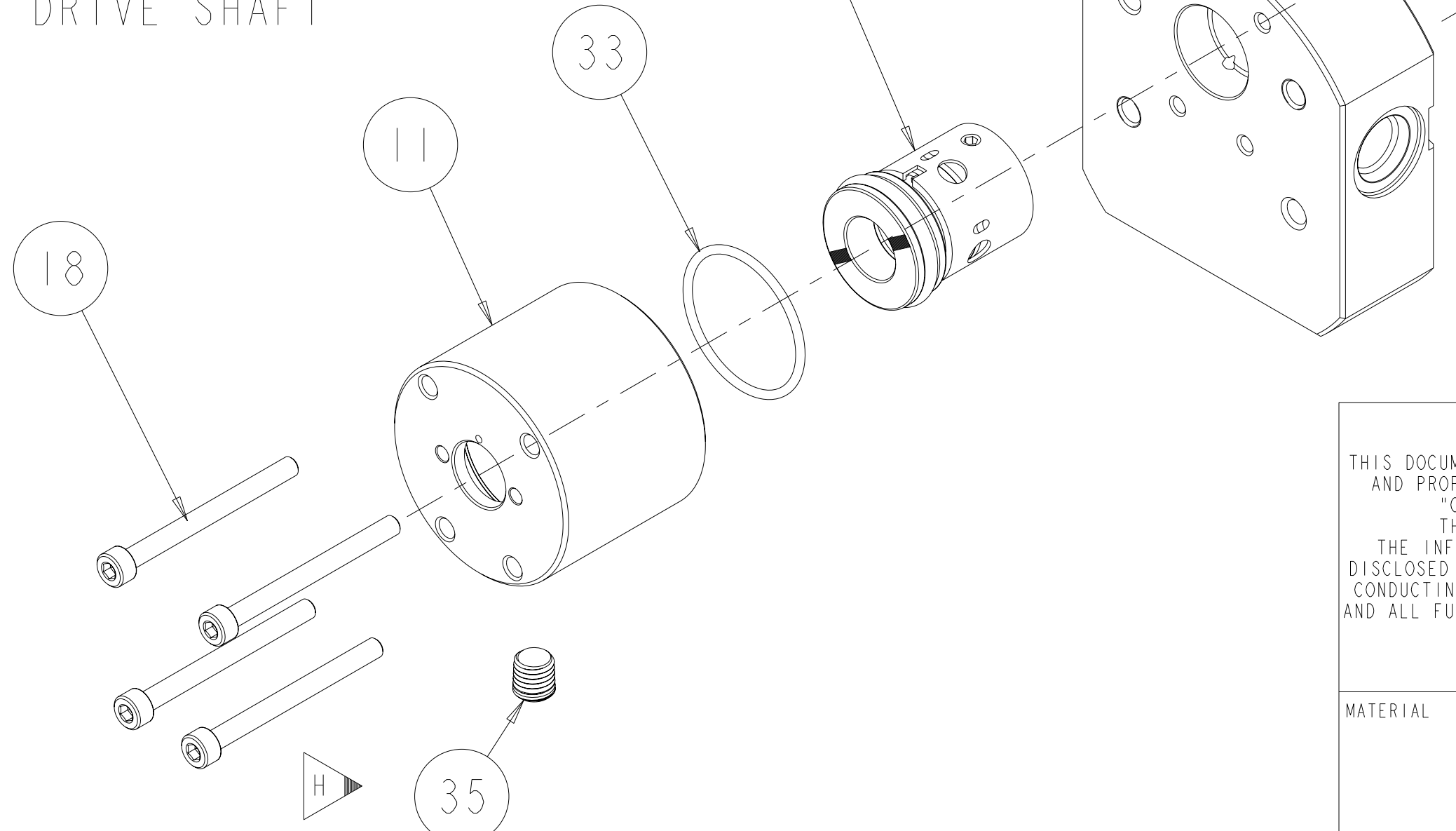
ALIGN SET SCREWS WITH DEPRESSIONS IN DRIVE SHAFT

PLUG

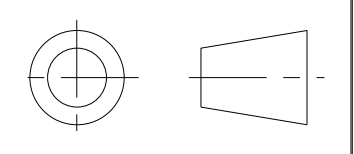
LUBRICATE UNDERSIDE OF CAP & THREADS ON FASTENERS WITH ANTI-SEIZE COMPOUND PRIOR TO ASSEMBLY.

LUBRICATE ALL O-RINGS ON LIP SEAL WITH PARKER O-RING LUBE OR EQUIVALENT, PRIOR TO INSTALLING INTO HOUSING.

APPLY TEFLON TAPE TO PLUG THREADS WHEN ASSEMBLING INTO HOUSING TO PREVENT LEAKAGE.



INTERPRET PER ASME-Y14.5M 1994



<small>THIS DOCUMENT CONTAINS INFORMATION THAT IS CONFIDENTIAL AND PROPRIETARY TO ZENITH PUMPS, COLFAX CORPORATION "COLFAX". THIS DOCUMENT IS FURNISHED ON THE UNDERSTANDING THAT THE DOCUMENT AND THE INFORMATION IT CONTAINS WILL NOT BE COPIED OR DISCLOSED TO OTHERS OR USED FOR ANY PURPOSE OTHER THAN CONDUCTING BUSINESS WITH COLFAX, AND WILL BE RETURNED AND ALL FURTHER USE DISCONTINUED UPON REQUEST BY COLFAX.</small>	<small>UNLESS OTHERWISE SPECIFIED DIMENSIONS ARE IN INCH TOLERANCES</small> .XX ± 0.01 .XXX ± 0.005 ANG ± 0.5		DRAWN LG 1.25.99 CHECKED	ZENITH PUMPS 5910 ELWIN BUCHANAN DRIVE SANFORD, NC 27330
	MATERIAL SEE BILL OF MATERIALS SHEET 2		PART WEIGHT = LBS SURFACE AREA = IN ² MODEL NUMBER = 119000129000 DRAWING = 119000129000	
			PRO/ENGINEER DRAWING SIZE D	SCALE 1:1 SHEET 3 OF 3 DRAWING NUMBER 11-90001-2900-0