

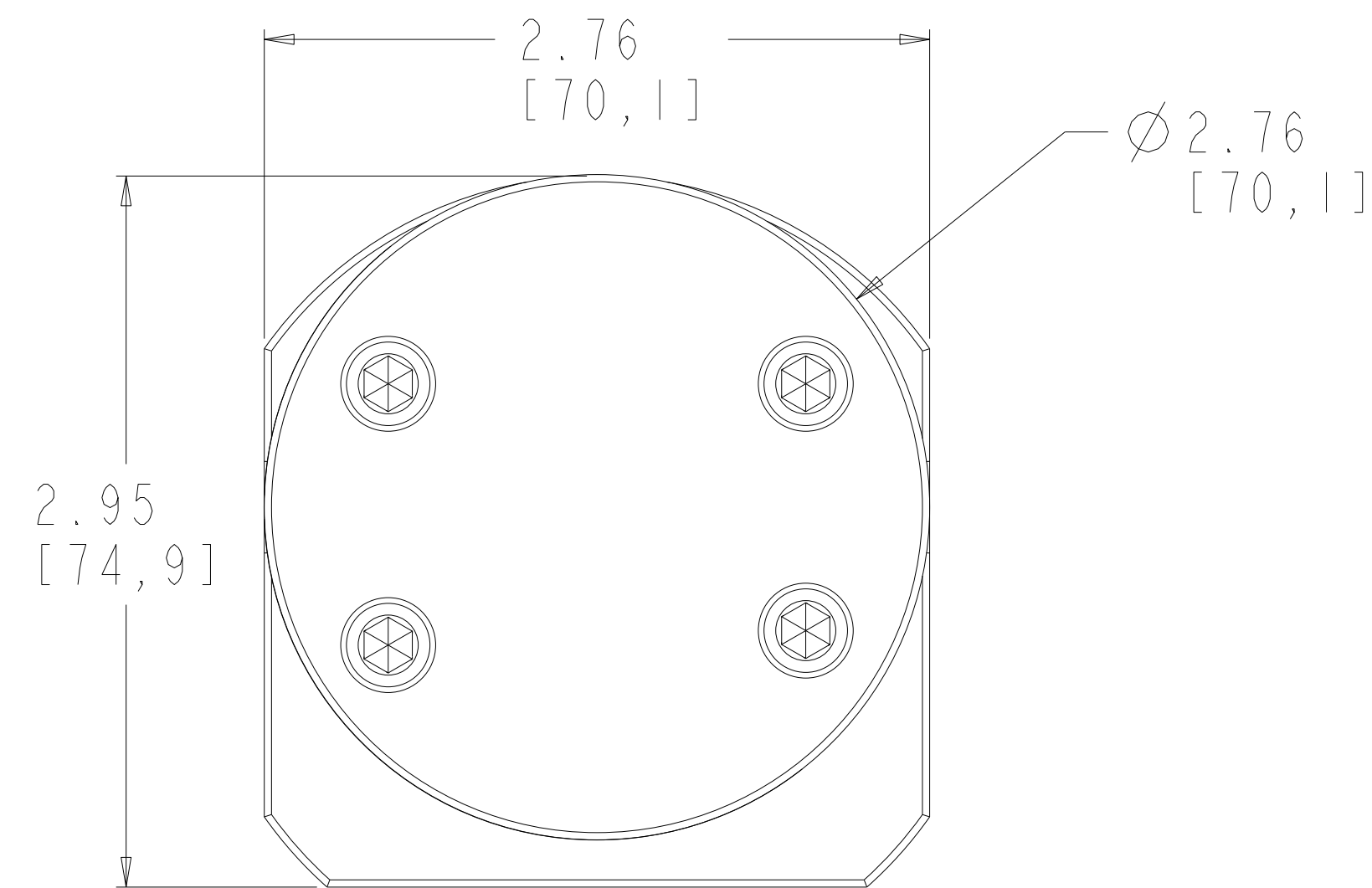
**TORQUE CHART**

**M6 BOLTS LUBRICATED = 70 lb.-in. (7.9 N-m)**

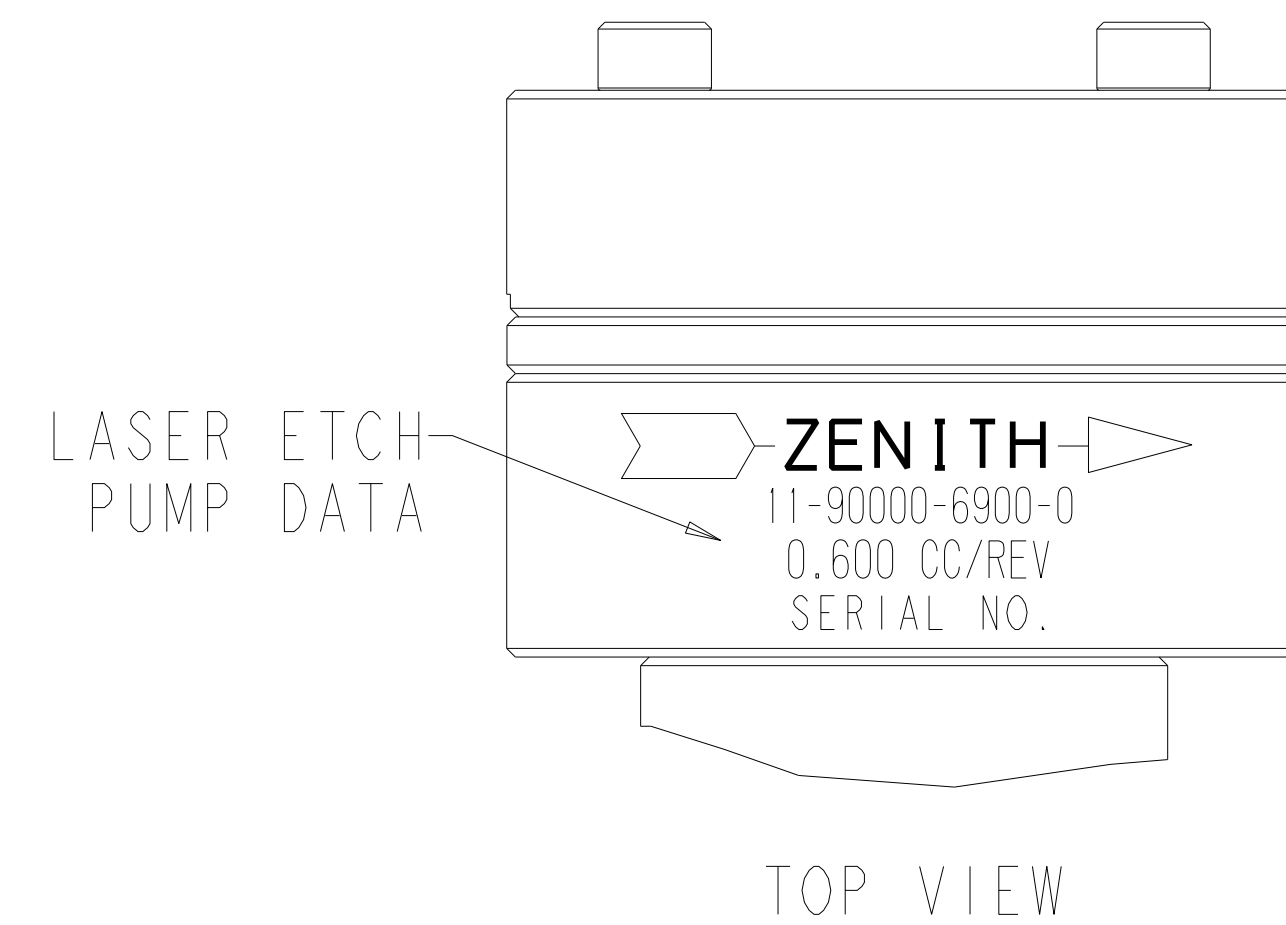
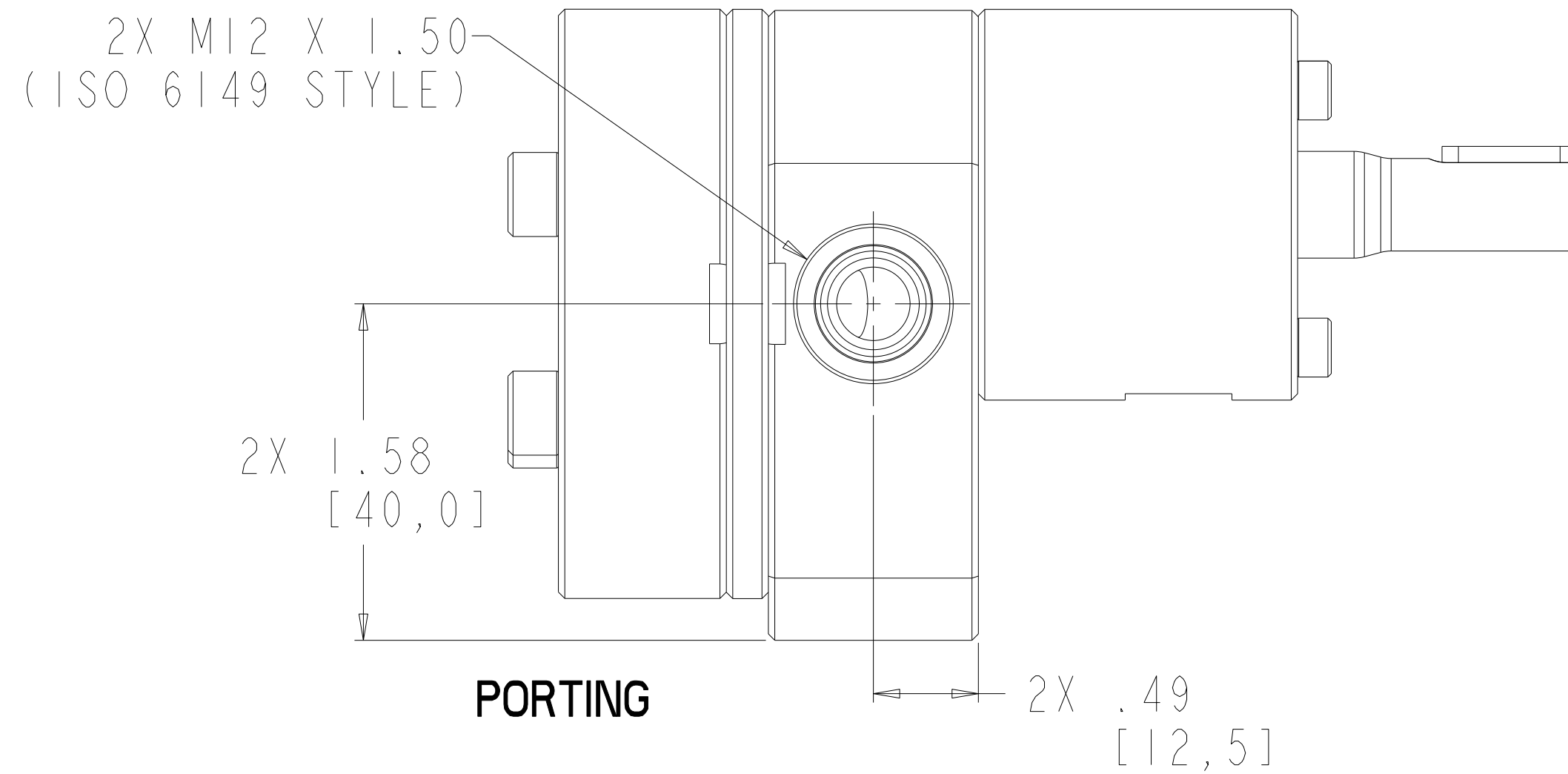
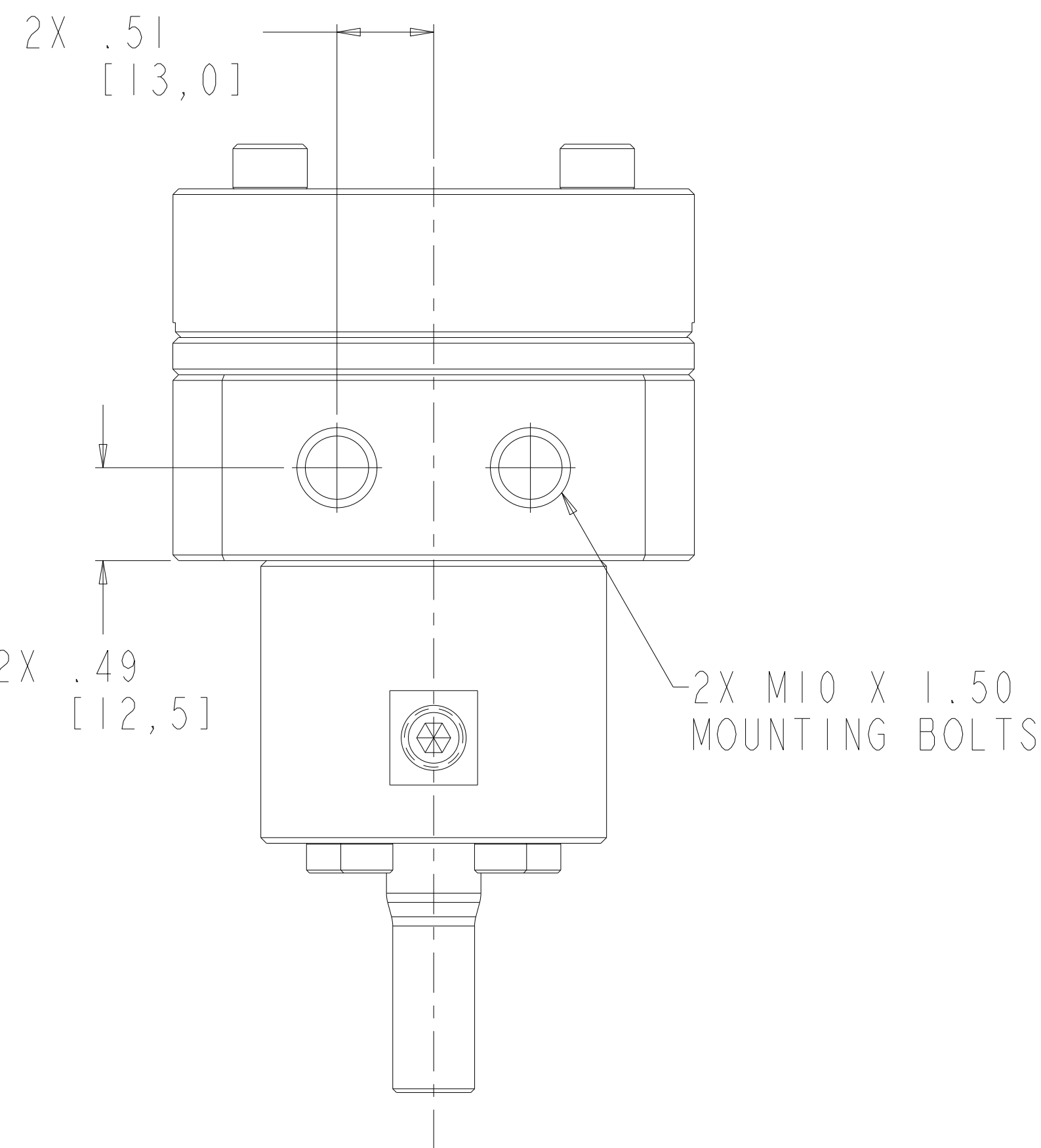
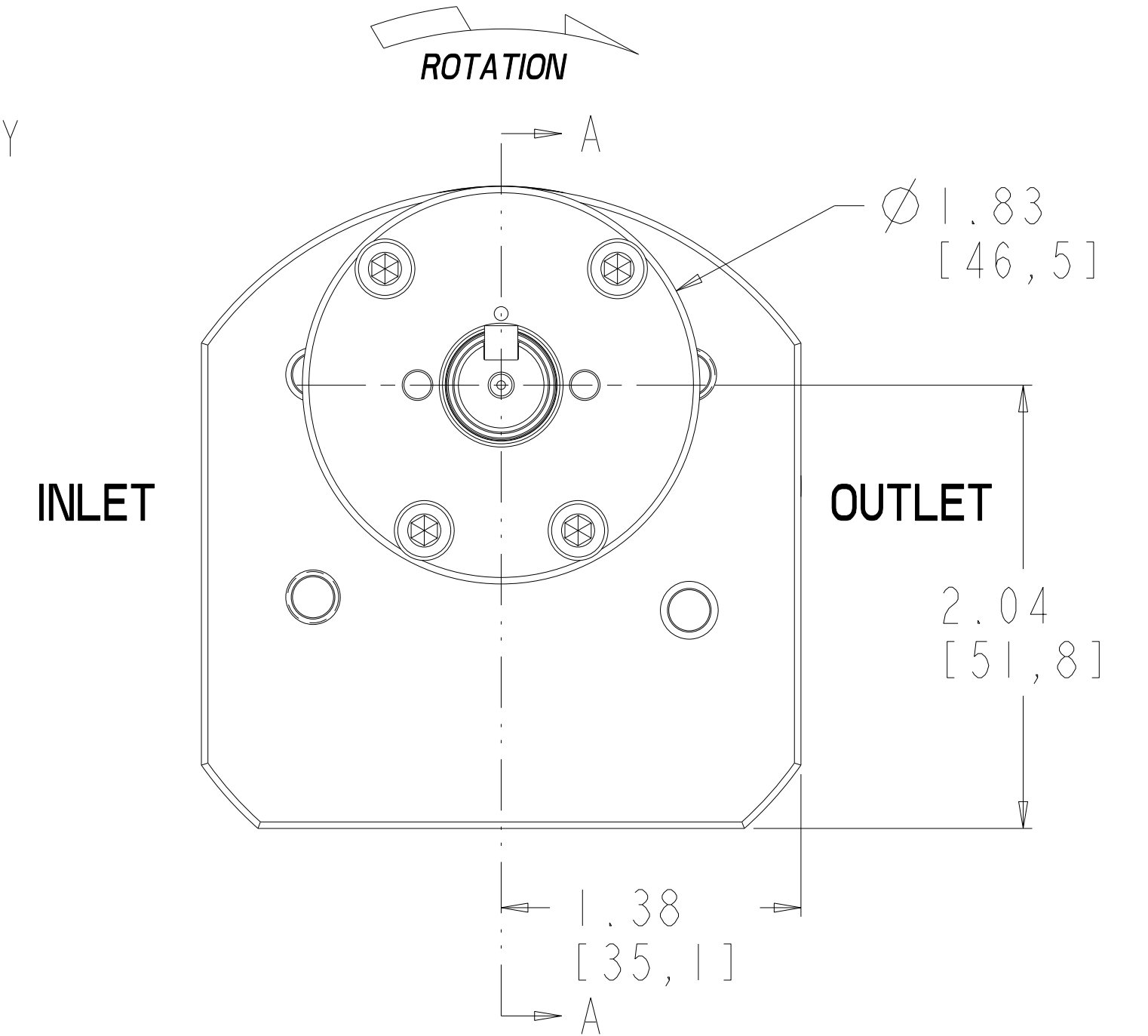
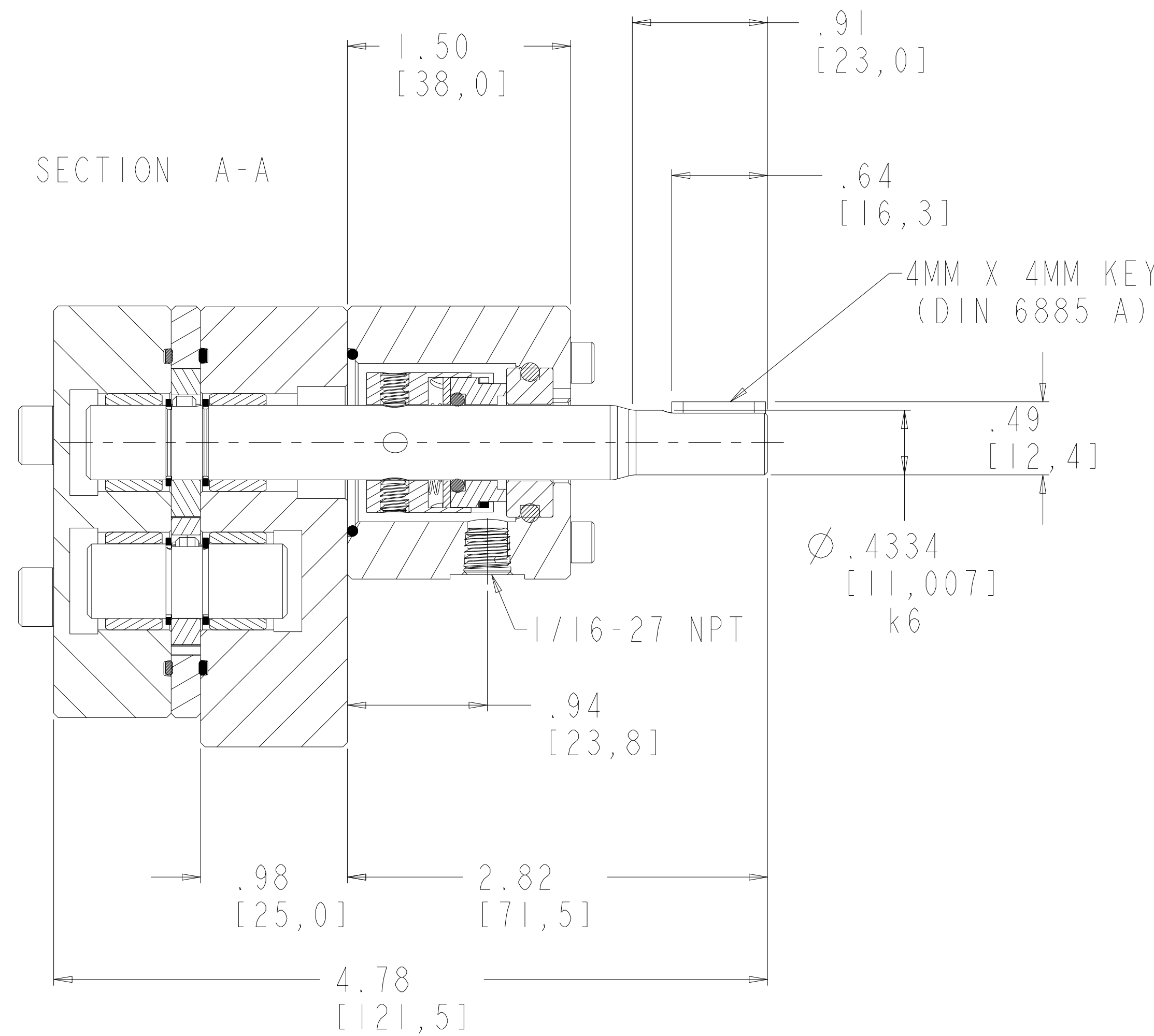
**M4 BOLTS LUBRICATED = 20 lb.-in. (2.3N-m)**

**M10 BOLTS (MOUNTING) LUBRICATED = 335 lb.-in. (37.8 N-m)**

REVISIONS			
LTR	DESCRIPTION	DATE	ECN NO.
I	PLUG WAS 18-73000-0007-1	07/24/07	127-2007



SECTION A-A

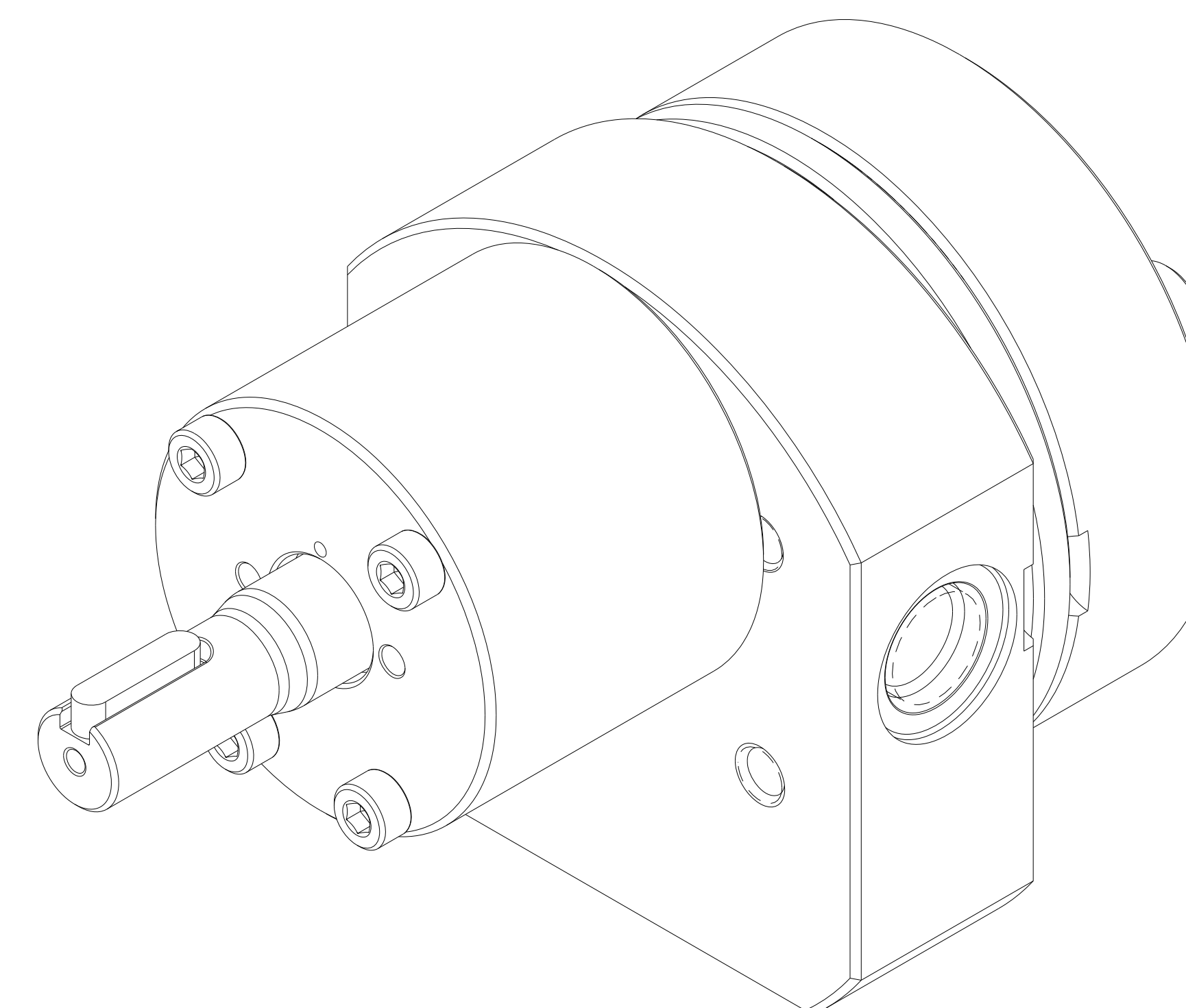


INTERPRET PER ASME-Y14.5M 1994

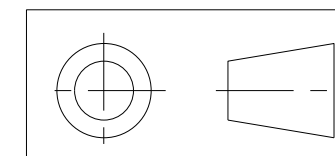
<p>THIS DOCUMENT CONTAINS INFORMATION THAT IS CONFIDENTIAL AND PROPRIETARY TO ZENITH PUMPS, COLFAX CORPORATION "COLFAX". THIS DOCUMENT IS FURNISHED ON THE UNDERSTANDING THAT THE DOCUMENT AND THE INFORMATION IT CONTAINS WILL NOT BE COPIED OR DISCLOSED TO OTHERS OR USED FOR ANY PURPOSE OTHER THAN CONDUCTING BUSINESS WITH COLFAX, AND WILL BE RETURNED AND ALL FURTHER USE DISCONTINUED UPON REQUEST BY COLFAX.</p>	<p>UNLESS OTHERWISE SPECIFIED DIMENSIONS ARE IN INCH TOLERANCES</p> <p>.XX ± 0.01 .XXX ± 0.005 ANG ± 0.5</p>	DRAWN LG	1.25.99	<p><b>ZENITH PUMPS</b> 5910 ELWIN BUCHANAN DRIVE SANFORD, NC 27330</p>	
		CHECKED			
<p>MATERIAL</p> <p>SEE BILL OF MATERIAL SHEET 2</p>		PART WEIGHT =	LBS	<p>C-9000 TYPE PUMP 0.6 CC/REV RANDOM 900</p>	
		SURFACE AREA =	IN <sup>2</sup>		
		MODEL NUMBER =	119000069000	SCALE 3:2	<p>DRAWING NUMBER</p> <p>11-90000-6900-0</p>
		DRAWING =	119000069000	SHEET 1 OF 3	
PRO/ENGINEER DRAWING	SIZE D				


ITEM No.	PART NUMBER	PART NAME	MATERIAL	QTY
	119000069000	C-9000 TYPE PUMP		1
5	152020701142	GEAR, DRIVING	ZP2724	2
16	181831800122	RING - RETAINING	PH 15-7 MO	4
2	157956800512	SHAFT, DRIVE	ZP2724	1
3	156925100394	PLATE, GEAR	316SS PER MT306	1
7	146915100112	ASSEMBLY, REAR PLATE		1
20	156915100274	PLATE, REAR	ZP1222	1
23	150453100031	BEARING, SLEEVE	ZP1186	2
34	187650402101	O-RING	PTFE ENCAPSULATED	2
8	146945200112	ASSEMBLY, FRONT PLATE		1
21	156945200294	PLATE, FRONT	ZP1222	1
24	150453100031	BEARING, SLEEVE	ZP1186	2
10	151609100291	DOWEL, HOLLOW	AISI 17-4PH	2
4	155600205751	KEY, ROUND	AISI 316SS	2
11	155402000293	HOUSING, SEAL	316SS PER MAT 306	1
33	187650402091	O-RING	PTFE ENCAPSULATED	1
19	189340610452	SHCS M6X1 X 45MM 316 SS		4
17	185600800061	KEY, SQUARE W/RND ENDS	STEEL 50-1K	1
18	189340410452	SHCS M4X0.7 X 45 MM 316 SS		4
13	187900300531	TYPE 8-IT MECHANICAL SEAL	X VITON O-RING	1
35	187300000161	PLUG, DRYSEAL TYPE	316 S.S.	1
9	150115600322	ARBOR	ZP2724	1
30	150013100642	SEAL ASSEMBLY TOOL	ACETAL COPOLYMER	1

REVISIONS			
LTR	DESCRIPTION	DATE	ECN NO.
1	PLUG WAS 18-73000-0007-1	07/24/07	127-2007

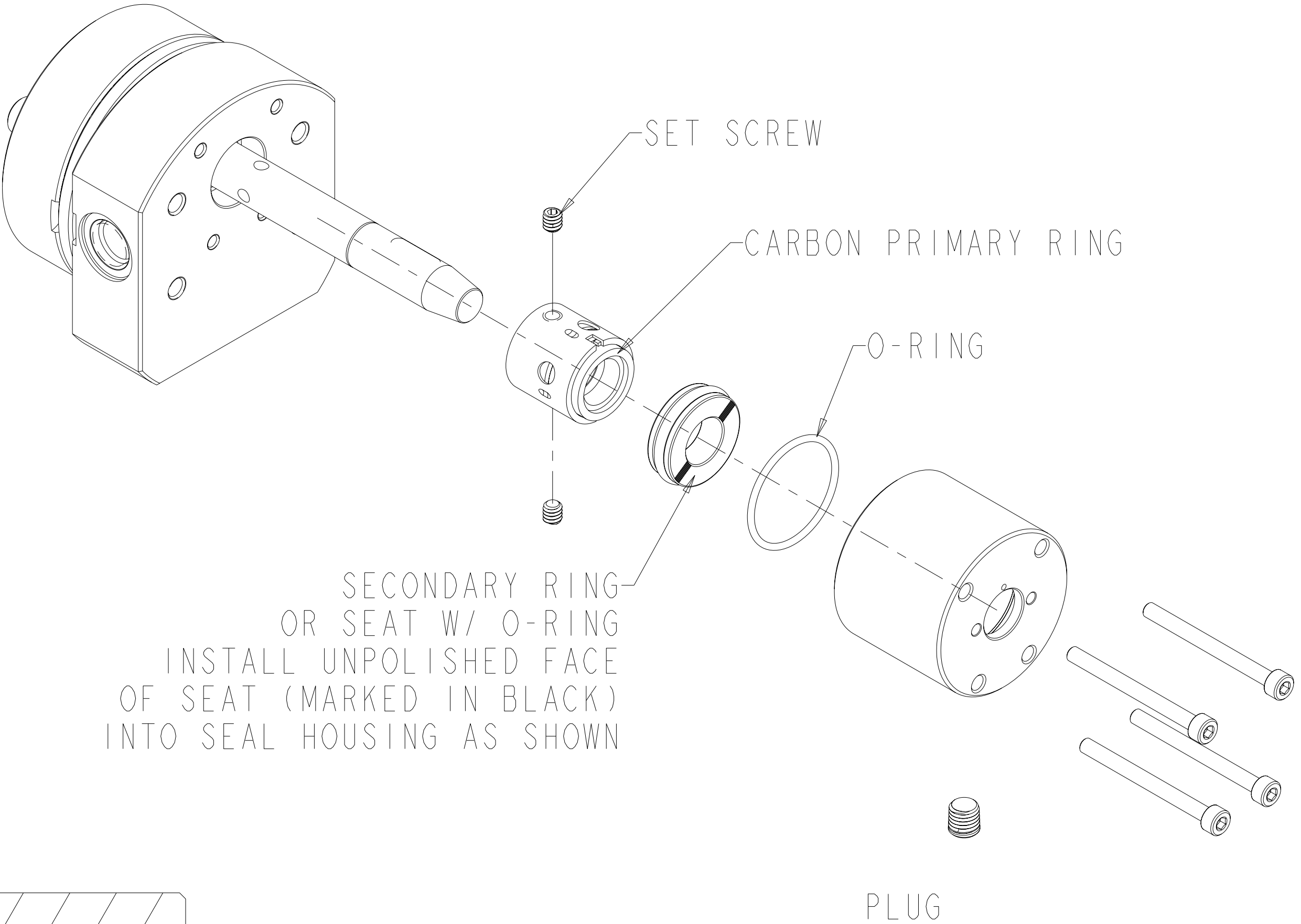


INTERPRET PER ASME-Y14.5M 1994



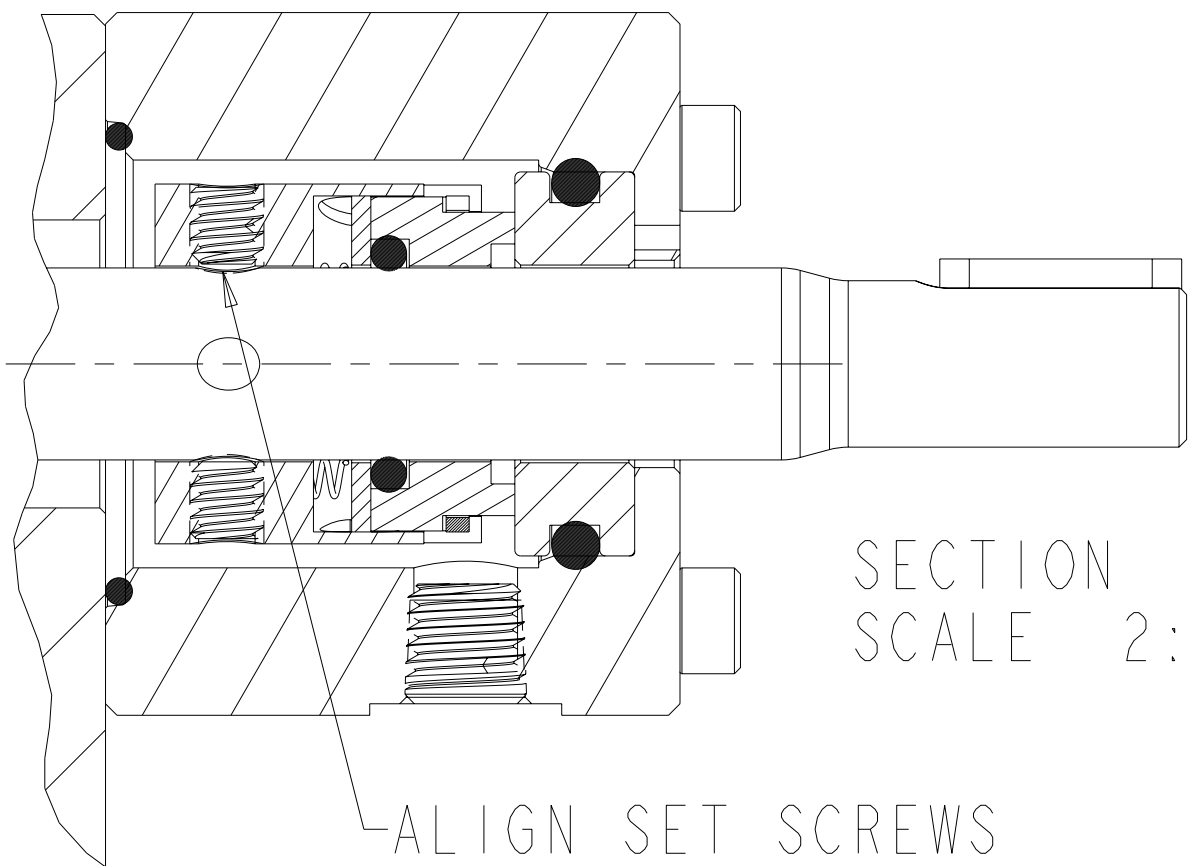
<small>THIS DOCUMENT CONTAINS INFORMATION THAT IS CONFIDENTIAL AND PROPRIETARY TO ZENITH PUMPS, COLFAX CORPORATION "COLFAX". THIS DOCUMENT IS FURNISHED ON THE UNDERSTANDING THAT THE DOCUMENT AND THE INFORMATION IT CONTAINS WILL NOT BE COPIED OR DISCLOSED TO OTHERS OR USED FOR ANY PURPOSE OTHER THAN CONDUCTING BUSINESS WITH COLFAX, AND WILL BE RETURNED AND ALL FURTHER USE DISCONTINUED UPON REQUEST BY COLFAX.</small>	<small>UNLESS OTHERWISE SPECIFIED DIMENSIONS ARE IN INCH TOLERANCES</small> .XX ± 0.01 .XXX ± 0.005 ANG ± 0.5	DRAWN LG	1.25.99	 <b>ZENITH PUMPS</b> 5910 ELWIN BUCHANAN DRIVE SANFORD, NC 27330
		CHECKED		
MATERIAL SEE BILL OF MATERIAL SHEET 2		MODEL NUMBER = 119000069000 DRAWING = 119000069000	C-9000 TYPE PUMP 0.6 CC/REV RANDOM 900	DRAWING NUMBER 11-90000-6900-0
		PRO/ENGINEER DRAWING	SIZE D	

REVISIONS			
LTR	DESCRIPTION	DATE	ECN NO.
1	PLUG WAS 18-73000-0007-1	07/24/07	127-2007



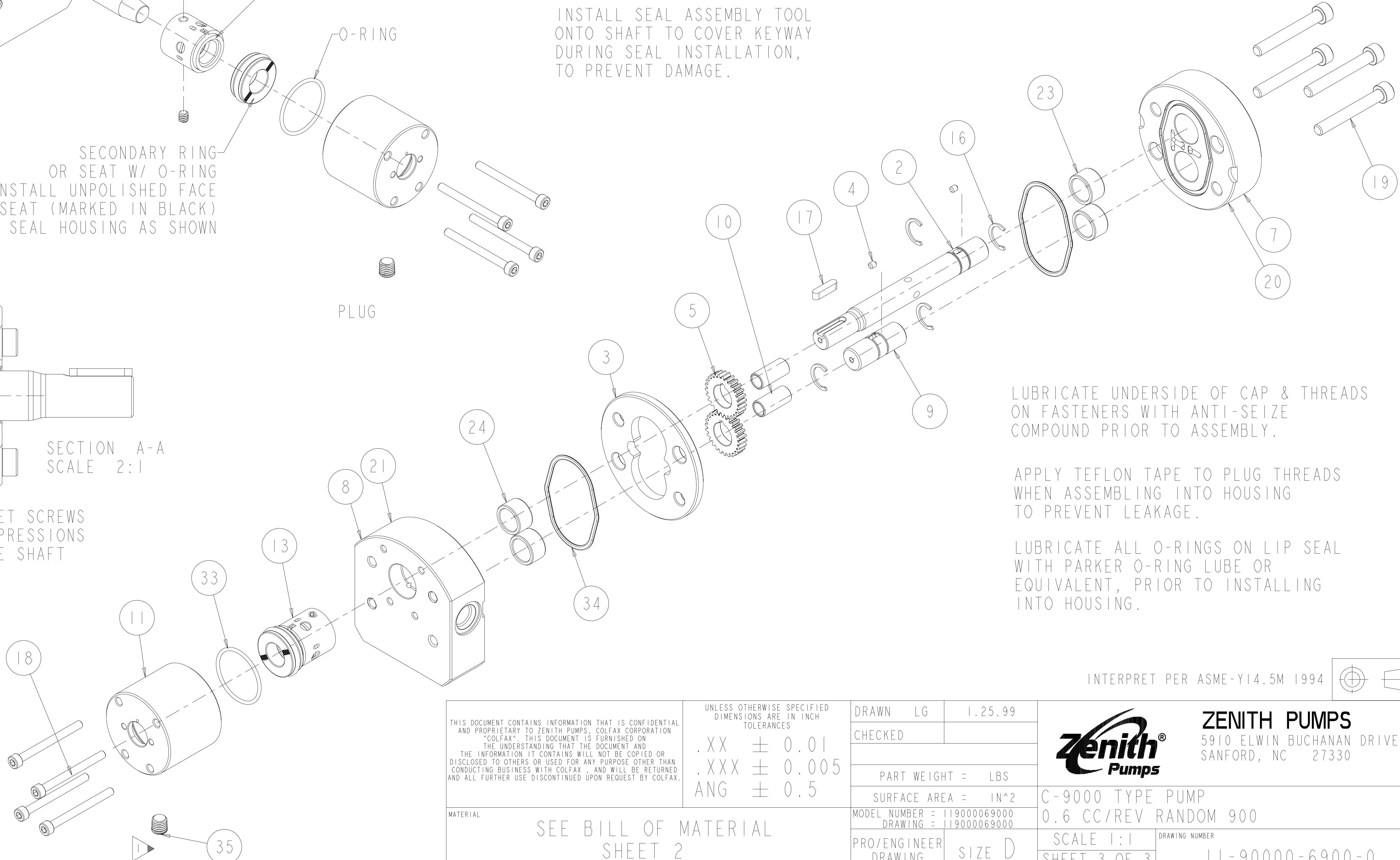
SECONDARY RING  
OR SEAT W/ O-RING  
INSTALL UNPOLISHED FACE  
OF SEAT (MARKED IN BLACK)  
INTO SEAL HOUSING AS SHOWN

INSTALL SEAL ASSEMBLY TOOL  
ONTO SHAFT TO COVER KEYWAY  
DURING SEAL INSTALLATION,  
TO PREVENT DAMAGE.



SECTION A-A  
SCALE 2:1

ALIGN SET SCREWS  
WITH DEPRESSIONS  
IN DRIVE SHAFT

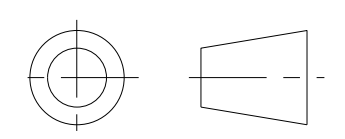


LUBRICATE UNDERSIDE OF CAP & THREADS  
ON FASTENERS WITH ANTI-SEIZE  
COMPOUND PRIOR TO ASSEMBLY.

APPLY TEFLON TAPE TO PLUG THREADS  
WHEN ASSEMBLING INTO HOUSING  
TO PREVENT LEAKAGE.

LUBRICATE ALL O-RINGS ON LIP SEAL  
WITH PARKER O-RING LUBE OR  
EQUIVALENT, PRIOR TO INSTALLING  
INTO HOUSING.

INTERPRET PER ASME-Y14.5M 1994

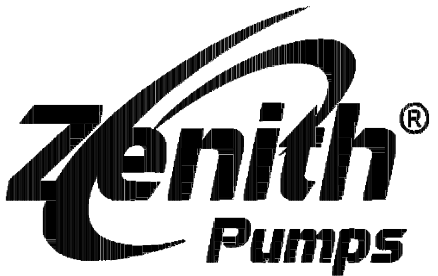


THIS DOCUMENT CONTAINS INFORMATION THAT IS CONFIDENTIAL AND PROPRIETARY TO ZENITH PUMPS, COLFAX CORPORATION "COLFAX". THIS DOCUMENT IS FURNISHED ON THE UNDERSTANDING THAT THE DOCUMENT AND THE INFORMATION IT CONTAINS WILL NOT BE COPIED OR DISCLOSED TO OTHERS OR USED FOR ANY PURPOSE OTHER THAN CONDUCTING BUSINESS WITH COLFAX, AND WILL BE RETURNED AND ALL FURTHER USE DISCONTINUED UPON REQUEST BY COLFAX.

UNLESS OTHERWISE SPECIFIED  
DIMENSIONS ARE IN INCH  
TOLERANCES  
.XX ± 0.01  
.XXX ± 0.005  
ANG ± 0.5

MATERIAL  
SEE BILL OF MATERIAL  
SHEET 2

DRAWN	LG	1.25.99
CHECKED		
PART WEIGHT = LBS		
SURFACE AREA = IN <sup>2</sup>		
PRO/ENGINEER	SIZE D	
DRAWING		



**ZENITH PUMPS**  
5910 ELWIN BUCHANAN DRIVE  
SANFORD, NC 27330

C-9000 TYPE PUMP 0.6 CC/REV RANDOM 900	
SCALE 1:1	DRAWING NUMBER
SHEET 3 OF 3	11-90000-6900-0

MODEL NUMBER = 119000069000  
DRAWING = 119000069000