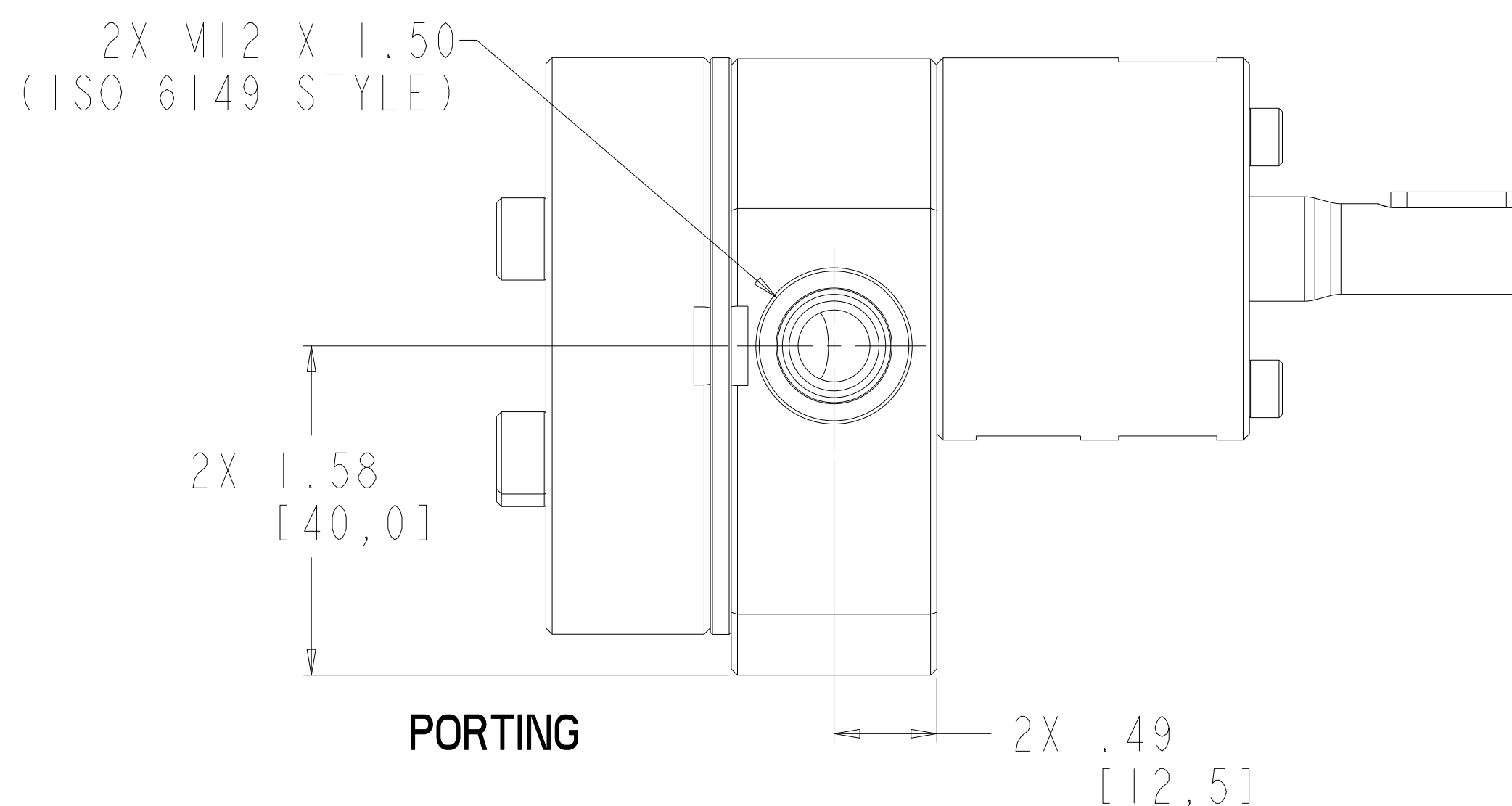
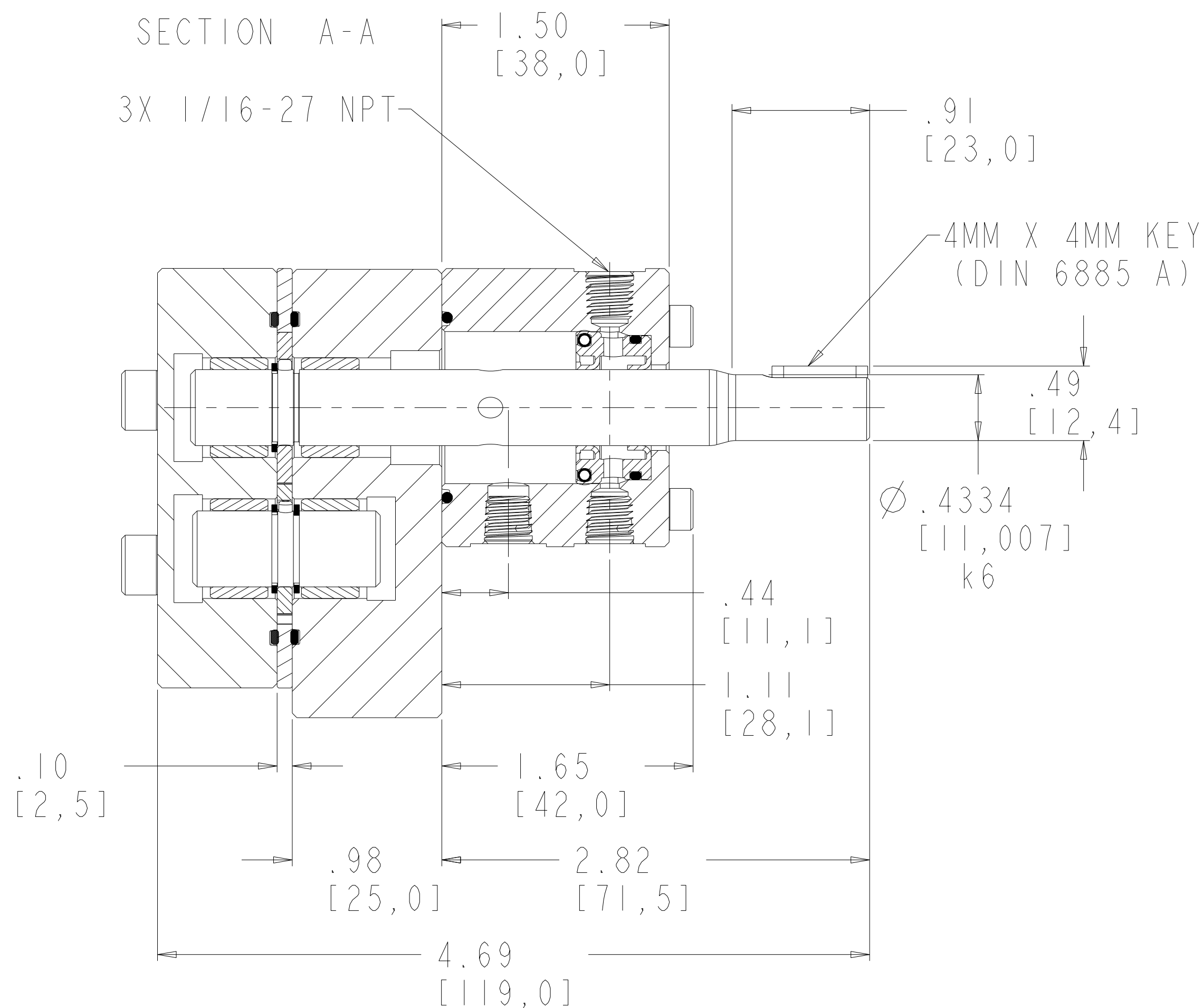
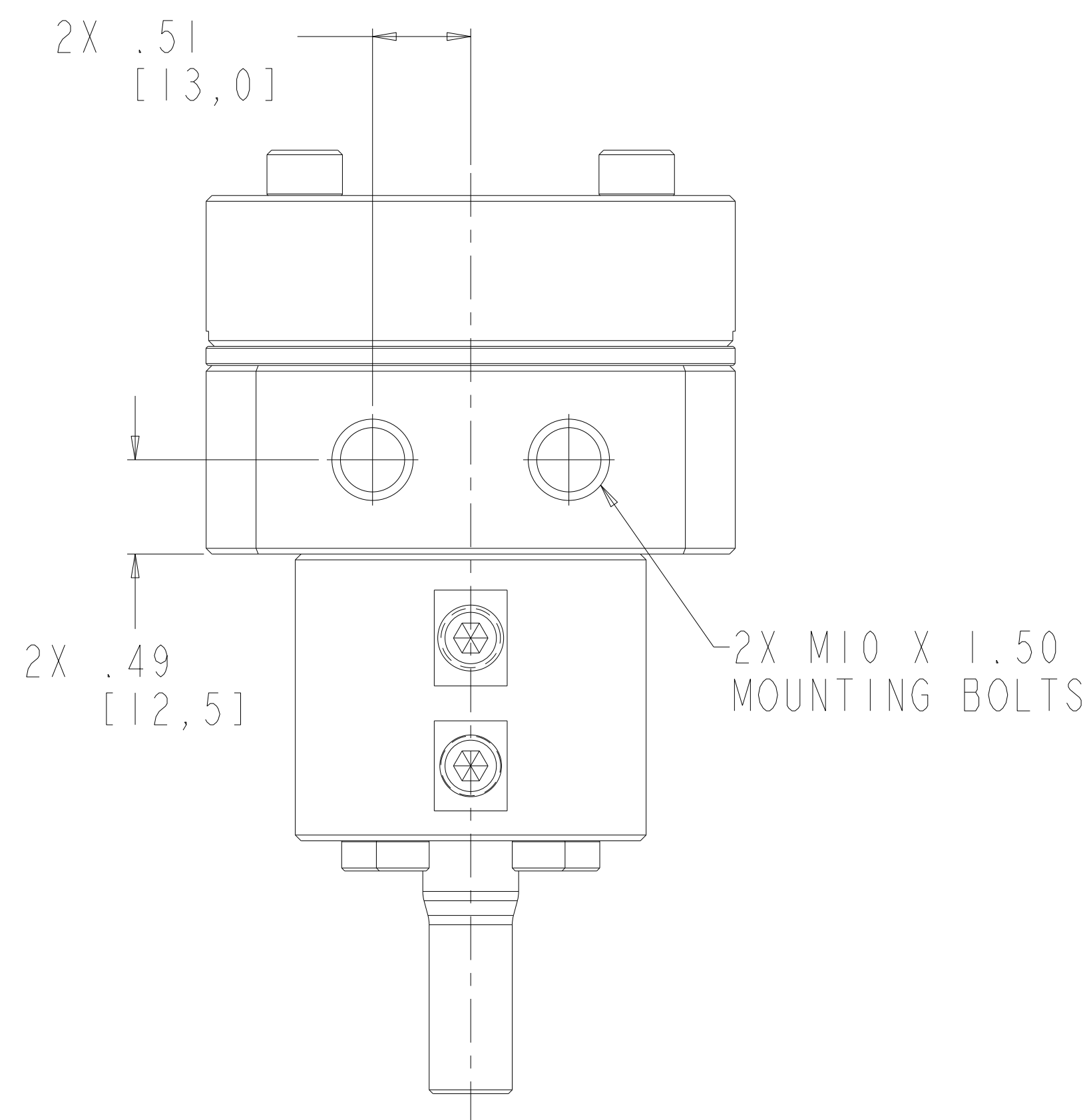
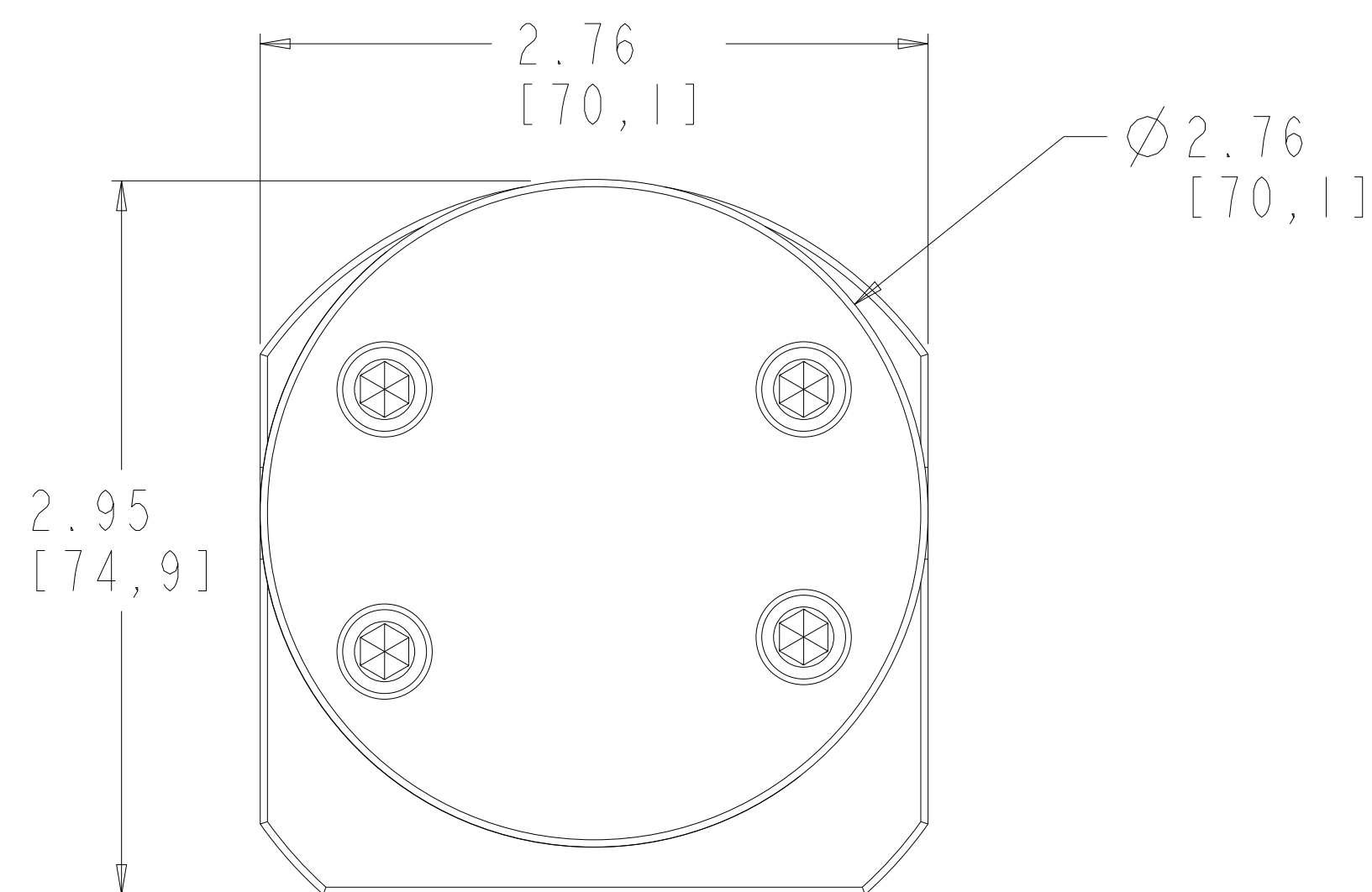


TORQUE CHART

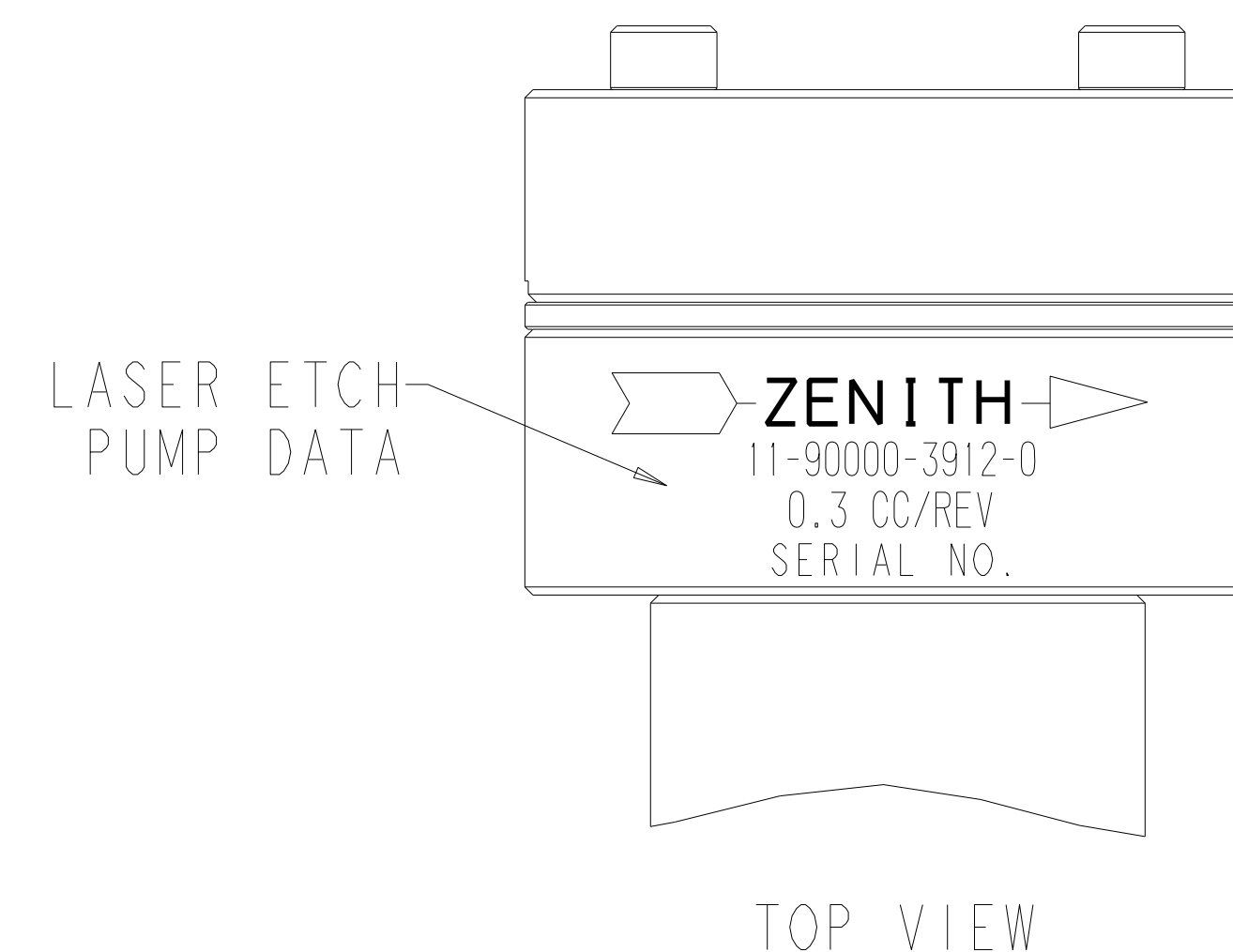
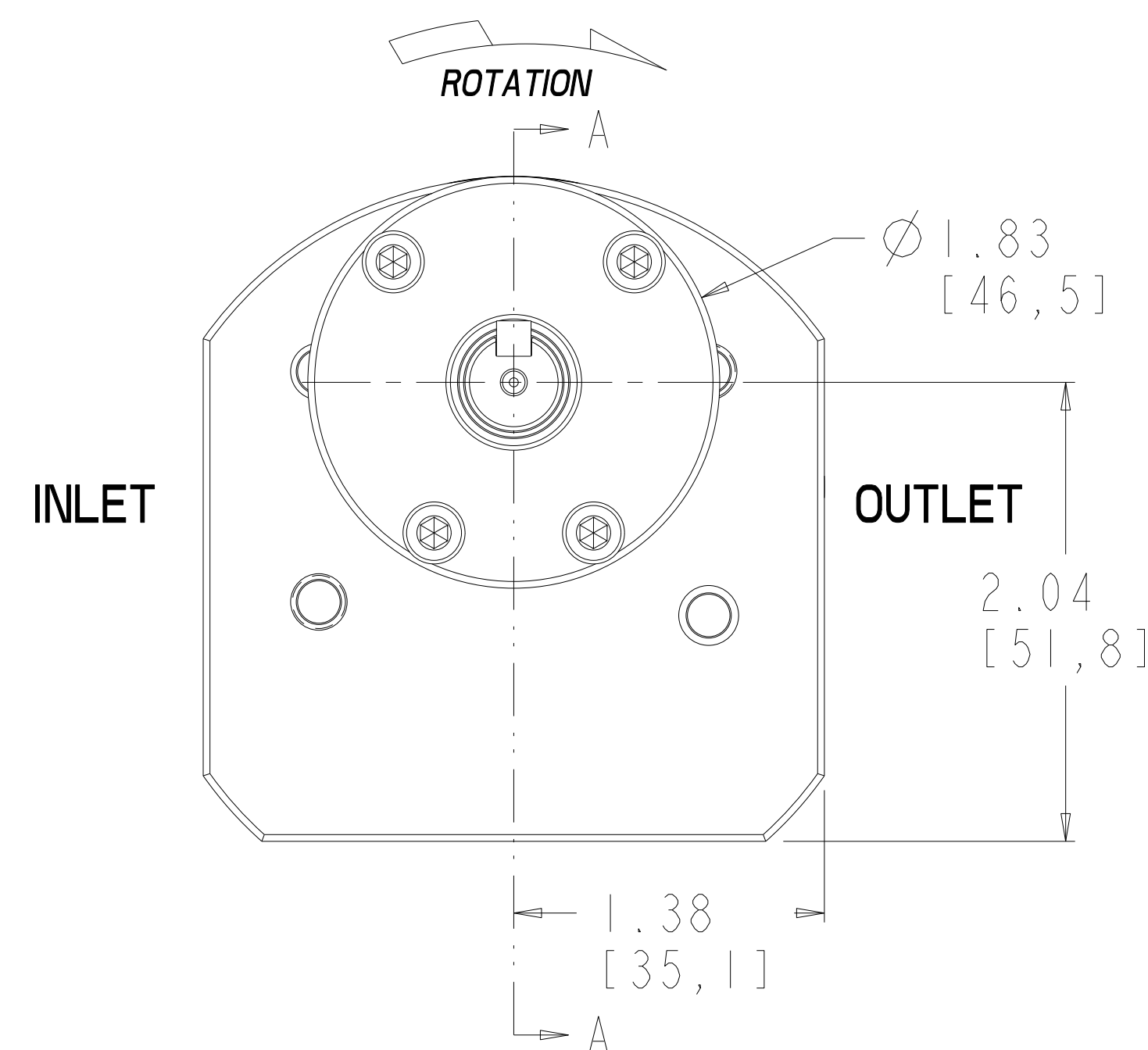
M6 BOLTS LUBRICATED = 70 lb.-in. (7.9 N-m)

M4 BOLTS LUBRICATED = 20 lb.-in. (2.3N-m)

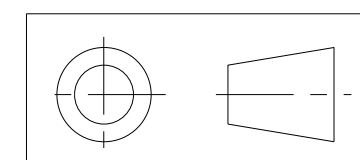
M10 BOLTS (MOUNTING) LUBRICATED = 335 lb.-in. (37.8 N-m)



| REVISIONS | | | |
|-----------|--------------------------|----------|----------|
| LTR | DESCRIPTION | DATE | ECN NO. |
| D | PLUG WAS 18-73000-0007-1 | 07/24/07 | 127-2007 |



INTERPRET PER ASME-Y14.5M 1994



THIS DOCUMENT CONTAINS INFORMATION THAT IS CONFIDENTIAL AND PROPRIETARY TO ZENITH PUMPS, COLFAX CORPORATION "COLFAX". THIS DOCUMENT IS FURNISHED ON THE UNDERSTANDING THAT THE DOCUMENT AND THE INFORMATION IT CONTAINS WILL NOT BE COPIED OR DISCLOSED TO OTHERS OR USED FOR ANY PURPOSE OTHER THAN CONDUCTING BUSINESS WITH COLFAX, AND WILL BE RETURNED AND ALL FURTHER USE DISCONTINUED UPON REQUEST BY COLFAX.

UNLESS OTHERWISE SPECIFIED DIMENSIONS ARE IN INCH TOLERANCES
 .XX ± 0.01
 .XXX ± 0.005
 ANG ± 0.5

MATERIAL SEE BILL OF MATERIAL ON SHEET 2 OF 3

DRAWN PLC 11/30/01
 CHECKED
 PART WEIGHT = LBS
 SURFACE AREA = IN^2
 MODEL NUMBER = 119000039120
 DRAWING = 119000039120
 PRO/ENGINEER DRAWING SIZE D

zenith® Pumps
 ZENITH PUMPS
 5910 ELWIN BUCHANAN DRIVE
 SANFORD, NC 27330

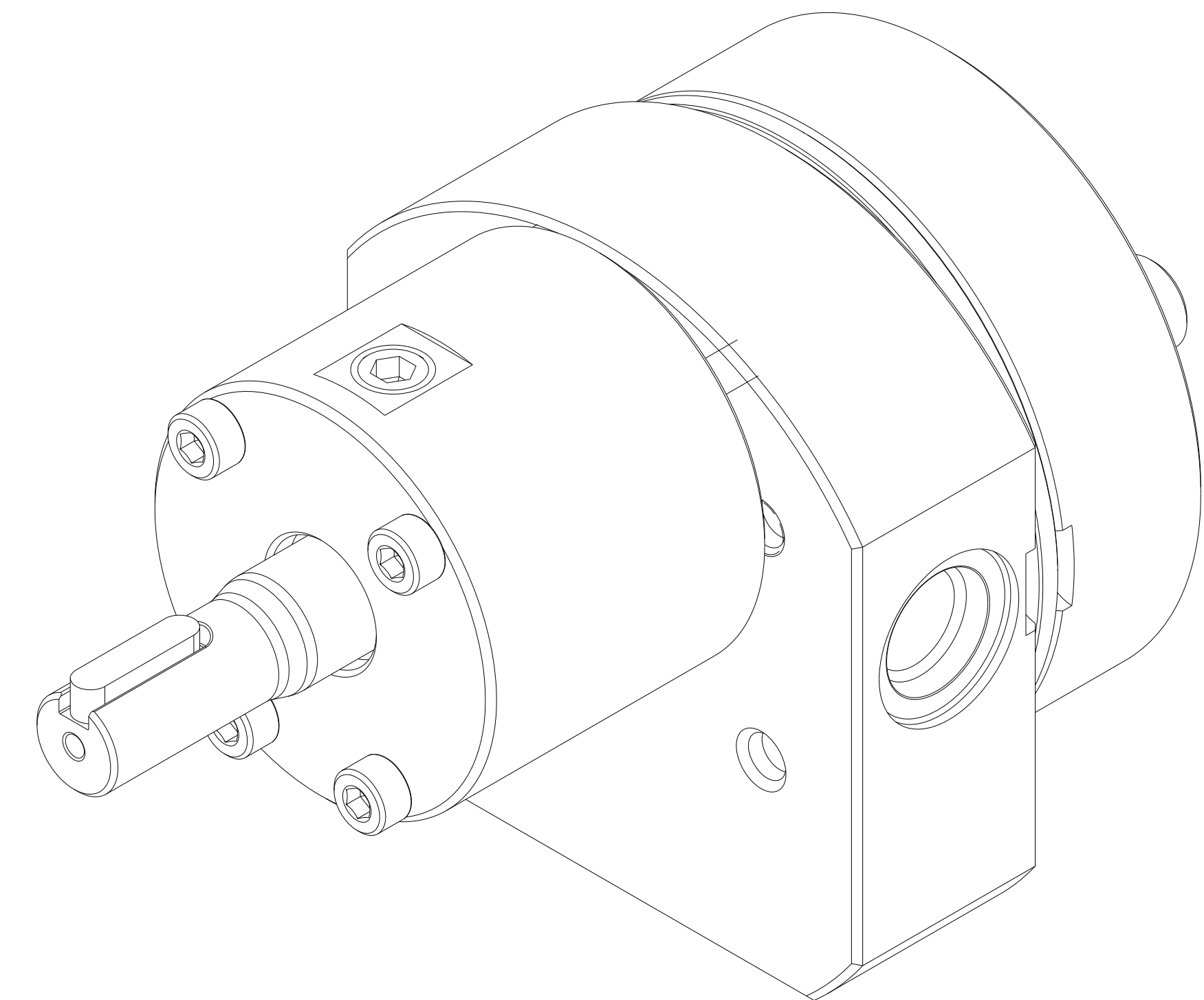
C-9000 TYPE PUMP
 0.3 CC/REV RANDOM 912

SCALE 3:2
 SHEET 1 OF 3

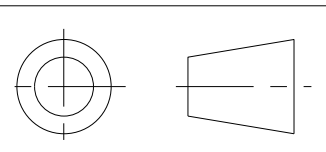
DRAWING NUMBER
 11-90000-3912-0


| ITEM No. | PART NUMBER | PART NAME | MATERIAL | QTY |
|----------|--------------|--------------------------------|-------------------------|-----|
| | 119000039120 | C-9000 TYPE PUMP | | 1 |
| 5 | 152160501322 | GEAR, DRIVING | ZP2724 | 2 |
| 16 | 181831800122 | RING - RETAINING | PH 15-7 MO | 3 |
| 2 | 157956800522 | SHAFT, DRIVE | ZP2724 | 1 |
| 4 | 155600205761 | KEY, ROUND | AISI 316SS | 2 |
| 3 | 156925100404 | PLATE, GEAR | 316SS PER MAT306 | 1 |
| 7 | 146915100112 | ASSEMBLY, REAR PLATE | | 1 |
| 20 | 156915100274 | PLATE, REAR | ZPI222 | 1 |
| 23 | 150453100031 | BEARING, SLEEVE | ZPI186 | 2 |
| 34 | 187650402101 | O-RING | PTFE ENCAPSULATED | 2 |
| 8 | 146945200112 | ASSEMBLY, FRONT PLATE | | 1 |
| 21 | 156945200294 | PLATE, FRONT | ZPI222 | 1 |
| 24 | 150453100031 | BEARING, SLEEVE | ZPI186 | 2 |
| 10 | 151609100631 | DOWEL, HOLLOW | 17-4PH | 2 |
| 11 | 155401900493 | HOUSING, SEAL | ZPI222 | 1 |
| 33 | 187650402091 | O-RING | PTFE ENCAPSULATED | 1 |
| 19 | 189340610452 | SHCS M6X1 X 45MM 316 SS | | 4 |
| 17 | 185600800061 | KEY, SQUARE W/RND ENDS | STEEL 50-1K | 1 |
| 18 | 189340410452 | SHCS M4X0.7 X 45 MM 316 SS | | 4 |
| 50 | 147900400052 | SUB-ASSEMBLY, ASSY INSTRUCTION | | 1 |
| 52 | 150013100642 | SEAL ASSEMBLY TOOL | ACETAL COPOLYMER | 1 |
| 51 | 187900401371 | TANDEM LIP SEAL | CARB. FIBER FILLED PTFE | 1 |
| 35 | 187300000161 | PLUG, DRYSEAL TYPE | 316 S.S. | 3 |
| 9 | 150115600332 | ARBOR | ZP2724 | 1 |

| REVISIONS | | | |
|-----------|--------------------------|----------|----------|
| LTR | DESCRIPTION | DATE | ECN NO. |
| D | PLUG WAS 18-73000-0007-1 | 07/24/07 | 127-2007 |



INTERPRET PER ASME-Y14.5M 1994



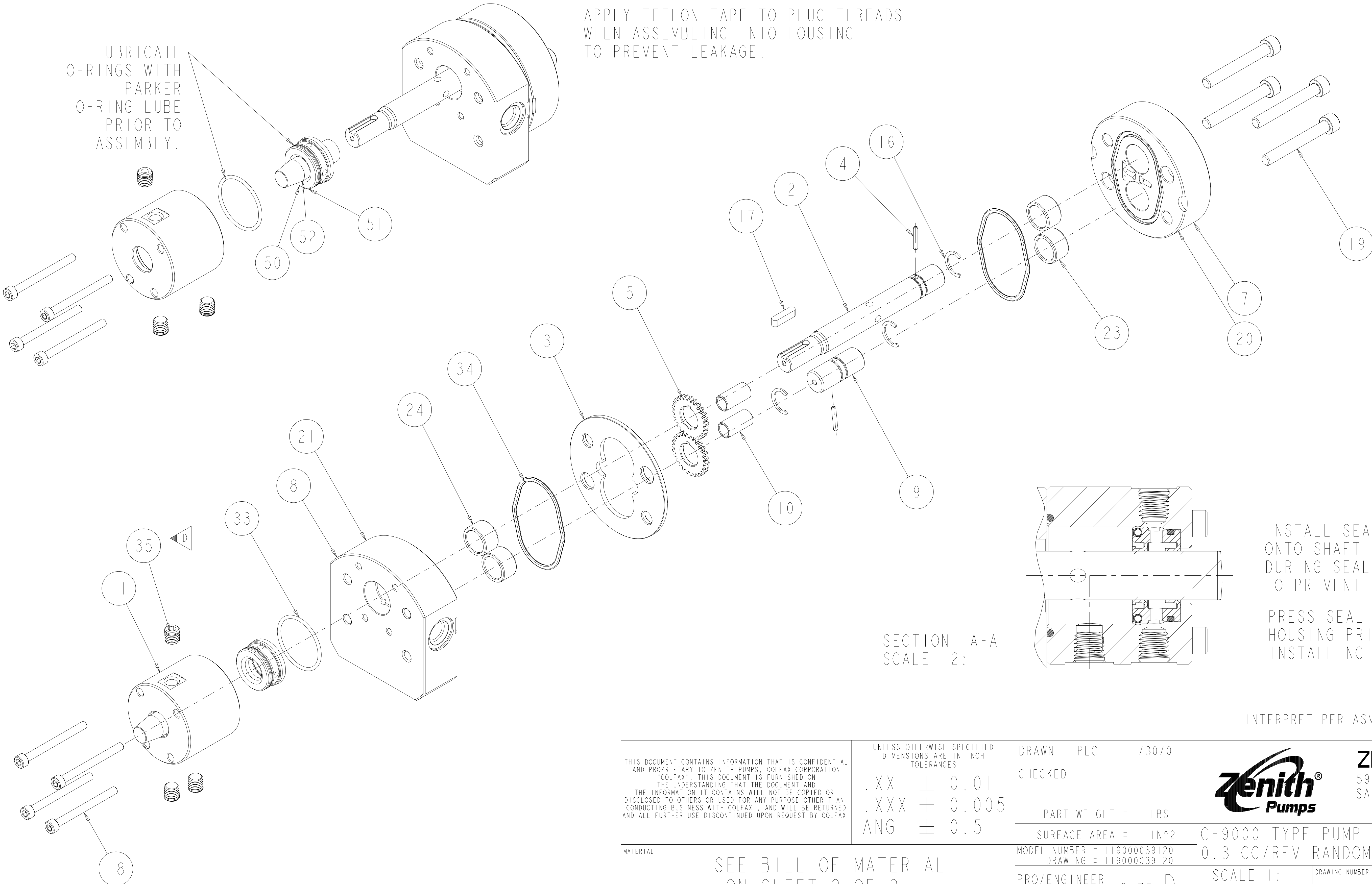
| | | | | | |
|--|--|----------------|--------------|--------------|---|
| <small>THIS DOCUMENT CONTAINS INFORMATION THAT IS CONFIDENTIAL AND PROPRIETARY TO ZENITH PUMPS, COLFAX CORPORATION "COLFAX". THIS DOCUMENT IS FURNISHED ON THE UNDERSTANDING THAT THE DOCUMENT AND THE INFORMATION IT CONTAINS WILL NOT BE COPIED OR DISCLOSED TO OTHERS OR USED FOR ANY PURPOSE OTHER THAN CONDUCTING BUSINESS WITH COLFAX, AND WILL BE RETURNED AND ALL FURTHER USE DISCONTINUED UPON REQUEST BY COLFAX.</small> | <small>UNLESS OTHERWISE SPECIFIED DIMENSIONS ARE IN INCH TOLERANCES</small> .XX ± 0.01 .XXX ± 0.005 ANG ± 0.5 | DRAWN | PLC | 11/30/01 |  ZENITH PUMPS 5910 ELWIN BUCHANAN DRIVE SANFORD, NC 27330 |
| | | CHECKED | | | |
| MATERIAL SEE BILL OF MATERIAL ON SHEET 2 OF 3 | | MODEL NUMBER = | 119000039120 | | C-9000 TYPE PUMP 0.3 CC/REV RANDOM 912 |
| | | DRAWING = | 119000039120 | | |
| | | PRO/ENGINEER | SIZE D | SCALE 2:1 | DRAWING NUMBER 11-90000-3912-0 |
| | | DRAWING | | SHEET 2 OF 3 | |

| REVISIONS | | | |
|-----------|--------------------------|----------|----------|
| LTR | DESCRIPTION | DATE | ECN NO. |
| D | PLUG WAS 18-73000-0007-1 | 07/24/07 | 127-2007 |

LUBRICATE UNDERSIDE OF CAP & THREADS ON FASTENERS WITH ANTI-SEIZE COMPOUND PRIOR TO ASSEMBLY.

APPLY TEFLON TAPE TO PLUG THREADS WHEN ASSEMBLING INTO HOUSING TO PREVENT LEAKAGE.

LUBRICATE O-RINGS WITH PARKER O-RING LUBE PRIOR TO ASSEMBLY.

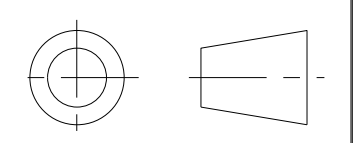


SECTION A-A
SCALE 2:1

INSTALL SEAL ASSEMBLY TOOL ONTO SHAFT TO COVER KEYWAY DURING SEAL INSTALLATION, TO PREVENT DAMAGE.

PRESS SEAL FIRMLY INTO HOUSING PRIOR TO INSTALLING ONTO PUMP.

INTERPRET PER ASME-Y14.5M 1994



| | | | | |
|--|--|--|--|---|
| <small>THIS DOCUMENT CONTAINS INFORMATION THAT IS CONFIDENTIAL AND PROPRIETARY TO ZENITH PUMPS, COLFAX CORPORATION "COLFAX". THIS DOCUMENT IS FURNISHED ON THE UNDERSTANDING THAT THE DOCUMENT AND THE INFORMATION IT CONTAINS WILL NOT BE COPIED OR DISCLOSED TO OTHERS OR USED FOR ANY PURPOSE OTHER THAN CONDUCTING BUSINESS WITH COLFAX, AND WILL BE RETURNED AND ALL FURTHER USE DISCONTINUED UPON REQUEST BY COLFAX.</small> | <small>UNLESS OTHERWISE SPECIFIED DIMENSIONS ARE IN INCH TOLERANCES</small> .XX ± 0.01 .XXX ± 0.005 ANG ± 0.5 | | DRAWN PLC 11/30/01 CHECKED | ZENITH PUMPS 5910 ELWIN BUCHANAN DRIVE SANFORD, NC 27330 |
| | MATERIAL SEE BILL OF MATERIAL ON SHEET 2 OF 3 | | PART WEIGHT = LBS SURFACE AREA = IN ² MODEL NUMBER = 119000039120 DRAWING = 119000039120 | |
| | | | PRO/ENGINEER DRAWING SIZE D | SCALE 1:1 SHEET 3 OF 3 |
| | | | DRAWING NUMBER 11-90000-3912-0 | |